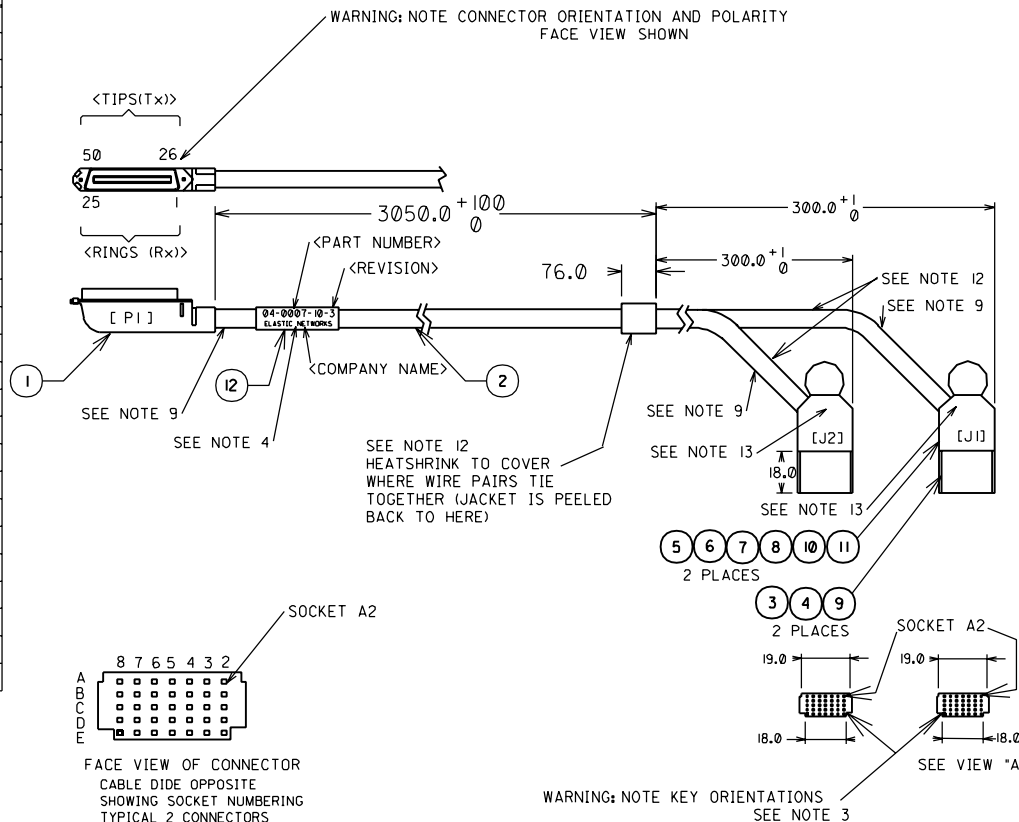
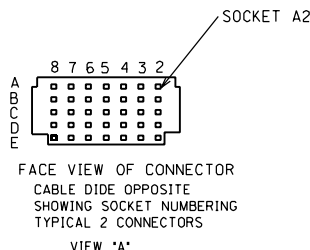


FROM CONN	FROM PIN NO.	WITH PAIR NO.	WITH WIRE COLOR	TO CONN	TO PIN NO.	FROM CONN	FROM PIN NO.	WITH PAIR NO.	WITH WIRE COLOR	TO CONN	TO PIN NO.
J1	B2	R1	BLU/WHT	P1	1	A2	T1	WHT/BLU	P1	26	
	E2	R2	ORN/WHT		2	D2	T2	WHT/ORG		27	
	B3	R3	GRN/WHT		3	A3	T3	WHT/GRN		28	
	E3	R4	BRN/WHT		4	D3	T4	WHT/BRN		29	
	B4	R5	SLT/WHT		5	A4	T5	WHT/SLT		30	
	E4	R6	BLU/WHT		6	D4	T6	RED/BLU		31	
	B6	R7	ORN/RED		7	A6	T7	RED/ORG		32	
	E6	R8	GRN/RED		8	D6	T8	RED/GRN		33	
	B7	R9	BRN/RED		9	A7	T9	RED/BRN		34	
	E7	R10	SLT/RED		10	D7	T10	RED/SLT		35	
	B8	R11	BLU/BLK		11	A8	T11	BLK/BLU		36	
	E8	R12	ORG/BLK		12	D8	T12	BLK/ORG		37	
J2	B2	R13	GRN/BLK	P1	13	A2	T13	BLK/GRN	P1	38	
	E2	R14	BRN/BLK		14	D2	T14	BLK/BRN		39	
	B3	R15	SLT/BLK		15	A3	T15	BLK/SLT		40	
	E3	R16	BLU/YEL		16	D3	T16	YEL/BLU		41	
	B4	R17	ORG/YEL		17	A4	T17	YEL/ORG		42	
	E4	R18	GRN/YEL		18	D4	T18	YEL/GRN		43	
	B6	R19	BRN/YEL		19	A6	T19	YEL/BRN		44	
	E6	R20	SLU/YEL		20	D6	T20	YEL/SLT		45	
	B7	R21	BLU/VIO		21	A7	T21	VIO/BLU		46	
	E7	R22	ORG/VIO		22	D7	T22	VIO/ORG		47	
	B8	R23	GRN/VIO		23	A8	T23	VIO/GRN		48	
	E8	R24	BRN/VIO		24	D8	T24	VIO/BRN		49	
NOT USED			SLT/VIO	25	NOT USED	T25	VIO/SLT	50			



NOTES:

- UNLESS OTHERWISE SPECIFIED ALL DIMENSIONS ARE IN MILLIMETERS; 2 DECIMAL PLACES +/- 0.254; ANGLES +/- 1°
- TO CONVERT INCHES TO MILLIMETERS USE 1 INCH= 25.40 MILLIMETERS.
- CONNECTOR FACE IS KEYED BY DIMENSIONS SHOWN.
- LOCATE PRODUCT ID LABEL APPROX. AS SHOWN. CABLE PART NUMER, REVISION AND COMPANY NAME SHALL BE PRINTED ON LABEL AS SHOWN.
- UNASSIGNED
- UNASSIGNED
- CABLE ASSEMBLY SHALL BE 100% TESTED FOR SHORTCUTS AND CONTINUITY.
- UNASSIGNED
- APPLY WRAP AROUND LABEL ITEM 12 IN LACATIONS SHOWN WITH CONNECTOR DESIGNATIONS STAMPED ON THE RESPECTIVE LABELS.
- USE HAND TOOL FOR AWG 22-26, MOLEX PART NUMBER 69008-1051 OR EQUIV
- SEE SEPERATE BILL OF MATERIAL E 85362-004
- APPLY HEATSHRINK ITEM 13 OVER EXPOSED TWISTED PAIR WIRING BETWEEN BREAK OUT POINT AND THE CONNECTOR BACKSHELL. ENDS OF HEATSHRINK SHALL BE ENCAPSULATED BY CONNECTOR BACKSHELL.
- APPLY LABEL ITEM 12 IN LOCATIONS SHOWN WITH THE FOLLOWING STAMPED ON LABEL: " RIGH SIDE "



EC NO. MC2000-0443 DRWN: DONDREJ 00/06/09 CHK: KN APPR: FB	QUALITY SYMBOLS MAJOR = CRITICAL = C =	GENERAL TOLERANCES: (UNLESS SPECIFIED)		SCALE :	DESIGN UNITS	THIRD ANGLE PROJECTION	DIMENSIONS:	SHT	REV
		mm	INCH	:	<input checked="" type="checkbox"/> mm <input type="checkbox"/> INCH	<input type="checkbox"/> mm <input type="checkbox"/> INCH	<input type="checkbox"/> mm ONLY	INCH	REVISION
4 PLACES ±0.     ±. 3 PLACES ±0.     ±. 2 PLACES ±0.     ±. 1 PLACE ±0.     ±.		ANGLUAR: ± 1/2°		DRAWN BY & DATE DONDREJ 00/06/09		TITLE: OMNIGRID-CHAMP CABLE ASSY. 50 way CABLE			
DRAFT WHERE APPLICABLE MUST REMAIN WITHIN DIMENSIONS		APPROVED BY & DATE KN / / FB / /		CAD FILENAME		MATERIAL NO. 85362-0002 DRAWING NO. SD-85362-002 SHEET NO. 1 OF 1			
THIS DRAWING CONTAINS INFORMATION THAT IS PROPRIETARY TO MOLEX INCORPORATED AND SHOULD NOT BE USED WITHOUT WRITTEN PERMISSION.									