

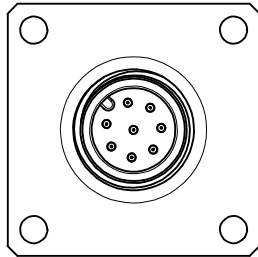
Engineering Number:
0912 083GM 04000

TECHNICAL DATA:
M12 8 pole flange solder Version with solderwings.
The bottom and the drills are equivalent to M23 flange housing.

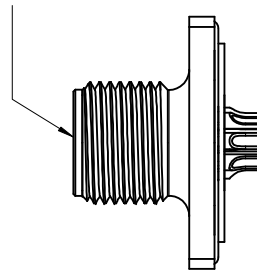
poles: 8
coding: type A
nominal voltage: 30VAC / 36VDC
max current: 3A
contact resistance: < 5m Ohms
test voltage: 0,8 KV / 60 sec.
insulation withstand: > 1 GOhm

IP Degree of protection: IP 67 in connection area
Temperature range: -40°C to 125°C

ENTER DESCRIPTION EC NO: WEU2010-0369 DRWINSTAUDIGEL 2010/02/17 CHYKD:FPACHER 2010/02/20 APPR:FPACHER 2010/02/24 REV	QUALITY SYMBOLS ▽=0 ◻=0	GENERAL TOLERANCES (UNLESS SPECIFIED)		DIMENSION STYLE MM ONLY	SCALE 2:1	DESIGN UNITS METRIC	THIRD ANGLE PROJECTION	
		4 PLACES ± --- ± --- 3 PLACES ± --- ± --- 2 PLACES ± 0.05 ± --- 1 PLACE ± 0.1 ± ---	mm INCH ± --- ± --- ± 0.05 ± --- ± 0.1 ± ---	DRAWN BY NSTAUDIGEL	DATE 2010/02/17	TITLE M12 FLANGE WITH M23 SQUARE SOLDER FLAG		
		ANGULAR ± ---°		CHECKED BY FPACHER	DATE 2010/02/19	MOLEX INCORPORATED		
		DRAFT WHERE APPLICABLE MUST REMAIN WITHIN DIMENSIONS		MATERIAL NO. 1200705138	DATE 2010/02/19	DOCUMENT NO. SD-120070-003	SHEET NO. 1 OF 2	

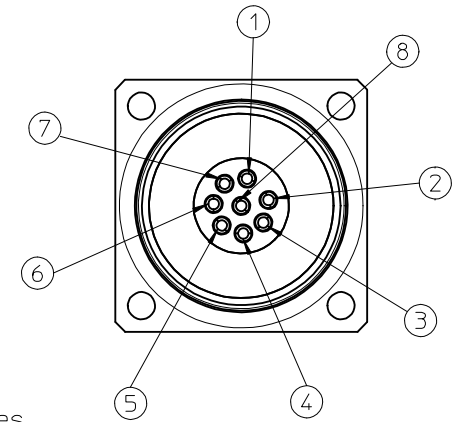


Frontend



Backend

Take care of the distances when soldering.



ELECTRICAL INTERCONNECTION DATA

For the electrical interconnection by single threads or wires the minimum air- and creeping distances **MUST NOT BE EXCEEDED**. These are the basement data according to IEC 60664.

GENERAL:

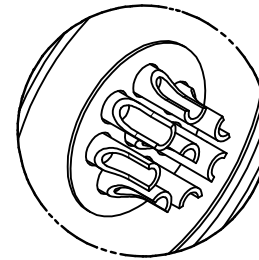
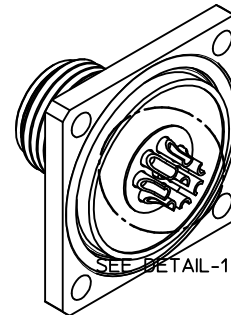
nominal voltage: 30VAC / 36VDC
 rated impulse voltage: 0,8 kV
 CTI value: >600

FRONTEND:

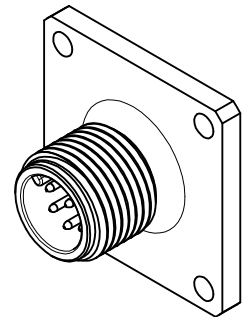
overvoltage category: III
 pollution degree: III
 minimum air distance: 0,8 mm
 minimum creeping dist.: 1,3 mm

BACKEND:

overvoltage category: III
 pollution degree: II
 minimum air distance: 0,2 mm
 minimum creeping dist.: 0,53 mm



DETAIL-1
SCALE 4:1



ENTER DESCRIPTION EC NO: WEU2010-0369 DRW:NSTAUDIGEL 2010/02/17 CHKD:FPACHER 2010/02/20 APPR:FPACHER 2010/02/24	REV DESCRIPTION	QUALITY SYMBOLS	GENERAL TOLERANCES (UNLESS SPECIFIED)		DIMENSION STYLE	SCALE	DESIGN UNITS	THIRD ANGLE PROJECTION			
		▼=0 ◻=0	mm	INCH	MM ONLY	2:1	METRIC				
			4 PLACES	± ---	± ---	DRAWN BY	DATE	TITLE			
			3 PLACES	± ---	± ---	NSTAUDIGEL	2010/02/17	M12 FLANGE WITH M23 SQUARE SOLDER FLAG			
	2 PLACES	± 0.05	± ---	CHECKED BY	DATE	MOLEX INCORPORATED					
	1 PLACE	± 0.1	± ---	APPROVED BY	DATE	SD-120070-003					
		ANGULAR ± ---°		FPACHER	2010/02/19	2 OF 2					
		DRAFT WHERE APPLICABLE MUST REMAIN WITHIN DIMENSIONS			MATERIAL NO.	DOCUMENT NO.	THIS DRAWING CONTAINS INFORMATION THAT IS PROPRIETARY TO MOLEX INCORPORATED AND SHOULD NOT BE USED WITHOUT WRITTEN PERMISSION				
					SIZE						
					A3						