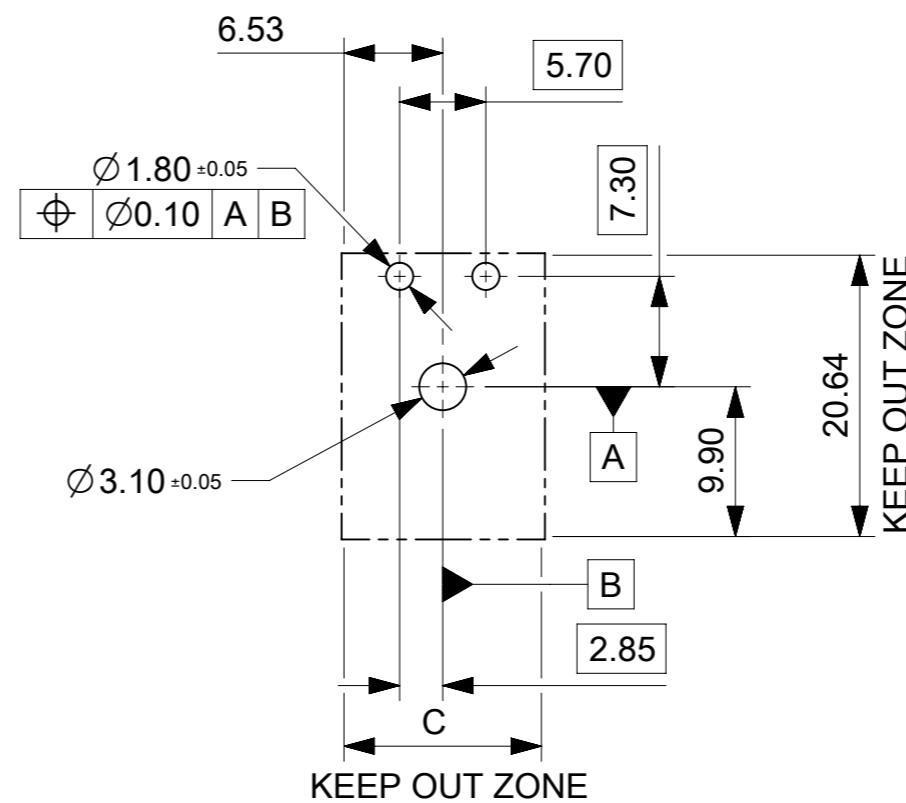
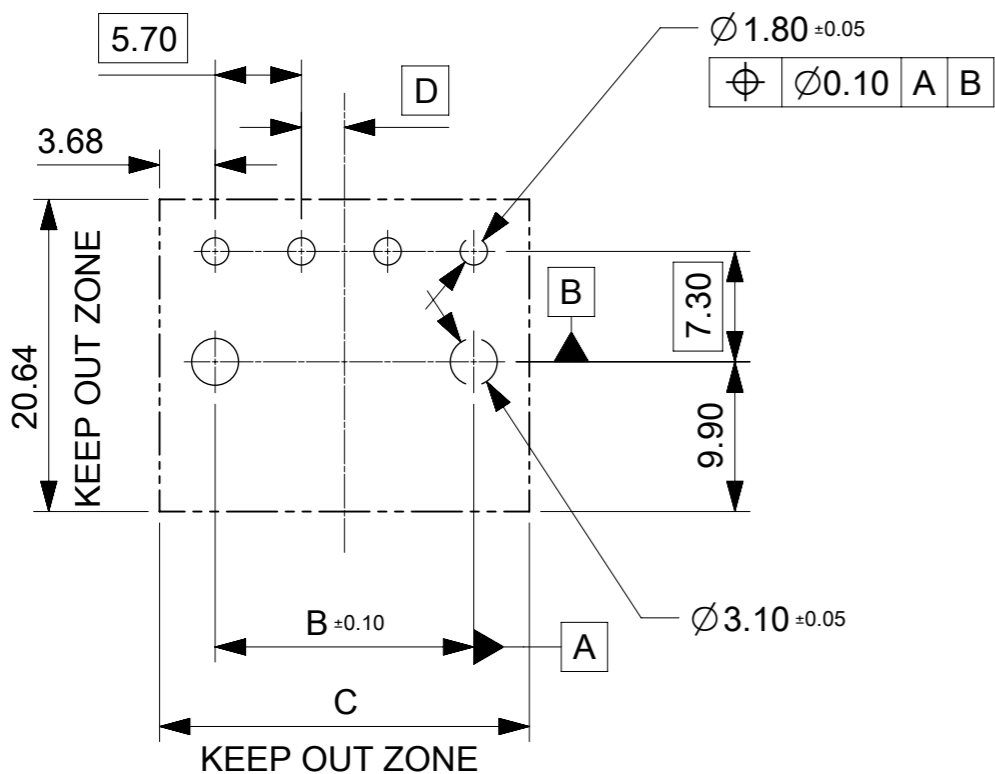
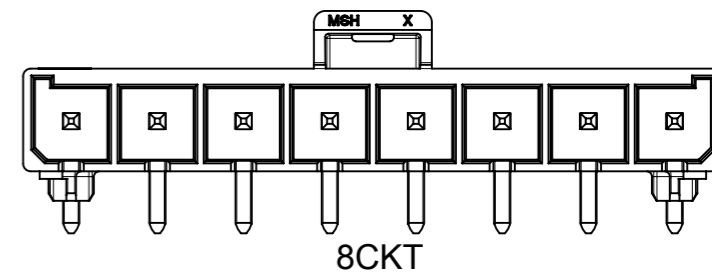
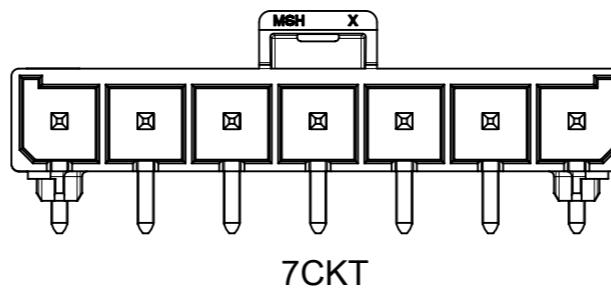
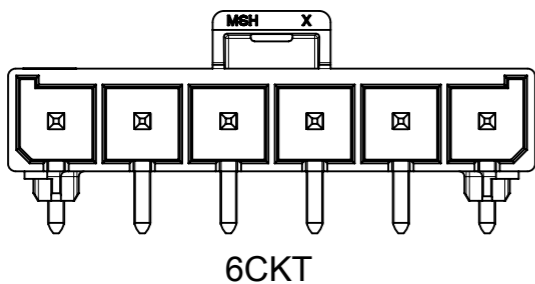
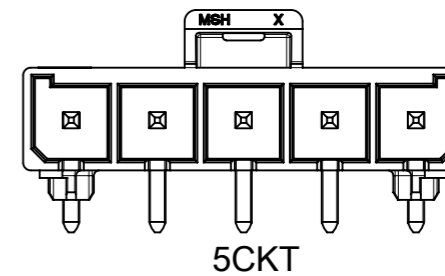
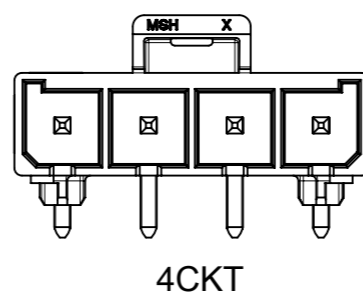
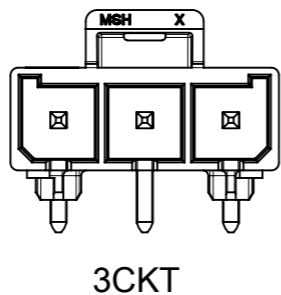
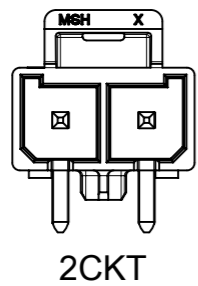


NOTES:

- MATERIAL:
HOUSING LCP, UL94V-0, GLOW WIRE CAPABLE PER IEC-60335-1 5TH EDITION, COLOR: BLACK .
TERMINAL: HIGH CONDUCTIVITY COPPER.
- TERMINAL PLATING:
(TIN) 1.52 MICROMETER MIN (60 MICROINCH MIN) REFLOWED MATTE TIN OVER
1.27 MICROMETER MIN (50 MICROINCH MIN) MIN NICKEL OVERALL.
(15 GOLD) 0.38 MICROMETER MIN (15 MICROINCH MIN) SELECTIVE GOLD ON CONTACT AREA
WITH 2.54 MICROMETER MIN (100 MICROINCHES MIN) SELECTIVE TIN ON SOLDER AREA
BOTH OVER 1.27 MICROMETER MIN (50 MICROINCHES MIN) NICKEL OVERALL.
(30 GOLD) 0.76 MICROMETER MIN (30 MICROINCH MIN) SELECTIVE GOLD ON CONTACT AREA
WITH 2.54 MICROMETER MIN (100 MICROINCHES MIN) SELECTIVE TIN ON SOLDER AREA
BOTH OVER 1.27 MICROMETER MIN (50 MICROINCHES MIN) NICKEL OVERALL.
- PRODUCT SPECIFICATION 1720631000-PS.
- PACKAGING SPECIFICATION SEE TABLE.
- PART MATES WITH MOLEX PART NUMBER 200456 SERIES.
- APPLICATION SPECIFICATION: 768232000-AS
- PARTS CONFORM TO CLASS "B" REQUIREMENTS OF COSMETIC SPECIFICATION PS-45499-002.
- TO AVOID INTERFERENCE BETWEEN RECEPTACLE AND PCB, HEADER MUST BE PLACED WITHIN 12.00MM MAX FROM EDGE OF PCB

THIS DRAWING CONTAINS INFORMATION THAT IS PROPRIETARY TO MOLEX ELECTRONIC TECHNOLOGIES, LLC AND SHOULD NOT BE USED WITHOUT WRITTEN PERMISSION		CURRENT REV DESC:		molex	
DIMENSION UNITS	SCALE				
mm	NTS			MEGA-FIT S/R HEADER ASSEMBLY(R/A)	
GENERAL TOLERANCES (UNLESS SPECIFIED)				PRODUCT CUSTOMER DRAWING	
ANGULAR TOL	± 3.0 °			DOCUMENT NUMBER	
4 PLACES	±	EC NO: 743219	2023/03/14	2002412000	
3 PLACES	±	DRWN: WYATTH5	2023/03/22	DOC TYPE	DOC PART
2 PLACES	± 0.25	CHK'D: XQZHANG	2023/03/22	PSD	000
1 PLACE	± 0.35	APPR: XQZHANG	2023/03/22	D2	
0 PLACES	±	INITIAL REVISION:		REVISION	
DRAFT WHERE APPLICABLE MUST REMAIN WITHIN DIMENSIONS		DRWN: YXZHENG	2016/09/22	SHEET NUMBER	
THIRD ANGLE PROJECTION		APPR: YXZHENG	2018/08/06	SEE TABLE	GENERAL MARKET
DRAWING		SERIES	MATERIAL NUMBER	CUSTOMER	1 OF 3
A3-SIZE		200241	SEE TABLE	GENERAL MARKET	


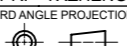


PCB LAYOUT:
 1.COMPONENT SIDE
 2.RECOMMEND PCB THICKNESS:1.58MM/.062IN TO 2.36MM/.093IN

THIS DRAWING CONTAINS INFORMATION THAT IS PROPRIETARY TO MOLEX ELECTRONIC TECHNOLOGIES, LLC AND SHOULD NOT BE USED WITHOUT WRITTEN PERMISSION									
DIMENSION UNITS		SCALE		CURRENT REV DESC:				molex	
mm		NTS							
GENERAL TOLERANCES (UNLESS SPECIFIED)				EC NO: 743219				MEGA-FIT S/R HEADER ASSEMBLY(R/A)	
ANGULAR TOL $\pm 3.0^\circ$				DRWN: WYATTH5 2023/03/14				PRODUCT CUSTOMER DRAWING	
4 PLACES \pm				CHK'D: XQZHANG 2023/03/22				DOCUMENT NUMBER	
3 PLACES ± 0.25				APPR: XQZHANG 2023/03/22				2002412000	
2 PLACES ± 0.35				INITIAL REVISION:				DOC TYPE	
1 PLACE \pm				DRWN: YXZHENG 2016/09/22				PSD	
0 PLACES \pm				APPR: YXZHENG 2018/08/06				000	
DRAFT WHERE APPLICABLE MUST REMAIN WITHIN DIMENSIONS				THIRD ANGLE PROJECTION		DRAWING		SHEET NUMBER	
				A3-SIZE		SERIES		2 OF 3	
				200241		MATERIAL NUMBER		GENERAL MARKET	
				SEE TABLE		CUSTOMER			

CKT SIZE	RESIN COLER	PART NO.	PLATING	DIM.A	DIM.B	DIM.C	DIM.D	PK DRAW NUMBER
2	BLACK	2002411212	TIN	12.05	N/A	13.05	2.85	2002412000 (TRAY PK SPEC)
3		2002411213		17.75	11.40	18.75	0.00	
4		2002414214		23.45	17.10	24.45	2.85	
5		2002411215		29.15	22.80	30.15	0.00	
6		2002411216		34.85	28.50	35.85	2.85	
7		2002411217		40.55	34.20	41.55	0.00	
8		2002411218		46.25	39.90	47.25	2.85	
2		2002411222		15" GOLD	12.05	N/A	13.05	
3		2002411223	17.75		11.40	18.75	0.00	
4		2002411224	23.45		17.10	24.45	2.85	
5		2002411225	29.15		22.80	30.15	0.00	
6		2002411226	34.85		28.50	35.85	2.85	
7		2002411227	40.55		34.20	41.55	0.00	
8		2002411228	46.25		39.90	47.25	2.85	
2		2002411232	30" GOLD		12.05	N/A	13.05	
3		2002411233		17.75	11.40	18.75	0.00	
4		2002411234		23.45	17.10	24.45	2.85	
5		2002411235		29.15	22.80	30.15	0.00	
6		2002411236		34.85	28.50	35.85	2.85	
7		2002411237		40.55	34.20	41.55	0.00	
8		2002411238		46.25	39.90	47.25	2.85	

CKT SIZE	RESIN COLER	PART NO.	PLATING	DIM.A	DIM.B	DIM.C	DIM.D	PK DRAW NUMBER
2	BLACK	2002411912	TIN	12.05	N/A	13.05	2.85	2002411900 (TAPE&REEL PK SPEC)
3		2002411913		17.75	11.40	18.75	0.00	
4		2002411914		23.45	17.10	24.45	2.85	
5		2002411915		29.15	22.80	30.15	0.00	
6		2002411916		34.85	28.50	35.85	2.85	
7		2002411917		40.55	34.20	41.55	0.00	
8		2002411918		46.25	39.90	47.25	2.85	
2		2002411922		15" GOLD	12.05	N/A	13.05	
3		2002411923	17.75		11.40	18.75	0.00	
4		2002411924	23.45		17.10	24.45	2.85	
5		2002411925	29.15		22.80	30.15	0.00	
6		2002411926	34.85		28.50	35.85	2.85	
7		2002411927	40.55		34.20	41.55	0.00	
8		2002411928	46.25		39.90	47.25	2.85	
2		2002411932	30" GOLD		12.05	N/A	13.05	
3		2002411933		17.75	11.40	18.75	0.00	
4		2002411934		23.45	17.10	24.45	2.85	
5		2002411935		29.15	22.80	30.15	0.00	
6		2002411936		34.85	28.50	35.85	2.85	
7		2002411937		40.55	34.20	41.55	0.00	
8		2002411938		46.25	39.90	47.25	2.85	

THIS DRAWING CONTAINS INFORMATION THAT IS PROPRIETARY TO MOLEX ELECTRONIC TECHNOLOGIES, LLC AND SHOULD NOT BE USED WITHOUT WRITTEN PERMISSION											
DIMENSION UNITS	SCALE	CURRENT REV DESC:					 MEGA-FIT S/R HEADER ASSEMBLY(R/A)				
mm	NTS										
GENERAL TOLERANCES (UNLESS SPECIFIED)							PRODUCT CUSTOMER DRAWING				
ANGULAR TOL	± 3.0 °						DOCUMENT NUMBER		DOC TYPE	DOC PART	REVISION
4 PLACES	±	EC NO: 743219					2002412000		PSD	000	D2
3 PLACES	±	DRWN: WYATTH5					2016/09/22				
2 PLACES	± 0.25	CHK'D: XQZHANG					2018/08/06				
1 PLACE	± 0.35	APPR: XQZHANG									
0 PLACES	±	INITIAL REVISION:									
DRAFT WHERE APPLICABLE MUST REMAIN WITHIN DIMENSIONS		THIRD ANGLE PROJECTION	DRAWING	SERIES	MATERIAL NUMBER	CUSTOMER	SHEET NUMBER				
			A3-SIZE	200241	SEE TABLE	GENERAL MARKET	3 OF 3				