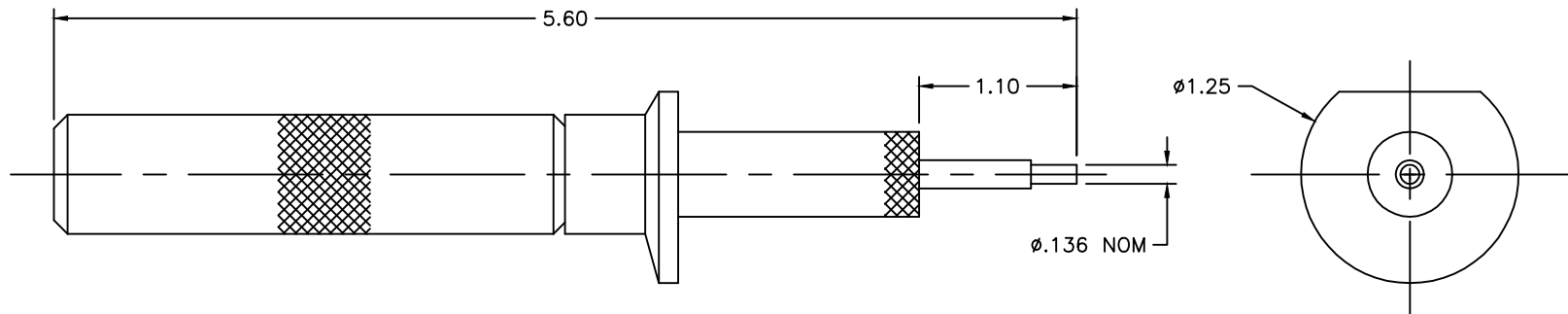


REVISIONS			
REV	DESCRIPTION	DATE	APPROVED
A1	REVISED PER ECO-13-004977	03/18/13	P. GODFREY





NOTES: UNLESS OTHERWISE SPECIFIED

\* THIS TOOL IS USED FOR REMOVING ELECTRICAL CONTACTS FROM CONNECTOR BLOCKS. REFERENCE (MS24256R16).

If this document is printed it becomes uncontrolled. Check for the latest revision

Raychem Application Devices  
CUSTOMER DRAWING

UNLESS OTHERWISE SPECIFIED DIMENSIONS ARE IN INCHES.							
.XXX ± 0.005	ANGLES: ± 1° 0'						
DECIMALS: .XX ± 0.010	ROUGHNESS IN MICRON	<b>TITLE:</b> AD-1526 CONTACT REMOVAL TOOL FOR #6 SLODERTACT					
.X ± 0.015							
DIMENSIONING AND TOLERANCING PER ASME Y14.5-2009		<b>DOCUMENT NO:</b> AD-1526-5					
<small>THIS DRAWING AND THE INFORMATION SET FORTH HEREON ARE THE PROPERTY OF TYCO ELECTRONICS CORP. PUBLICATION, DUPLICATION, DISCLOSURE, OR USE FOR ANY PURPOSE, OTHER THAN FOR THE CUSTOMER'S DIRECT NEEDS FOR THE APPLICATION CONCERNED, ARE PROHIBITED. TYCO ELECTRONICS RESERVES THE RIGHT TO AMEND THE DRAWING AND THE INFORMATION SET FORTH HEREON AT ANY TIME. TYCO ELECTRONICS' OBLIGATIONS SHALL BE ONLY AS SET FORTH IN TYCO ELECTRONICS' TERMS AND CONDITIONS OF SALE FOR THIS PRODUCT. USERS SHOULD INDEPENDENTLY EVALUATE THE SUITABILITY OF THE PRODUCT FOR THEIR APPLICATION.</small>							
<b>DRAWN:</b> T. NGUYEN	<b>CAD FILE:</b> AD1526-5.DWG	<b>CAGE CODE:</b> 06090	<b>RPN:</b> 993909-000	<b>SIZE:</b> A	<b>SCALE:</b> 1:1	<b>THIRD ANGLE PROJ.</b> 	<b>SHEET:</b> 1 OF 1