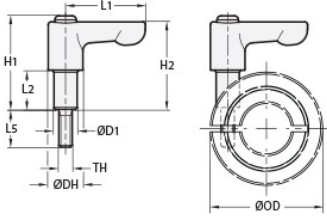




LF45-CL-M6:18-ZS

Ruland Flat Adjustable Lever, Lever Length 45mm, Stud Thread M6, Stud Length 16mm, Sleeve Length 18mm, Zinc Lever, Stainless Steel Inserts




Description

Ruland LF45-CL-M6:18-ZS is an adjustable clamping lever with a 45mm long flat handle, M6 threaded stud, 16mm stud length, 18mm sleeve, and 38.5mm overall height. The threaded stud is designed to replace standard M6x18 hardware in Ruland one- and two-piece shaft collars. Once installed on the shaft collar, the lever is turned until the user reaches their desired torque. It does not require any tools to install, making it ideal for applications that require frequent setup changes and adjustments. LF45-CL-M6:18-ZS is black to seamlessly integrate with the aesthetics of most equipment. It is manufactured by Otto Ganter, stocked by Ruland, and RoHS3 and REACH compliant.

Product Specifications

Thread (TH)	M6	Stud Length LS	16 mm
Lever Length L1	45 mm	Overall Height H1	38.5 mm
Hub Height H2	36 mm	Hub Diameter DH	13 mm
Thread Pitch	1 mm	Sleeve Length L2	18 mm
Sleeve Diameter D1	10 mm	Handle Material	Zinc
Handle Color	Black	Insert and Screw Material	303 Stainless Steel
Weight (lbs)	0.099200	Manufacturer	JW Winco/ Otto Ganter
UPC	634529238424	Country of Origin	Germany
Tariff Code	8487.90.0080	UNSPC	31162807

Note 1 Performance ratings are for guidance only. The user must determine suitability for a particular application.

Prop 65  **WARNING** This product can expose you to chemicals including Soots, Benzene, Lead, and Nickel (metallic), known to the State of California to cause cancer, and Lead and Benzene known to the State of California to cause birth defects or other reproductive harm. For more information go to www.P65Warnings.ca.gov.