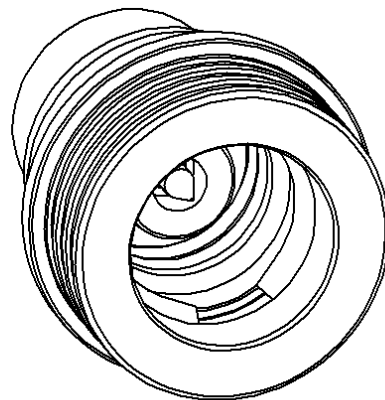
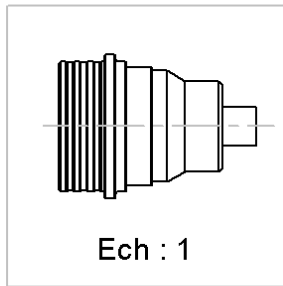
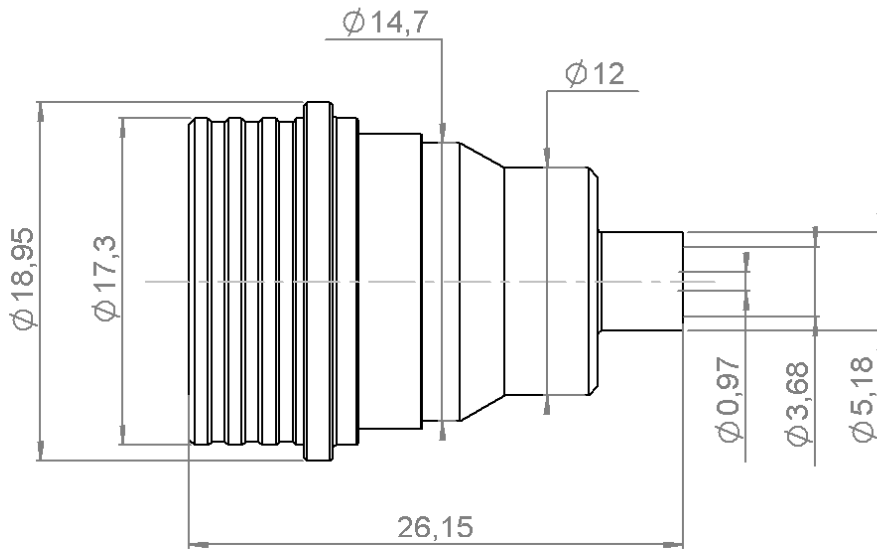


STRAIGHT PLUG SOLDER TYPE

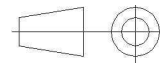
R164.051.002

CABLE .141

Series : QN



All dimensions are in mm.



COMPONENTS	MATERIALS	PLATING (µm)
BODY	BRASS	BBR 0.5 OVER SILVER 3
CENTER CONTACT	BERYLLIUM COPPER	GOLD 1.3 OVER COPPER 2.5
OUTER CONTACT	BERYLLIUM COPPER	NPGR
INSULATOR	PTFE	
GASKET	EPDM	
OTHERS PARTS	BRASS	GOLD 1 OVER COPPER 2
-	-	-
-	-	-

Issue : 1308 E

In the effort to improve our products, we reserve the right to make changes judged to be necessary.



RADIALL®

STRAIGHT PLUG SOLDER TYPE

R164.051.002

CABLE .141

Series : QN

PACKAGING

Standard	Unit	Other
50	'W' option	Contact us

SPECIFICATION

ELECTRICAL CHARACTERISTICS

Impedance		50 Ω
Frequency		*0-6 GHz
VSWR	1.05 +	0,0250 x F(GHz) Maxi
Insertion loss		0.048 √F(GHz) dB Maxi
RF leakage	- (**90 - F(GHz)) dB Maxi
Voltage rating		350 Veff Maxi
Dielectric withstanding voltage		1000 Veff mini
Insulation resistance		5000 MΩ mini

CABLE ASSEMBLY

Stripping	a	b	c	d	e	f
mm	3,17	0,00	0,00	0,00	0,00	0,00

Assembly instruction :

Recommended cable(s)
 RG 402
 KS 2
 HC80000-3
 BELN YQ43858

Characteristics indicated on this data sheet are those that can be achieved with the highest performance cable. Intrinsic limitations of the cable may diminish the performance of the assembly

Cable retention

- pull off	270 N mini
- torque	NA N.cm

MECHANICAL CHARACTERISTICS

Center contact retention		
Axial force – Mating end	27 N mini	
Axial force – Opposite end	27 N mini	
Torque	NA N.cm mini	

TOOLING

Part Number	Description	Hexagon
.	.	.
R282.053.000	STRIPPING TOOL	
R282.067.000	POINTER GAUGE	

Recommended torque		
Mating	NA N.cm	
Panel nut	NA N.cm	
Clamp nut	NA N.cm	
A/F clamp nut	0,0000 mm	

Mating life	100 Cycles mini
Weight	18,1040 g

OTHER CHARACTERISTICS

- * Usable 0-11GHz
- ** RF Leakage: -80dBm 3<F<6GHz
- *** PIM3 : -112dBm (2 x 20W at 1.8GHz)

ENVIRONMENTAL

Operating temperature	-55/+125° °C
Hermetic seal	NA Atm.cm3/s
Panel leakage	

Issue : 1308 E

In the effort to improve our products, we reserve the right to make changes judged to be necessary.



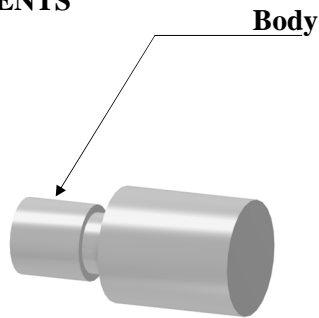
STRAIGHT PLUG SOLDER TYPE

R164.051.002

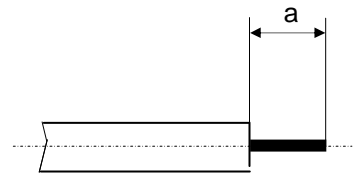
CABLE .141

Series : QN

COMPONENTS



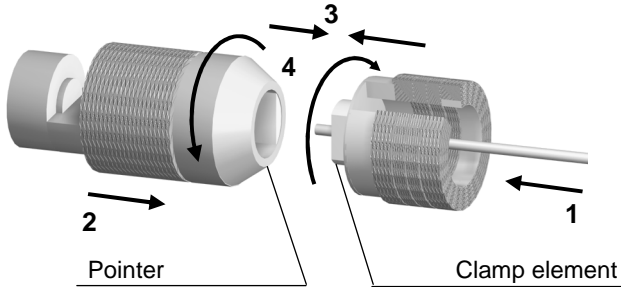
STRIPPING DIMENSIONS



We recommend a thermal preconditioning of the cable

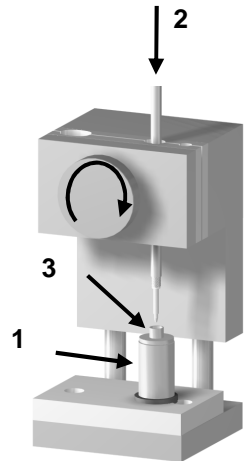
1

Insert the cable into the clamp element.
Present the pointer in front of the clamp element.
Push the cable until it stops, while holding the clamp element pushed on the hollow part of the pointer.
Turn the clamp element until the release of the pointer.



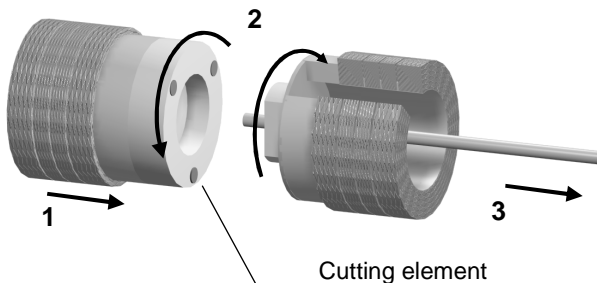
3

Position the connector onto the Assembly jig.
Slide the cable into the connector until it bottoms against the body tighten.
Put three rings of solder around the cable and solder.
After cooling, remove the assembly from the jig.



2

Present the cutting element in front of the clamp element.
Push and turn both elements, back part opposite to the front part. Once they reach the stop, pull without revolving.



Issue : 1308 E

In the effort to improve our products, we reserve the right to make changes judged to be necessary.



RADIALL®