



## 【4. 仕様 SPECIFICATION】

番号 NUMBER	項目 ITEM	仕様 REQUIREMENT
①	バンドアップ BEND UP	4°以下 / MAX.
	バンドダウン BEND DOWN	3°以下 / MAX.
	ツイスト TWISTING	3°以下 / MAX.
	ローリング ROLLING	4°以下 / MAX.
②	ベルマウス (参考値) BELL MOUTH (REF.)	0.05 ~ 0.35 mm
③	カットオフタブ長さ CUT OFF TAB LENGTH	0 ~ 0.15 mm以下 / MAX.
④	芯線突き出し長さ EXTRUDED WIRE LENGTH	0 ~ 0.5 mm
⑤	シーム SEAM	シームは閉じていること。但し開きのある場合は芯線の飛び出しなきこと。 SEAM SHALL NOT BE OPENED AND NOT WIRE ALLOWED OUT OF CRIMPING THE AREA.
≠	絶縁被覆むき長さ (参考値) WIRE STRIP LENGTH (REF.)	1.3 ~ 1.8 mm

## 【5. 圧着条件 (⑥及び⑦) CONDITIONS】

電線(UL1007相当品)を圧着した際の要件は下記による。

AFTER CRIMPING THE STRAND WIRE (EQUIVALENT TO UL1007), THE CRIMPED AREAS SHOULD BE AS FOLLOWS.

ターミナル 番号 TERMINAL NO.	電線サイズ WIRE SIZE (AWG)	圧着 ツール番号 CRIMP DIE MODEL NO.	⑥芯線圧着部高さ CONDUCTOR CRIMP HEIGHT		⑦被覆圧着部 INSULATION		圧着部引張強度 CRIMP STRENGTH (N {Kgf})
			工具 マーク TOOL MARK	高さ HEIGHT (mm)	工具 マーク TOOL MARK	参考高さ HEIGHT (REF.) (mm)	
50394 -8***	#24 (*1)	57315 -3000	C	0.60 ~0.65	6	1.35	29.4{3.0}以上 / MIN.
	#26		C	0.59 ~0.64	6	1.35	19.6{2.0}以上 / MIN.
	#28		B	0.56 ~0.61	6	1.30	9.8{1.0}以上 / MIN.
	#30		A	0.53 ~0.58	5	1.30	4.9{0.5}以上 / MIN.

注) \*1 UL1061相当品を圧着した際の条件

NOTE. AFTER CRIMPING WIRE (EQUIVALENT TO UL1061), THE CRIMPED AREA SHOULD BE AS FOLLOWS.

REVISE ON PC ONLY		TITLE:			
<b>A</b>	SEE SHEET 1 OF 4	1.25 W/B CONN. RECEPTACLE CRIMP TERMINAL <b>圧着仕様書</b>			
	REV.	DESCRIPTION	THIS DOCUMENT CONTAINS INFORMATION THAT IS PROPRIETARY TO MOLEX ELECTRONIC TECHNOLOGIES, LLC AND SHOULD NOT BE USED WITHOUT WRITTEN PERMISSION		
DOCUMENT NUMBER CS-50394		DOC. TYPE PSD	DOC. PART 001	CUSTOMER GENERAL MARKET	SHEET 2 OF 4

【6. 消耗部品一覧表 PERISHABLE PARTS LIST】

部品名称 PART NAME	部品番号 PART NO.
アンビル ANVIL	57175-2101
芯線クリンプパンチ COND. PUNCH	57175-2102
被覆クリンプパンチ INS. PUNCH	57175-2103
フロントフローティングシェア FRONT FLOATING SHEAR	57067-2006
フロントホルダー FRONT HOLDER	57067-2005

REVISE ON PC ONLY

**A**

SEE SHEET 1 OF 4

TITLE:

1.25 W/B CONN.  
RECEPTACLE CRIMP TERMINAL

**圧着仕様書**

THIS DOCUMENT CONTAINS INFORMATION THAT IS PROPRIETARY TO MOLEX ELECTRONIC TECHNOLOGIES, LLC AND SHOULD NOT BE USED WITHOUT WRITTEN PERMISSION

REV.

DESCRIPTION

DOCUMENT NUMBER  
CS-50394

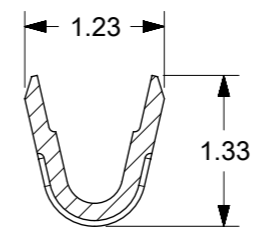
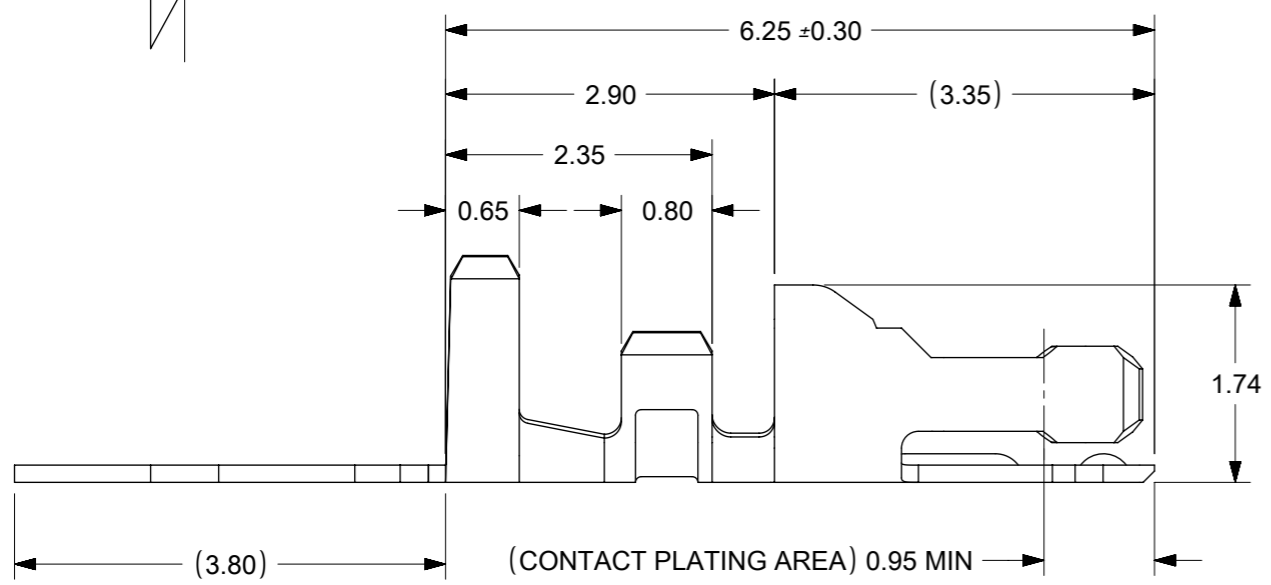
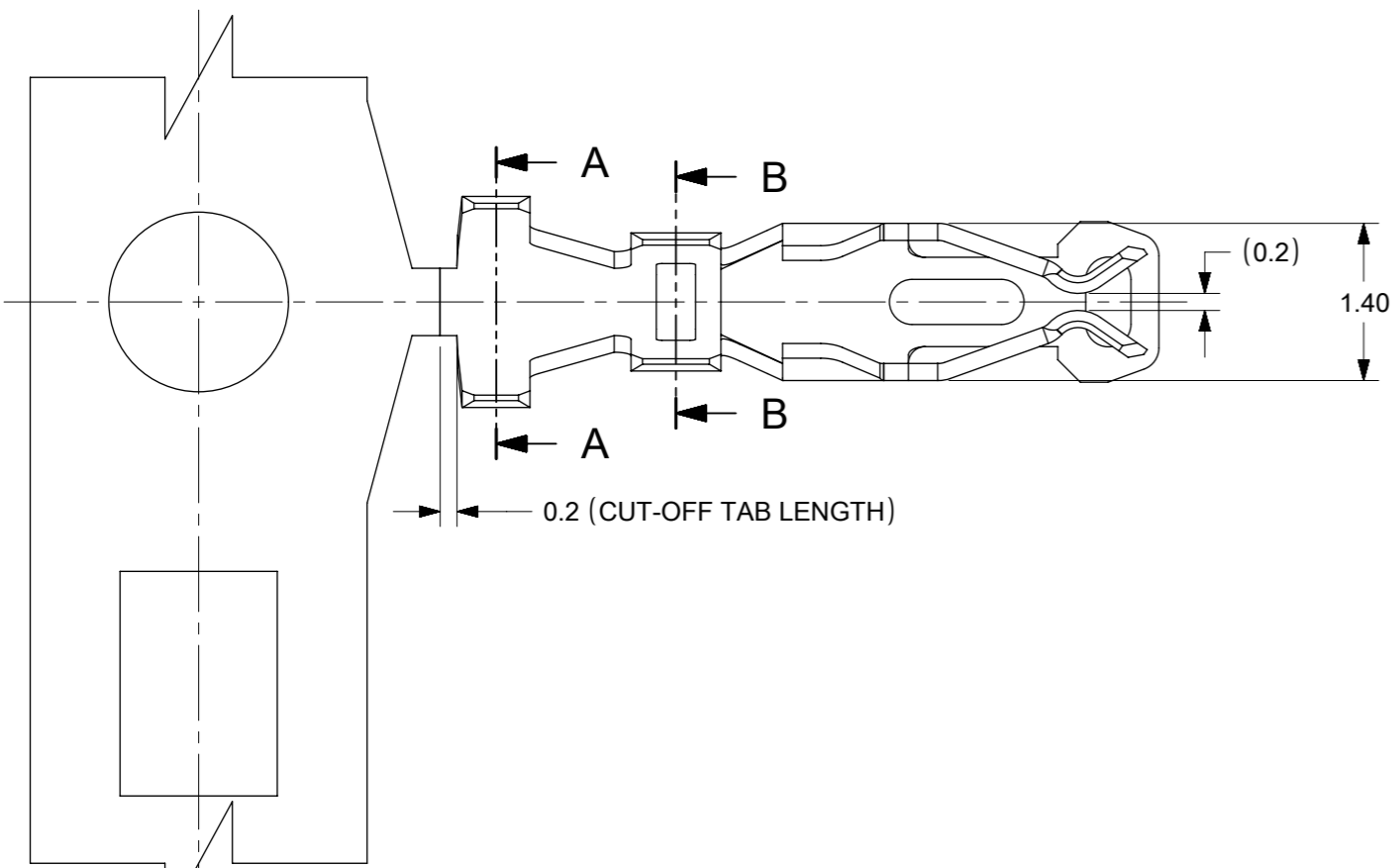
DOC. TYPE  
PSD

DOC. PART  
001

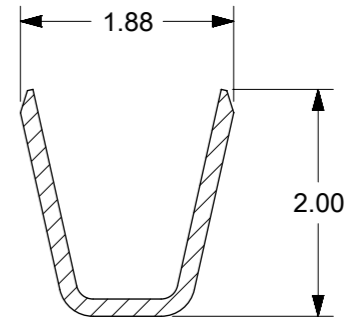
CUSTOMER  
GENERAL MARKET

SHEET  
3 OF 4

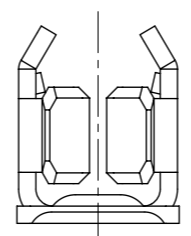




SECTION B-B



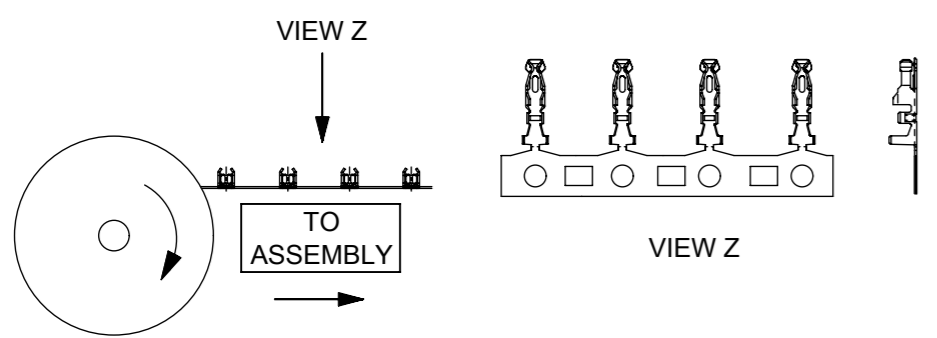
SECTION A-A



ENG. P/NS		CONTACT PLATING (NICKEL OVERALL 2-6 μm MIN)
FORM : LOOSE	FORM : CHAIN	
50394-8100	50394-8051	0.38μm GOLD MIN.
50394-8200	50394-8052	0.76μm GOLD MIN.
50394-8400	50394-8054	GOLD FLASH 0.05 - 0.125μm
50394-8500	50394-8055	2.50μm MATTE TIN MIN.

- NOTES :
- MATERIAL: COPPER ALLOY
  - APPLICABLE HOUSING : 51110-\*\*\*1  
: 51110-\*\*5\*  
: 151100-00\*\*
  - APPLICABLE WIRE: AWG #24-#30  
WIRE INSULATION OD: 1.40mm MAX.
  - CRIMPING SPECIFICATION: CS-50394

WINDING DIRECTION



THIS DRAWING CONTAINS INFORMATION THAT IS PROPRIETARY TO MOLEX ELECTRONIC TECHNOLOGIES, LLC AND SHOULD NOT BE USED WITHOUT WRITTEN PERMISSION											
QUALITY SYMBOLS ▽ = 0 ▽ = 0 ▽ = 0 ▼ = 0 ▽ = 0 ▽ = 0 ⊠ = 0 ■ = 0 ▽ = 0	RE-MASTERED IN ELECTR EC NO: 116436 DRWN: MUM CHKD: GMENARLY REV APPR: KHLIM	2016/08/17 2017/05/08 2017/05/19	GENERAL TOLERANCES (UNLESS SPECIFIED)		DIMENSION UNITS	SCALE					
			MM	INCH	MM	NTS					
			4 PLACES ±		S.Q	DATE					
			3 PLACES ±		EDPOH	1994/04/20					
			2 PLACES ± 0.2		CHK'D BY	DATE	SALES DRAWING 2.0MM GRID W TO B CONN. CRIMP TERMINAL				
			1 PLACES ±		APP'R BY	DATE					
			0 PLACES ±		LBLEE	1994/04/27					
			ANGULAR TOL = 3.0		DRAWING SIZE	THIRD ANGLE PROJECTION	PRODUCT CUSTOMER DRAWING				
			DRAFT WHERE APPLICABLE MUST REMAIN WITHIN DIMENSIONS		A3						
					SERIES	MATERIAL NUMBER	CUSTOMER	50394 SEE TABLE GENERAL MARKET			
		DOCUMENT NUMBER	DOC TYPE	DOC PART	SHEET NUMBER						
		C	SD-50394-8XXX	PSD	000	1 OF 1					

RELEASE STATUS	RELEASE DATE
----------------	--------------