



ANATECH ELECTRONICS, INC.

Manufacturer of RF & Microwave Products

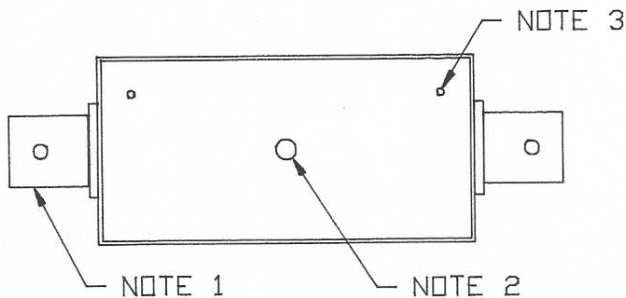
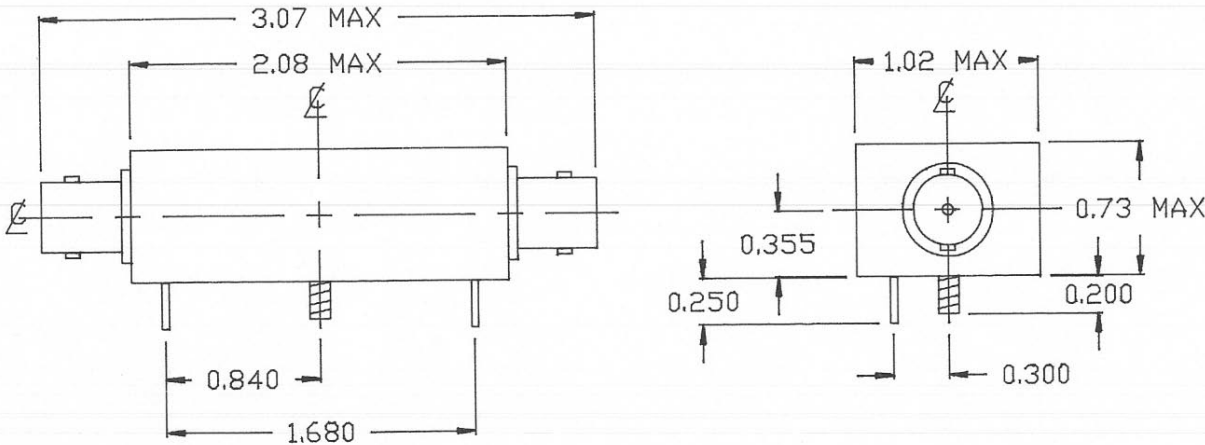


10 MHz Crystal Filter

P/N: AM10CR220

Center Frequency:	10 MHz
3 dB Bandwidth:	CF±2500 Hz (Typ) to CF±3500 Hz (Max)
Rejection @ 9.9 MHz & 10.1 MHz:	70 dB min
Insertion Loss:	1 dB max
Return Loss at Center Frequency:	15 dB min
Maximum Input Power:	14 dBm
Impedance:	50 Ohms
Connector Type:	BNC (F)
Operating Temperature	-40°C to 85°C

Outline Drawing:



NOTES:

1. CONNECTOR: BNC FEMALE (TYP-2PL)
2. STUD: 4-40 UNC (TYP-1PL)
3. .040" GROUND PIN (TYP-2PL)

To1: .XX +/- 0.02
.XXX +/- 0.005

