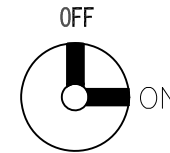
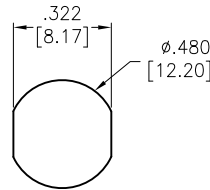
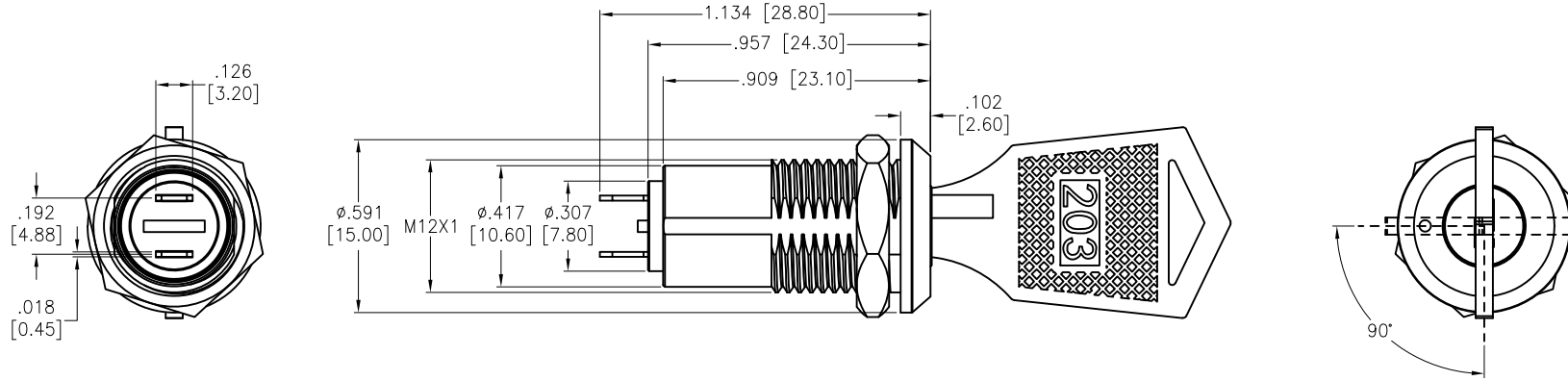


APPROVED: \_\_\_\_\_  
 DATE: \_\_\_\_\_ TITLE: \_\_\_\_\_

Rev	AWO #	Description	Date	Appr
-		RELEASED	10/15/20	
A		UPDATE DRAWING	5/12/21	JJ/RC
B		UPDATE DIM.	6/9/21	JJ/RC
C		ADDED SPEC.	8/31/21	WX/RC



FUNCTION
SP, ON-OFF

ADAM-P/N	SPEC.
SW-R-K4-A	Key pulled on both positions. Note: this would be our standard
SW-R-K4-B	Key pulled on 1 position

**SPECIFICATIONS:**

Material:  
 Body: Steel, Polished Chrome  
 Electrical:  
 The rated load: 250 VAC, 0.5A  
 24 VDC, 0.5A  
 Contact resistance: 35 mΩ max  
 Insulation resistance: 1000 mΩ min (500VDC)  
 Dielectric withstanding voltage: 1500 VAC for 1 minute  
 Endurance:  $\geq 10000$  Cycles  
 Temperature Rating:  
 Operating temperature: -25°C to +85°C  
 Environmental:  
 Lead free, RoHS compliant



UNLESS OTHERWISE SPECIFIED ALL DIMENSIONS ARE INCHES [MM]. TOLERANCES: EXCEPT AS NOTED

INCHES		HOLES	
.x	$\pm .10$	$\phi$ .x	$\pm .10$
.xx	$\pm .020$	$\phi$ .xx	$\pm .015$
.xxx	$\pm .015$	$\phi$ .xxx	$\pm .010$

**ADAM TECH** 909 Rahway Avenue,  
 Union, NJ 07083  
 Phone: 908-687-5000  
 Fax: 908-687-5710

DRAWN	OW	10/15/20
CHECKED	AC	10/15/20
APPROVED		

TITLE: SWITCH, KEY LOCK, 12MM, ON-OFF  
 PANEL MOUNT, SOLDER TERMINAL

THIS DRAWING CONTAINS INFORMATION THAT IS PROPRIETARY AND SHOULD NOT BE USED WITHOUT PRIOR WRITTEN PERMISSION FROM ADAM TECH

SIZE	PART NO.	REV.
X	SW-R-K4-X	C

REF: S00204C SCALE: NTS SHEET 1 OF 1