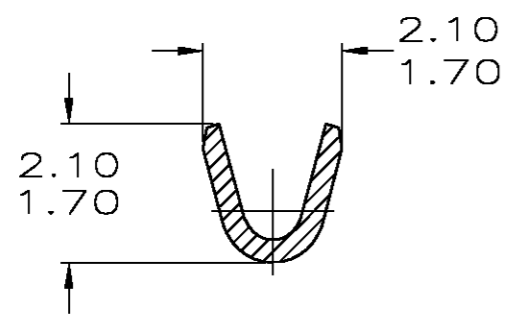
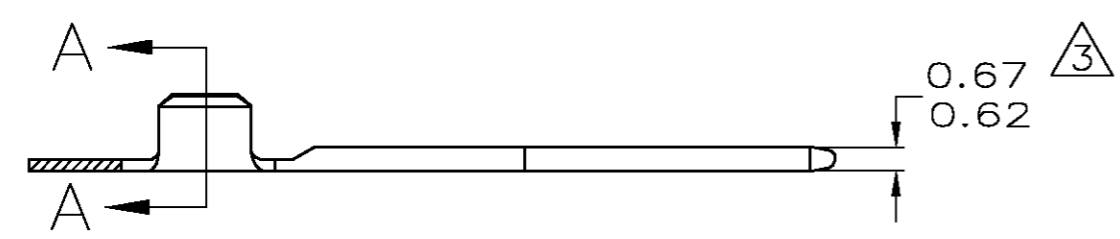
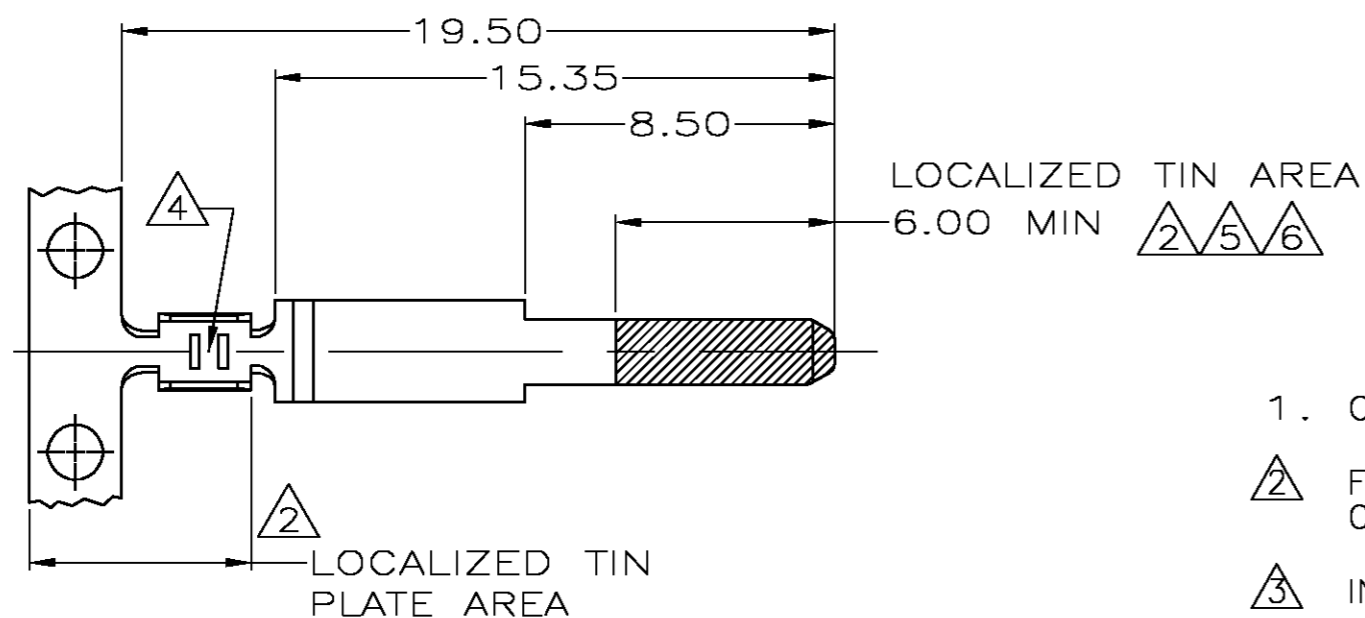


THIS DRAWING IS UNPUBLISHED. RELEASED FOR PUBLICATION
 © COPYRIGHT BY TYCO ELECTRONICS CORPORATION. ALL RIGHTS RESERVED.

LOC	DIST	REVISIONS					
GE	00	P	LTR	DESCRIPTION	DATE	DWN	APVD
		A1		REDRAWN - EC 0K40-0364-03	07MAY03	JRB	KLC



SECTION A-A
SCALE 10:1

1. CONTINUOUS STRIP ON REELS.
2. FINISH: 0.0038 TO 0.0076 TIN IN LOCALIZED AREAS OVER 0.00127 MIN NICKEL OVERALL.
3. INCLUDES PLATING THICKNESS.
4. TWO WIRE CRIMP SERRATIONS LOCATED IN THIS AREA.
5. DIM 6.0 POINT OF PLATING MEASUREMENT.
6. NO POST PLATED TOOL MARKS PERMITTED IN THIS AREA.

2	SAE CA 260 TEMP 2 BRASS	22 AWG STRANDED	184365-1
FINISH	MATERIAL	WIRE SIZE	PART NO
THIS DRAWING IS A CONTROLLED DOCUMENT.		DWN KD LYTLE 30SEP99	Tyco Electronics Corporation Harrisburg, PA 17105-3608
DIMENSIONS: MM		CHK GM INHOFFER 11OCT99	
TOLERANCES UNLESS OTHERWISE SPECIFIED:		APVD GM INHOFFER 11OCT99	NAME TAB, E-JII+ SENSOR CONNECTOR
0 PLC ± - 1 PLC ± 0.3 2 PLC ± 0.13 3 PLC ± - 4 PLC ± - ANGLES ± -		PRODUCT SPEC	RESTRICTED TO
MATERIAL SEE TABLE		APPLICATION SPEC	SIZE A3
FINISH SEE TABLE		WEIGHT -	CAGE CODE 00779
		DRAWING NO C-184365	
CUSTOMER DRAWING		SCALE 5:1	SHEET 1 OF 1
		REV A1	