

THIS DRAWING IS UNPUBLISHED.

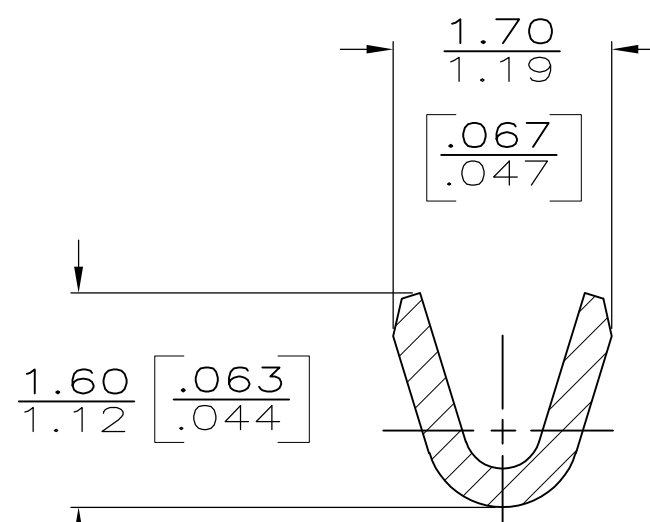
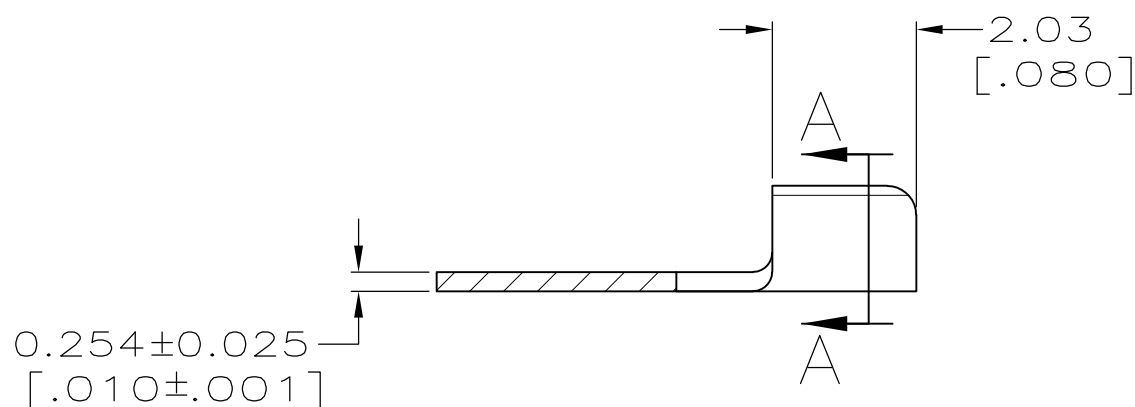
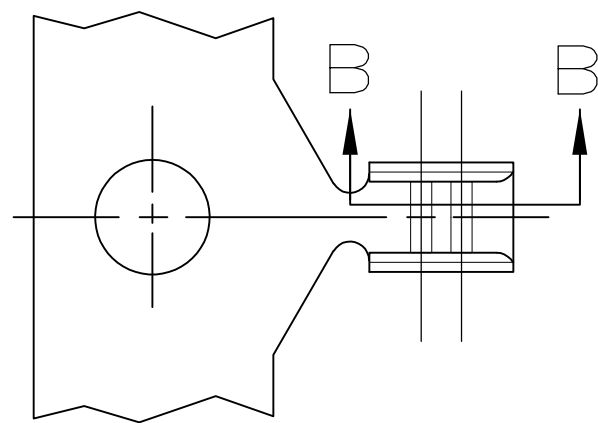
RELEASED FOR PUBLICATION

© COPYRIGHT - By -

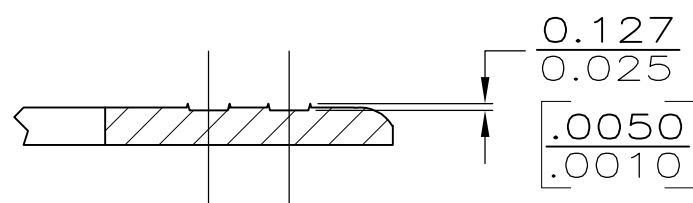
ALL RIGHTS RESERVED.

LOC	DIST	REVISIONS			
P	LTR	DESCRIPTION	DATE	DWN	APVD
AF	50	E1	REVISE PER ECR-14-007779	28MAY2014	GRZ JL

- CONTINUOUS STRIP ON REEL.
- CRIMP WIDTH 1.07 [.042], F (AMPLIVAR TYPE)
 CRIMP HEIGHT ± 0.05 [.002] = (TOTAL CMA + 1,600) / 74,000
 GENERAL APPLICATION GUIDELINES MUST BE FOLLOWED AS SPECIFIED IN CATALOG #82221
 FOR APPLICATOR INFO CALL, 1-800-722-1111
 FOR PRODUCT INFO CALL, 1-800-522-6752



SECTION A-A
SCALE 20:1



SECTION B-B
SCALE 20:1

OBSOLETE

TIN PLATE	100-300 CMA	63621-2
		63621-1
FINISH	WIRE RANGE	PART NUMBER

THIS DRAWING IS A CONTROLLED DOCUMENT.		DWN P FORTNEY 8/8/91	TE Connectivity NAME SPLICE,AMPLIVAR, SUB-MINIATURE				
DIMENSIONS: INCHES		CHK MS FEHER 8/8/91				APVD D SCHWENK 8/8/91	PRODUCT SPEC R WEAVILL 8/8/91
TOLERANCES UNLESS OTHERWISE SPECIFIED:		APPLICATION SPEC				WEIGHT -	
0 PLC ± - 1 PLC ± - 2 PLC ± 0.25 [.010] 3 PLC ± - 4 PLC ± - ANGLES ± -		FINISH SEE TABLE				CUSTOMER DRAWING	
MATERIAL BRASS		SCALE 10:1		SHEET 1 OF 1	RESTRICTED TO -		
		SIZE A3		CAGE CODE 00779	DRAWING NO C-63621		
		SCALE 10:1		SHEET 1 OF 1	REV E1		