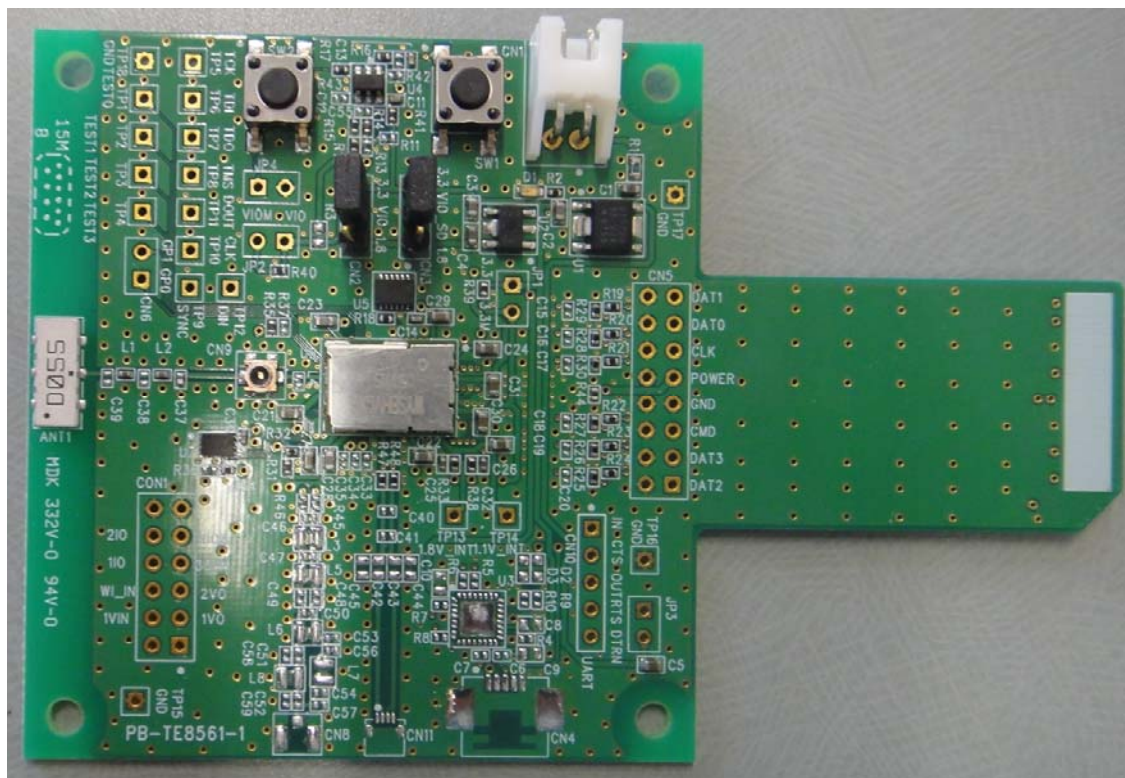


Wireless LAN and Bluetooth[®] Module Evaluation Board

WBSBHVGXG



This evaluation board is an object for experiment of operation, and does not guarantee quality. Moreover, the conditions of a module of operation are not recommended in the schematic, the parts, the software, etc. currently used for evaluation board.

ATTENTION: This module requires device drivers that are under Japan export control. Depending on the customer's country and application (e.g. weapons), TAIYO YUDEN CO., LTD. may not be able to provide these drivers to all customers. Please contact your local TAIYO YUDEN CO., LTD. sales office for additional information.

To contact your local sales office and for additional product information, please visit www.ty-top.com.

TABLE OF CONTENTS

INTRODUCTION	4
CONFORMITY MODULE	4
ACCESSORIES.....	4
RECOMMENDATION OPERATION ENVIRONMENT	4
THE EXAMPLE OF CONNECTION	4
EVALUATION BOARD LAYOUT	5
PIN DESCRIPTION OF EVALUATION BOARD.....	5
BOM OF EVALUATION BOARD.....	6 - 8
SCHEMATIC OF EVALUATION BOARD.....	9-11

Rev. Records

8-Jan.2016> Ver.1.0 Released

17-Mar.2016>Ver.1.1 Added descriptions to the second page

18-Aug.2016>Ver.1.2 Added Schematic and correct the BOM(R42,R38,C14)

6-Apr. 2017>Ver.1.3 Minor change

25-Aug. 2017>Ver.1.4 Update RECOMMENDATION OPERATION ENVIRONMENT

Introduction

This evaluation board is developed for communication test of **Wireless LAN** and **Bluetooth®** module which TAIYO YUDEN CO., LTD. develops and sells.

This evaluation board makes it possible to perform easily the communication test of **Wireless LAN** and **Bluetooth®** module of TAIYO YUDEN CO., LTD..

Conformity module

WYSBHVGXG

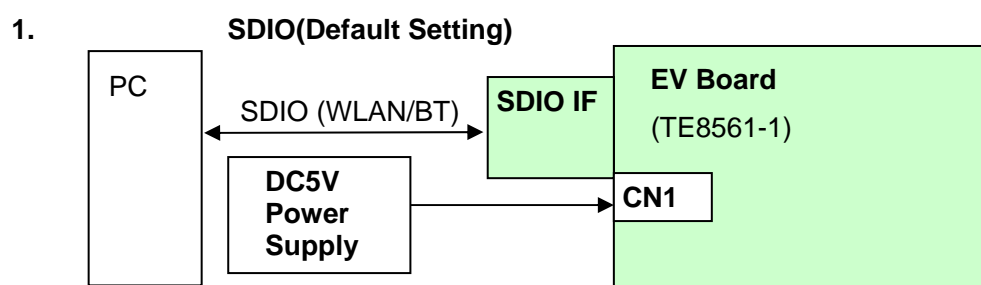
Accessories

1	Evaluation Board (TE8561-1)	1 piece
2	DC Power Cable	1 piece

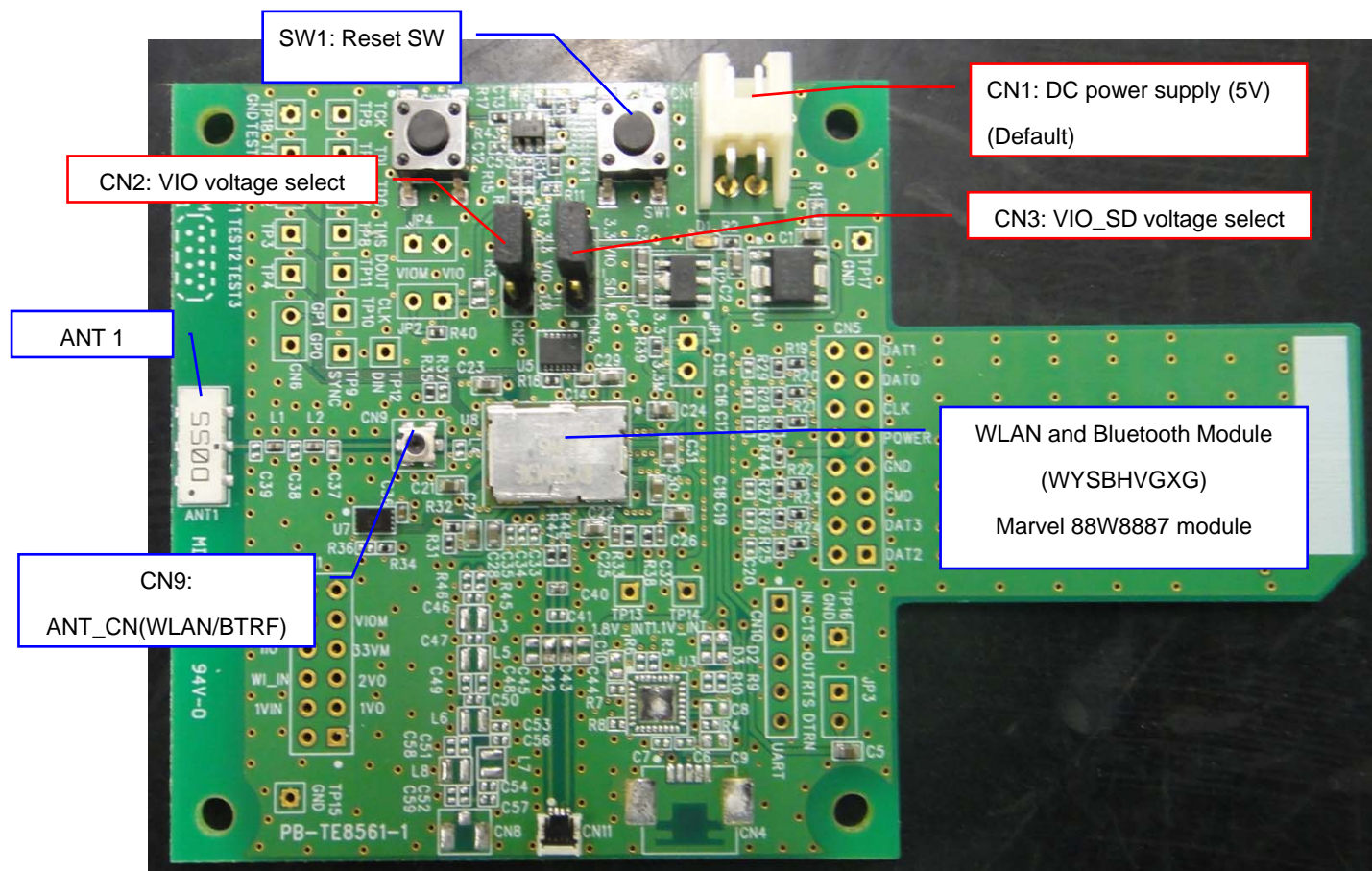
Recommendation operation environment

PC with Linux Fedora18 with software development option and SDIO interface(CPU 1000MHz or higher)
 Attention: PC with SDIO is required. Although SDIO and SD Memory Card have the same slot shape, they are not compatible. WLAN Module and Evaluation Board will not work if they are connected to SD memory card slot.

The example of connection



Evaluation board layout



Pin description of evaluation board

TE8561-1

CN1: DC Power Supply

No.	Pin name	Direction	Description
1	5V	Input	5.0V input.
2	GND	GND	Ground

CN2: VIO Voltage Select (Default Setting: 1-2 short.)

No.	Pin name	Direction	Description
1	3.3V	Output	3.3V output.
2	VIO	Input	Input for VIO.
3	1.8V	Output	1.8V output.

CN3: VIO_SD Voltage Select (Default Setting: 1-2 short.)

No.	Pin name	Direction	Description
1	3.3V	Output	3.3V output.
2	VIO	Input	Input for VIO_SD.
3	1.8V	Output	1.8V output.

WBSBHVXG

TAIYO YUDEN CO., LTD.

BOM of evaluation board

TE8561-1

Ref Name	Description	Value	Parts name and standard	Supplier
ANT1	Dual ANTENNA	2.4/5GHz	AH104N2450D1	TAIYO YUDEN CO., LTD.
U1	IC(LDO 3.3V)		S-1172B33-E6T1G	SII or equivalent
U2	IC(LDO1.8V)		S-1170B18UC-OTDTF	SII or equivalent
U3	N.M.			
U4	IC (Reset voltage detector)		TPS3808G01	TI or equivalent
U5	IC(32.768kHz clock)		SG-3030LC	EPSON or equivalent
U7	N.M			
U8	Module		WYSBHVXG	TAIYO YUDEN CO., LTD.
SW1	SWITCH		HP03-15AFKP2	Nikkai or equivalent
SW2	SWITCH		HP03-15AFKP2	Nikkai or equivalent
CN1	CONNECTOR		S2B-XH-A	JST or equivalent
CN2	CONNECTOR		PIN_HEADER_S3	
CN3	CONNECTOR		PIN_HEADER_S3	
CN4	N.M.			
CN5	N.M.			
CN6	N.M.			
CN8	N.M.			
CN9	RF CONNECTOR		MM8430-2610	MURATA
CN10	N.M.			
CN11	N.M.			
CON1	N.M.			
JP1	N.M.			
JP2	N.M.			
JP3	N.M.			
JP4	N.M.			
C1	CAPACITOR	4.7uF	LMK107 BJ475KA	TAIYO YUDEN CO., LTD.
C2	CAPACITOR	4.7uF	LMK107 BJ475KA	TAIYO YUDEN CO., LTD.
C3	CAPACITOR	4.7uF	LMK107 BJ475KA	TAIYO YUDEN CO., LTD.
C4	CAPACITOR	4.7uF	LMK107 BJ475KA	TAIYO YUDEN CO., LTD.
C5	CAPACITOR	10uF	JMK107 BJ106MA	TAIYO YUDEN CO., LTD.
C6	N.M.			
C7	N.M.			
C8	N.M.			
C9	N.M.			
C10	N.M.			
C11	CAPACITOR	0.1uF	EMK105 BJ104KV	TAIYO YUDEN CO., LTD.
C12	N.M.	-		
C13	CAPACITOR	0.1uF	EMK105 BJ104KV	TAIYO YUDEN CO., LTD.
C14	RESISTOR	10kohm	MCR01 MZS J 103	ROHM or equivalent
C15	N.M.			
C16	N.M.			
C17	N.M.			
C18	N.M.			
C19	N.M.			
C20	N.M.			
C21	CAPACITOR	10uF	JMK107 BJ106MA	TAIYO YUDEN CO., LTD.
C22	CAPACITOR	10uF	JMK107 BJ106MA	TAIYO YUDEN CO., LTD.
C23	CAPACITOR	10uF	JMK107 BJ106MA	TAIYO YUDEN CO., LTD.

WBSBHVXG

TAIYO YUDEN CO., LTD.

Ref Name	Description	Value	Parts name and standard	Supplier
C24	CAPACITOR	10uF	JMK107 BJ106MA	TAIYO YUDEN CO., LTD.
C25	CAPACITOR.	10pF	EMK105 CH100J	TAIYO YUDEN CO., LTD.
C26	CAPACITOR	10uF	JMK107 BJ106MA	TAIYO YUDEN CO., LTD.
C27	CAPACITOR	10uF	JMK107 BJ106MA	TAIYO YUDEN CO., LTD.
C28	CAPACITOR	10uF	JMK107 BJ106MA	TAIYO YUDEN CO., LTD.
C29	CAPACITOR	10uF	JMK107 BJ106MA	TAIYO YUDEN CO., LTD.
C30	CAPACITOR	10uF	JMK107 BJ106MA	TAIYO YUDEN CO., LTD.
C31	CAPACITOR	10uF	JMK107 BJ106MA	TAIYO YUDEN CO., LTD.
C32	CAPACITOR.	10pF	EMK105 CH100J	TAIYO YUDEN CO., LTD.
C33	N.M.			
C34	N.M.			
C35	N.M.			
C36	CAPACITOR	0.01uF	EMK105 BJ103KV	TAIYO YUDEN CO., LTD.
C37	INDUCTOR	2.2nH	HK 1005 2N2S	TAIYO YUDEN CO., LTD.
C38-C39	N.M.			
C40	N.M.			
C41	N.M.			
C42	N.M.			
C43	N.M.			
C44-C59	N.M.			
L1	CAPACITOR	0.6pF	EVK105 CH0R6BW	TAIYO YUDEN CO., LTD.
L2	RESISTOR	0ohm	MCR01 MZS J 000	ROHM or equivalent
L3-L8	N.M.			
R1	RESISTOR	0ohm	MCR01 MZS J 000	ROHM or equivalent
R2	RESISTOR	47ohm	MCR01 MZS J 470	ROHM or equivalent
R3	N.M.			
R4	N.M.			
R5	N.M.			
R6	N.M.			
R7	N.M.			
R8	N.M.			
R9	N.M.			
R10	N.M.			
R11	N.M.			
R12	RESISTOR	0ohm	MCR01 MZS J 000	ROHM or equivalent
R13	N.M.			
R14	RESISTOR	300kohm	MCR01 MZS J 304	ROHM or equivalent
R15	RESISTOR	100kohm	MCR01 MZS J 104	ROHM or equivalent
R16	RESISTOR	0ohm	MCR01 MZS J 000	ROHM or equivalent
R17	N.M.			
R18	RESISTOR	0ohm	MCR01 MZS J 000	ROHM or equivalent
R19	RESISTOR.	22ohm	MCR01 MZS J 220	ROHM or equivalent
R20	RESISTOR.	22ohm	MCR01 MZS J 220	ROHM or equivalent
R21	RESISTOR.	22ohm	MCR01 MZS J 220	ROHM or equivalent
R22	RESISTOR.	22ohm	MCR01 MZS J 220	ROHM or equivalent
R23	RESISTOR.	22ohm	MCR01 MZS J 220	ROHM or equivalent
R24	RESISTOR	22ohm	MCR01 MZS J 220	ROHM or equivalent
R25	RESISTOR	47kohm	MCR01 MZS J 473	ROHM or equivalent
R26	RESISTOR	47kohm	MCR01 MZS J 473	ROHM or equivalent
R27	RESISTOR	47kohm	MCR01 MZS J 473	ROHM or equivalent
R28	RESISTOR	47kohm	MCR01 MZS J 473	ROHM or equivalent
R29	RESISTOR	47kohm	MCR01 MZS J 473	ROHM or equivalent
Ref Name	Description	Value	Parts name and standard	Supplier

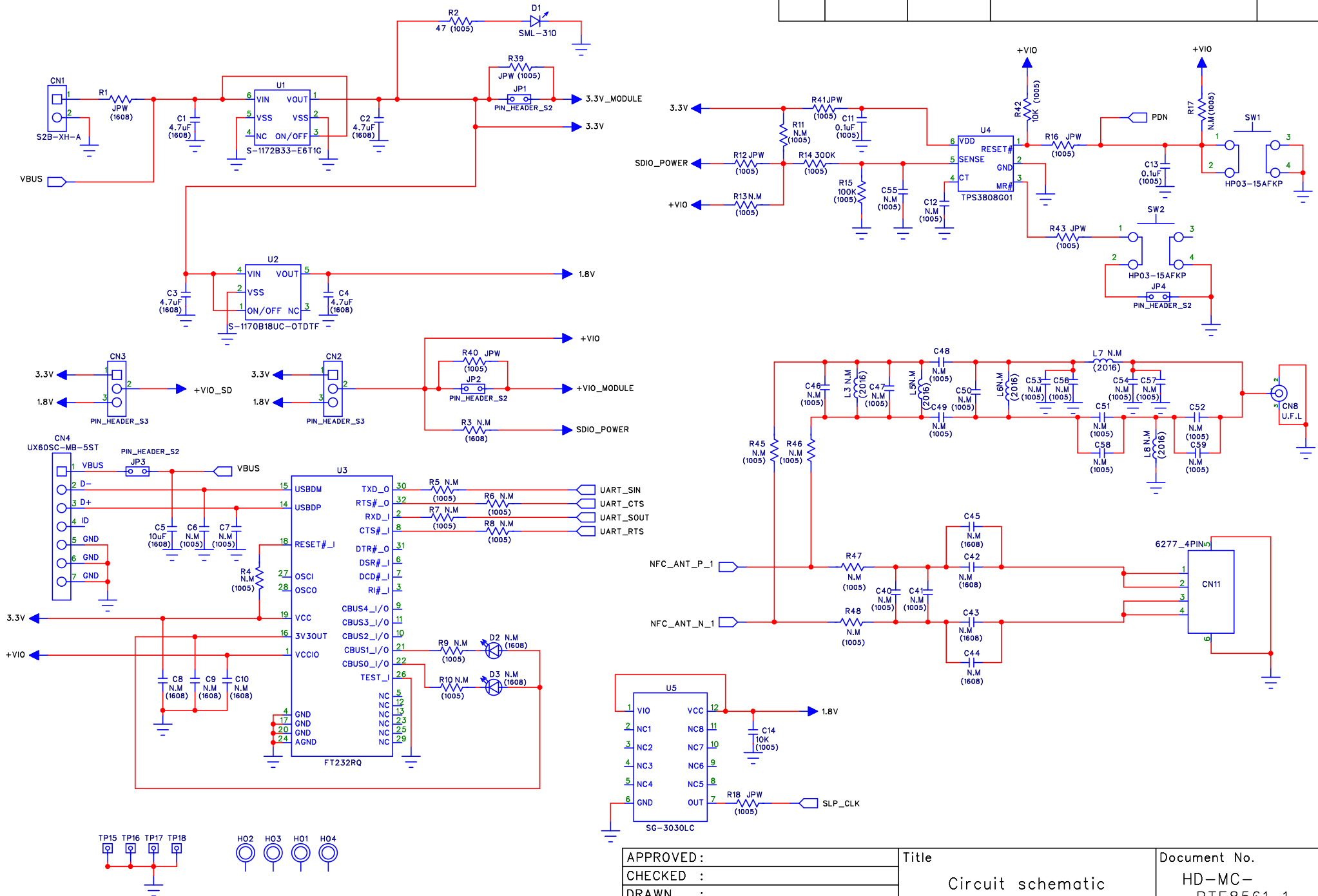
TAIYO YUDEN CO., LTD.

WBSBHVXG

TAIYO YUDEN CO., LTD.

R30	RESISTOR	47kohm	MCR01 MZS J 473	ROHM or equivalent
R31	RESISTOR	0ohm	MCR01 MZS J 000	ROHM or equivalent
R32	RESISTOR	0ohm	MCR01 MZS J 000	ROHM or equivalent
R33	RESISTOR	0ohm	MCR01 MZS J 000	ROHM or equivalent
R34	RESISTOR	100kohm	MCR01 MZS J 104	ROHM or equivalent
R35	RESISTOR	100kohm	MCR01 MZS J 104	ROHM or equivalent
R36	N.M.			
R37	N.M.			
R38	N.M.			
R39	RESISTOR	0ohm	MCR01 MZS J 000	ROHM or equivalent
R40	RESISTOR	0ohm	MCR01 MZS J 000	ROHM or equivalent
R41	RESISTOR	0ohm	MCR01 MZS J 000	ROHM or equivalent
R42	RESISTOR	100ohm	MCR01 MZS J 104	ROHM or equivalent
R43	RESISTOR	0ohm	MCR01 MZS J 000	ROHM or equivalent
R44	RESISTOR	1kohm	MCR01 MZS J 102	ROHM or equivalent
R45	N.M.			
R46	N.M.			
R47	N.M.			
R48	N.M.			
D1	LED		SML-310	ROHM or equivalent
D2	N.M.			
D3	N.M.			
PCB	PCB		PB-TE8561-1	

REV	ECO	APPROVED	DESCRIPTION	DATE

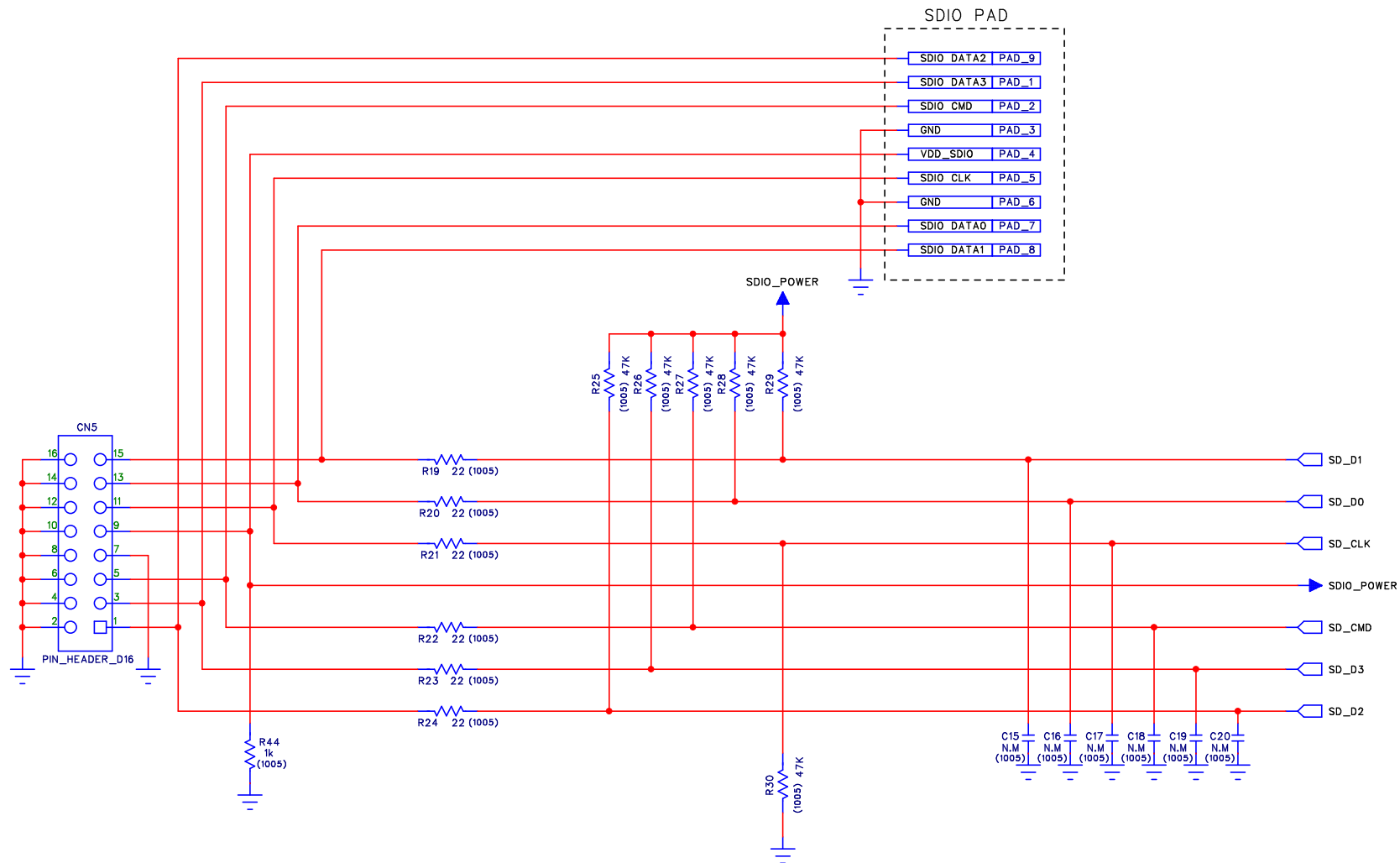


APPROVED :	
CHECKED :	
DRAWN :	
DESIGNED :	

Title	Circuit schematic
-------	-------------------

Document No.	HD-MC-BTE8561-1
--------------	-----------------

REV	ECO	APPROVED	DESCRIPTION	DATE

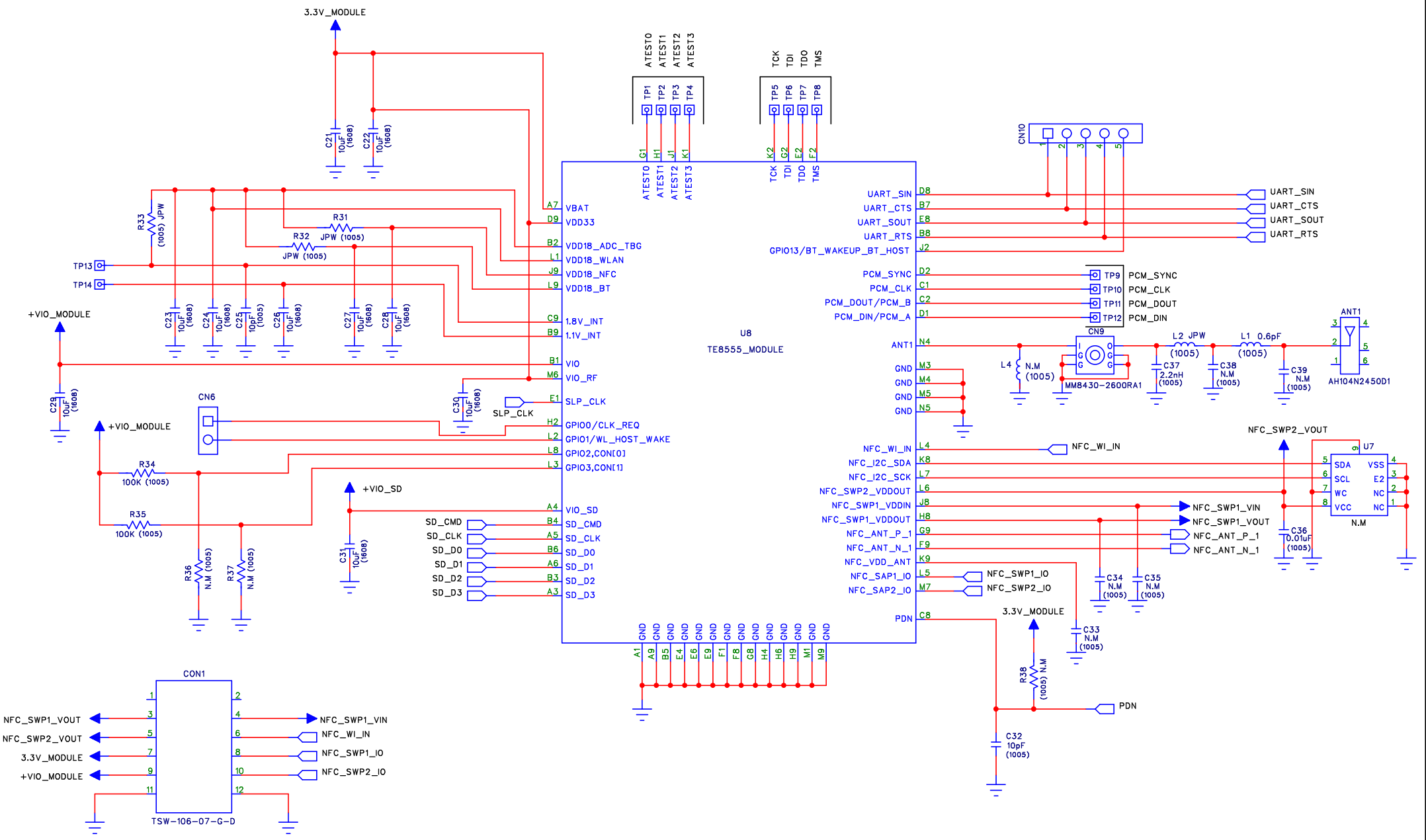


APPROVED :
CHECKED :
DRAWN :
DESIGNED :

Title
Circuit schematic

Document No.
HD-MC-
BTE8561-1
(2/3)

REV	ECO	APPROVED	DESCRIPTION	DATE



APPROVED :	
CHECKED :	
DRAWN :	
DESIGNED :	

Title	Circuit schematic
-------	-------------------

Document No.	HD-MC-BTE8561-1
	(3/3)