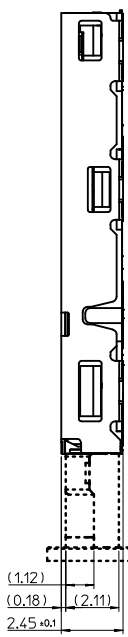
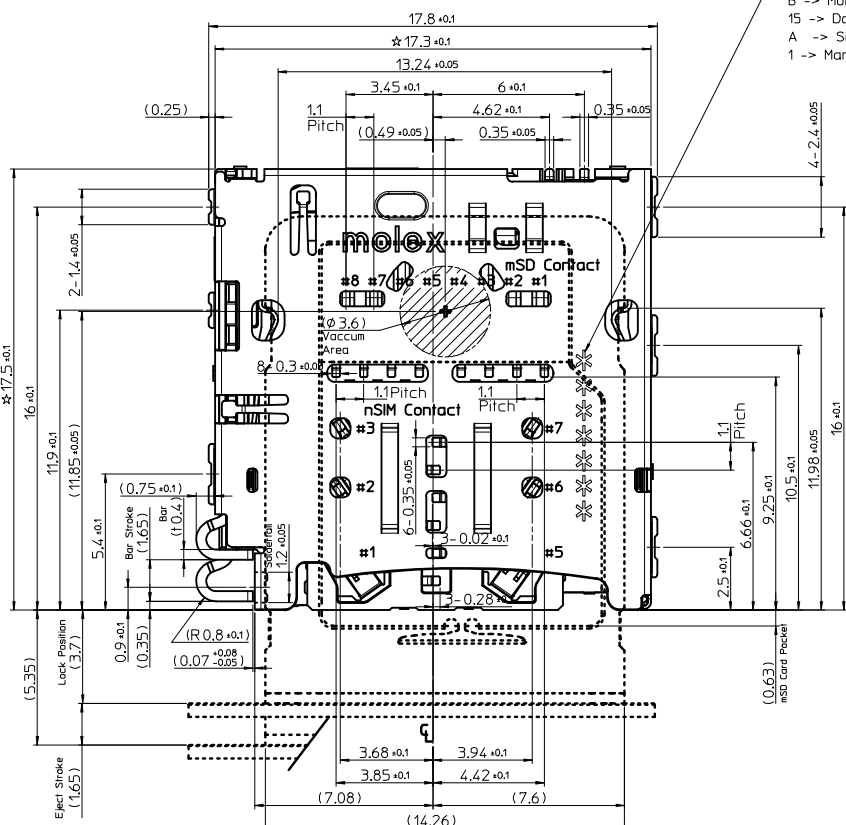


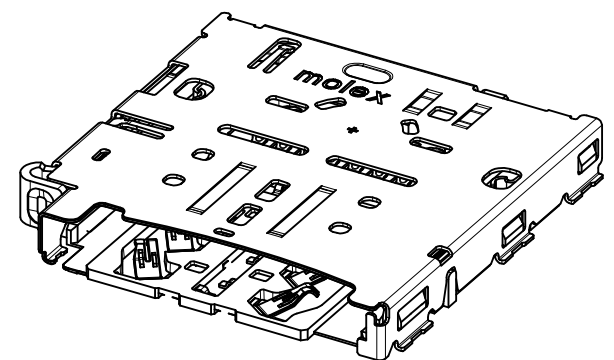
-DATE CODE-

example: **M5B15A1**

- M -> Molex initial
- 5 -> Year(2015)
- B -> Month(November) 1, ..., 9, A, B, C
- 15 -> Date(15th)
- A -> Site initial(Ansant)
- 1 -> Manufacture line number



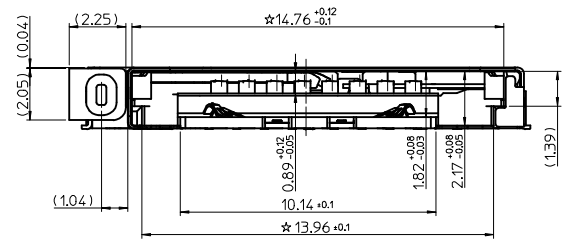
1. MATERIALS:
  - 1-1. HOUSING : HIGH TEMPERATURE THERMOPLASTIC,UL 94V-0, BLACK
  - 1-2. CONTACT & DETECT & SWITCH TER'L : COPPER ALLOY
  - 1-3. METAL SHELL & EJECT BAR & EJECT HINGE & RIGHT/LEFT LATCH : STAINLESS STEEL
2. FINISHES:
  - 2-1. CONTACT TER'L : 1.25-5.5 MICRON NICKEL UNDER-PLATED"
    - MIN. 0.05 MICRON GOLD ON CONTACT AREA,
    - MIN. 0.20 MICRON PALLADIUM-NICKEL ON mSD CONTACT AREA,
    - MIN. 0.30 MICRON PALLADIUM-NICKEL ON nSIM CONTACT AREA,
    - MIN. 0.05 MICRON GOLD ON SOLDER AREA
  - 2-2. DETECT & SWITCH TER'L : 1.25-5.5 MICRON NICKEL UNDER-PLATED"
    - MIN. 0.20 MICRON PALLADIUM-NICKEL ON CONTACT AREA,
    - MIN. 0.05 MICRON GOLD ON CONTACT AREA,
    - MIN. 0.05 MICRON GOLD ON SOLDER AREA
  - 2-3. METAL SHELL & EJECT HINGE & RIGHT/LEFT LATCH :
    - 1.25-5.5 MICRON NICKEL OVER ALL
- ★ 3. COPLANARITY OF SOLDER TAILS : 0.08mm MAX.(BEFORE & AFTER REFLOW)
4. PRODUCT SPECIFICATION : PS-104277-001
5. PACKAGING SPECIFICATION : SPK-104277-002
6. ★ IS CTF DIMENSION EQUAL TO MOLEX MAJOR QUALITY SYMBOLS



[ Circuit diagram for Detection Switch of Card Tray ]

Tray insertion condition	Tray detection switch	Circuit
Without Tray	Open	
Tray inserted	Close	

1042771421	104277-1421
<b>MATERIAL NO.</b>	<b>ORDER NO.</b>



PROPOSAL  
 EC NO: KOR2016-0090  
 DRWN: IHYOU 2016/09/24  
 CHKD:  
 APPR: YSKI M02 2016/09/28

QUALITY SYMBOLS  
 ▼ = 0  
 ▽ = 0

GENERAL TOLERANCES (UNLESS SPECIFIED)

	mm	INCH
4 PLACES	± 0.12	± 0.005
3 PLACES	± 0.15	± 0.006
2 PLACES	± 0.20	± 0.008
1 PLACE	± 0.25	± 0.010
0 PLACE	± 0.30	± 0.012

ANGULAR ± 1 °  
 DRAFT WHERE APPLICABLE  
 MUST REMAIN WITHIN DIMENSIONS

DIMENSION STYLE  
**MM ONLY**

DRAWN BY: IHYOU  
 DATE: 2016/01/21

CHECKED BY: SHCHU  
 DATE: 2016/01/21

APPROVED BY: YSKIM02  
 DATE: 2016/09/28

MATERIAL NO. SEE TABLE

SCALE: 5/1  
 DESIGN UNITS: METRIC  
 THIRD ANGLE PROJECTION

**MSD/NSIM COMBO SOCKET  
 BAR-PUSH TRAY TYPE 2.45H  
 8P/6P**

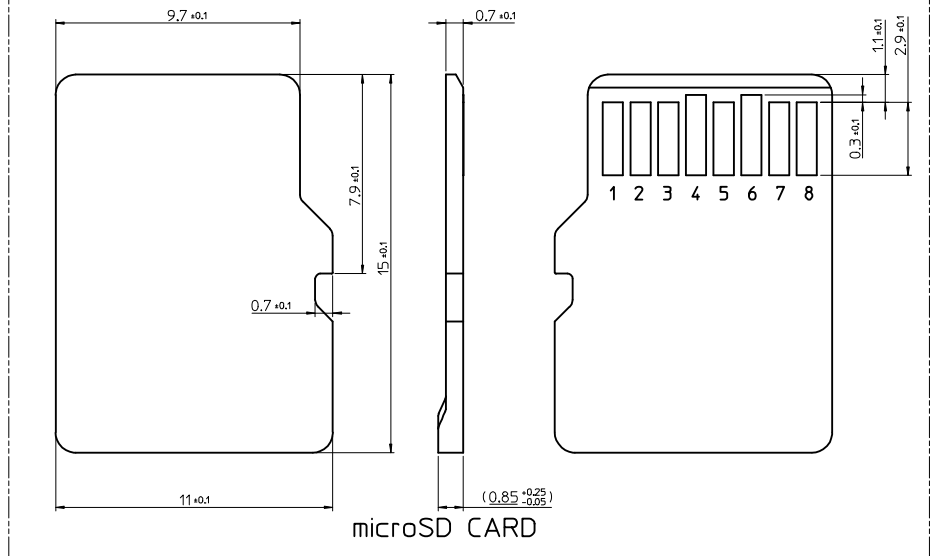
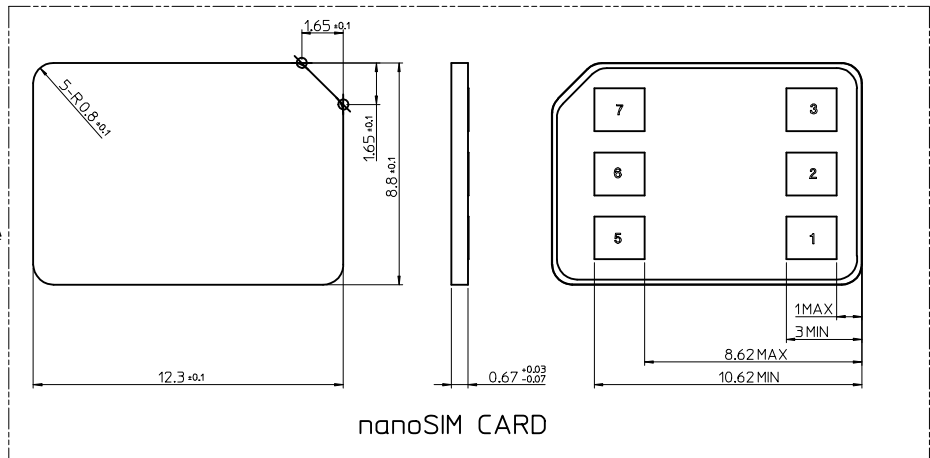
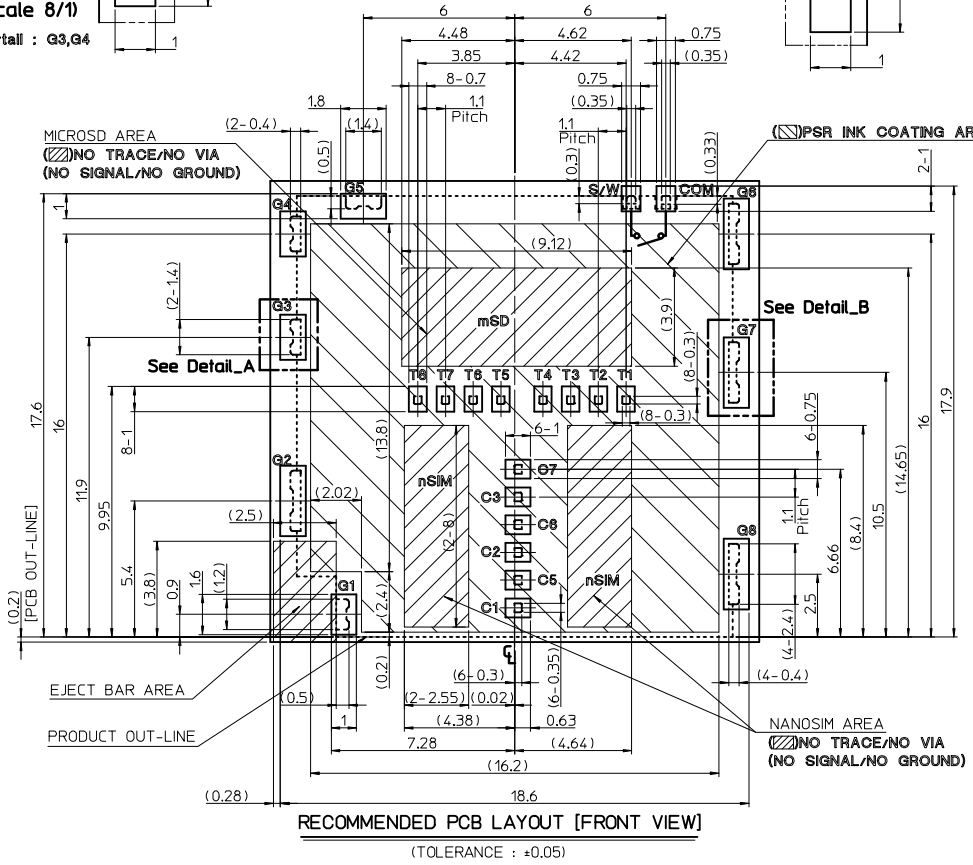
**molex**

MATERIAL NO. SD-104277-001  
 DOCUMENT NO. SD-104277-001  
 SHEET NO. 1 OF 5

THIS DRAWING CONTAINS INFORMATION THAT IS PROPRIETARY TO MOLEX INCORPORATED AND SHOULD NOT BE USED WITHOUT WRITTEN PERMISSION

**Detail\_A**  
(Scale 8/1)  
Solderfall : G3,G4

**Detail\_B**  
(Scale 8/1)  
Solderfall : G2,G6,G7,G8



\* This product has no C4, C8 Contact terminal [ nanoSIM CARD PIN-MAP ]

\*There is only one tray insertion/removal detection switch physically.

Therefore, After tray detection, This product is necessary to detect the SIM or SD Card separately in software.

PIN NO.	DESCRIPTION
C1	Vcc(Supply V)
C2	RST(Reset)
C3	CLK(Clock)
(C4)	(None)
C5	GND(Ground)
C6	Vpp(Program V)
C7	I/O
(C8)	(None)

[ microSD CARD PIN-MAP ]

PIN NO.	DESCRIPTION
T1	DAT2
T2	CD/DAT3 <sup>2</sup>
T3	COM
T4	V <sub>DD</sub>
T5	CLK
T6	V <sub>SS</sub> (GND)
T7	DAT0
T8	DAT1

G1-G8	GROUND or NOT CONNECT
S/W	TRAY DETECTOR
COM	GND or COMMON

PROPOSAL  
EC NO: KOR2016-0090  
DRWN:HYOU 2016/09/24  
CHKD:  
APPR:YSK1M02 2016/09/28

QUALITY SYMBOLS  
▽=0  
◻=0

GENERAL TOLERANCES (UNLESS SPECIFIED)

	mm	INCH
4 PLACES	± 0.12	± 0.005
3 PLACES	± 0.15	± 0.006
2 PLACES	± 0.20	± 0.008
1 PLACE	± 0.25	± 0.010
0 PLACE	± 0.30	± 0.012

ANGULAR ± 1 °

DRAFT WHERE APPLICABLE MUST REMAIN WITHIN DIMENSIONS

DIMENSION STYLE  
MM ONLY

DRAWN BY: IHYOU  
DATE: 2016/01/21

CHECKED BY: SHCHU  
DATE: 2016/01/21

APPROVED BY: YSK1M02  
DATE: 2016/09/28

MATERIAL NO.  
ENTER PART

SCALE 5/1  
DESIGN UNITS METRIC  
THIRD ANGLE PROJECTION

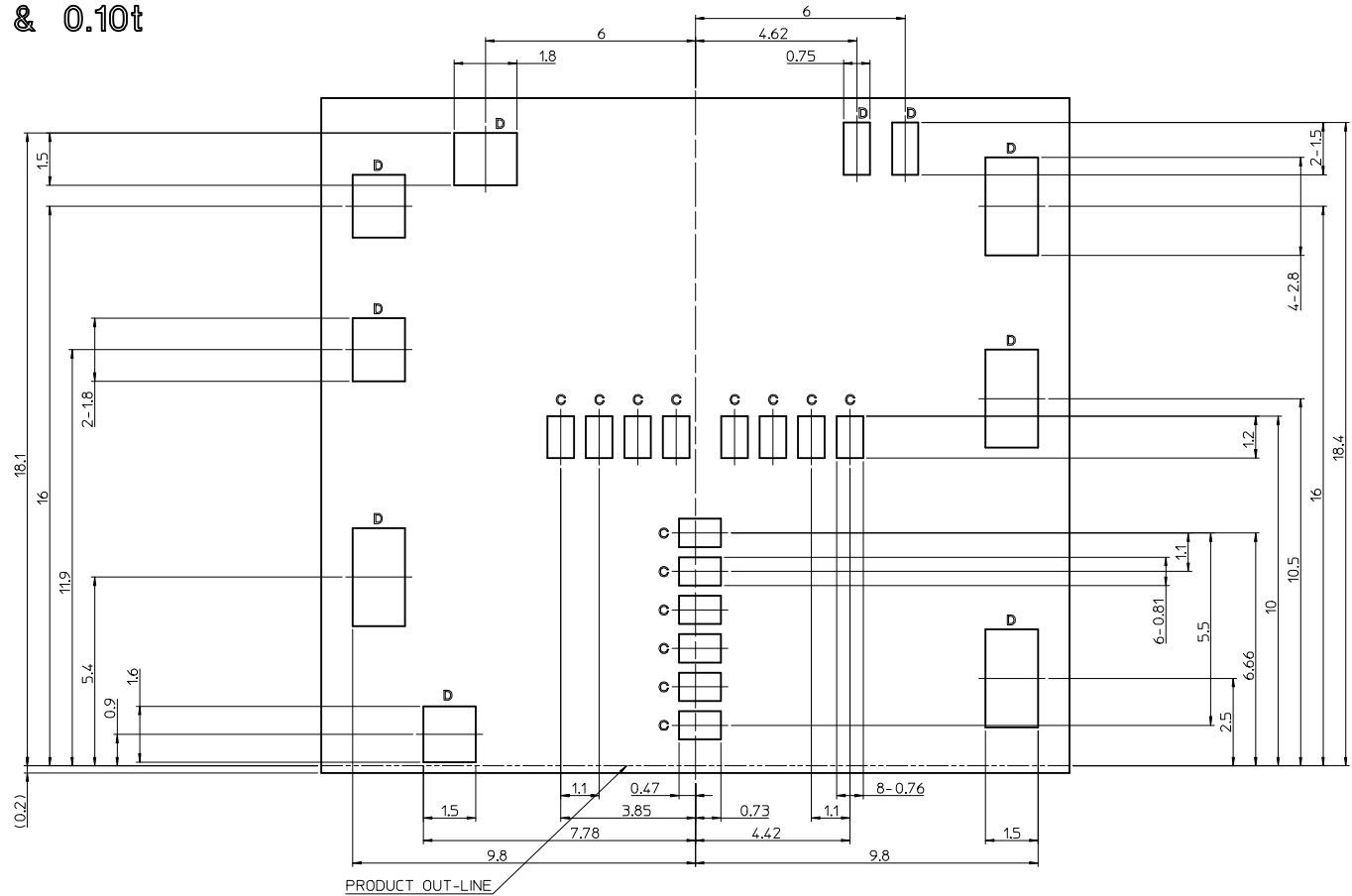
TITLE  
MSD/NSIM COMBO SOCKET  
BAR-PUSH TRAY TYPE 2.45H  
8P/6P

**molex**

DOCUMENT NO. SD-104277-001  
SHEET NO. 2 OF 5

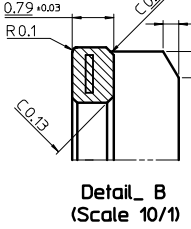
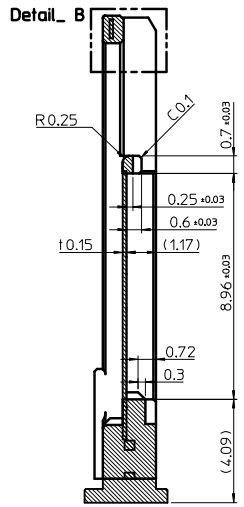
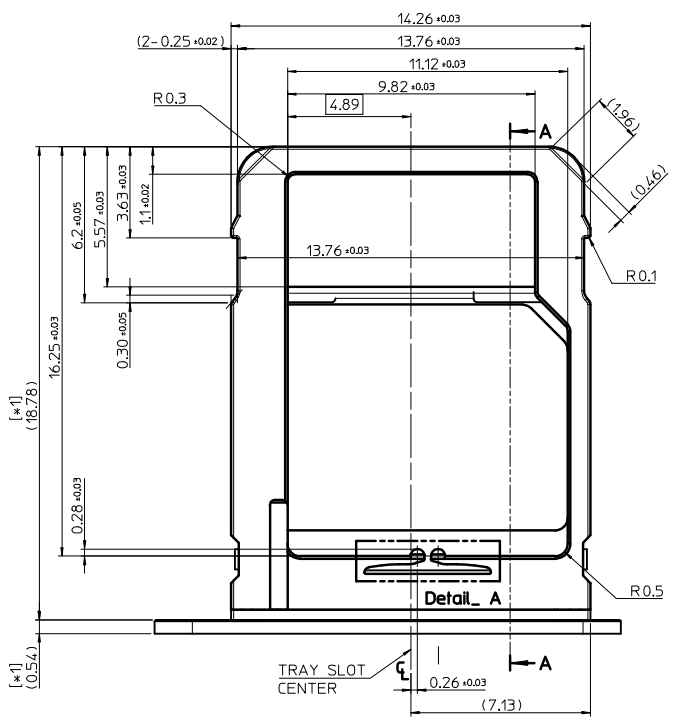
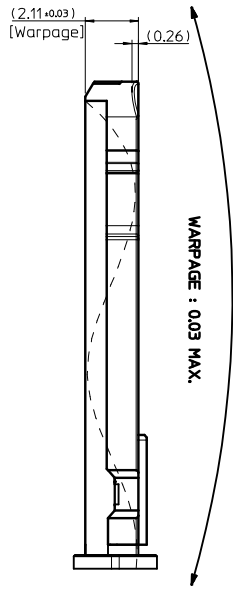
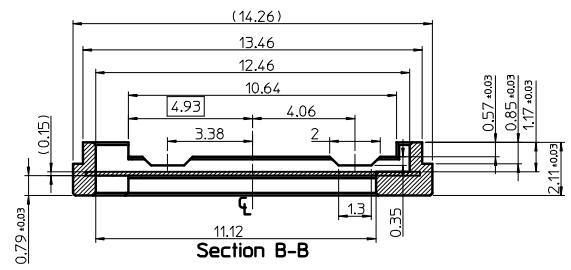
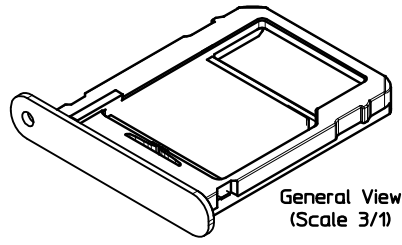
THIS DRAWING CONTAINS INFORMATION THAT IS PROPRIETARY TO MOLEX INCORPORATED AND SHOULD NOT BE USED WITHOUT WRITTEN PERMISSION

- METAL MASK(Stencil): REFERENCE DRAWING  
CONTACT 130%(C), SHELL & DETECT & SWITCH 150%(D)
- SCALE : 10/1
- SUS THICKNESS : 0.08t & 0.10t

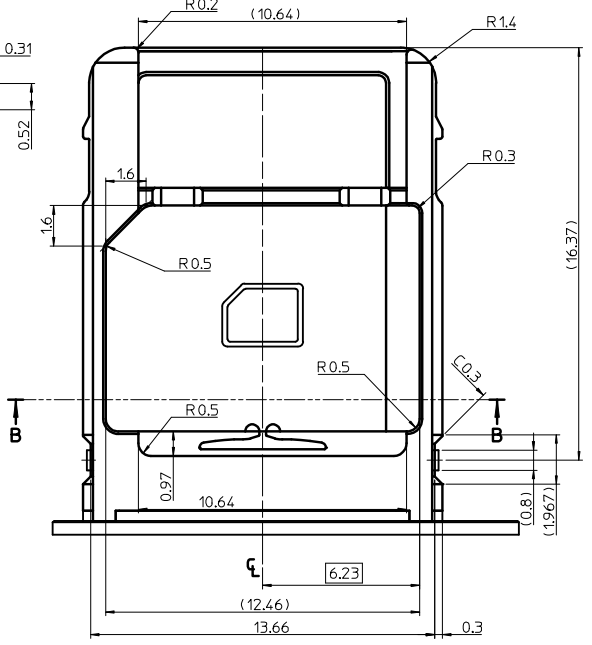


<b>PROPOSAL</b> EC NO: KOR2016-0090 DRWN: IHYOU 2016/09/24 CHKD: APPR: YSK1M02 2016/09/28	QUALITY SYMBOLS ▽=0 ◻=0	GENERAL TOLERANCES (UNLESS SPECIFIED) <table border="1"> <thead> <tr> <th></th> <th>mm</th> <th>INCH</th> </tr> </thead> <tbody> <tr> <td>4 PLACES</td> <td>± 0.12</td> <td>± 0.005</td> </tr> <tr> <td>3 PLACES</td> <td>± 0.15</td> <td>± 0.006</td> </tr> <tr> <td>2 PLACES</td> <td>± 0.20</td> <td>± 0.008</td> </tr> <tr> <td>1 PLACE</td> <td>± 0.30</td> <td>± 0.012</td> </tr> <tr> <td>0 PLACE</td> <td>± 0.40</td> <td>± 0.016</td> </tr> </tbody> </table>		mm	INCH	4 PLACES	± 0.12	± 0.005	3 PLACES	± 0.15	± 0.006	2 PLACES	± 0.20	± 0.008	1 PLACE	± 0.30	± 0.012	0 PLACE	± 0.40	± 0.016	DIMENSION STYLE <b>MM ONLY</b>	SCALE <b>7/1</b>	DESIGN UNITS <b>METRIC</b>	THIRD ANGLE PROJECTION
		mm	INCH																					
	4 PLACES	± 0.12	± 0.005																					
	3 PLACES	± 0.15	± 0.006																					
2 PLACES	± 0.20	± 0.008																						
1 PLACE	± 0.30	± 0.012																						
0 PLACE	± 0.40	± 0.016																						
DESCRIPTION <b>ENTER PART</b>	DRAWN BY IHYOU	DATE 2016/01/21	TITLE <b>MSD/NSIM COMBO SOCKET          BAR-PUSH TRAY TYPE 2.45H          8P/6P</b>																					
MATERIAL NO. <b>SD-104277-001</b>	CHECKED BY SHCHU	DATE 2016/01/21	<b>molex</b>																					
DRAFT WHERE APPLICABLE MUST REMAIN WITHIN DIMENSIONS	APPROVED BY YSK1M02	DATE 2016/09/28	DOCUMENT NO.	SHEET NO. <b>3 OF 5</b>																				

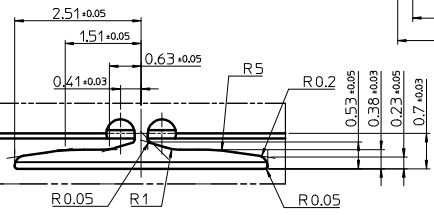
TRAY REFERENCE DRAWING



Section A-A



Detail A (Scale 10/1)



WARPAGE : 0.03 MAX.

APPLICABLE PLASTIC(Insert Molding) TRAY  
(REFERENCE ONLY)  
TOLERANCE : ±0.05  
COPLANALITY 0.05MAX  
SURFACE ROUGHNESS : Ra=0.5 μm MAX.

[\*1]CUSTOMER CAN DECIDE THIS DIMENSION.

REFERENCE ONLY  
There is a proposed drawing for concept.  
so the dimensions are subject to change without notice.  
Also, this model is tentative, and has the possibility of changing.

PROPOSAL	EC NO: KOR2016-0090	2016/09/24	2016/09/28
DRWN:HYOU	CHKD:	APPR:YSKIM02	
REV	DESCRIPTION		

QUALITY SYMBOLS	▽=0
	◻=0

GENERAL TOLERANCES (UNLESS SPECIFIED)	
mm	INCH
4 PLACES	± --- ± ---
3 PLACES	± 0.12 ± ---
2 PLACES	± 0.12 ± ---
1 PLACE	± 0.15 ± ---
0 PLACE	± 0.15 ± ---
ANGULAR ± 1 °	
DRAFT WHERE APPLICABLE MUST REMAIN WITHIN DIMENSIONS	

DIMENSION STYLE		SCALE	DESIGN UNITS	THIRD ANGLE PROJECTION
MM ONLY		5/1	METRIC	
DRAWN BY	DATE	TITLE		
IHYOU	2016/01/21	MSD/NSIM COMBO SOCKET BAR-PUSH TRAY TYPE 2.45H 8P/6P		
CHECKED BY	DATE			
SHCHU	2016/01/21			
APPROVED BY	DATE			
YSKIM02	2016/09/28			
MATERIAL NO.		DOCUMENT NO.		
ENTER PART		SD-104277-001		
SIZE	THIS DRAWING CONTAINS INFORMATION THAT IS PROPRIETARY TO MOLEX INCORPORATED AND SHOULD NOT BE USED WITHOUT WRITTEN PERMISSION			
A3				

TITLE		SHEET NO.	
MSD/NSIM COMBO SOCKET BAR-PUSH TRAY TYPE 2.45H 8P/6P		4 OF 5	
molex			
DOCUMENT NO.			
SD-104277-001			

10 9 8 7 6 5 4 3 2 1

F

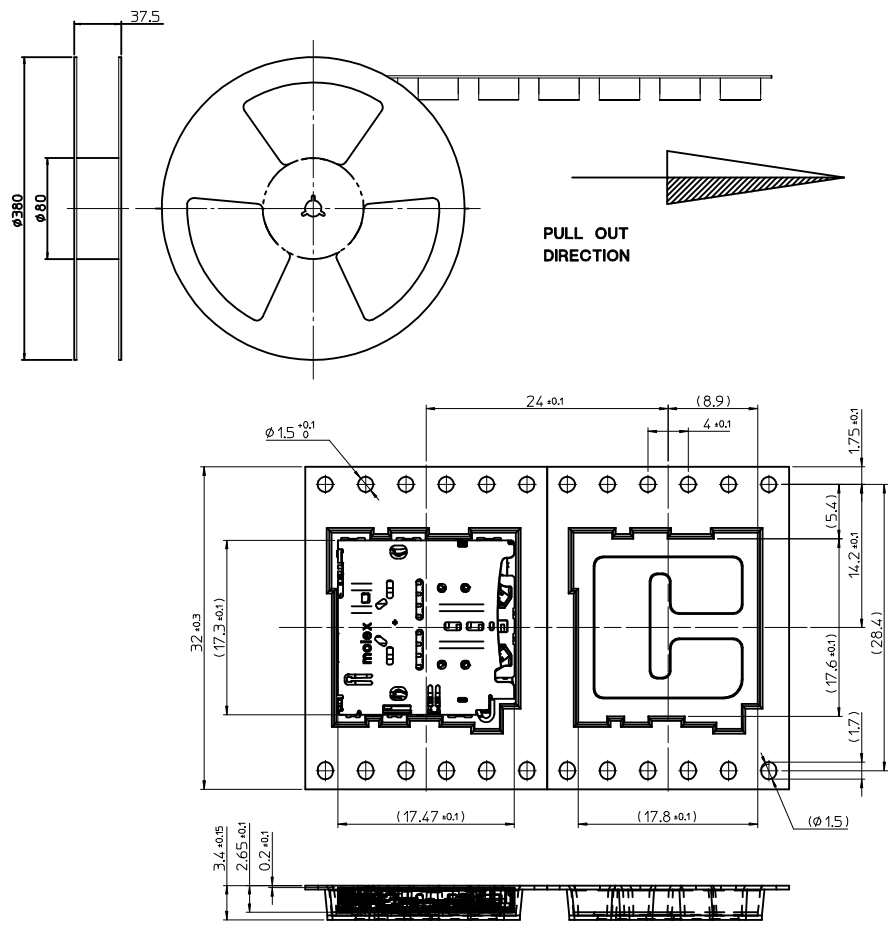
E

D

C

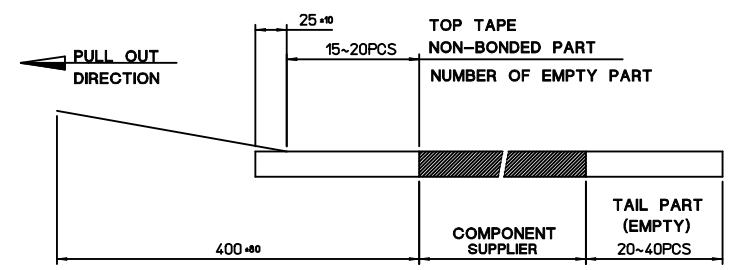
B

A

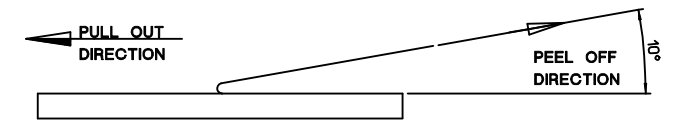


NOTES

- 1. QUANTITY OF CONNECTORS : 1,000PCS/REEL
- 2. LEAD LENGTH

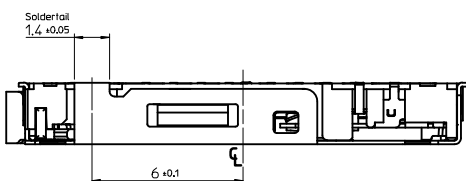


- 3. PEELING OFF FORCE OF COVER TAPE : 0.1N~0.59N(10.2GF~60GF)  
(PEELING DIRECTION AS SHOW IN FOLLOW FIG.)  
- PEELING OFF SPEED : 300mm/Min.(Ref.)



9 8 7 6 5 4 3 2 1

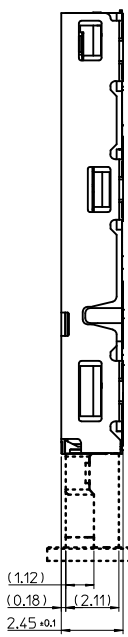
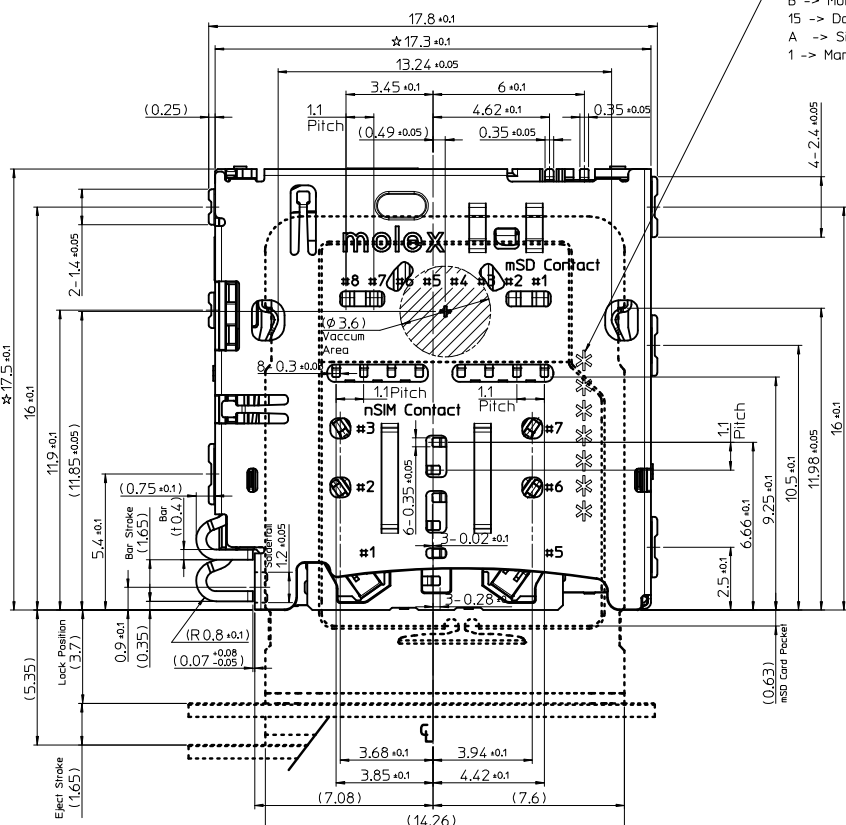
PROPOSAL EC NO: KOR2016-0090 DRWN: IHYOU 2016/09/24 CHKD: APPR: YSK1M02 2016/09/28	QUALITY SYMBOLS	GENERAL TOLERANCES (UNLESS SPECIFIED)	DIMENSION STYLE	SCALE	DESIGN UNITS	THIRD ANGLE PROJECTION																		
	$\blacktriangledown = 0$ $\triangleleft = 0$	<table border="1"> <thead> <tr> <th></th> <th>mm</th> <th>INCH</th> </tr> </thead> <tbody> <tr> <td>4 PLACES</td> <td><math>\pm</math> ---</td> <td><math>\pm</math> ---</td> </tr> <tr> <td>3 PLACES</td> <td><math>\pm</math> ---</td> <td><math>\pm</math> ---</td> </tr> <tr> <td>2 PLACES</td> <td><math>\pm</math> ---</td> <td><math>\pm</math> ---</td> </tr> <tr> <td>1 PLACE</td> <td><math>\pm</math> 0.25</td> <td><math>\pm</math> ---</td> </tr> <tr> <td>0 PLACE</td> <td><math>\pm</math> ---</td> <td><math>\pm</math> ---</td> </tr> </tbody> </table>		mm	INCH	4 PLACES	$\pm$ ---	$\pm$ ---	3 PLACES	$\pm$ ---	$\pm$ ---	2 PLACES	$\pm$ ---	$\pm$ ---	1 PLACE	$\pm$ 0.25	$\pm$ ---	0 PLACE	$\pm$ ---	$\pm$ ---	MM ONLY	2/1	METRIC	
		mm	INCH																					
	4 PLACES	$\pm$ ---	$\pm$ ---																					
3 PLACES	$\pm$ ---	$\pm$ ---																						
2 PLACES	$\pm$ ---	$\pm$ ---																						
1 PLACE	$\pm$ 0.25	$\pm$ ---																						
0 PLACE	$\pm$ ---	$\pm$ ---																						
DRAFT WHERE APPLICABLE MUST REMAIN WITHIN DIMENSIONS	DRAWN BY: IHYOU CHECKED BY: SHCHU APPROVED BY: YSK1M02 DATE: 2016/01/21 DATE: 2016/01/21 DATE: 2016/09/28	MATERIAL NO. ENTER PART	TITLE MSD/NSIM COMBO SOCKET BAR-PUSH TRAY TYPE 2.45H 8P/6P	DOCUMENT NO. SD-104277-001	SHEET NO. 5 OF 5																			
REV	DESCRIPTION	ANGULAR $\pm$ 1 °	SIZE	THIS DRAWING CONTAINS INFORMATION THAT IS PROPRIETARY TO MOLEX INCORPORATED AND SHOULD NOT BE USED WITHOUT WRITTEN PERMISSION																				



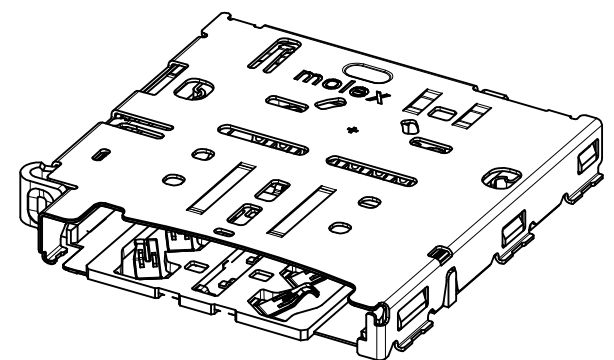
-DATE CODE-

example: **M5B15A1**

- M -> Molex initial
- 5 -> Year(2015)
- B -> Month(November) 1, ...,9, A, B, C
- 15 -> Date(15th)
- A -> Site initial(Ansant)
- 1 -> Manufacture line number



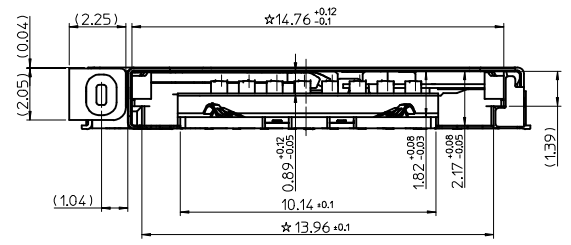
1. MATERIALS:
  - 1-1. HOUSING : HIGH TEMPERATURE THERMOPLASTIC,UL 94V-0, BLACK
  - 1-2. CONTACT & DETECT & SWITCH TER'L : COPPER ALLOY
  - 1-3. METAL SHELL & EJECT BAR & EJECT HINGE & RIGHT/LEFT LATCH : STAINLESS STEEL
2. FINISHES:
  - 2-1. CONTACT TER'L : 1.25-5.5 MICRON NICKEL UNDER-PLATED"
    - MIN. 0.05 MICRON GOLD ON CONTACT AREA,
    - MIN. 0.20 MICRON PALLADIUM-NICKEL ON mSD CONTACT AREA,
    - MIN. 0.30 MICRON PALLADIUM-NICKEL ON nSIM CONTACT AREA,
    - MIN. 0.05 MICRON GOLD ON SOLDER AREA
  - 2-2. DETECT & SWITCH TER'L : 1.25-5.5 MICRON NICKEL UNDER-PLATED"
    - MIN. 0.20 MICRON PALLADIUM-NICKEL ON CONTACT AREA,
    - MIN. 0.05 MICRON GOLD ON CONTACT AREA,
    - MIN. 0.05 MICRON GOLD ON SOLDER AREA
  - 2-3. METAL SHELL & EJECT HINGE & RIGHT/LEFT LATCH :
    - 1.25-5.5 MICRON NICKEL OVER ALL
- ★ 3. COPLANARITY OF SOLDER TAILS : 0.08mm MAX.(BEFORE & AFTER REFLOW)
4. PRODUCT SPECIFICATION : PS-104277-001
5. PACKAGING SPECIFICATION : SPK-104277-002
6. ★ IS CTF DIMENSION EQUAL TO MOLEX MAJOR QUALITY SYMBOLS



[ Circuit diagram for Detection Switch of Card Tray ]

Tray insertion condition	Tray detection switch	Circuit
Without Tray	Open	
Tray inserted	Close	

1042771421	104277-1421
<b>MATERIAL NO.</b>	<b>ORDER NO.</b>



PROPOSAL  
 EC NO: KOR2016-0090  
 DRWN: IHYOU 2016/09/24  
 CHKD:  
 APPR: YSKI M02 2016/09/28

QUALITY SYMBOLS  
 ▼=0  
 ▽=0

GENERAL TOLERANCES (UNLESS SPECIFIED)

	mm	INCH
4 PLACES	± 0.12	± 0.005
3 PLACES	± 0.15	± 0.006
2 PLACES	± 0.20	± 0.008
1 PLACE	± 0.25	± 0.010
0 PLACE	± 0.30	± 0.012

ANGULAR ± 1 °  
 DRAFT WHERE APPLICABLE  
 MUST REMAIN WITHIN DIMENSIONS

DIMENSION STYLE  
**MM ONLY**

DRAWN BY: IHYOU  
 DATE: 2016/01/21

CHECKED BY: SHCHU  
 DATE: 2016/01/21

APPROVED BY: YSKIM02  
 DATE: 2016/09/28

MATERIAL NO. SEE TABLE

SCALE: 5/1  
 DESIGN UNITS: METRIC  
 THIRD ANGLE PROJECTION

**MSD/NSIM COMBO SOCKET  
 BAR-PUSH TRAY TYPE 2.45H  
 8P/6P**

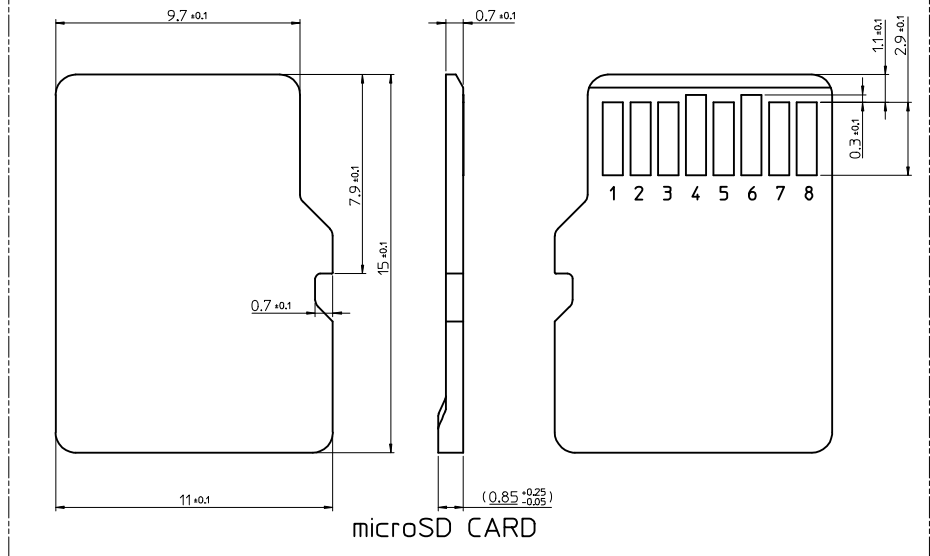
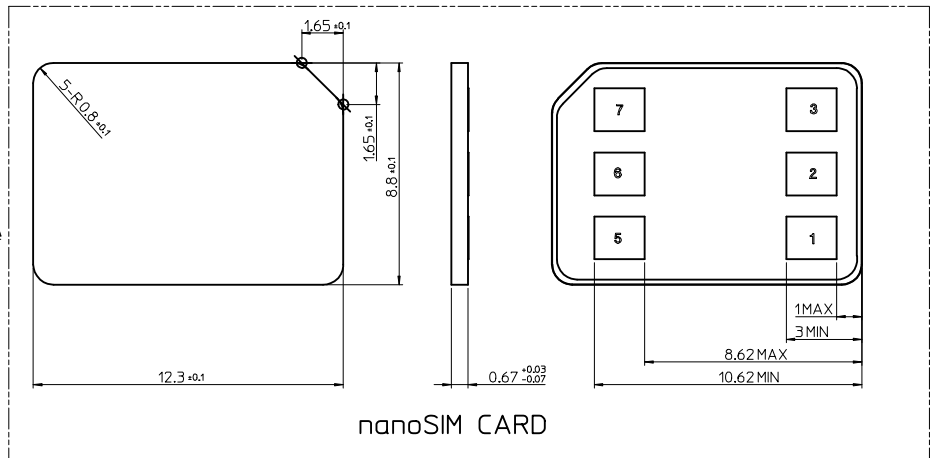
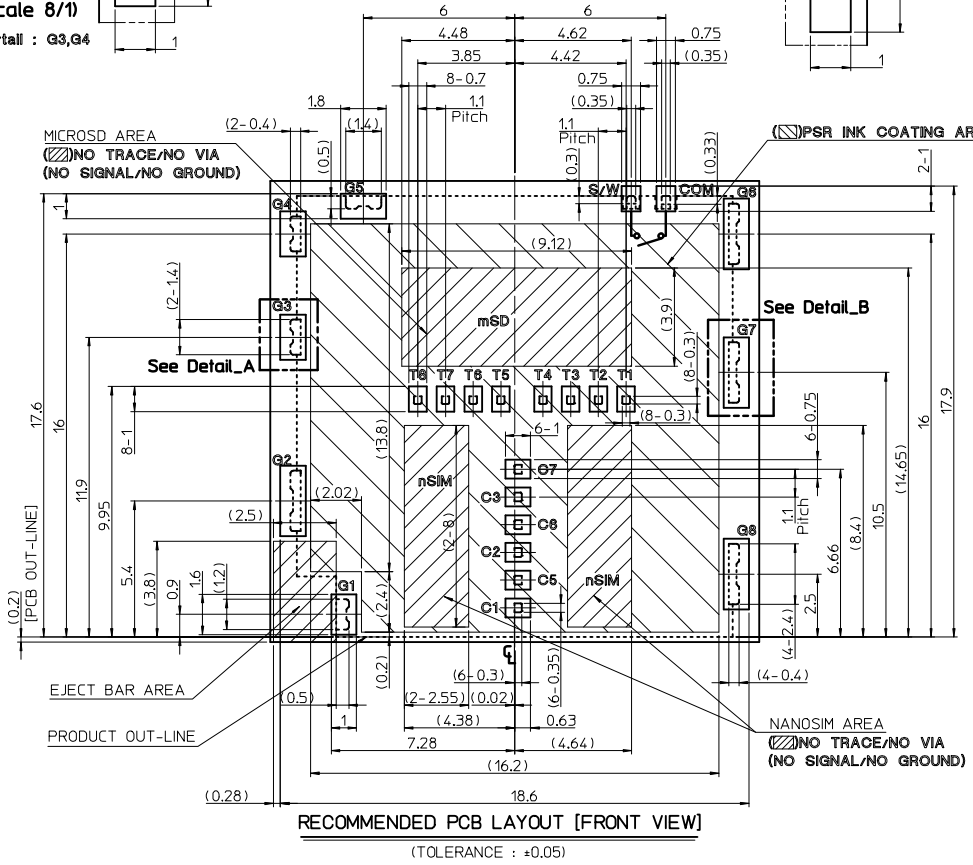
**molex**

MATERIAL NO. SD-104277-001  
 DOCUMENT NO. SD-104277-001  
 SHEET NO. 1 OF 5

THIS DRAWING CONTAINS INFORMATION THAT IS PROPRIETARY TO MOLEX INCORPORATED AND SHOULD NOT BE USED WITHOUT WRITTEN PERMISSION

**Detail\_A**  
(Scale 8/1)  
Solderfall : G3,G4

**Detail\_B**  
(Scale 8/1)  
Solderfall : G2,G6,G7,G8



\* This product has no C4, C8 Contact terminal [ nanoSIM CARD PIN-MAP ]

\* There is only one tray insertion/removal detection switch physically.

Therefore, After tray detection, This product is necessary to detect the SIM or SD Card separately in software.

PIN NO.	DESCRIPTION
C1	Vcc(Supply V)
C2	RST(Reset)
C3	CLK(Clock)
(C4)	(None)
C5	GND(Ground)
C6	Vpp(Program V)
C7	I/O
(C8)	(None)

[ microSD CARD PIN-MAP ]

PIN NO.	DESCRIPTION
T1	DAT2
T2	CD/DAT3 <sup>2</sup>
T3	CMD
T4	V <sub>DD</sub>
T5	CLK
T6	V <sub>SS</sub> (GND)
T7	DAT0
T8	DAT1

G1-G8	GROUND or NOT CONNECT
S/W	TRAY DETECTOR
COM	GND or COMMON

PROPOSAL  
EC NO: KOR2016-0090  
DRWN:HYOU 2016/09/24  
CHKD:  
APPR:YSK1M02 2016/09/28

QUALITY SYMBOLS  
▽=0  
◻=0

GENERAL TOLERANCES (UNLESS SPECIFIED)

	mm	INCH
4 PLACES	± 0.12	± 0.005
3 PLACES	± 0.15	± 0.006
2 PLACES	± 0.20	± 0.008
1 PLACE	± 0.25	± 0.010
0 PLACE	± 0.30	± 0.012

ANGULAR ± 1 °

DRAFT WHERE APPLICABLE MUST REMAIN WITHIN DIMENSIONS

DIMENSION STYLE: MM ONLY

SCALE: 5/1

DESIGN UNITS: METRIC

THIRD ANGLE PROJECTION

DRAWN BY: IHYOU DATE: 2016/01/21

CHECKED BY: SHCHU DATE: 2016/01/21

APPROVED BY: YSK1M02 DATE: 2016/09/28

MATERIAL NO. ENTER PART

SIZE: A3

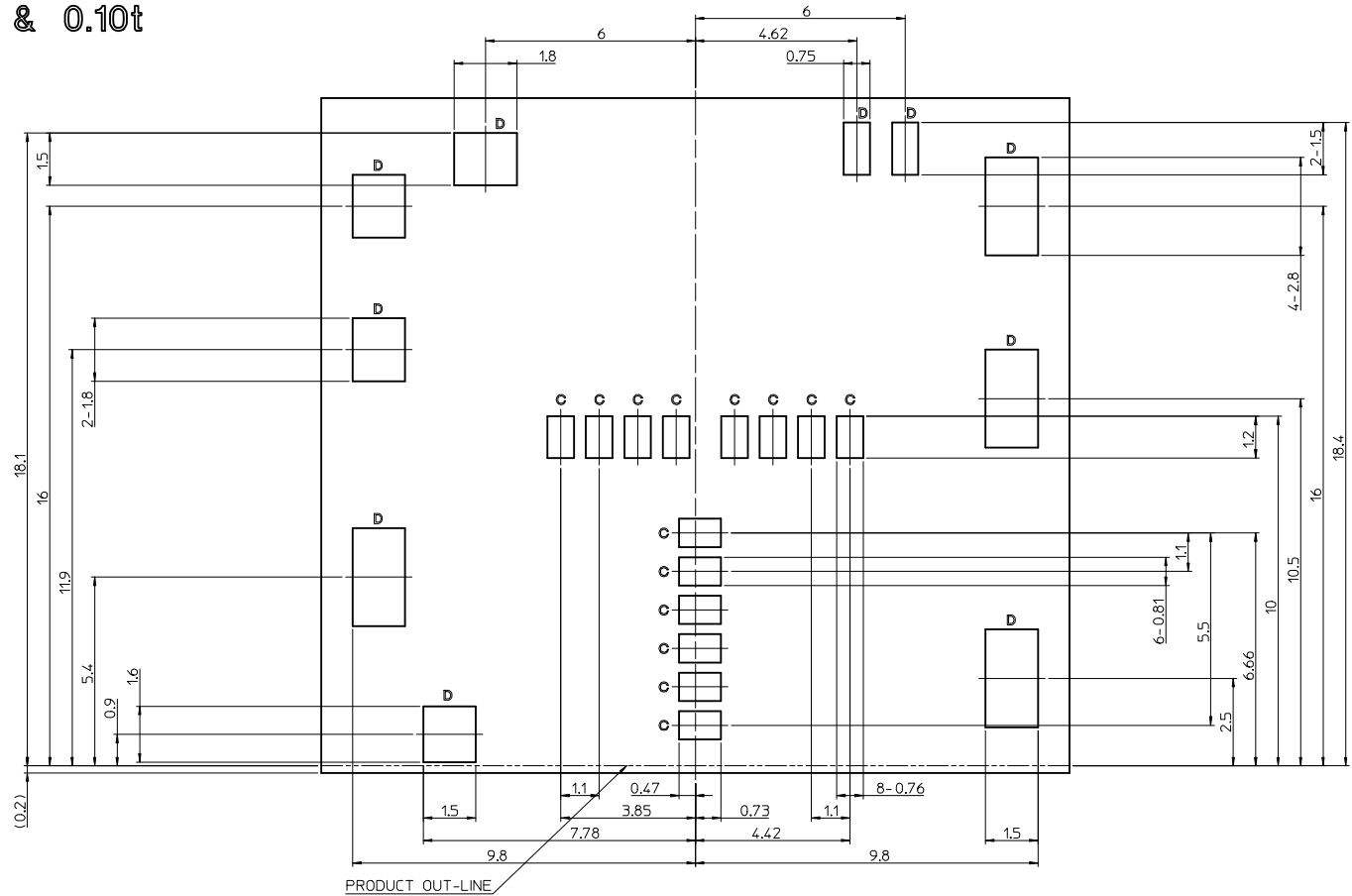
TITLE: MSD/NSIM COMBO SOCKET BAR-PUSH TRAY TYPE 2.45H 8P/6P

**molex**

DOCUMENT NO. SD-104277-001 SHEET NO. 2 OF 5

THIS DRAWING CONTAINS INFORMATION THAT IS PROPRIETARY TO MOLEX INCORPORATED AND SHOULD NOT BE USED WITHOUT WRITTEN PERMISSION

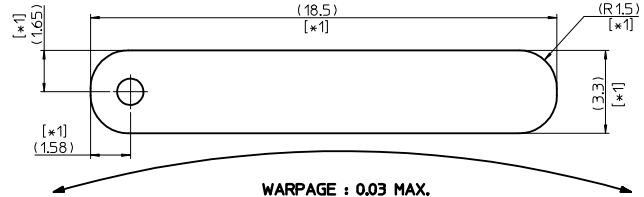
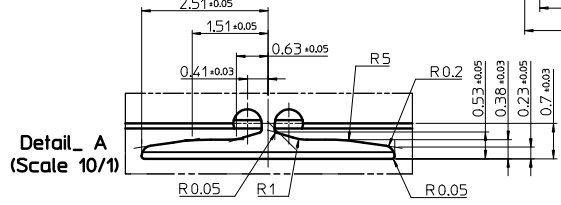
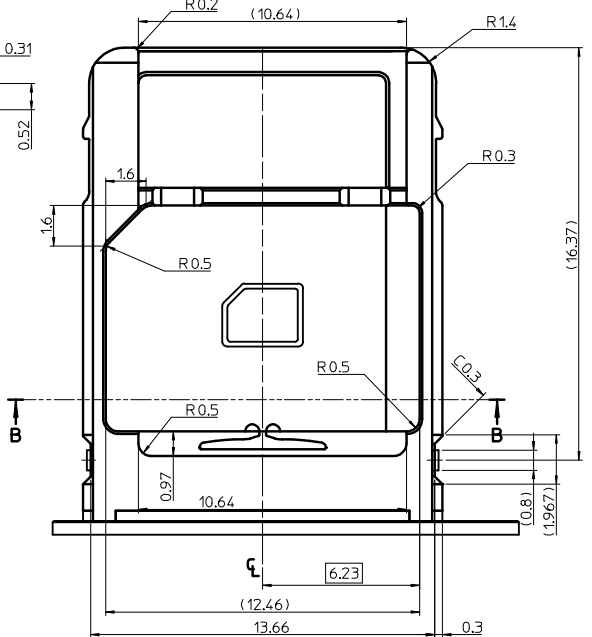
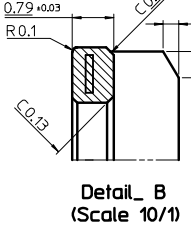
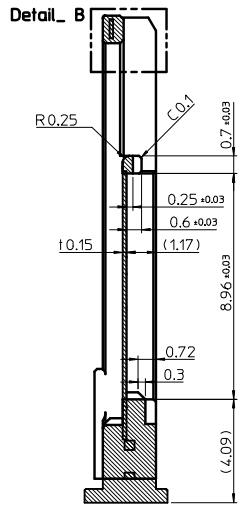
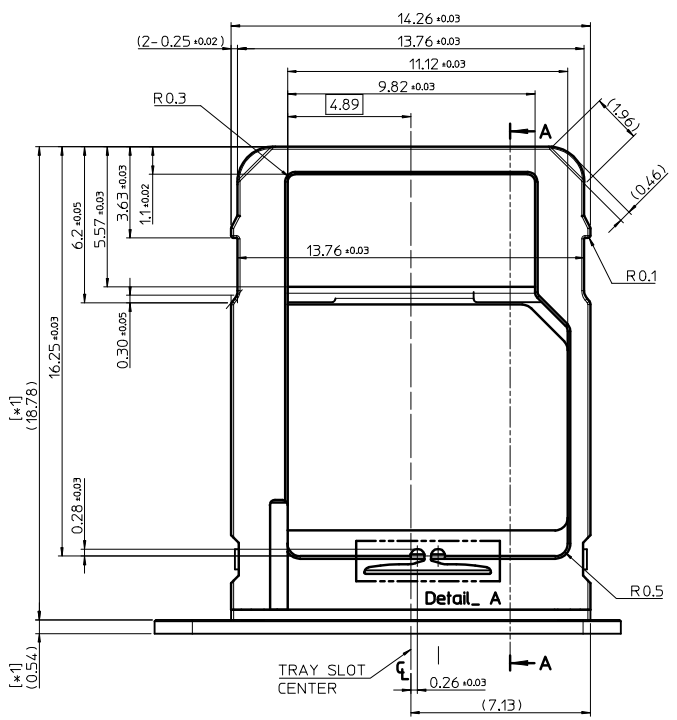
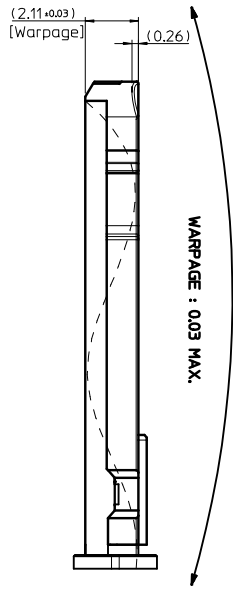
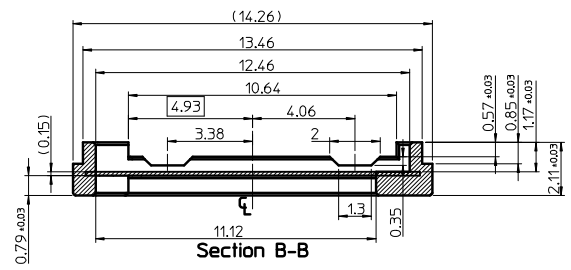
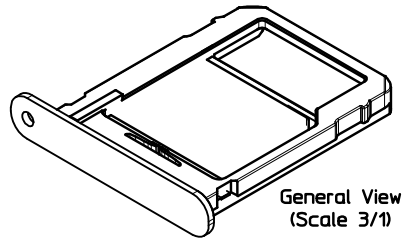
- METAL MASK(Stencil): REFERENCE DRAWING CONTACT 130%(C), SHELL & DETECT & SWITCH 150%(D)
- SCALE : 10/1
- SUS THICKNESS : 0.08t & 0.10t



<b>PROPOSAL</b> EC NO: KOR2016-0090 DRWN: IHYOU 2016/09/24 CHKD: APPR: YSK1M02 2016/09/28	DESCRIPTION REV	<b>QUALITY SYMBOLS</b> ▽=0 ◻=0	<b>GENERAL TOLERANCES (UNLESS SPECIFIED)</b>	<b>DIMENSION STYLE</b> MM ONLY	SCALE 7/1	DESIGN UNITS METRIC	THIRD ANGLE PROJECTION																		
		<table border="1"> <thead> <tr> <th></th> <th>mm</th> <th>INCH</th> </tr> </thead> <tbody> <tr> <td>4 PLACES</td> <td>± ---</td> <td>± ---</td> </tr> <tr> <td>3 PLACES</td> <td>± 0.12</td> <td>± ---</td> </tr> <tr> <td>2 PLACES</td> <td>± 0.12</td> <td>± ---</td> </tr> <tr> <td>1 PLACE</td> <td>± 0.15</td> <td>± ---</td> </tr> <tr> <td>0 PLACE</td> <td>± 0.15</td> <td>± ---</td> </tr> </tbody> </table>		mm	INCH	4 PLACES	± ---	± ---	3 PLACES	± 0.12	± ---	2 PLACES	± 0.12	± ---	1 PLACE	± 0.15	± ---	0 PLACE	± 0.15	± ---	DRAWN BY IHYOU	DATE 2016/01/21	TITLE <b>MSD/NSIM COMBO SOCKET BAR-PUSH TRAY TYPE 2.45H 8P/6P</b>		
			mm	INCH																					
		4 PLACES	± ---	± ---																					
		3 PLACES	± 0.12	± ---																					
2 PLACES	± 0.12	± ---																							
1 PLACE	± 0.15	± ---																							
0 PLACE	± 0.15	± ---																							
DRAFT WHERE APPLICABLE MUST REMAIN WITHIN DIMENSIONS	CHECKED BY SHCHU	DATE 2016/01/21	<b>molex</b>																						
	APPROVED BY YSK1M02	DATE 2016/09/28	MATERIAL NO. <b>ENTER PART</b>	DOCUMENT NO. <b>SD-104277-001</b>	SHEET NO. <b>3 OF 5</b>																				
			SIZE <b>A3</b>	THIS DRAWING CONTAINS INFORMATION THAT IS PROPRIETARY TO MOLEX INCORPORATED AND SHOULD NOT BE USED WITHOUT WRITTEN PERMISSION																					



TRAY REFERENCE DRAWING



APPLICABLE PLASTIC(Insert Molding) TRAY  
(REFERENCE ONLY)  
TOLERANCE : ±0.05  
COPLANALITY 0.05MAX  
SURFACE ROUGHNESS : Ra=0.5 μm MAX.

[\*1]CUSTOMER CAN DECIDE THIS DIMENSION.

REFERENCE ONLY  
There is a proposed drawing for concept.  
so the dimensions are subject to change without notice.  
Also, this model is tentative, and has the possibility of changing.

PROPOSAL	EC NO: KOR2016-0090	2016/09/24
DRWN:HYOU	CHKD:	APPR:YSK1M02
DESCRIPTION		2016/09/28
REV		

QUALITY SYMBOLS	▽=0
	◻=0

GENERAL TOLERANCES (UNLESS SPECIFIED)	mm	INCH
4 PLACES	± 0.12	± 0.005
3 PLACES	± 0.15	± 0.006
2 PLACES	± 0.20	± 0.008
1 PLACE	± 0.30	± 0.012
0 PLACE	± 0.40	± 0.016
ANGULAR ± 1 °		
DRAFT WHERE APPLICABLE MUST REMAIN WITHIN DIMENSIONS		

DIMENSION STYLE		SCALE	DESIGN UNITS	THIRD ANGLE PROJECTION
MM ONLY		5/1	METRIC	☉
DRAWN BY	DATE	TITLE		
IHYOU	2016/01/21	MSD/NSIM COMBO SOCKET BAR-PUSH TRAY TYPE 2.45H 8P/6P		
CHECKED BY	DATE	molex		
SHCHU	2016/01/21			
APPROVED BY	DATE	DOCUMENT NO.		
YSK1M02	2016/09/28	SD-104277-001		
MATERIAL NO.		SHEET NO.		
ENTER PART		4 OF 5		
SIZE	THIS DRAWING CONTAINS INFORMATION THAT IS PROPRIETARY TO MOLEX INCORPORATED AND SHOULD NOT BE USED WITHOUT WRITTEN PERMISSION			
A3				

10 9 8 7 6 5 4 3 2 1

F

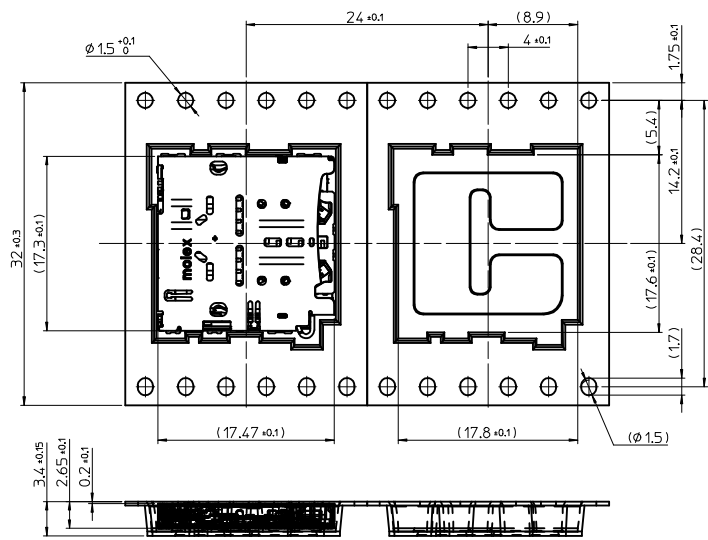
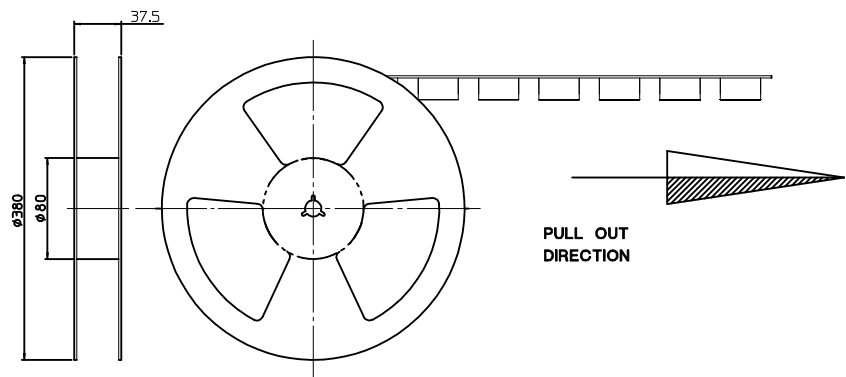
E

D

C

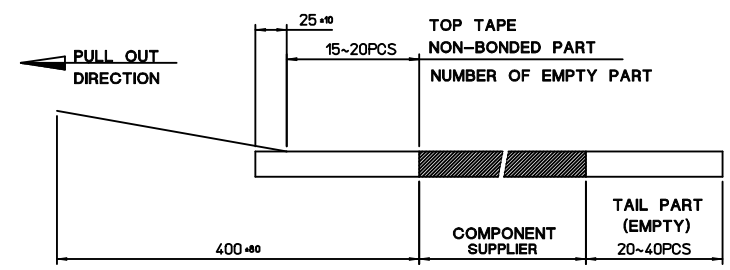
B

A

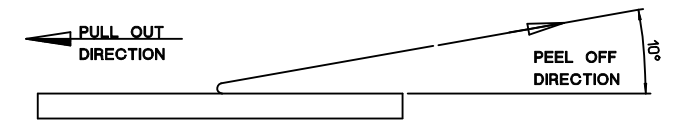


**NOTES**

- 1. QUANTITY OF CONNECTORS : 1,000PCS/REEL
- 2. LEAD LENGTH



- 3. PEELING OFF FORCE OF COVER TAPE : 0.1N~0.59N(10.2GF~60GF)  
(PEELING DIRECTION AS SHOW IN FOLLOW FIG.)
- PEELING OFF SPEED : 300mm/Min.(Ref.)



<b>PROPOSAL</b> EC NO: KOR2016-0090 DRWN: IHYOU 2016/09/24 CHKD: APPR: YSK1M02 2016/09/28	QUALITY SYMBOLS ▽=0 ◻=0	GENERAL TOLERANCES (UNLESS SPECIFIED) <table border="1"> <thead> <tr> <th></th> <th>mm</th> <th>INCH</th> </tr> </thead> <tbody> <tr> <td>4 PLACES</td> <td>± ---</td> <td>± ---</td> </tr> <tr> <td>3 PLACES</td> <td>± ---</td> <td>± ---</td> </tr> <tr> <td>2 PLACES</td> <td>± ---</td> <td>± ---</td> </tr> <tr> <td>1 PLACE</td> <td>± 0.25</td> <td>± ---</td> </tr> <tr> <td>0 PLACE</td> <td>± ---</td> <td>± ---</td> </tr> </tbody> </table>		mm	INCH	4 PLACES	± ---	± ---	3 PLACES	± ---	± ---	2 PLACES	± ---	± ---	1 PLACE	± 0.25	± ---	0 PLACE	± ---	± ---	DIMENSION STYLE <b>MM ONLY</b>	SCALE <b>2/1</b>	DESIGN UNITS <b>METRIC</b>	THIRD ANGLE PROJECTION
		mm	INCH																					
	4 PLACES	± ---	± ---																					
	3 PLACES	± ---	± ---																					
2 PLACES	± ---	± ---																						
1 PLACE	± 0.25	± ---																						
0 PLACE	± ---	± ---																						
REV O	DESCRIPTION DRAFT WHERE APPLICABLE MUST REMAIN WITHIN DIMENSIONS	ANGULAR ± 1 °	DRAWN BY IHYOU	DATE 2016/01/21	TITLE <b>MSD/NSIM COMBO SOCKET BAR-PUSH TRAY TYPE 2.45H 8P/6P</b>																			
			CHECKED BY SHCHU	DATE 2016/01/21																				
			APPROVED BY YSK1M02	DATE 2016/09/28	MATERIAL NO. <b>ENTER PART</b>	DOCUMENT NO. <b>SD-104277-001</b>																		

9 8 7 6 5 4 3 2 1

F

E

D

C

B

A

THIS DRAWING CONTAINS INFORMATION THAT IS PROPRIETARY TO MOLEX INCORPORATED AND SHOULD NOT BE USED WITHOUT WRITTEN PERMISSION