

5

4

3

2

1

D

C

B

A

D

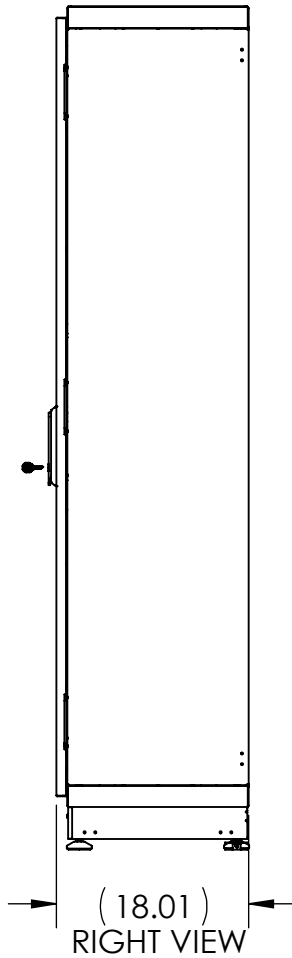
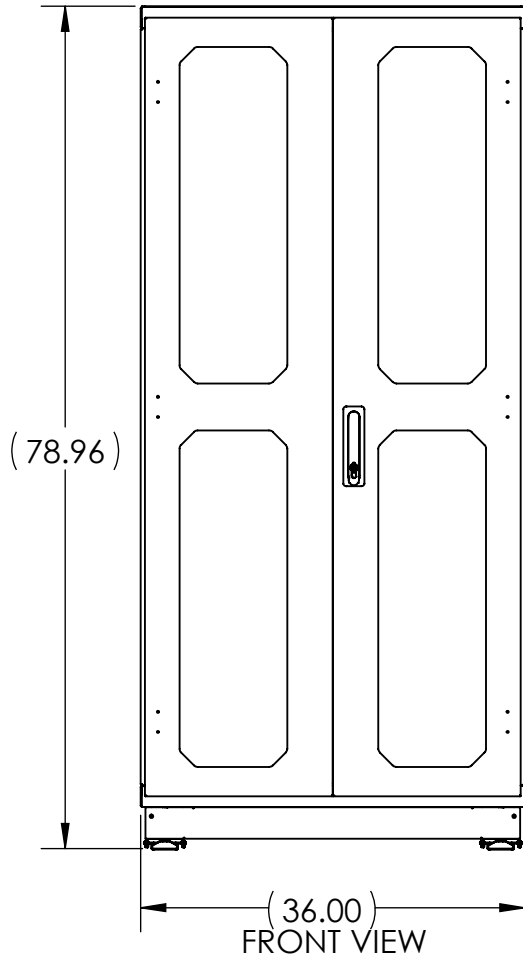
C

B

A

NOTE:

1. MATERIALS: 16GA CRS.
2. FINISH: POWDER COAT, GLOSS BLACK.
3. CABINET DIMENSIONS: 36" WIDE X 79" TALL X 18" DEEP.
4. CABINET WEIGHT IS APPROXIMATELY 270lbs (NO ACCESSORIES).
5. REMOVABLE HINGED DOORS. OPEN 0° TO 120°.
6. RIGHT DOOR IS KEYED LOCK WITH ROTATING HANDLE.
7. CLEAR POLYCARBONATE DOOR PANELS.
8. MAXIMUM LOADING IS 500lbs.
9. PROVIDES ESD PROTECTION ON CABINET TOP.
10. ESD CONNECTION PROVIDED BY REAR LEG LEVELERS TO CONDUCTIVE FLOOR. IF CONDUCTIVE FLOOR IS NOT DEFINED A SEPARATE GROUND WIRE IS PROVIDED TO CONNECT TO EQUIPMENT COMMON GROUND.
11. INTERNAL ACCESSORIES (INCLUDED) PROVIDE ESD PROTECTION. CABINET PROVIDES 17 HORIZONTAL LOCATIONS TO INSTALL COMBINATIONS OF THE FOLLOWING:
 1. ESDC-7836-1200 (ESD CABINET DRAWER ASSEMBLY). POSITIONS 1-8 ONLY. MAX LOAD IS 50lbs. (QTY: 2)
 2. ESDC-7836-1205 (ESD DRAWER DIVIDER). USE IN SLIDING DRAWER. (QTY: 3 PER DRAWER)
 3. ESDC-7836-1201 (ESD CABINET PEGBOARD, FULL SIZE). ANY POSITION OR LOCATION. (QTY: 1)
 4. ESDC-7836-1202 (ESD CABINET PEGBOARD, 2/3 SIZE). ANY POSITION OR LOCATION. (QTY: NA)
 5. ESDC-7836-1202 (ESD CABINET PEGBOARD, 1/3 SIZE). ANY POSITION OR LOCATION. (QTY: NA)
 6. ESDC-7836-1204 (ESD CABINET FULL SHELF). ANY POSITION OR LOCATION. MAX LOAD IS 50lbs. (MAX QTY:2)
 7. ANY SIZE CONDUCTIVE LOUVER MOUNTED BIN. ANY POSITION OR LOCATION. (MAX QTY: DEFINED BY USER)
12. ANCHOR KIT PROVIDES MOUNTING TO THE FLOOR OR THE WALL.



KENDALL HOWARD CONFIDENTIAL
 THE INFORMATION CONTAINED IN THIS DRAWING IS THE SOLE PROPERTY OF KENDALL HOWARD. ANY REPRODUCTION IN PART OR AS A WHOLE WITHOUT THE WRITTEN PERMISSION OF KENDALL HOWARD IS STRICTLY PROHIBITED.

MANUFACTURING COMMENTS:

UNLESS OTHERWISE SPECIFIED, ALL DIMENSIONS ARE IN INCHES.

TOLERANCES:
 FRACTIONAL: ±1/8
 ANGULAR: ±1°
 TWO PLACE DECIMAL: ±.03
 THREE PLACE DECIMAL: ±.010
 HOLE: ±.005

MATERIAL: NA
 SURFACE AREA (in²): NA
 FINISH ID: NA
 FINISH DESCRIPTION: NA

DO NOT SCALE DRAWING

APPROVAL

DATE

DRAWN	BS	03/19/2021
DESIGN	BS	03/19/2021
ENG APPR		
MFG APPR		

LEGACY Part Number:

CLASSIFICATION:

ESD Cabinets



INTERPRET DIMENSIONS AND TOLERANCES PER
 ASME Y14.5-2009

KENDALL HOWARD

TITLE:
PRODUCT DATA- 78" ESD CABINET with INTERNAL ACCESSORIES

SIZE	DWG. NO.	REV
A	ESDC-7836-2000	A
Product Data		

SCALE: 1:32 WEIGHT (lbs): 341.33 SHEET 1 OF 2

N/A	Initial Release	BS	03/19/2021	-
ECO No:	Description:	By:	Date:	App By:

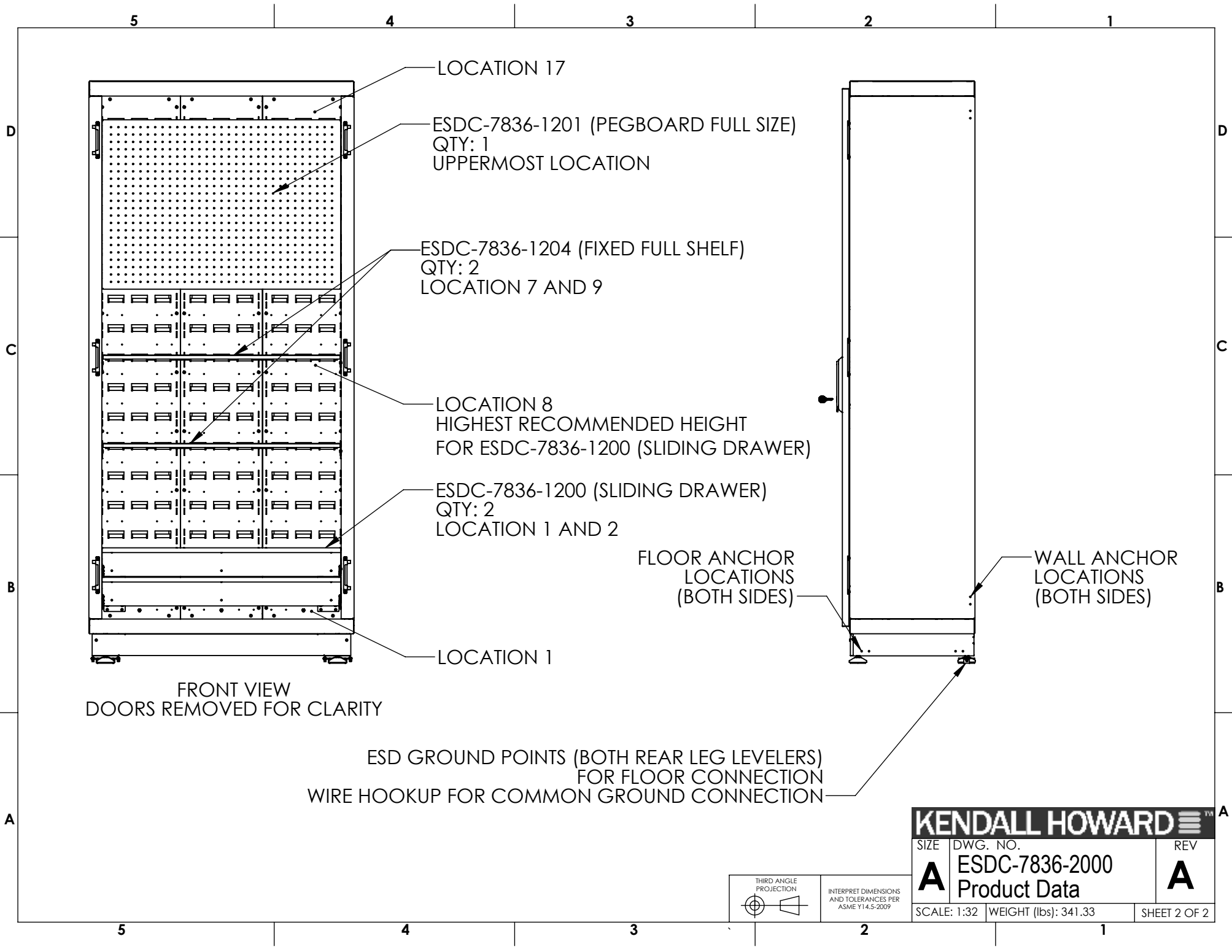
5

4

3

2

1



KENDALL HOWARD

SIZE	DWG. NO.	REV
A	ESDC-7836-2000	A
Product Data		

SCALE: 1:32 WEIGHT (lbs): 341.33 SHEET 2 OF 2

