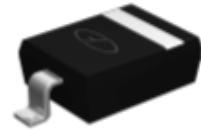


## Features

- Ultra-Small Surface Mount Package
- Epoxy Meets UL 94 V-0 Flammability Rating
- Moisture Sensitivity Level 1
- Ideal for Automated Assembly



Package: SOD-323

## Maximum Ratings (T<sub>A</sub>=25°C unless otherwise specified)

Symbol	Rating	Unit
V <sub>F</sub> @ I <sub>F</sub> =10mA	0.9	V
PD	250	mW
R <sub>θJA</sub> (Junction to Ambient)	500	°C/W
T <sub>J</sub> ,T <sub>STG</sub>	-65 to +150	°C



**RoHS**  
COMPLIANT

## Electrical Characteristics (T<sub>A</sub>=25°C unless otherwise specified)

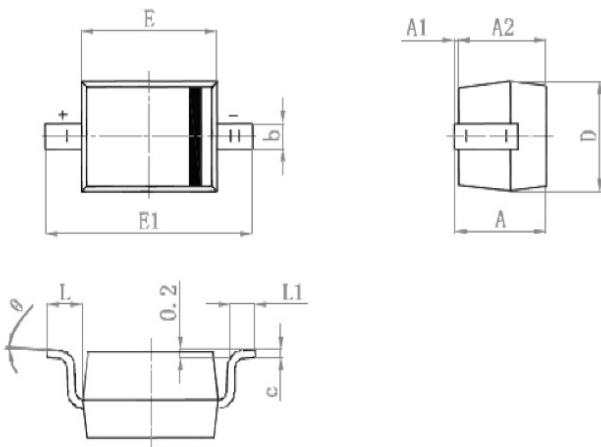
MPN	Zener Voltage V <sub>Z</sub> @ I <sub>ZT</sub>			Test Current I <sub>ZT</sub>	Maximum Zener Impedance Z <sub>ZT</sub> @ I <sub>ZT</sub>	Maximum Reverse Current I <sub>R</sub> @ V <sub>R</sub>		Maximum Temperature Coefficient ΘV <sub>Z</sub>
	Min	Nom	Max			I <sub>R</sub> @ V <sub>R</sub>	V	
	V	V	V	mA	Ω	μA	V	%/°C
GSZ1L8S	1.710	1.8	1.890	0.500	1200	25	1.0	-0.085
GSZ2L0S	1.900	2.0	2.100	0.500	1100	25	1.0	-0.080
GSZ2L2S	2.090	2.2	2.310	0.500	1000	25	1.0	-0.065
GSZ2L4S	2.280	2.4	2.520	0.500	900	25	1.0	-0.060
GSZ2L5S	2.375	2.5	2.625	0.500	900	10	1.0	-0.060
GSZ2L7S	2.565	2.7	2.835	0.500	900	10	1.0	±0.055
GSZ2L8S	2.660	2.8	2.940	0.500	900	10	1.0	±0.055
GSZ3L0S	2.850	3.0	3.150	0.500	900	5.0	1.0	±0.055
GSZ3L3S	3.135	3.3	3.465	0.500	900	5.0	1.0	±0.055
GSZ3L6S	3.420	3.6	3.780	0.500	900	5.0	1.0	±0.030
GSZ3L9S	3.705	3.9	4.095	0.500	900	5.0	1.0	±0.030
GSZ4L3S	4.085	4.3	4.515	0.500	900	5.0	1.0	±0.030
GSZ4L7S	4.465	4.7	4.935	0.500	750	1.0	1.5	±0.030
GSZ5L1S	4.845	5.1	5.355	0.500	400	1.0	1.5	±0.030
GSZ5L6S	5.320	5.6	5.880	0.500	325	1.0	2.0	0.038
GSZ6L2S	5.890	6.2	6.510	0.500	90	1.0	2.0	0.045

**Electrical Characteristics** (T<sub>A</sub>=25°C unless otherwise specified)

MPN	Zener Voltage V <sub>Z</sub> @ I <sub>ZT</sub>			Test Current	Maximum Zener Impedance	Maximum Reverse Current		Maximum Temperature Coefficient
	Min	Nom	Max			I <sub>ZT</sub>	Z <sub>ZT</sub> @ I <sub>ZT</sub>	
	V	V	V	mA	Ω	μA	V	%/°C
GSZ6L8S	6.460	6.8	7.140	0.500	60	1.0	3.5	0.050
GSZ7L5S	7.125	7.5	7.875	0.500	60	1.0	3.5	0.058
GSZ8L2S	7.790	8.2	8.610	0.500	60	1.0	6.0	0.062
GSZ9L1S	8.645	9.1	9.555	0.500	60	1.0	6.0	0.068
GSZ10LS	9.50	10	10.50	0.500	80	1.0	8.0	0.075
GSZ11LS	10.45	11	11.55	0.500	80	1.0	8.0	0.076
GSZ12LS	11.40	12	12.60	0.500	80	1.0	10.5	0.077
GSZ13LS	12.35	13	13.65	0.500	80	1.0	10.5	0.079
GSZ15LS	14.25	15	15.75	0.500	80	1.0	11.5	0.082
GSZ16LS	15.20	16	16.80	0.500	80	1.0	14	0.083
GSZ18LS	17.10	18	18.90	0.500	80	1.0	16	0.085
GSZ20LS	19.00	20	21.00	0.500	100	1.0	18	0.086
GSZ22LS	20.90	22	23.10	0.500	100	1.0	20	0.087
GSZ24LS	22.80	24	25.20	0.500	120	1.0	22	0.088
GSZ27LS	25.65	27	28.35	0.500	150	1.0	24	0.090
GSZ30LS	28.50	30	31.50	0.500	200	1.0	27	0.091
GSZ33LS	31.35	33	34.65	0.500	250	1.0	30	0.092
GSZ36LS	34.20	36	37.80	0.500	300	1.0	33	0.093
GSZ39LS	37.05	39	40.95	0.500	350	1.0	36	0.094

**Product Dimensions**

**SOD-323**



Lead code: II stands for Cathode  
 I stands for Anode

Symbol	Min.(mm)	Max.(mm)
A	0.800	1.000
A1	0.000	0.100
A2	0.800	0.900
b	0.250	0.350
c	0.080	0.150
D	1.200	1.400
E	1.600	1.800
E1	2.500	2.700
L	0.475REF	
L1	0.250	0.400
θ	0°	8°