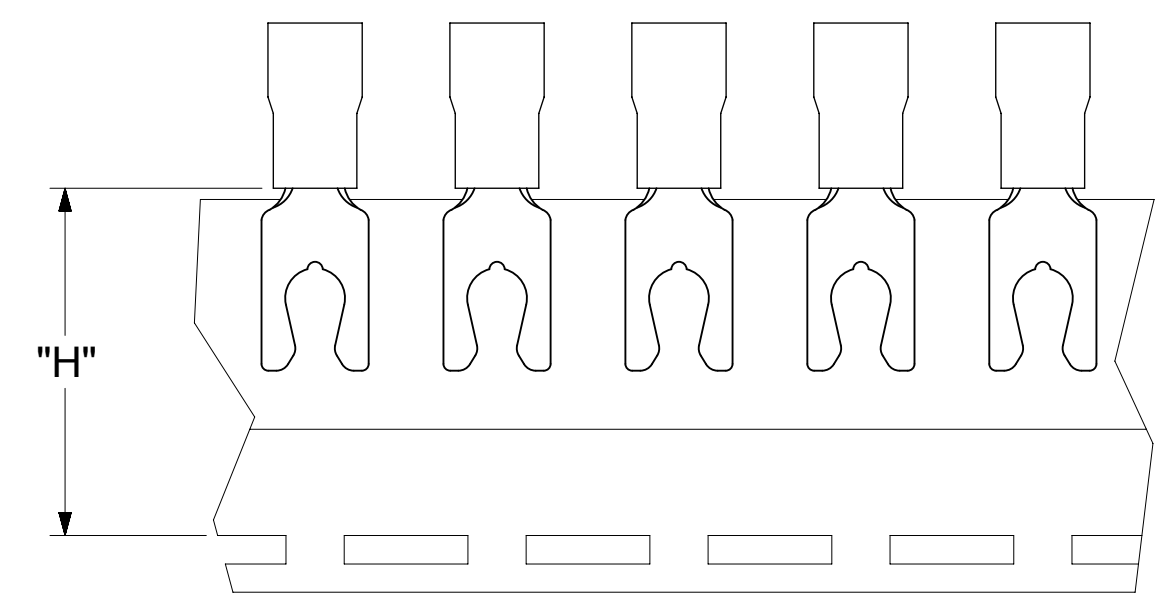
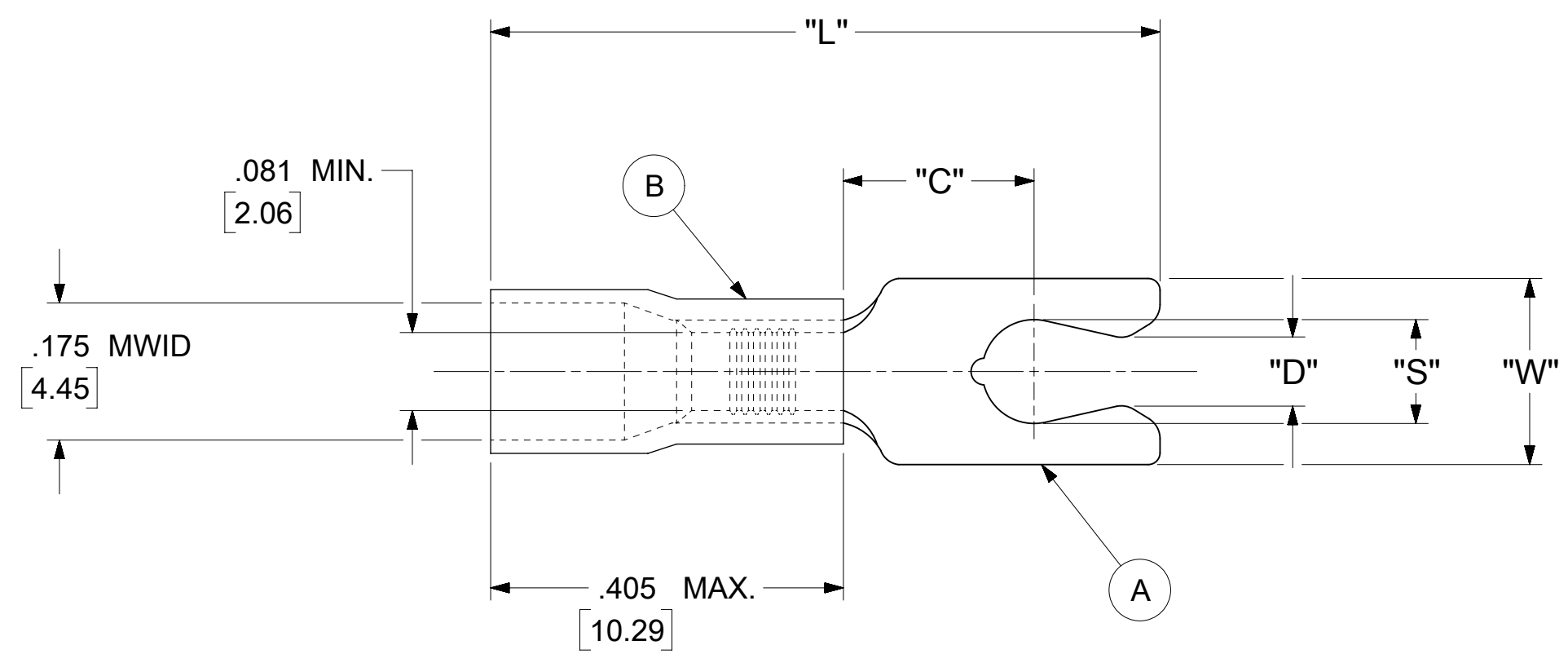


LOOSE PIECE		TAPE MOUNTED		SPECIFICATIONS						
MATERIAL NUMBER	ENGINEERING NUMBER	MATERIAL NUMBER	ENGINEERING NUMBER	STUD SIZE	"S" ±.005 [0.13]	"W" ±.010 [0.25]	"C" MIN.	"L" MAX.	"D" ±.005 [0.13]	"H"
190990032	BB-2716-08X	190990033	BB-2716-08XT	8	.173 [4.39]	.310 [7.87]	.261 [6.63]	.871 [22.12]	.139 [3.53]	.980 [24.89]
190990034	BB-2717-10X	190990035	BB-2717-10XT	10	.198 [5.03]	.330 [8.38]	.261 [6.63]	.919 [23.34]	.156 [3.96]	.980 [24.89]

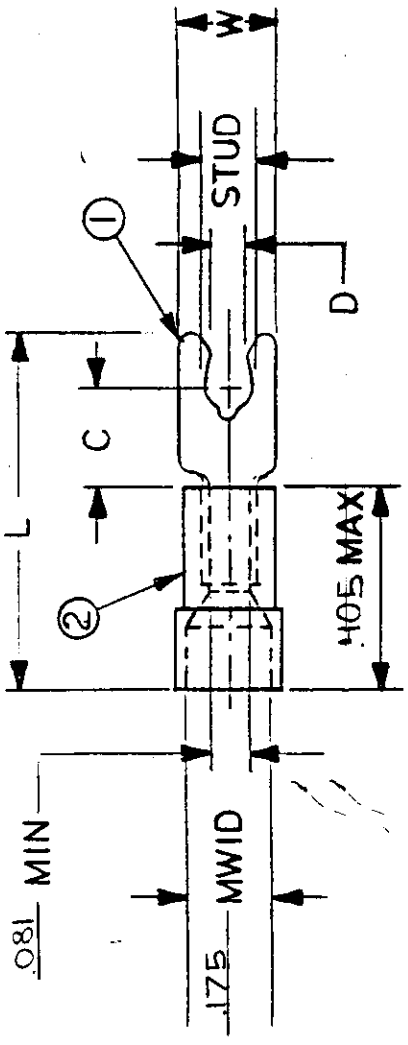


- NOTES:
- MATERIAL:
    - (A). TERMINAL: COPPER (STOCK THICKNESS .031±.001 [0.79])  
PLATING: ELECTRO-TIN (.0003 MIN.)
    - (B). INSULATION: MOLDED PVC (BLUE)
  - MWID: MAXIMUM WIRE INSULATION DIAMETER
  - WIRE SIZE: 16 -14 AWG  
1.0 -2.5 MM<sup>2</sup>
  - "UL" LISTING #E32244  
"CSA" LISTING #18689
  - ALL DIMENSIONS IN INCHES/[MM].
  - PARTS ARE ROHS COMPLIANT.
  - DIMS. SHOWN ARE FOR REFERENCE ONLY.

<b>SYMBOLS</b> DIMENSION UNITS: INCH/MM SCALE: NTS GENERAL TOLERANCES (UNLESS SPECIFIED): 4 PLACES ± --- ± --- 3 PLACES ± --- ± .005 2 PLACES ± 0.13 ± .01 1 PLACE ± 0.25 ± --- 0 PLACES ± --- ± --- ANGULAR TOL ± 0.5 ° DRAFT WHERE APPLICABLE MUST REMAIN WITHIN DIMENSIONS THIRD ANGLE PROJECTION DRAWING SERIES: C-SIZE 19099	THIS DRAWING CONTAINS INFORMATION THAT IS PROPRIETARY TO MOLEX ELECTRONIC TECHNOLOGIES, LLC AND SHOULD NOT BE USED WITHOUT WRITTEN PERMISSION		CURRENT REV DESC: MIGRATION TO ECTR/NX		<p>SNAP SPADE SHORT TONGUE TERMINAL INSULKRIMP SERIES</p> <p>PRODUCT CUSTOMER DRAWING</p> <p>DOCUMENT NUMBER: 190990032 DOC TYPE: PSD DOC PART: 000 REVISION: A</p> <p>MATERIAL NUMBER: SEE TABLE CUSTOMER: GENERAL MARKET SHEET NUMBER: 1 OF 1</p>
	EC NO: 620958 DRWN: ABENJAMINLW 2019/07/17 CHK'D: GROJAS01 2019/07/19 APPR: JMACNEIL 2019/08/05		INITIAL REVISION: DRWN: GZ 1985/04/05 APPR: JMACNEIL 2019/08/05		
	DRWF: GZ 1985/04/05 APPR: JMACNEIL 2019/08/05		THIRD ANGLE PROJECTION DRAWING SERIES: C-SIZE 19099		
	DRWF: GZ 1985/04/05 APPR: JMACNEIL 2019/08/05		THIRD ANGLE PROJECTION DRAWING SERIES: C-SIZE 19099		

**NOTES:**

- ① MAT'L: COPPER, STOCK TKN .031<sup>±.001</sup>  
PLATING: ELECTRO-TIN (.0003 MIN)
- ② INSULATION: MOLDED PVC (BLUE)
- ③ "UL" LISTING #E32244  
"CSA" LISTING 18689



WIRE SIZE: 16-14 AWG.  
1.0-2.5 MM<sup>2</sup>

MWID = MAX. WIRE INSULATION DIA.

PART NUMBER	"W" ±.010	"C" MIN.	"L" MAX.	"D" ±.005	AVAILABLE STUD SIZES	REFERENCE			TITLE:
						SCALE:	NTS	DATE	
BB-2716-	.310	.261	.871	.139	08X (.173 <sup>±.005</sup> )				SNAP SPADE SHORT
BB-2717-	.330	.261	.919	.156	10X (.198 <sup>±.005</sup> )				TONGUE TERMINAL.
									T.INSULKRIMP SERIES
DIMENSIONAL TOLERANCES UNLESS OTHERWISE SPECIFIED									
FRAC.	DEC.	ANG.							
±	±	±							

