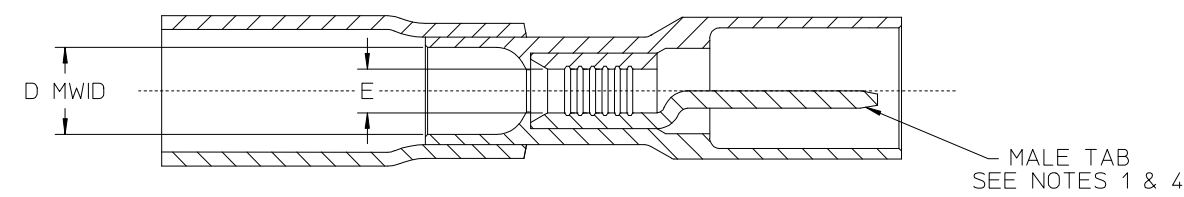
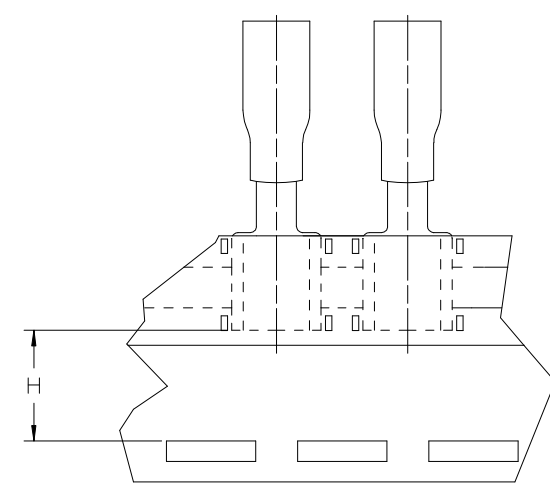
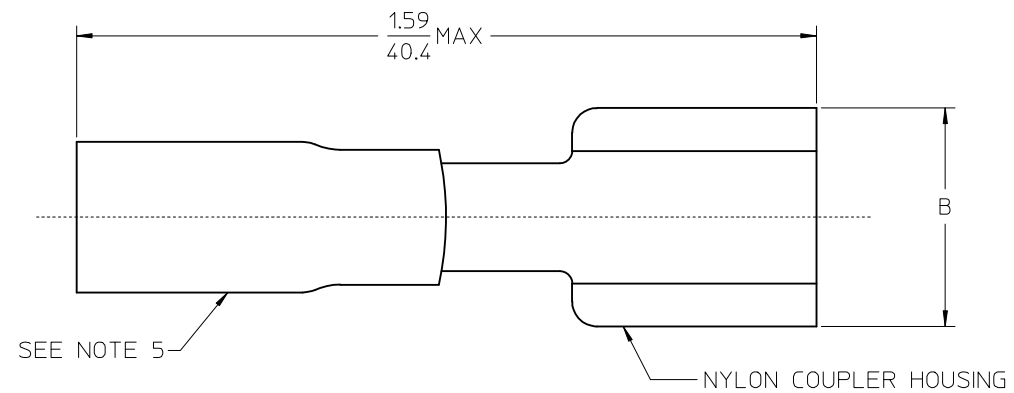


10	9	8	7	6	5	4	3	2	1	
MATERIAL NUMBER	ENGINEERING NUMBER	TAPE MAT'L NUMBER	TAPE ENG. NUMBER	WIRE SIZE AWG	WIRE SIZE MM SQ.	NYLON COLOR	B MAX.	D MWID	E MIN. DIA.	H NOMINAL
191640015	SAA-9260	191640016	SAA-9260T	22-18	.25-1.5	RED	.45/11.4	.17/4.3	.049/1.25	.48/12.2
191640048	SBB-9262	191640049	SBB-9262T	16-14	1.0-2.5	BLUE	.45/11.4	.18/4.5	.082/2.08	.48/12.2

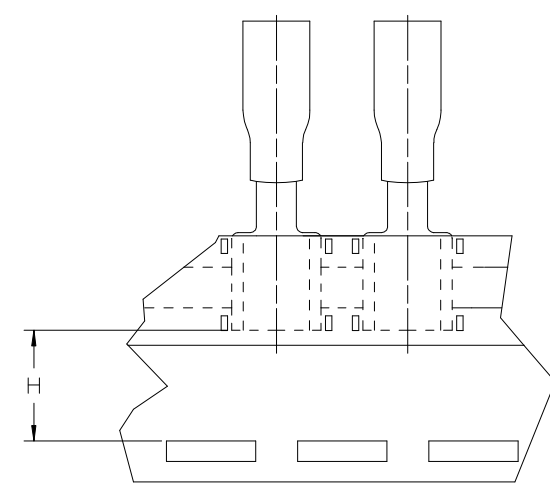
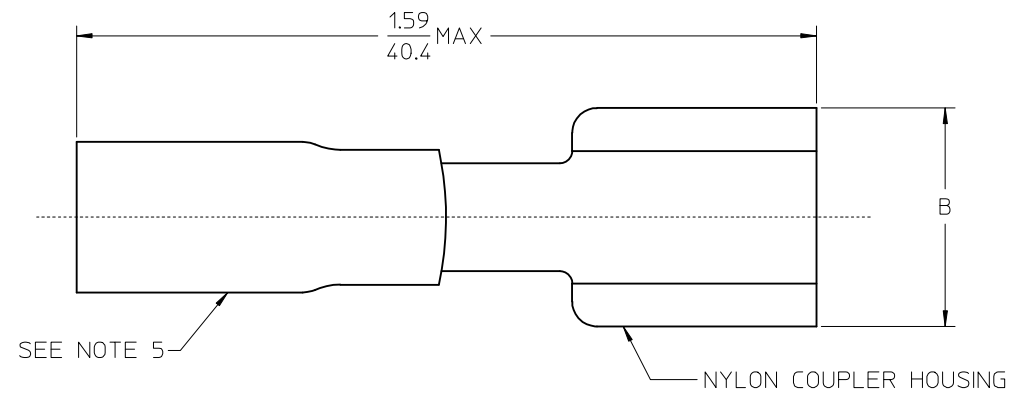


SALES DRAWING

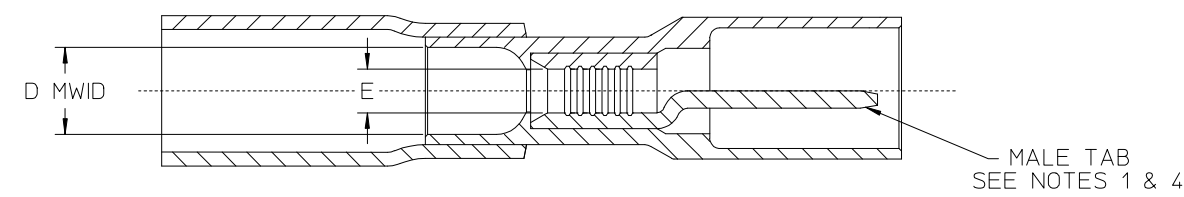
- NOTES:
1. MALE TAB CONFORMS TO UL310.
 2. ALL DIMENSIONS SHOWN ARE BEFORE SHRINK TUBING IS HEATED.
 3. MWID = MAX. WIRE INSULATION DIA.
 4. TAB MATERIAL: COPPER ALLOY, PLATING: TIN.
 5. NYLON HEAT SHRINKABLE TUBING WITH HOTMELT INNER LINER. SEE CHART FOR COLOR.
 6. ALL PARTS ARE RIHS COMPLIANT.

RELEASED EC NO: IPG2018-0080 DRAWN: GROSASO1 2017/08/02 CHKD: JMACNEIL 2017/08/02 APPR: JMACNEIL 2017/08/23	DESCRIPTION A	QUALITY SYMBOLS ▽=0 ▽=0	GENERAL TOLERANCES (UNLESS SPECIFIED)		DIMENSION STYLE IN/MM		SCALE ---	DESIGN UNITS INCH	THIRD ANGLE PROJECTION		
			mm	INCH	DRAWN BY	DATE	TITLE PERMASEAL COUPLER MALE TAB TERMINAL 22-18 & 16-14 AWG				
		4 PLACES	±---	±---	BRE	2003/02/03					
		3 PLACES	±---	±---	CHECKED BY	DATE	MOLEX INCORPORATED				
2 PLACES	±---	±.01	HEB	2003/02/03							
1 PLACE	±0.25	±---	APPROVED BY	DATE	MATERIAL NO. SEE CHART		DOCUMENT NO. SD-19164-038	SHEET NO. 1 OF 1			
DRAFT WHERE APPLICABLE MUST REMAIN WITHIN DIMENSIONS			ANGULAR ±---°		THIS DRAWING CONTAINS INFORMATION THAT IS PROPRIETARY TO MOLEX INCORPORATED AND SHOULD NOT BE USED WITHOUT WRITTEN PERMISSION						

10	9	8	7	6	5	4	3	2	1	
MATERIAL NUMBER	ENGINEERING NUMBER	TAPE MAT'L NUMBER	TAPE ENG. NUMBER	WIRE SIZE AWG	WIRE SIZE MM SQ.	NYLON COLOR	B MAX.	D MWID	E MIN. DIA.	H NOMINAL
191640015	SAA-9260	191640016	SAA-9260T	22-18	.25-1.5	RED	.45/11.4	.17/4.3	.049/1.25	.48/12.2
191640048	SBB-9262	191640049	SBB-9262T	16-14	1.0-2.5	BLUE	.45/11.4	.18/4.5	.082/2.08	.48/12.2



TAPE MOUNTING DETAIL



- NOTES:
1. MALE TAB CONFORMS TO UL310.
 2. ALL DIMENSIONS SHOWN ARE BEFORE SHRINK TUBING IS HEATED.
 3. MWID = MAX. WIRE INSULATION DIA.
 4. TAB MATERIAL: COPPER ALLOY, PLATING: TIN.
 5. NYLON HEAT SHRINKABLE TUBING WITH HOTMELT INNER LINER. SEE CHART FOR COLOR.
 6. ALL PARTS ARE RIHS COMPLIANT.

SALES DRAWING

RELEASED EC NO: IPG2018-0080 DRAWN: GROSAS01 2017/08/02 CHKD: JMACNEIL 2017/08/02 APPR: JMACNEIL 2017/08/23	DESCRIPTION A	QUALITY SYMBOLS ▽=0 ▽=0	GENERAL TOLERANCES (UNLESS SPECIFIED)		DIMENSION STYLE IN/MM		SCALE ---	DESIGN UNITS INCH	THIRD ANGLE PROJECTION		
		4 PLACES ± --- ± --- 3 PLACES ± --- ± --- 2 PLACES ± --- ± .01 1 PLACE ± 0.25 ± ---		mm INCH		DRAWN BY DATE BRE 2003/02/03		TITLE PERMASEAL COUPLER MALE TAB TERMINAL 22-18 & 16-14 AWG			
		ANGULAR ± ---°		DRAFT WHERE APPLICABLE MUST REMAIN WITHIN DIMENSIONS		CHECKED BY DATE HEB 2003/02/03		MOLEX INCORPORATED			
		MATERIAL NO.		SEE CHART		APPROVED BY DATE JMACNEIL 2017/08/23		DOCUMENT NO. SD-19164-038		SHEET NO. 1 OF 1	

THIS DRAWING CONTAINS INFORMATION THAT IS PROPRIETARY TO MOLEX INCORPORATED AND SHOULD NOT BE USED WITHOUT WRITTEN PERMISSION