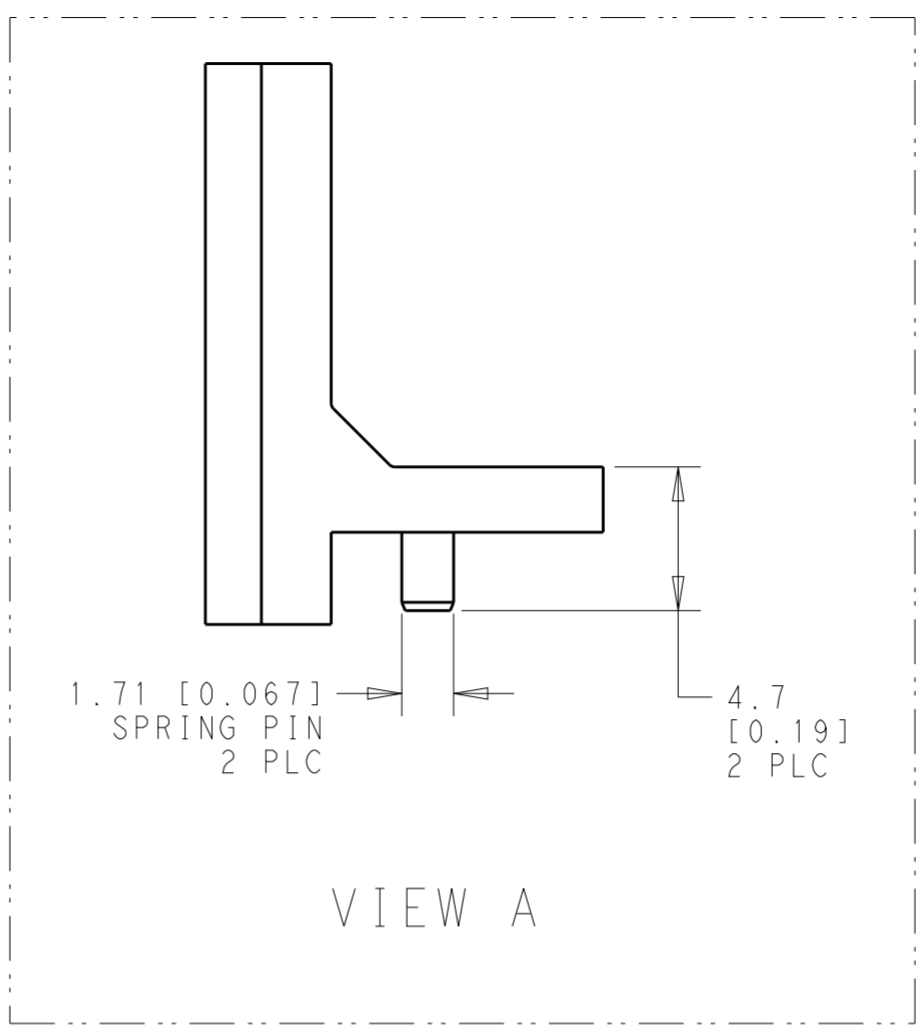
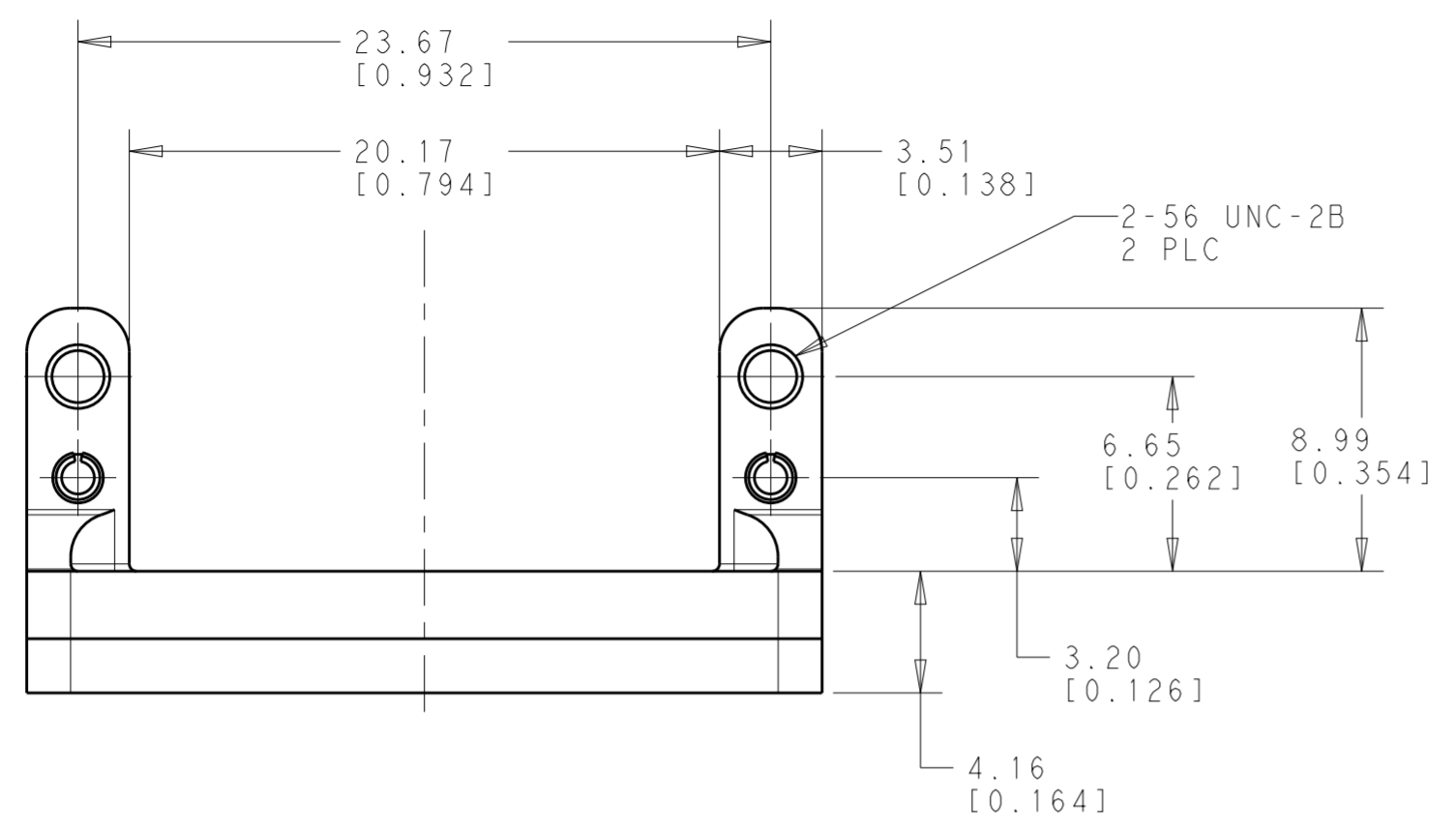
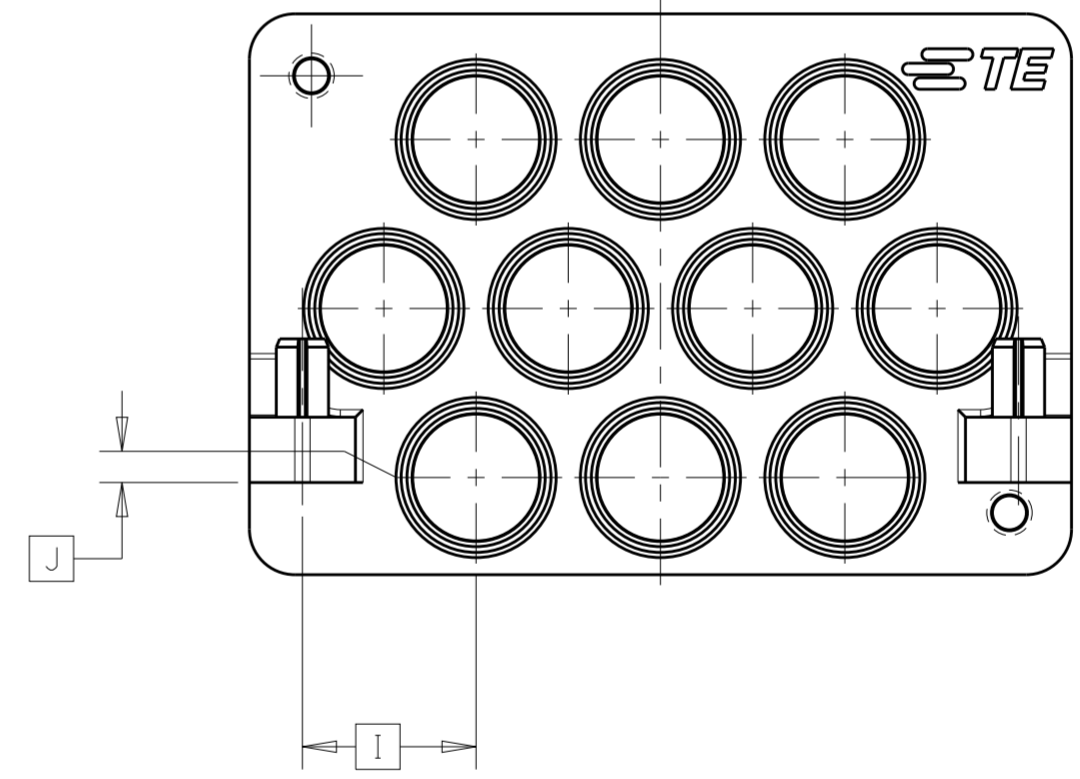
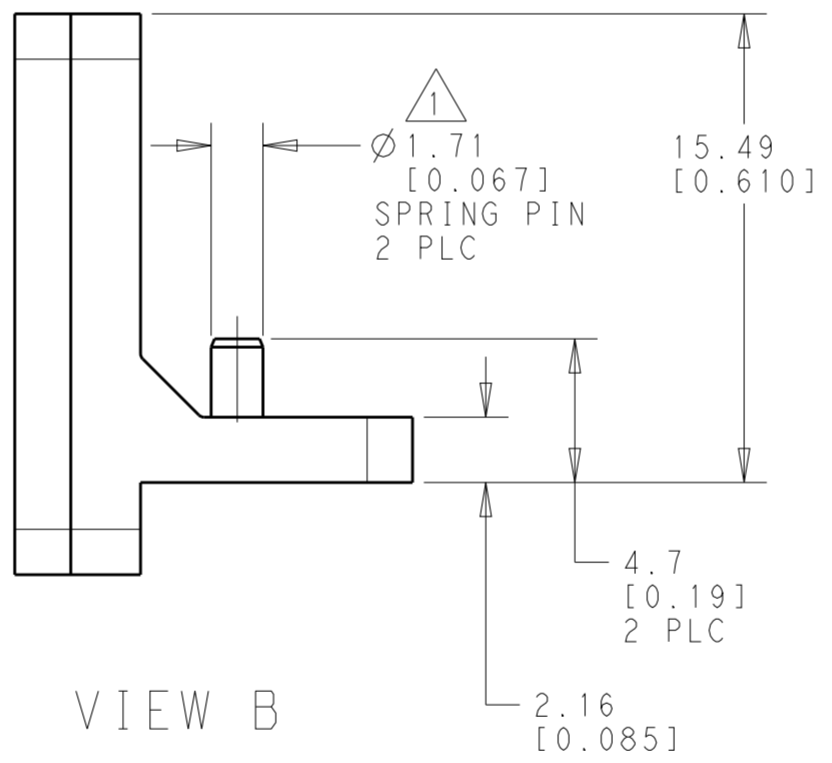
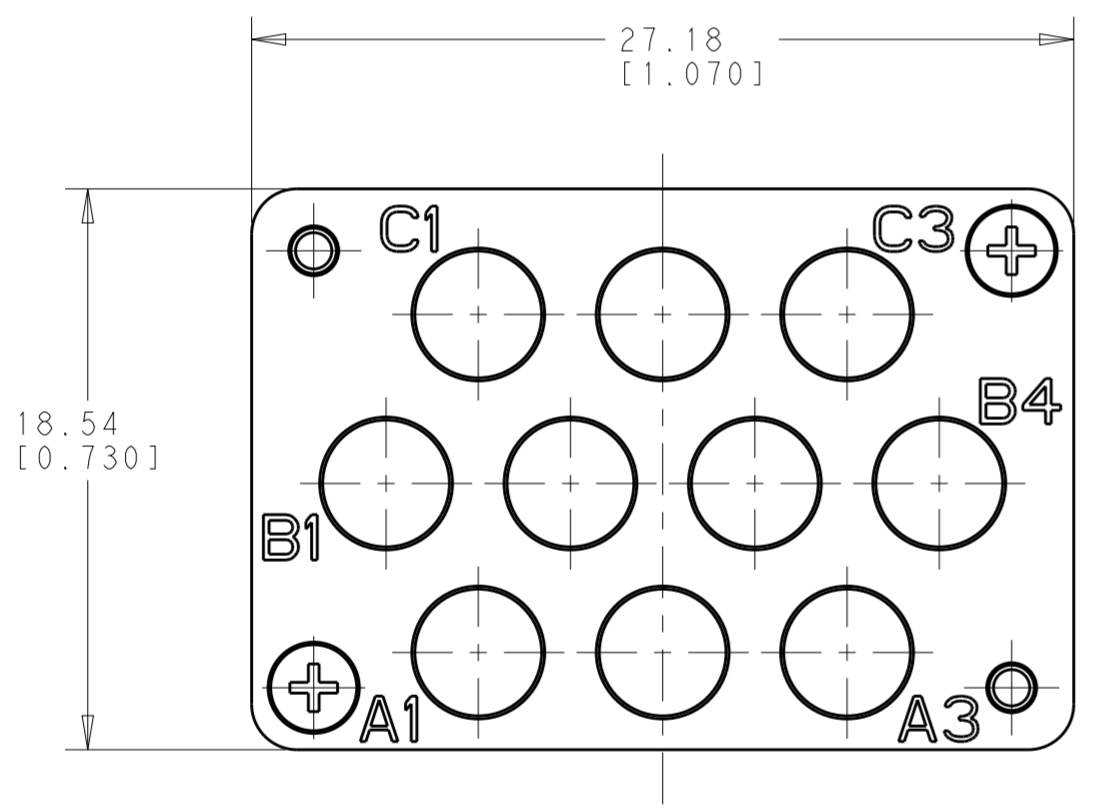


THIS DRAWING IS UNPUBLISHED. RELEASED FOR PUBLICATION 20
 © COPYRIGHT 20 BY - ALL RIGHTS RESERVED.

REVISIONS				
P	LTR	DESCRIPTION	DATE	APVD
C		REV PER ECO 19-008968	7-8-19	CT



HOLE CHART		
HOLE ID	I	J
A1	17.932 [.7060]	0.165 [.0065]
A2	11.836 [.4660]	0.165 [.0065]
A3	5.740 [.2260]	0.165 [.0065]
B1	20.980 [.8260]	5.753 [.2265]
B2	14.884 [.5860]	5.753 [.2265]
B3	8.788 [.3460]	5.753 [.2265]
B4	2.692 [.1060]	5.753 [.2265]
C1	17.932 [.7060]	11.341 [.4465]
C2	11.836 [.4660]	11.341 [.4465]
C3	5.740 [.2260]	11.341 [.4465]



△ PINS SHOWN IN AS-SHIPPED STATE. PINS TO BE PRESSED FLUSH TO TOP OF MODULE FLANGE BY CUSTOMER DURING ASSEMBLY PROCESS.

MATERIALS		
HOUSING FOR 2323863-1 & -2	STAINLESS STEEL PER ASTM A484 AND ASTM A582, TYPE 303	PASSIVATED
HOUSING FOR 2323863-3 & -4	ALUMINUM ALLOY 7075-T651	TRIVALENT CHROMATE CONVERSION COATING PER MIL-DTL-5541F, CLASS 1A, TYPE II
SPRING PIN COMPONENT	NICKEL STAINLESS STEEL MATERIAL	PASSIVATED FINISH

B	2323863-4
A	2323863-3
B	2323863-2
A	2323863-1
VIEW DETAIL	PART NUMBER

THIS DRAWING IS A CONTROLLED DOCUMENT.		DWN K. MILLER 29AUG2017	TE Connectivity NAME VITA 67.3 DAUGHTER CARD MODULE 10 POSN PER VITA 65.1 R6.4.5.6.3 FOR SMPM STRAIGHT CABLE PLUG
DIMENSIONS: mm [INCHES]		CHK D. WILSON 29AUG2017	
TOLERANCES UNLESS OTHERWISE SPECIFIED:		APVD D. WILSON 29AUG2017	
0 PLC ± 1 PLC ±0.5 [.02] 2 PLC ±0.13 [.005] 3 PLC ±0.013 [.0005] 4 PLC ± ANGLES ± FINISH ±		PRODUCT SPEC - APPLICATION SPEC -	
MATERIAL	-	WEIGHT	SIZE A2
CUSTOMER DRAWING		SCALE 4:1	SHEET 1 OF 2

