

Windows 7 & 8.1 Driver Installation For Skywire[®] (mPCIe) Mini PCI Express Adapter Board

NimbeLink Corp.

Revised: June 2015



© NimbeLink Corp. 2017. All rights reserved.

NimbeLink Corp. provides this documentation in support of its products for the internal use of its current and prospective customers. The publication of this document does not create any other right or license in any party to use any content contained in or referred to in this document and any modification or redistribution of this document is not permitted.

While efforts are made to ensure accuracy, typographical and other errors may exist in this document. NimbeLink reserves the right to modify or discontinue its products and to modify this and any other product documentation at any time.

All NimbeLink products are sold subject to its published Terms and Conditions, subject to any separate terms agreed with its customers. No warranty of any type is extended by publication of this documentation, including, but not limited to, implied warranties of merchantability, fitness for a particular purpose and non-infringement.

NimbeLink and Skywire are registered trademarks of NimbeLink Corp. All trademarks, service marks and similar designations referenced in this document are the property of their respective owners.

Table of Contents

Table of Contents	2
Introduction	3
1.1. Applies to the Following Part Numbers	3
1.2. Prerequisites	3
Download and Install the Drivers	4
2.1. Overview	4
2.2. Download the Skywire USB Drivers	4
2.3. Unzip the Drivers	5
2.4. Install the Drivers	7
Set Up the Modem Connection – Windows 7	11
3.1. Overview	11
3.2. Enable the Mobile Broadband Connection	11
Set Up the Modem Connection – Windows 8.1	13
4.1. Overview	13
4.2. Enable the Connection	13
Troubleshooting	15
5.1. Set the APN manually	15

1. Introduction

1.1. Applies to the Following Part Numbers

Orderable Device	Description	Carrier	Network Type
NL-AB-MCPIE	Mini-PCI Express Adapter Board	Any	Any
NL-SW-1xRTT-A	2G 1xRTT	Aeris	CDMA
NL-SW-1xRTT-S	2G 1xRTT	Sprint	CDMA
NL-SW-1xRTT-V	2G 1xRTT	Verizon	CDMA
NL-SW-GPRS	2G GPRS	Any GSM (AT&T, T-Mobile, etc.)	GSM
NL-SW-EVDO-A	3G EVDO, GPS, GLONASS	Aeris	CDMA
NL-SW-EVDO-V	3G EVDO, GPS, GLONASS	Verizon	CDMA
NL-SW-HSPAP	3G HSPA+	Any GSM (AT&T, T-Mobile, etc.)	GSM
NL-SW-HSPAPE	3G HSPA+, European Version	Any EU GSM	GSM
NL-SW-HSPAPG	3G HSPA+, GPS, GLONASS	Any GSM (AT&T, T-Mobile, etc.)	GSM
NL-SW-LTE-TSVG	LTE without Fallback, GPS, GLONASS	Verizon	CDMA
NL-SW-LTE-TNAG	LTE with HSPA+ Fallback, GPS, GLONASS	Any GSM (AT&T, T-Mobile, etc.)	GSM
NL-SW-LTE-TEUG	LTE with HSPA+ Fallback, GPS, GLONASS, EU	Any EU GSM	GSM

1.2. Prerequisites



This document assumes you have completed the initial setup of your modem and development kit. If you have not completed those steps, refer to the Skywire® Development Kit User Manual and complete the modem setup before proceeding.

2. Download and Install the Drivers

2.1. Overview

Skywiremodems have the ability to add mobile network data connectivity to multiple devices. Now, with our Mini PCI Express (mPCIe) Adapter Board, that connectivity comes to computers that have a mPCIe present on the motherboard. This includes laptop computers and desktop computers.

Note: For Section 2, driver download and installation is very similar between Windows 7 and 8.1. The screenshots below are of Windows 7, but apply to Windows 8.1 as well.

2.2. Download the Skywire USB Drivers

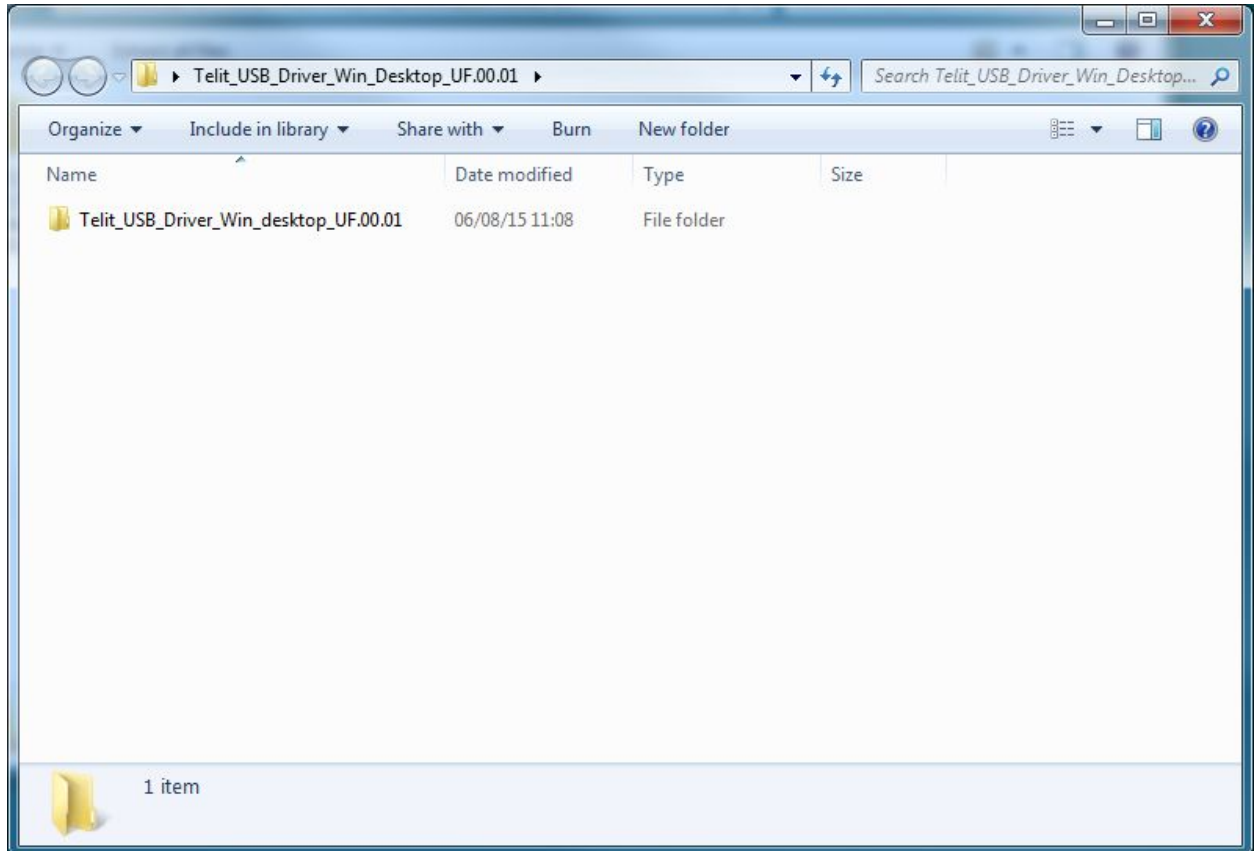
To download the USB driver for your specific modem, please visit the “Development Documentation” section of the NimbeLink page for your modem at www.NimbeLink.com, or consult the following table:

Part Number	Description	URL
NL-SW-1xRTT-A	2G 1xRTT	http://nimbelink.com/2g-cdma-1xrtt/
NL-SW-1xRTT-S	2G 1xRTT	http://nimbelink.com/2g-cdma-1xrtt/
NL-SW-1xRTT-V	2G 1xRTT	http://nimbelink.com/2g-cdma-1xrtt/
NL-SW-GPRS	2G GPRS	http://nimbelink.com/skywire-gsmgprs/
NL-SW-EVDO-A	3G EVDO, GPS, GLONASS	http://nimbelink.com/skywire-evdo/
NL-SW-EVDO-V	3G EVDO, GPS, GLONASS	http://nimbelink.com/skywire-evdo/
NL-SW-HSPAP	3G HSPA+	http://nimbelink.com/skywire-hspa/
NL-SW-HSPAPE	3G HSPA+, European Version	http://nimbelink.com/skywire-hspa/
NL-SW-HSPAPG	3G HSPA+, GPS, GLONASS	http://nimbelink.com/skywire-hspa/
NL-SW-LTE-TSVG	LTE without Fallback, GPS, GLONASS	http://nimbelink.com/skywire-cellular-modem-lte/
NL-SW-LTE-TNAG	LTE with HSPA+ Fallback, GPS, GLONASS	http://nimbelink.com/skywire-cellular-modem-lte/
NL-SW-LTE-TEUG	LTE with HSPA+ Fallback, GPS, GLONASS, EU	http://nimbelink.com/skywire-cellular-modem-lte/

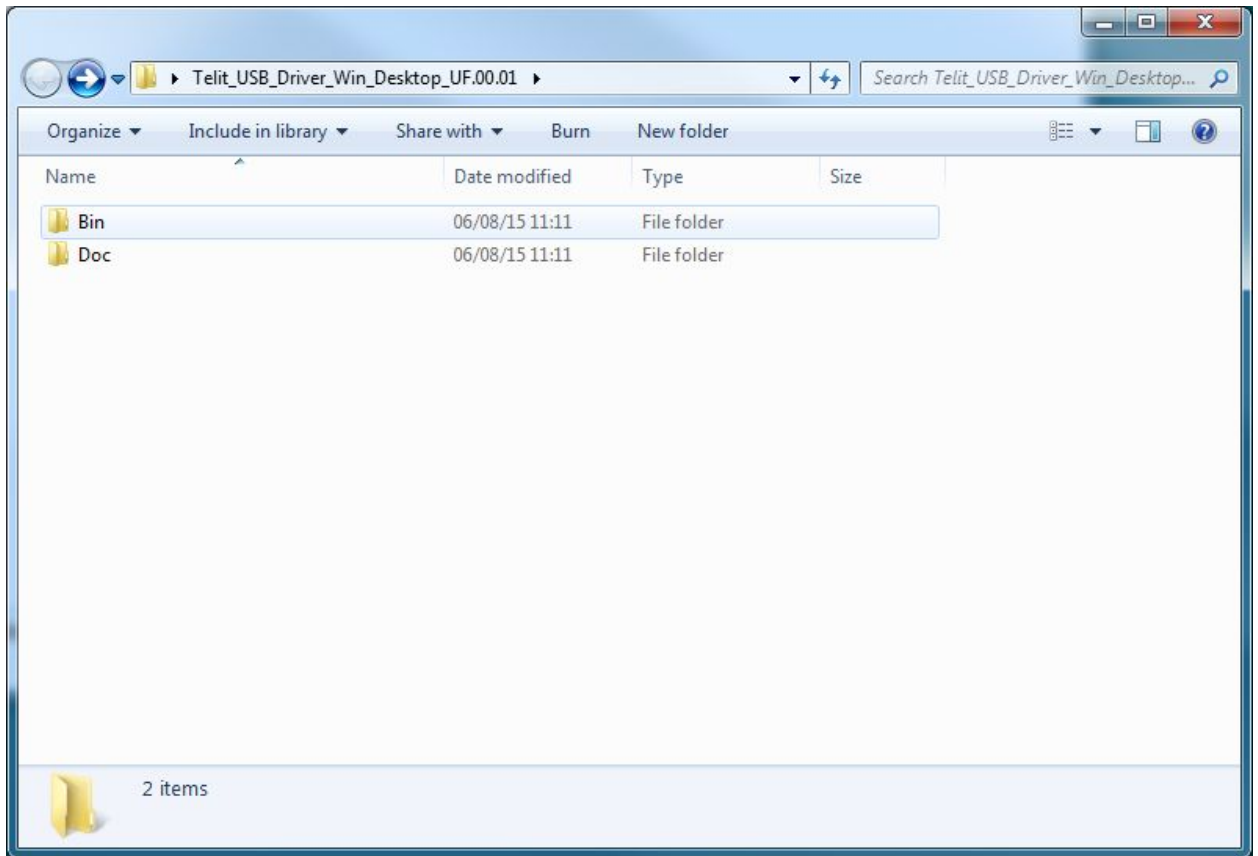
The download is titled “Skywire Windows 7 – Drivers & Guides”. Click the link to download the ZIP file and save the download to your computer.

2.3. Unzip the Drivers

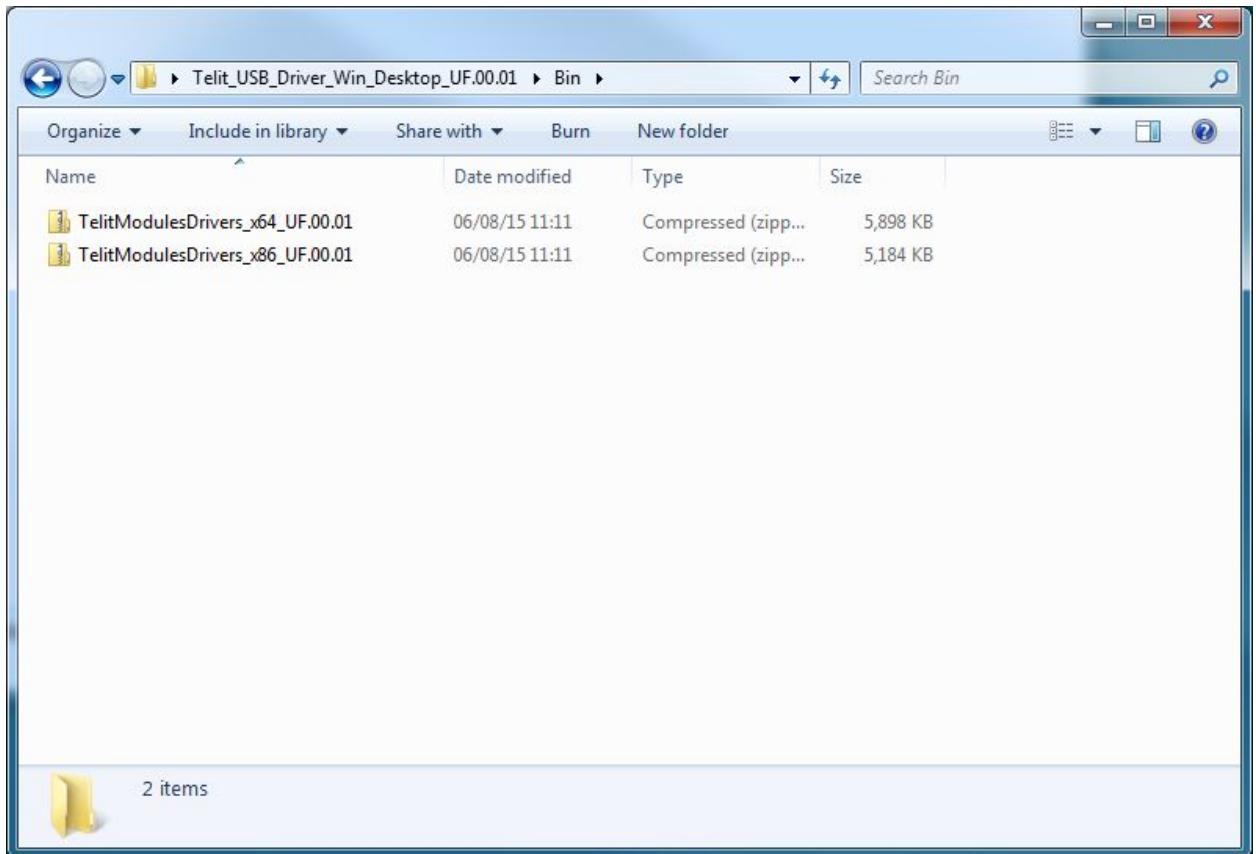
Once the download is complete, navigate to its location and double-click the file to unzip it. Once it is unzipped, double-click on the “Telit_USB_Driver_Win_desktop_UF.00.01” folder:



then double-click on the “Bin” folder:



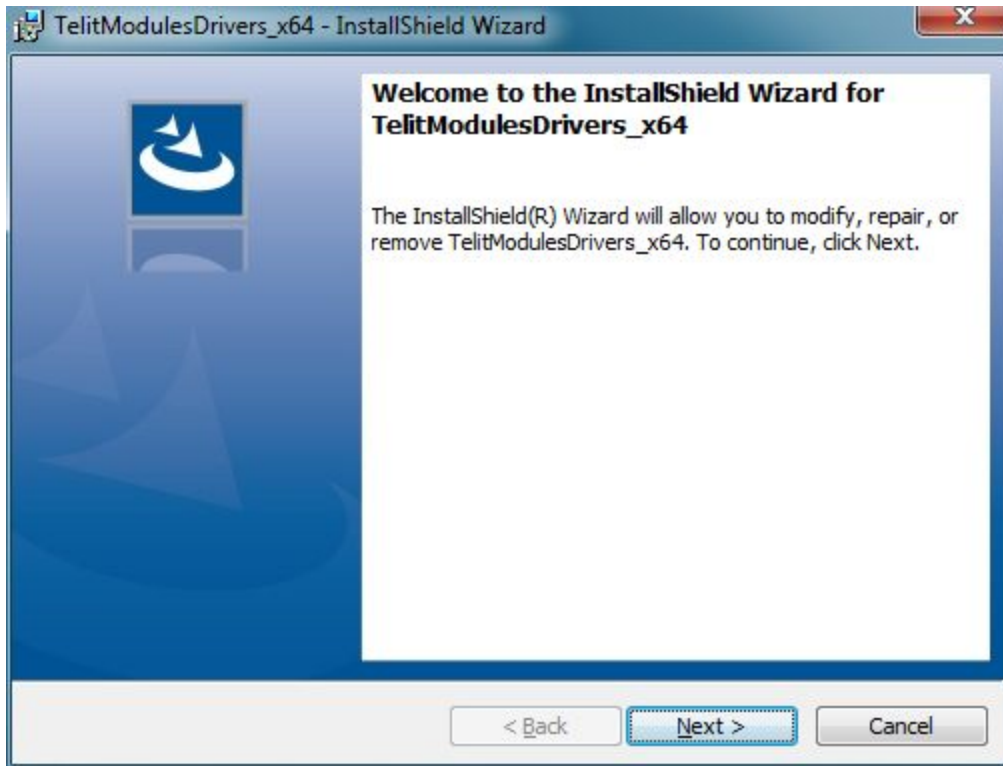
and you will be presented with options for 32-bit (x86) and 64-bit (x64) drivers:



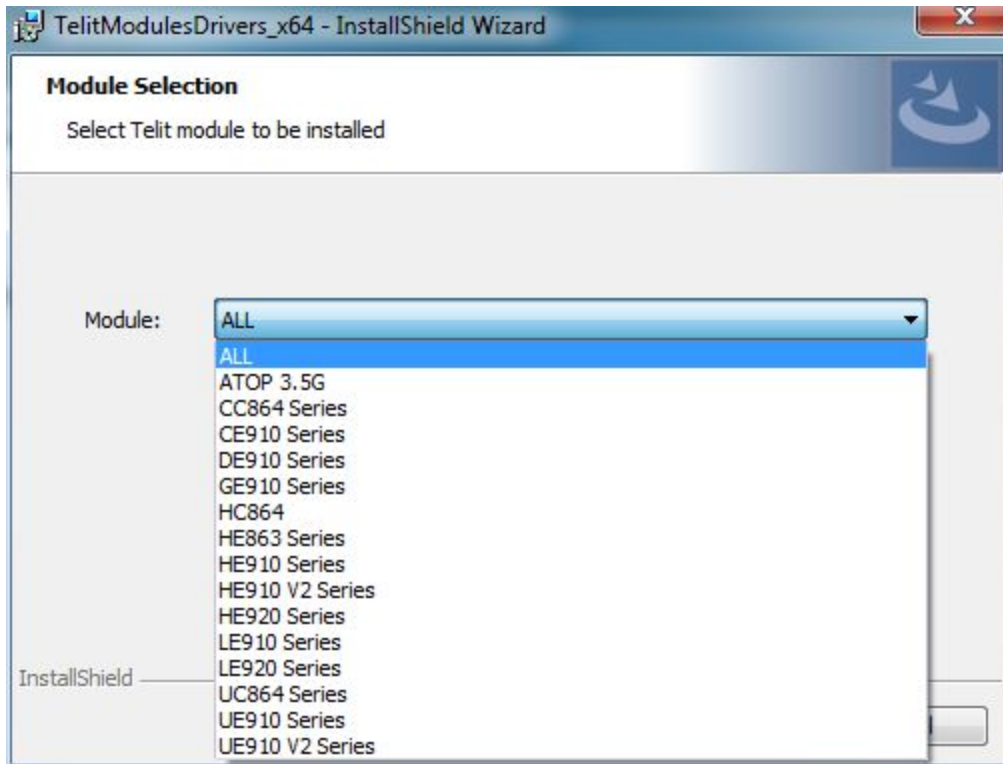
Double-click the type of drivers that you need, unzip them to the same directory, and then double click on the unzipped application: either TelitModulesDrivers_x86 or TelitModulesDrivers_x64. You may get a dialog window that pops up, asking if you would like to run this program, and click “Yes” or “Allow”.

2.4. Install the Drivers

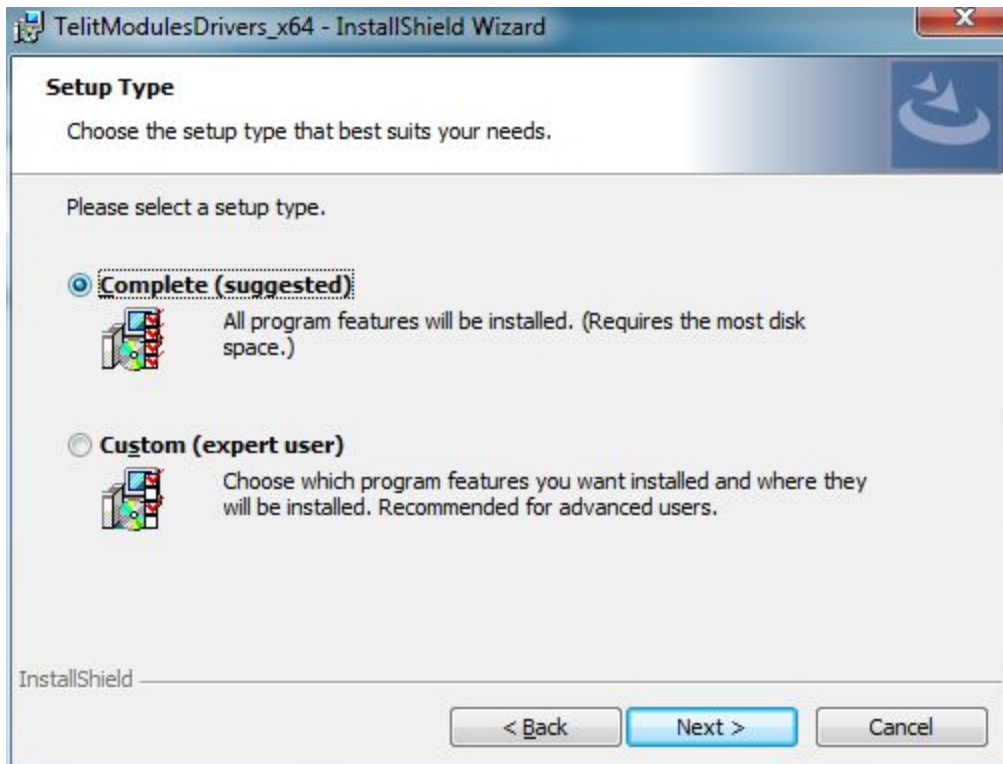
You will be presented with the Telit Install Wizard. On the first screen, click “Next”:



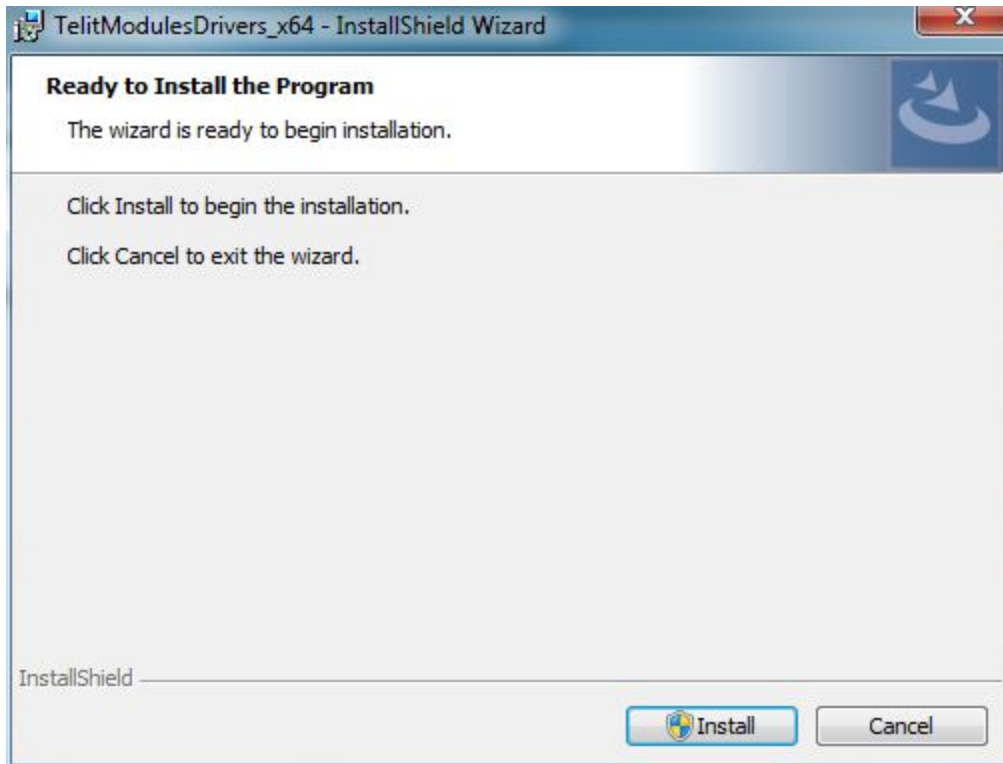
and you will be presented with a screen that will ask which module you would like to install drivers for. If you know the particular module you will be using, you can select it. Otherwise, select “ALL”, and click “Next”:



At the next screen, select “Complete” for the setup type, and click “Next”:

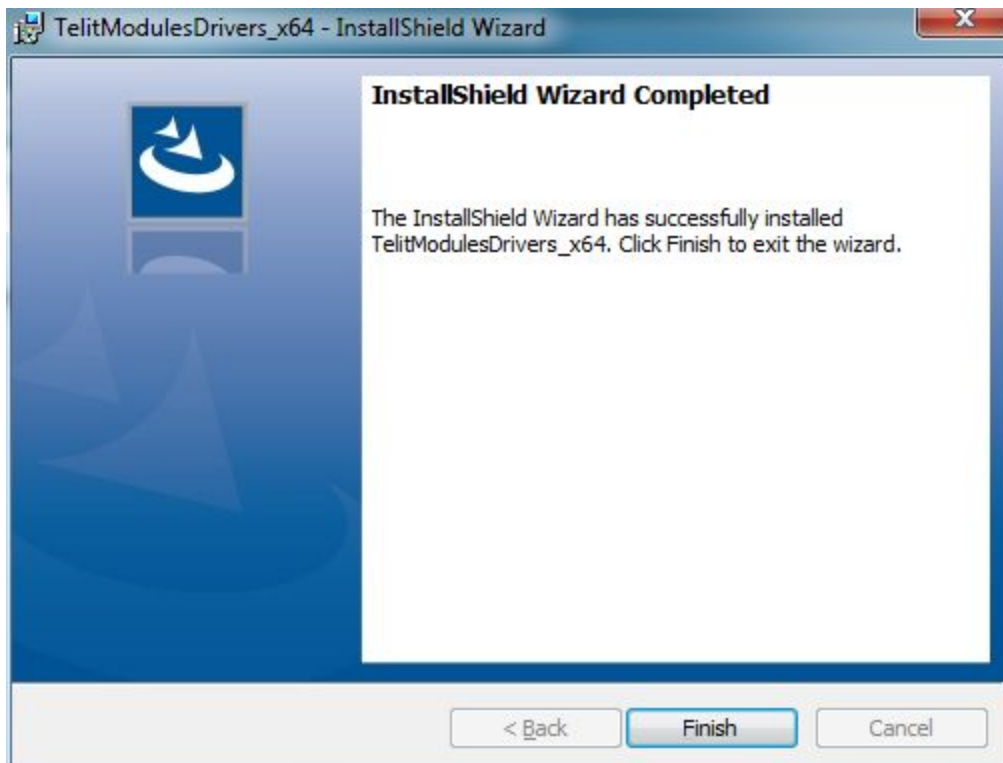


On the next screen, click “Install”:



There will be a dialog box that pops up. If prompted, type in your administrator password, and click "Yes".

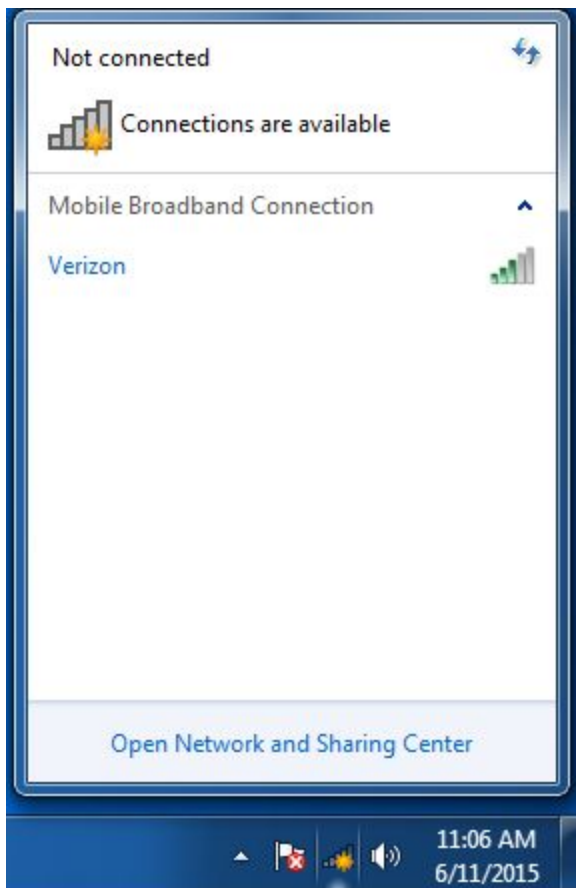
After a short time, the drivers will install:



3. Set Up the Modem Connection – Windows 7

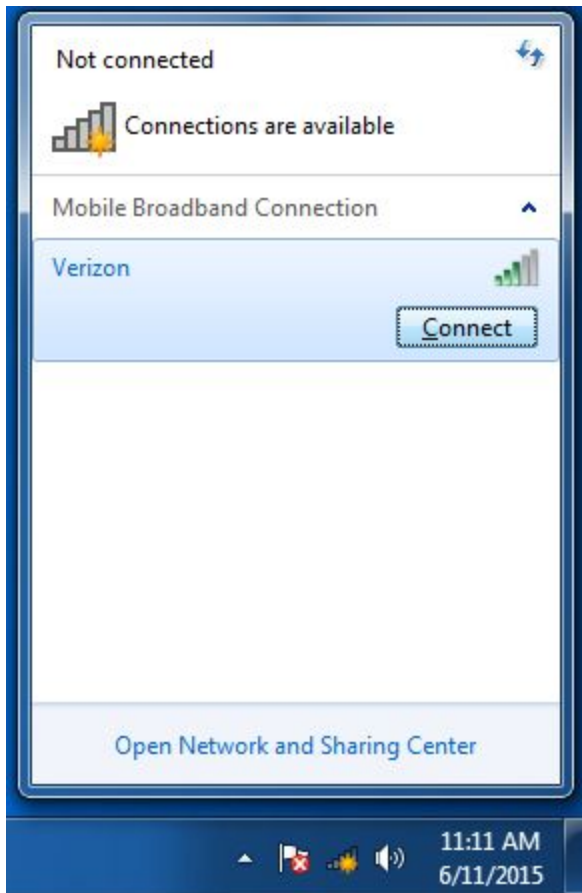
3.1. Overview

Now that you have the modem and the drivers installed, you should have an icon in your System Tray that says “Wireless Connections Are Available”. Click on it, and you should have something similar depending on the modem you’ve installed:



3.2. Enable the Mobile Broadband Connection

Click your Mobile Broadband Connection (in this case, “Verizon”), and then click connect.



After a short time, the modem will be connected and you can use the Mobile Broadband Connection as you would a wired or wireless internet connection.



4. Set Up the Modem Connection – Windows 8.1

4.1. Overview

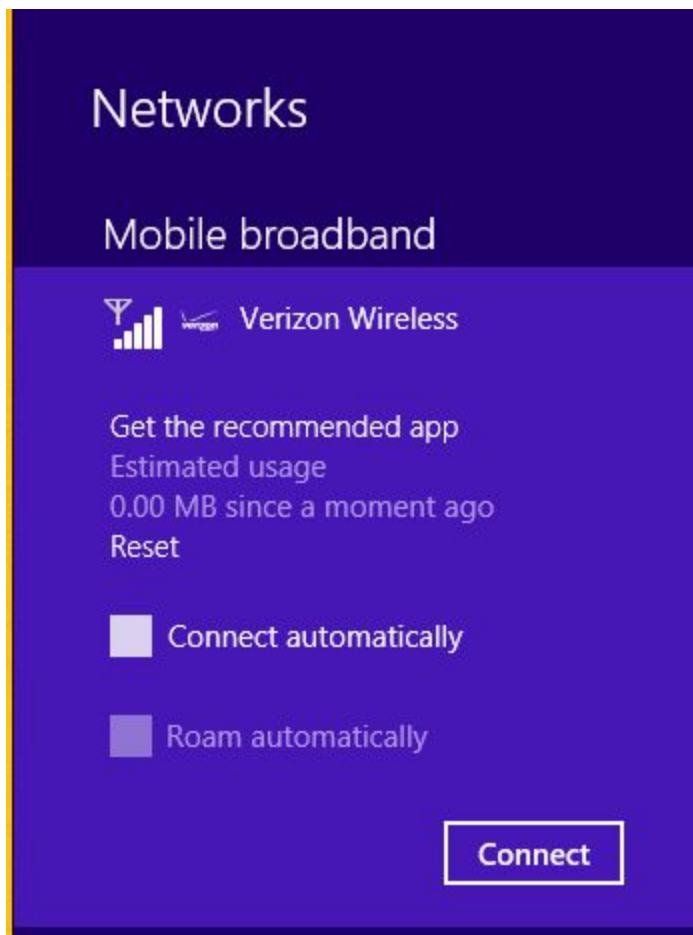
Setting up the modem connection is very similar to Windows 7. The process is the same, but looks different in Windows 8.1.

In the System Tray, there will be an icon that says connections are available:



4.2. Enable the Connection

Click the wireless network in the system tray, and the Charms Bar will appear, showing "Networks":



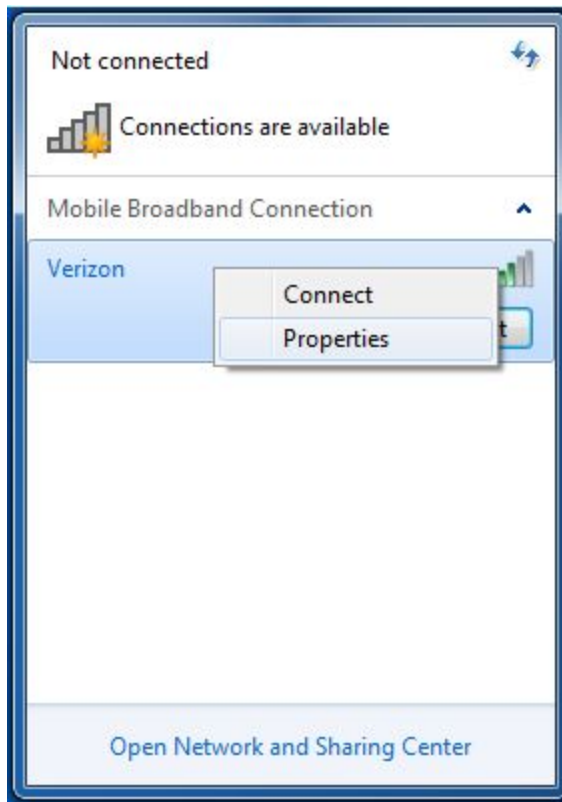
Click “Connect”, and after a short time the Charms Bar will disappear and the modem will be connected to the network:



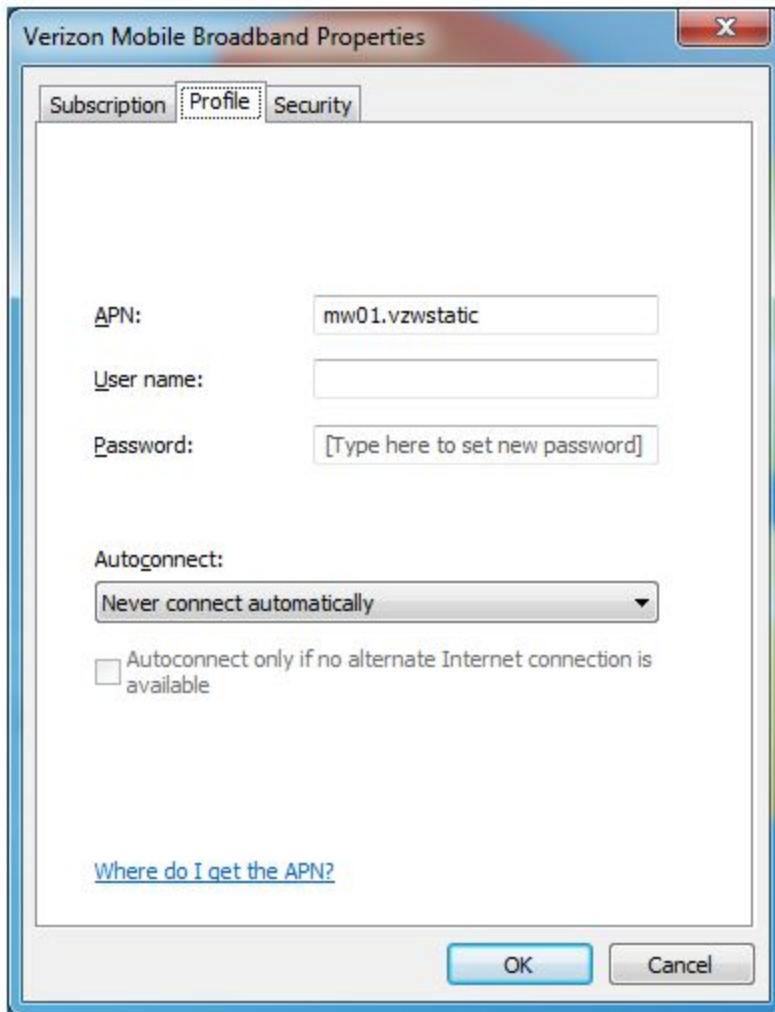
5. Troubleshooting

5.1. Set the APN manually

Right-click on your Mobile Broadband Connection, and click “Properties”:



On the dialog windows that appears, click the “Profile” tab, and in the APN field type in your APN:



Once it is typed incorrectly, click the “OK” button to return to your desktop.