

Mount to the Wall

15 Locate the Wooden Studs

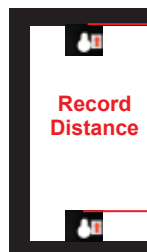
This step applies to wooden stud wall installation only. Determine and mark the exact locations of two stud centers on the wall. Wooden studs should be spaced so that the weight of the screen is distributed evenly. In order to achieve this, mark the studs that are separated by at least one-third to one-half of the projector screen's total width.

For example: if the projector screen is 100" wide, look for two studs that are spaced between 33" to 50" apart. Stud spacing 48" apart would be ideal in this case.

16 Mark the Drill Locations for the Hanging Brackets



Top Hanging Brackets: on the wall, measure and mark 3/4" down from the top edge of the desired frame location. **IMPORTANT** make sure they are marked on the center of the studs and verify they are level.



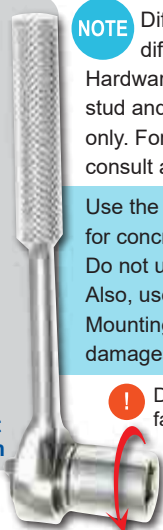
Bottom Hanging Brackets: measure and record the distance from the top of the bracket to the top of the matching bottom bracket on the assembled frame. Mark this distance on the wall from the top marked location.

17

Wooden Stud Wall Mounting: using a power drill and 3/32" drill bit, drill pilot holes of 3/32" (2.38 mm) diameter and approx. 1.18" (30 mm) depth. Secure each **Wall Mounting Screw** by using a socket wrench, leaving about 1/4" of thread exposed.

Concrete Wall Mounting: using a power drill and a 3/8" masonry drill bit, drill mounting holes of 3/8" (10 mm) diameter and approx 1.18" (30 mm) depth at the marked locations. Insert **Concrete Anchors** and hammer them into the wall, secure each **Wall Mounting Screw** by using a socket wrench, leaving about 1/4" of thread exposed.

Socket Wrench



NOTE Different wall types require different types of hardware. Hardware is included for wooden stud and concrete wall mounting only. For other wall types, please consult a professional.

Use the anchors provided for concrete wall mounting only. Do not use them for drywall. Also, use socket wrench for Wall Mounting Screws to prevent damages to the screw heads.

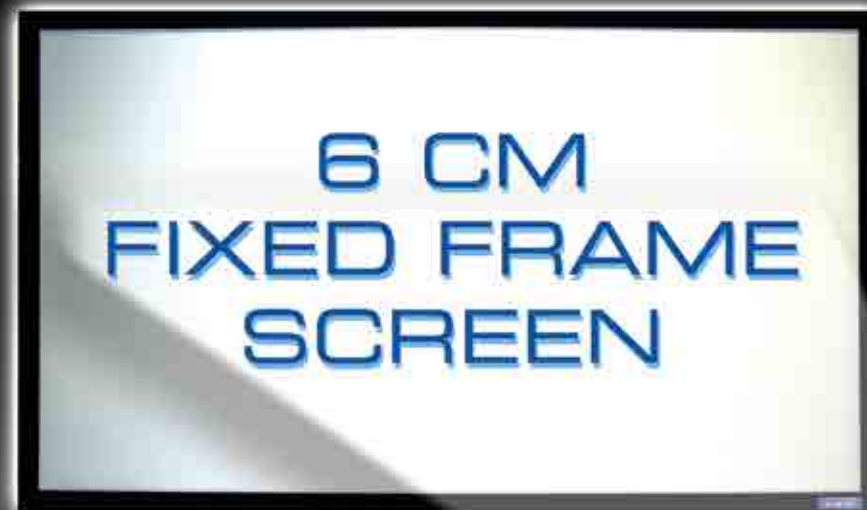
! Do not use power drill to fasten the Mounting Screws.

18 Slide the **Hanging Brackets** until they line up with the secured mounting hardware. With an assistant, lift the screen gently onto the secured **Wall Mounting Screws** so that the keyholes on the **Hanging Brackets** fit over the screws.

1/4"

! **IMPORTANT** Verify that each Hanging Bracket is properly secured before releasing the projector screen to avoid injuries and property damages.

INSTALLATION MANUAL



Hardware

! WARNING BEFORE YOU BEGIN THE INSTALLATION

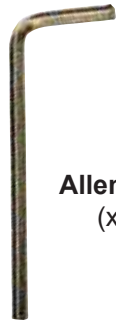
- Please read this entire installation manual before you start installation and assembly.
- Remember that the assembly will require at least two people for some steps.
- Do not assemble in areas of high temperature to avoid damaging to the screen.
- The included mounting hardware may not be appropriate for all installation types, choose the proper mounting hardware for your specific installation type.
- If you are not able to safely install the screen, consult a professional.



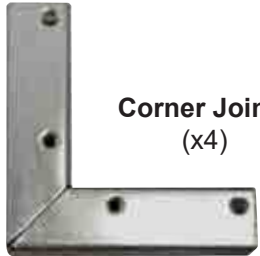
Frame Screws
(x24)



Fabric Tensioners
(number depends on screen size)



Allen Key
(x1)



Corner Joints
(x4)



Center Joints
(x2)



**Wall Mounting Screws
& Concrete Anchors**
(x4)



Hanging Brackets
(x4)

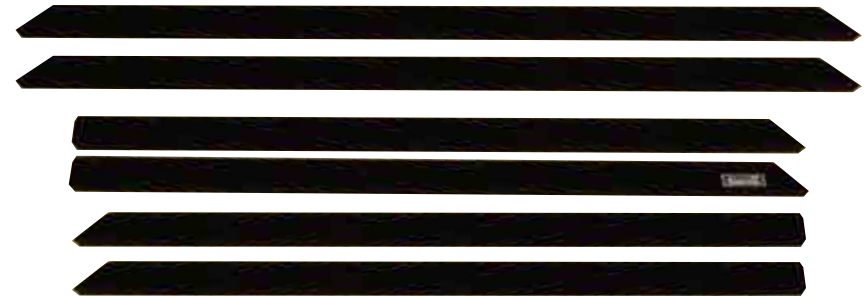
Parts



Support Bar
(x1)



Screen Fabric
(x1)



Frame Pieces
2 Vertical, 4 Horizontal
(x6)



Metal Rods
2 Vertical, 4 Horizontal
(x6)

Required Tools

- Allen Key (Included)
- Level
- Pencil
- Power Drill
- Screwdriver
- Socket Wrench

NOTE The parts and hardware on this manual may vary slightly from the actual parts and hardware, but functionality would be the same.

Preparation

1

Make sure that the assembly area is clean and clear of debris and sharp objects. At least two feet of extra space is required on all four sides when the screen is spread out.

Hardware Box

Unpack all the parts in the box, but do not unroll the **Screen Fabric** yet.

IMPORTANT

Hardware is stored in a separate box. Do not discard this box!

TIP

QualGear logo is on the bottom right **Frame Piece**.

2



3



Unwrap the **Frame Pieces**, and lay them out carefully.



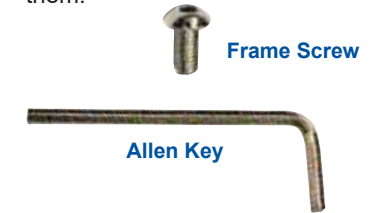
Then flip the **Frame Pieces**, so the metal surface is facing upward.

Connect the Horizontal Frame Pieces

4



Line up the non-angled frame ends of the **Horizontal Frame Pieces** and slide the **Center Joint** in the middle to connect them.



Secure the **Horizontal Frame Pieces** with the **Frame Screws** using the **Allen Key**. Repeat these steps for the other two **Horizontal Frame Pieces**.



NOTE

The red arrow stickers specify approximate locations of where the **Fabric Tensioners** need to be placed. Each arrow corresponds to one opening on the screen fabric.

Place the Fabric Tensioners

5



Before connecting the corner **Frame Pieces**, slide the **Fabric Tensioners** into the track of the aluminum frame.



The red arrows on the frames indicate how many **Fabric Tensioners** to insert for each **Frame Piece**. Repeat these steps for all the **Frame Pieces**.

3

4

Place the Hanging Brackets

6

Hanging Brackets



Top

Bottom

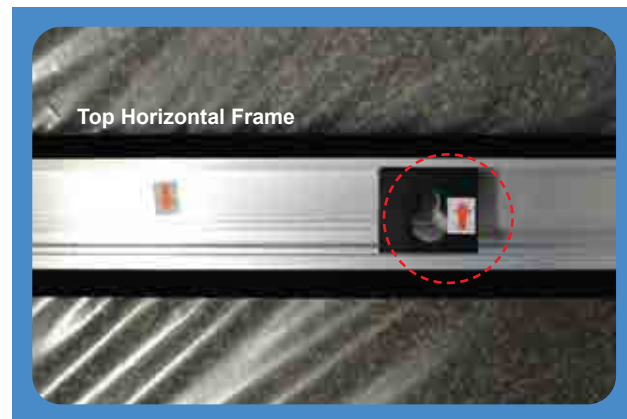
Hanging Brackets are used to hang the projector screen onto the wall.

There are four **Hanging Brackets** for each projector screen. Two go on the top and two on the bottom frame track.

Slide the two bottom **Hanging Brackets** into the track of the bottom frame. Repeat these steps for the top frame. The brackets should be able to slide freely along the frame track.



Bottom Horizontal Frame



Top Horizontal Frame

TIP Red arrows on the Hanging Brackets always point upward.

5

Connect the Vertical and Horizontal Frame Pieces

7



Insert the **Corner Joint** into the assembled **Horizontal Frame Pieces** and tighten with the **Frame Screws** by using the **Allen Key**.

Corner Joint

Then, connect the secured **Horizontal Frame** to the **Vertical Frame** by inserting the other end of the **Corner Joint**.

NOTE Tighten the screws but do not over tighten, adjustments can be made later by loosening the frame screws.



Horizontal Frame

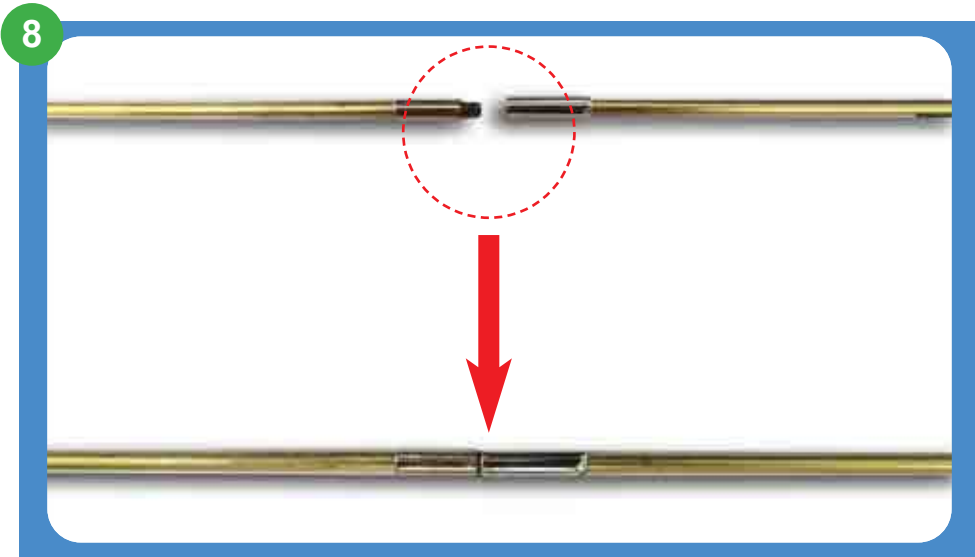
Vertical Frame



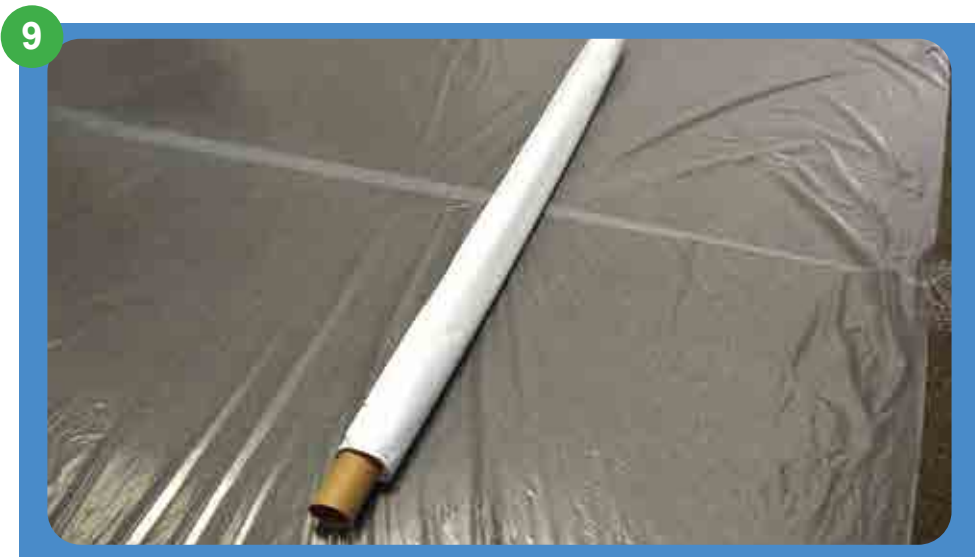
Tighten all the **Frame Screws** to secure the corner of the projector screen. Repeat these steps until all four corners are assembled and secured.

6

Connect the Metal Rods

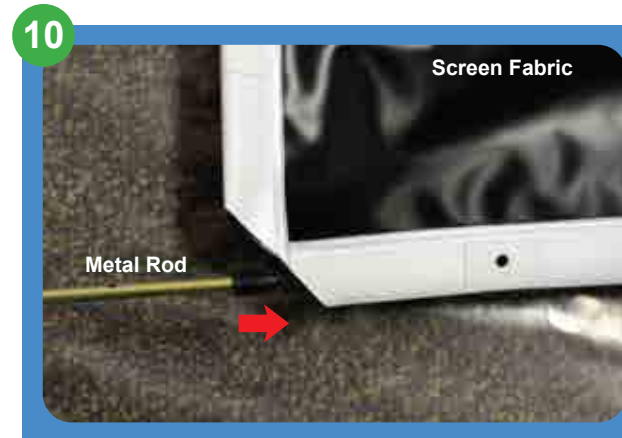


There are four **Metal Rods** that need to be connected. Connect the male thread of the metal rod to the female thread of the other. Repeat these steps for the other two **Metal Rods**.



Make sure that the floor is clean and there are no sharp objects, then unroll the **Screen Fabric** and place it gently on the floor with the viewing side facing down.

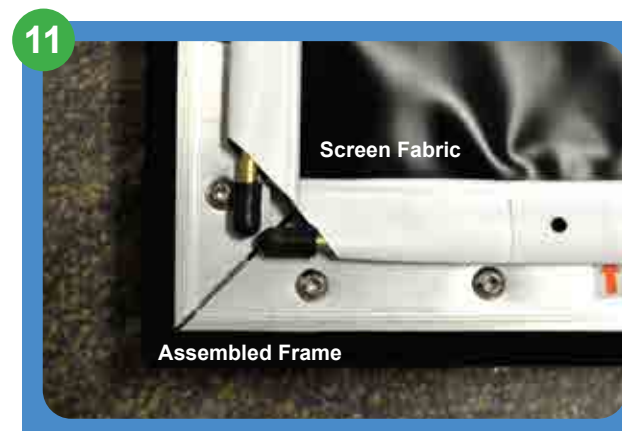
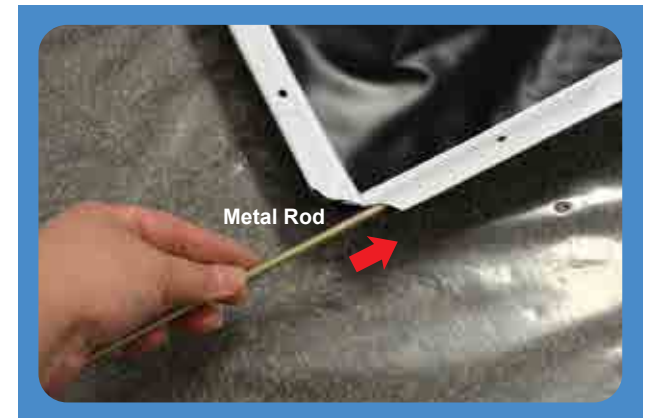
Insert the Metal Rods



According to the length of the **Metal Rods**, match each rod to the correct side of the **Screen Fabric**, then carefully insert each **Metal Rod** into the **Screen Fabric** pocket.

Insert the rest of the **Metal Rods** to the **Screen Fabric** pockets located at the edge.

NOTE The longer metal rods are for the horizontal frame pieces and shorter rods are for the vertical frame pieces.

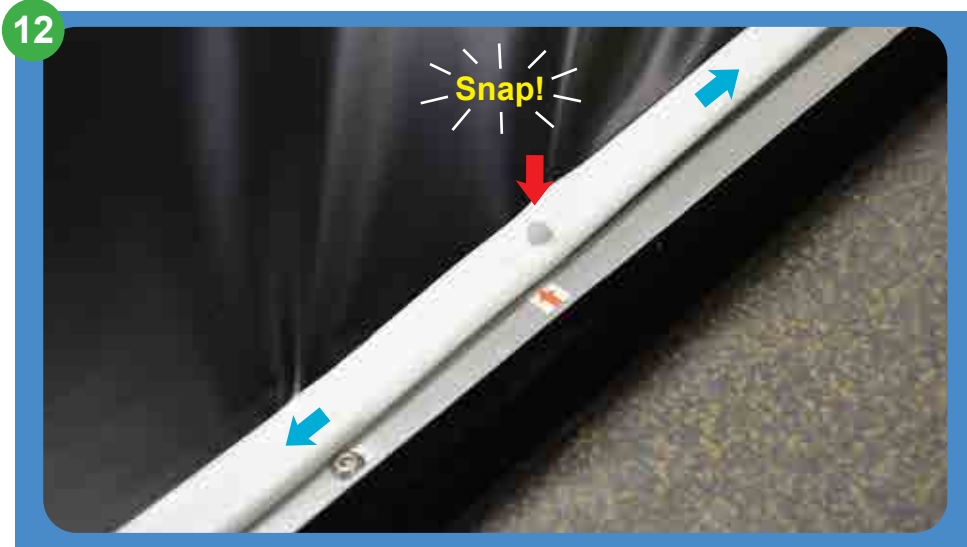


After all four metal rods are inserted, lay the **Screen Fabric** onto the back of the assembled frame.

! WARNING

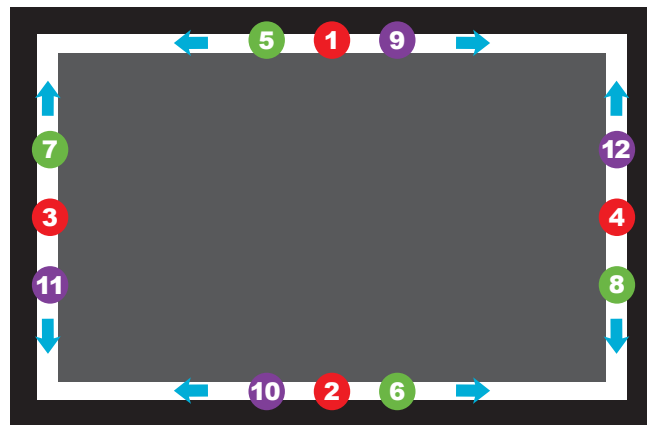
Do not force the Metal Rod as it may exit the pocket and damage the viewing area of the screen.

Attach the Screen Fabric to the Frame



Line up each **Fabric Tensioner** with an arrow sticker. Begin with the center **Fabric Tensioner** on each side of the frame. Once all the center **Fabric Tensioners** are secured, then work towards each corner by snapping the **Fabric Tensioners** one at a time, securing the **Screen Fabric** over each **Fabric Tensioner** along the way.

See the illustration below to determine the order of **Fabric Tensioners** to attach.



Center of the Frame

NOTE

Screen Fabric is designed to stretch. Some force may be required to complete this step. Once finished, the Screen Fabric should be tight all around.

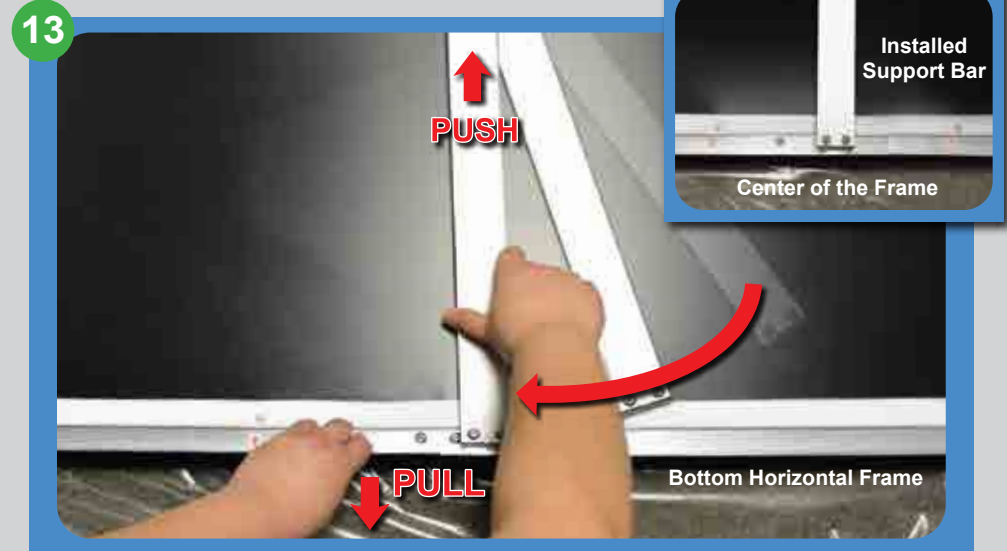
TIP

A fair amount of tension is needed to pull the rods over each Fabric Tensioner. If you are having difficulty with this step, try using a screwdriver as a lever to pull the rod over each Fabric Tensioner, and be careful not to damage the Screen Fabric.

9

Install the Support Bar

! **WARNING** If you are having difficulty getting the support bar in place, do not use excessive force. Doing so may damage the projector screen.



Support Bar provides extra support to the center of the projector screen and prevents it from sagging. To install the **Support Bar**, it is best to work with an assistant.

At the center of the frame, while one person pulls the bottom of the screen, the other person needs to push the **Support Bar** up to the groove of the top horizontal frame and slide it diagonally into the groove of the bottom horizontal frame until it is straight over the center of the frame.

TIP

You may need to undo one or two fabric tensioners to help slide the bar in place.

Making Adjustments



If you notice any gaps at the frame joints, first loosen the **Frame Screws** on the back of the frame with the **Allen Key**. While one person holds the horizontal and vertical frame pieces tightly together, the other person will need to tighten the **Frame Screws**. Repeat these steps until there is no gap. Tighten the **Frame Screws** but do not over tighten them.

10