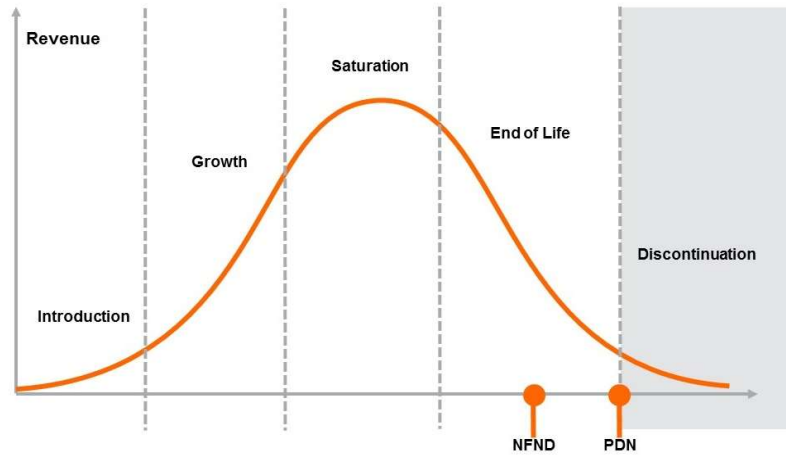


Light is OSRAM

Product Or Individual Q-Code Discontinuation (acc. JEDEC J-STD-048)
OS-PDN-2021-038

04 May 2021

Last order:	04 May 2021
Last delivery:	04 May 2021



Please direct your feedback to your local Sales office.

DISCONTINUED				NEW (REPLACEMENT)		
Device	Ordering Code	Brand	Reason for discontinuation	Device	Datasheet Ordering Code	Brand
GW PSLR31.EM-LQLR-XX51-1-150-R18-MC	Q65112A3497	DURIS S 5	Brightness increase – dim selections need to be phased-out	No Replacement		
GW PSLR31.EM-LQLR-XX52-1-150-R18-MC	Q65112A3499	DURIS S 5	Brightness increase – dim selections need to be phased-out	No Replacement		
GW PSLR31.EM-LQLR-XX53-1-150-R18-MC	Q65112A3495	DURIS S 5	Brightness increase – dim selections need to be phased-out	No Replacement		
GW PSLR31.EM-LR-XX32-1-150-R18-XX	Q65112A3102	DURIS S 5	Brightness increase – dim selections need to be phased-out	No Replacement		
GW PSLR31.EM-LR-XX53-BE-150-R18-XX	Q65112A2435	DURIS S 5	Brightness increase – dim selections need to be phased-out	No Replacement		
GW PSLR31.EM-LR-XX57-1-150-R18-MC	Q65112A5302	DURIS S 5	Brightness increase – dim selections need to be phased-out	No Replacement		
GW PSLR31.PM-LWLY-XX53-DF-150-R18-S	Q65112A6335	DURIS S 5	Brightness increase – dim selections need to be phased-out	No Replacement		
GW PSLR31.EM-LPLQ-XX58-1-150-R18-KON	Q65112A1360	DURIS S 5	Brightness increase – dim selections need to be phased-out	No Replacement		
GW PSLR31.EM-LQLR-XX32-1-150-R18-XX	Q65112A0321	DURIS S 5	Brightness increase – dim selections need to be phased-out	No Replacement		
GW PSLR31.EM-LQ-XX57-1-150-R18	Q65112A1944	DURIS S 5	Brightness increase – dim selections need to be phased-out	GW PSLR31.EM-LQLR-XX57-1-150-R18	Q65112A7934	DURIS S 5
GW PSLR31.PM-LWLZ-XX51-1-150-R18	Q65112A5603	DURIS S 5	Brightness increase – dim selections need to be phased-out	GW PSLR31.PM-LXL1-XX51-1-150-R18	Q65112A7121	DURIS S 5