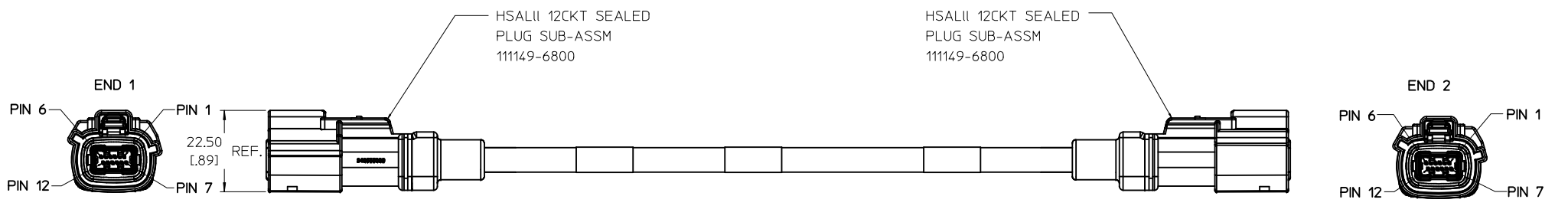
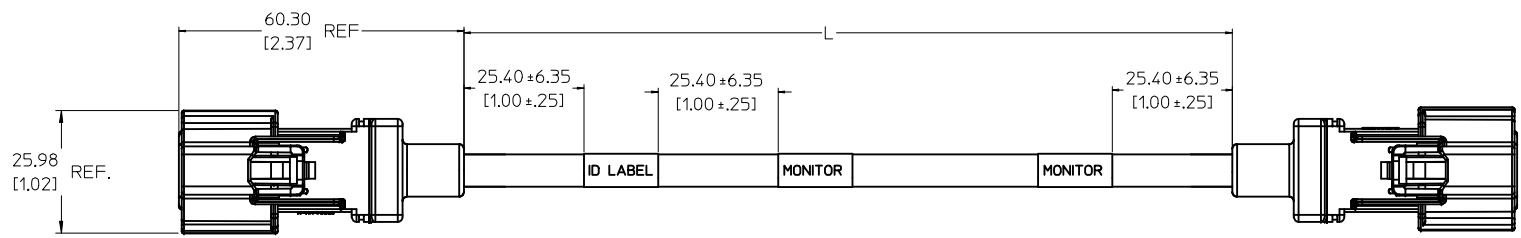
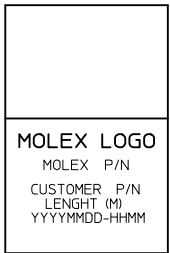


MOLEX PN	CUST PN	DESCRIPTION	END 1		END 2		L (m)	L (in)	TOL mm [in]
			POL	COLOR	POL	COLOR			
111149-1080	RE556816	HSALII 12CKT DP ASMM STR SLD PLUG - STR SLD PLUG	A	BLACK	A	BLACK	0.8	31	≤2m: +25[1.0]/-0
111149-1001		HSALII 12CKT DP ASMM STR SLD PLUG - STR SLD PLUG	A	BLACK	A	BLACK	1	39	
111149-1002		HSALII 12CKT DP ASMM STR SLD PLUG - STR SLD PLUG	A	BLACK	A	BLACK	2	79	
111149-1003		HSALII 12CKT DP ASMM STR SLD PLUG - STR SLD PLUG	A	BLACK	A	BLACK	3	118	>2m: +50[2.0]/-0
111149-1004		HSALII 12CKT DP ASMM STR SLD PLUG - STR SLD PLUG	A	BLACK	A	BLACK	4	157	
111149-1005		HSALII 12CKT DP ASMM STR SLD PLUG - STR SLD PLUG	A	BLACK	A	BLACK	5	197	



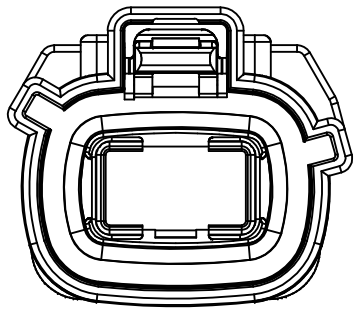
COMPONENT	MATERIAL	FINISH
CABLE	PVC JACKET - BLACK	NA
TERMINALS	COPPER ALLOY	AU + SN PLATED
HOUSINGS	SPS/PAA 20% GLASS FILLED	NA
STRAIN RELIEF	PVC - BLACK	NA
SHIELDING	COPPER ALLOY	NI PLATED



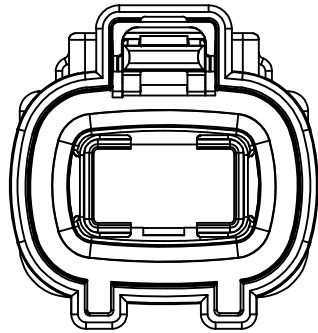
- NOTES:
1. MATERIAL: SEE CHART
 2. FINISH: SEE CHART
 3. PACKAGING SPECIFICATION: PK-111149-001
 4. LEAD FREE, NO RoHS EXEMPTIONS.
 5. IDENTIFICATION LABEL: (2 WRAPS MIN) MUST DISPLAY LOGO, SUPPLIER PART NUMBER, CUSTOMER PART NUMBER (IF AVAILABEL), LENGTH (M), DATE CODE (YYYYMMDD-HHMM).
 6. CONTINUITY AND HIPOT TESTS TO BE PERFORMED ON ALL HARNESSSES.
 7. ENVIRONMENTAL IN ACCORDANCE WITH R345247, IP67 (-40°C TO 105°C)

LABEL FORMAT

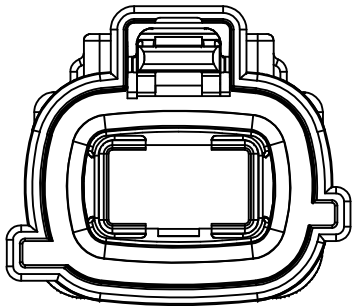
INITIAL RELEASE EC NO. CP02014-0959 DRAWING NO. 2013/08/24 APPROVED BY CCOX DATE 2013/08/27	QUALITY SYMBOLS ▽=0 ▽=0	GENERAL TOLERANCES (UNLESS SPECIFIED) mm INCH 4 PLACES +--- ±.0002 3 PLACES +--- ±.005 2 PLACES ±0.13 ±.01 1 PLACE ±0.25 ±--- ANGULAR ±1/2°	DIMENSION STYLE MM/IN	SCALE 3:1	DESIGN UNITS METRIC	THIRD ANGLE PROJECTION	
	DRAWN BY CCOX	DATE 2011/08/15	CHECKED BY CCOX	DATE 2013/08/27	TITLE HSALII 12CKT DP ASSM STRAIGHT SEALED PLUG TO STRAIGHT SEALED PLUG		
	APPROVED BY 			DATE 2013/08/27	MATERIAL NO. RSD-111149-001 DOCUMENT NO. RSD-111149-001		
	DRAFT WHERE APPLICABLE MUST REMAIN WITHIN DIMENSIONS			SEE CHART THIS DRAWING CONTAINS INFORMATION THAT IS PROPRIETARY TO MOLEX INCORPORATED AND SHOULD NOT BE USED WITHOUT WRITTEN PERMISSION			



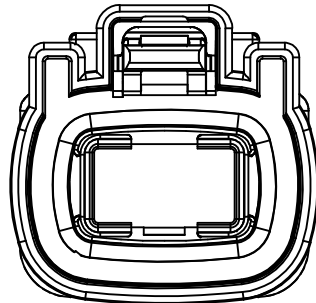
POL A
COLOR: BLACK



POL B
COLOR: GRAY



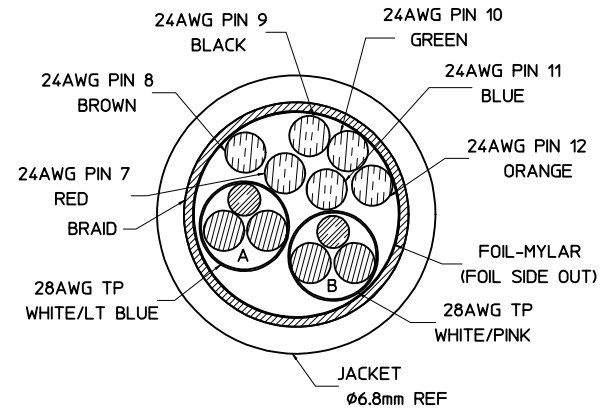
POL C
COLOR: BROWN



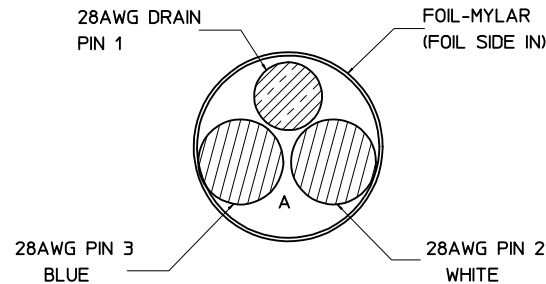
POL D
COLOR: GREEN

WIRING DIAGRAM

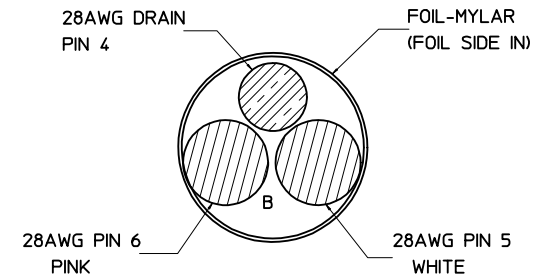
END 1	COLOR	DESCRIPTION	END 2	DESCRIPTION
PIN 1	NA	AUX LANE SHIELD (DRAIN)	PIN 1	AUX LANE SHIELD (DRAIN)
PIN 2	WHITE	AUX -	PIN 2	AUX -
PIN 3	BLUE	AUX +	PIN 3	AUX +
PIN 4	NA	LANE 0 SHIELD (DRAIN)	PIN 4	LANE 0 SHIELD (DRAIN)
PIN 5	WHITE	LANE 0-	PIN 5	LANE 0-
PIN 6	PINK	LANE 0+	PIN 6	LANE 0+
PIN 7	RED	POWER 0	PIN 7	POWER 0
PIN 8	BROWN	HOT PLUG DETECT	PIN 8	HOT PLUG DETECT
PIN 9	BLACK	GROUND 0	PIN 9	GROUND 0
PIN 10	GREEN	GROUND 1	PIN 10	GROUND 1
PIN 11	BLUE	MONITOR DETECT	PIN 11	MONITOR DETECT
PIN 12	ORANGE	POWER 1	PIN 12	POWER 1
BRD + SHD	NA	BRAID TO SHIELD	SHELL	BRAID TO SHIELD



TWISTED PAIR - BLUE FOIL



TWISTED PAIR - GOLD FOIL



INITIAL RELEASE EC NO. CP02014-0569 2013/08/24 DRAWN BY: CCOX CHECKED BY: CCOX APPROVED BY: CCOX	QUALITY SYMBOLS ▽=0 ▽=0	GENERAL TOLERANCES (UNLESS SPECIFIED) <table border="1"> <thead> <tr> <th></th> <th>mm</th> <th>INCH</th> </tr> </thead> <tbody> <tr> <td>4 PLACES</td> <td>±.002</td> <td>±.0002</td> </tr> <tr> <td>3 PLACES</td> <td>±.005</td> <td>±.001</td> </tr> <tr> <td>2 PLACES</td> <td>±.013</td> <td>±.01</td> </tr> <tr> <td>1 PLACE</td> <td>±.025</td> <td>±.01</td> </tr> </tbody> </table>		mm	INCH	4 PLACES	±.002	±.0002	3 PLACES	±.005	±.001	2 PLACES	±.013	±.01	1 PLACE	±.025	±.01	DIMENSION STYLE MM/IN	SCALE 7:1	DESIGN UNITS METRIC	THIRD ANGLE PROJECTION
		mm	INCH																		
	4 PLACES	±.002	±.0002																		
	3 PLACES	±.005	±.001																		
2 PLACES	±.013	±.01																			
1 PLACE	±.025	±.01																			
MATERIAL NO. SEE CHART	DRAWN BY CCOX	DATE 2011/08/15	TITLE HSALII 12CKT DP ASSM STRAIGHT SEALED PLUG TO STRAIGHT SEALED PLUG	APPROVED BY CCOX	DATE 2013/08/27	MOLEX MOLEX INCORPORATED															
DRAFT WHERE APPLICABLE MUST REMAIN WITHIN DIMENSIONS	DOCUMENT NO. RSD-111149-001	SHEET NO. 2 OF 2	THIS DRAWING CONTAINS INFORMATION THAT IS PROPRIETARY TO MOLEX INCORPORATED AND SHOULD NOT BE USED WITHOUT WRITTEN PERMISSION																		