

1SNK900605R0000 ✓ ACTIVE

ENTRELEC | ENTRELEC HTP600

TE Internal #: 1SNK900605R0000

Terminal Block & Strip Marking Accessories, Label Holder, Dark Gray, -55 – 110 °C [-67 – 230 °F], UL 94V-0, ENTRELEC HTP600

[View on TE.com >](#)



Connectors > Terminal Blocks & Strips > Terminal Block & Strip Accessories > Terminal Block & Strip Marking Accessories



Marking Product Type: **Label Holder**

Primary Product Color: **Dark Gray**

Operating Temperature Range: **-55 – 110 °C [-67 – 230 °F]**

UL Flammability Rating: **UL 94V-0**

Features

Product Type Features

Marking Product Type	Label Holder
----------------------	--------------

Body Features

Product Weight	.6 g[.021 oz]
Primary Product Material	Polyamide
Primary Product Color	Dark Gray

Dimensions

Product Depth	29.5 mm
Product Width	10 mm[.394 in]
Product Length	30 mm[1.18 in]
Product Height	31.8 mm[1.25 in]

Usage Conditions

Installation Temperature Range	-5 – 40 °C[23 – 104 °F]
Operating Temperature Range	-55 – 110 °C[-67 – 230 °F]

Industry Standards

UL Flammability Rating	UL 94V-0
------------------------	----------

Product Compliance

[For compliance documentation, visit the product page on TE.com>](#)

EU RoHS Directive 2011/65/EU	Compliant
EU ELV Directive 2000/53/EC	Compliant
China RoHS 2 Directive MIIT Order No 32, 2016	No Restricted Materials Above Threshold
EU REACH Regulation (EC) No. 1907/2006	Current ECHA Candidate List: JAN 2023 (233) Candidate List Declared Against: JAN 2023 (233) Does not contain REACH SVHC
Halogen Content	Low Halogen - Br, Cl, F, I < 900 ppm per homogenous material. Also BFR/CFR/PVC Free
Solder Process Capability	Not reviewed for solder process capability

Product Compliance Disclaimer

This information is provided based on reasonable inquiry of our suppliers and represents our current actual knowledge based on the information they provided. This information is subject to change. The part numbers that TE has identified as EU RoHS compliant have a maximum concentration of 0.1% by weight in homogenous materials for lead, hexavalent chromium, mercury, PBB, PBDE, DBP, BBP, DEHP, DIBP, and 0.01% for cadmium, or qualify for an exemption to these limits as defined in the Annexes of Directive 2011/65/EU (RoHS2). Finished electrical and electronic equipment products will be CE marked as required by Directive 2011/65/EU. Components may not be CE marked. Additionally, the part numbers that TE has identified as EU ELV compliant have a maximum concentration of 0.1% by weight in homogenous materials for lead, hexavalent chromium, and mercury, and 0.01% for cadmium, or qualify for an exemption to these limits as defined in the Annexes of Directive 2000/53/EC (ELV). Regarding the REACH Regulation, the information TE provides on SVHC in articles for this part number is based on the latest European Chemicals Agency (ECHA) 'Guidance on requirements for substances in articles' posted at this URL: <https://echa.europa.eu/guidance-documents/guidance-on-reach>

Compatible Parts



TE Part # 1SNK90002R0000
BAZ1



TE Part # 1SNK900102R0000
BAZH1



TE Part # 1SNK900633R0000
MCLH-YL



TE Part # 1SNA235158R0100
RCPEAD-TT



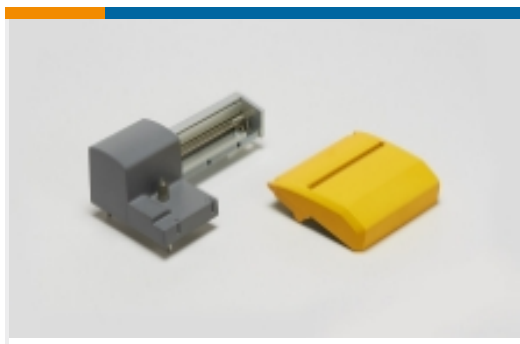
TE Part # 1SNK90001R0000
BAM4



TE Part # 1SNK900630R0000
MCLH

TE Part # 1SNA399726R0700
EPR2

Also in the Series | ENTRELEC HTP600



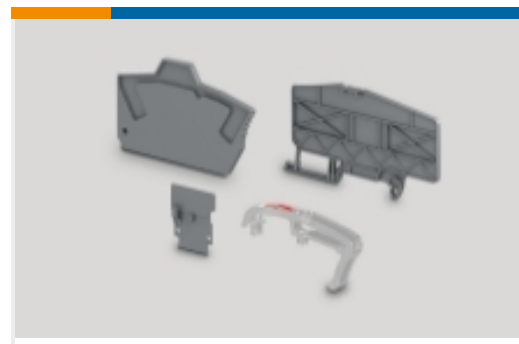
Printer Accessories(13)



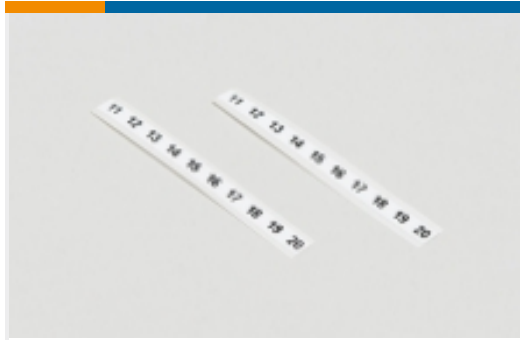
Printer Ribbons(4)



Printers(1)



Terminal Block & Strip Insulating Accessories(3)



Terminal Block & Strip Marking Accessories(115)

Customers Also Bought



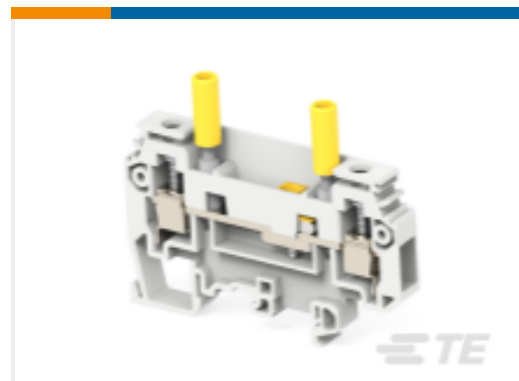
TE Part #1SNK505010R0000
ZS4



TE Part #1SNK505150R0000
ZS4-PE



TE Part #1SNK900624R0000
KCO



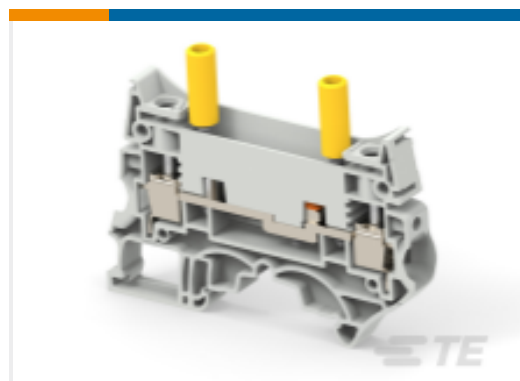
TE Part #1SNA115971R1000
M6/8.ST1.IP20



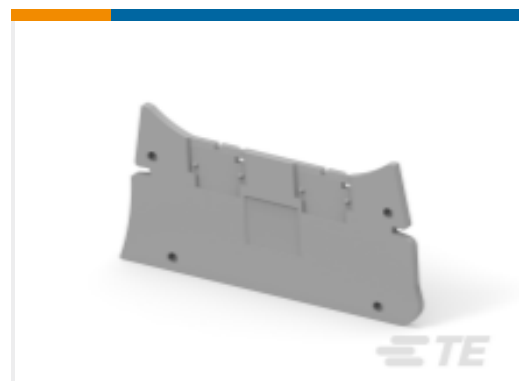
TE Part #1SNA400711R0600
PC8-R1



TE Part #1SNK505210R0000
ZS4-D2



TE Part #1SNK508311R0000
ZS10-ST-T4



TE Part #1SNK508910R0000
ES10-ST



TE Part #1SNK805714R0000
CDS4



TE Part #1SNK908902R0000
JB8-2-R1

Documents



CAD Files

3D PDF

3D

Customer View Model

[ENG_CVM_CVM_1SNK900605R0000_B.2d_dxf.zip](#)

English

Customer View Model

[ENG_CVM_CVM_1SNK900605R0000_B.3d_igs.zip](#)

English

Customer View Model

[ENG_CVM_CVM_1SNK900605R0000_B.3d_stp.zip](#)

English

By downloading the CAD file I accept and agree to the [Terms and Conditions](#) of use.

Datasheets & Catalog Pages

[ENTRELEC Terminal Block - Master Catalog](#)

[ENTRELEC Terminal Block - Master Catalog](#)

English

LH

English

[SNK SERIES TERMINAL BLOCKS](#)

English

[ENTRELEC Terminal Blocks Catalogue \(RUS\)](#)