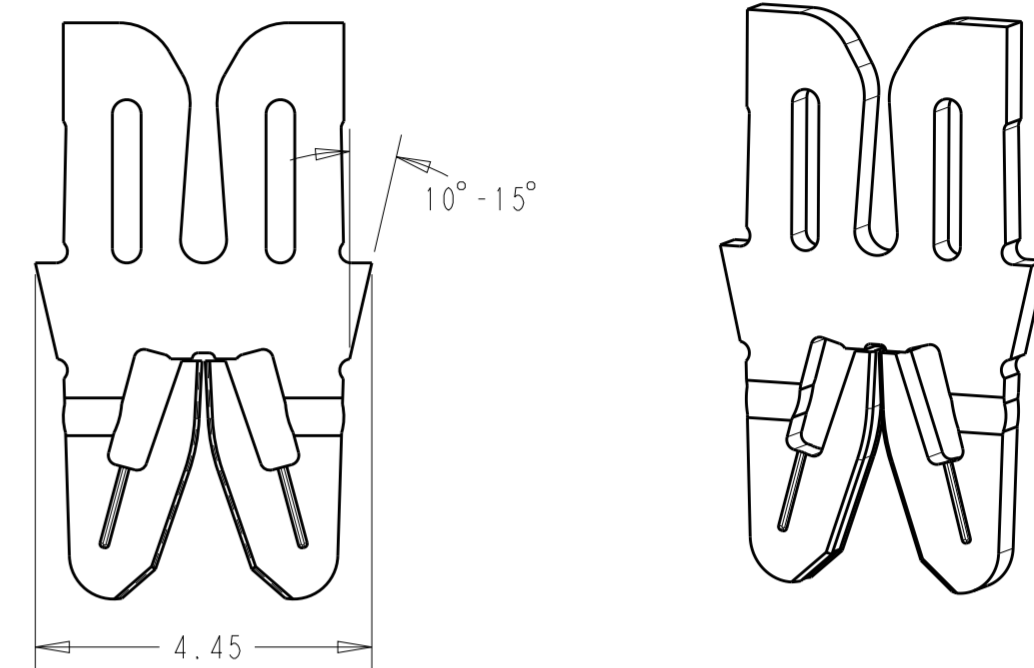
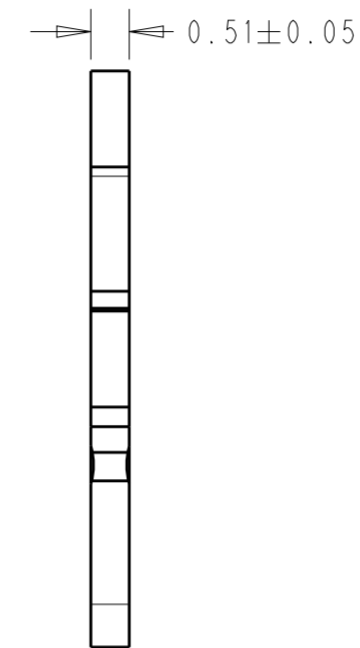
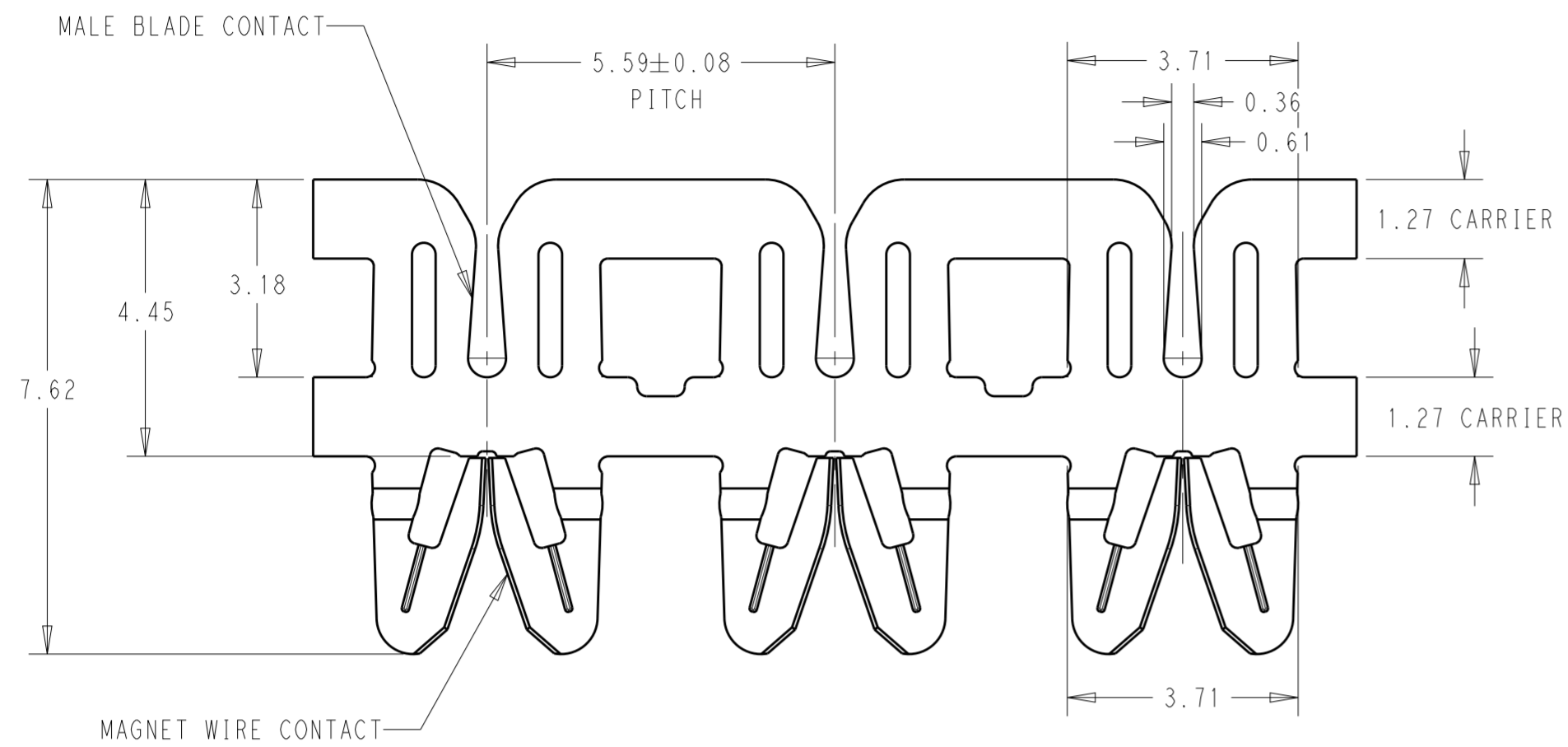
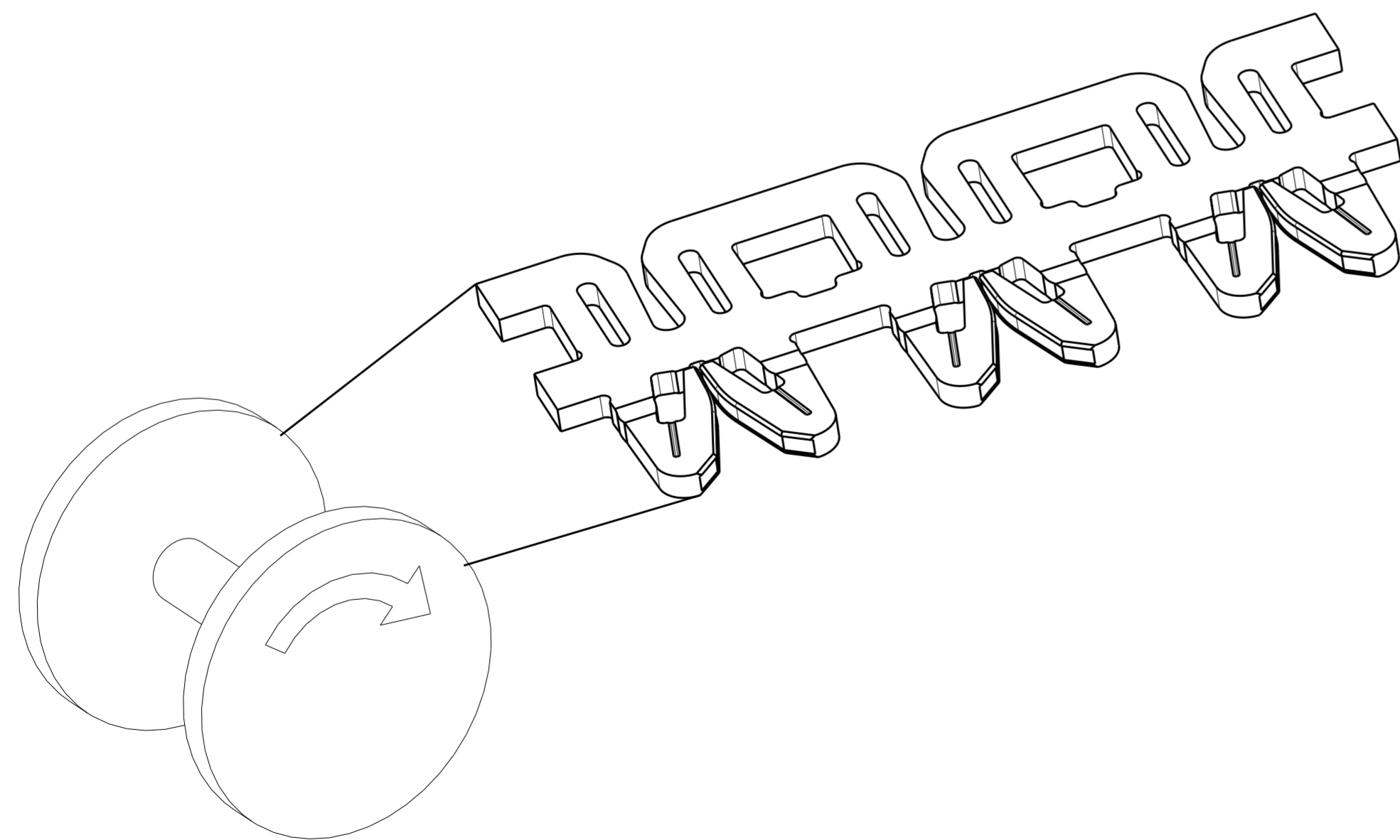


P	LTR	DESCRIPTION	DATE	DWN	APVD
A		RELEASE TO PRODUCTION	23JUN2020	JA	TD



LOOSE PIECE CONFIGURATION  
4-2348500-(-)

TERMINALS TO UNWIND FROM REELS AS SHOWN  
2348500-(-)



NOTES:

- 1 SPECIFICATION  
0.45-1.00mm MAGNET ALUMINUM WIRE.  
MALE BLADE 0.50mm THICK BRASS.
- 2 POCKET RECOMMENDATION: #1601426
- 3 TERMINAL APPLICATION TO COMPLY WITH TE CONNECTIVITY SPECIFICATION 114-13166 FIGURE 11.

2348500-2  
Part Number

THIS DRAWING IS A CONTROLLED DOCUMENT.		DWN 01APR2019 JUSTIN HUANG	TE Connectivity													
DIMENSIONS: mm		CHK 01APR2019 JUSTIN HUANG														
TOLERANCES UNLESS OTHERWISE SPECIFIED:		APVD 01APR2019 SENTHIL KUMAR	NAME WIRE TO BLADE, STD, HIGH CARRIER SIAMEZE TERMINAL FOR AL WIRE													
<table border="0"> <tr> <td>0 PLC</td> <td>±</td> </tr> <tr> <td>1 PLC</td> <td>±</td> </tr> <tr> <td>2 PLC</td> <td>±0.13</td> </tr> <tr> <td>3 PLC</td> <td>±</td> </tr> <tr> <td>4 PLC</td> <td>±</td> </tr> <tr> <td>ANGLES</td> <td>±2°</td> </tr> </table>		0 PLC	±	1 PLC	±	2 PLC	±0.13	3 PLC	±	4 PLC	±	ANGLES	±2°	PRODUCT SPEC 108-2085	SIZE A2	CAGE CODE 00779
0 PLC	±															
1 PLC	±															
2 PLC	±0.13															
3 PLC	±															
4 PLC	±															
ANGLES	±2°															
MATERIAL BRASS	FINISH POST TIN PLATE	APPLIC. SPEC 3	DRAWING NO. C-2348500	RESTRICTED TO -												
CUSTOMER DRAWING		WEIGHT -	SCALE 10:1	SHEET 1 OF 1												