

6

5

4

3

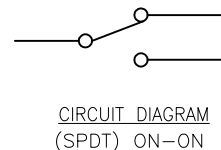
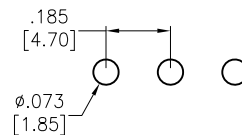
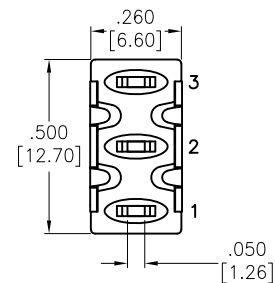
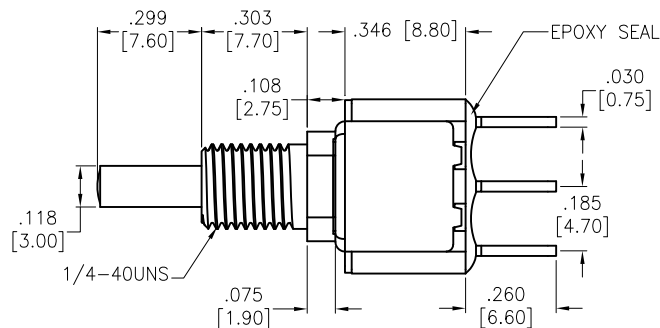
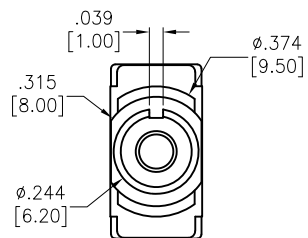
2

1

APPROVED: \_\_\_\_\_

DATE: \_\_\_\_\_ TITLE: \_\_\_\_\_

Rev	AWO #	Description	Date	Appr
-		RELEASED	3/4/21	



SPECIFICATIONS:

Material:

Movable Contact: Copper Alloy, Silver Plated

Terminal: Copper Alloy, Silver Plated

Electrical:

Rating:

6 Amps with resistive load @ 125VAC or 28VDC

3 Amps with resistive load @ 250VAC

Contact resistance: 10 mΩ max

Insulation resistance: 1,000 Mohms min

Dielectric withstanding voltage: 1,500V RMS @Sea level

Temperature Rating:

Operating temperature: -30°C to +85°C

Environmental:

Lead free, RoHS compliant



UNLESS OTHERWISE SPECIFIED ALL DIMENSIONS ARE INCHES [MM] TOLERANCES: EXCEPT AS NOTED INCHES HOLES .X ± .10 Ø.X ± .10 .XX ± .020 Ø.XX ± .015 .XXX ± .015 Ø.XXX ± .010		<b>ADAM TECH</b> 909 Rahway Avenue, Union, NJ 07083 Phone: 908-687-5000 Fax: 908-687-5710	
APPROVALS		DATE	
DRAWN	WX	3/4/21	
CHECKED	AC	3/4/21	
APPROVED			
TITLE PUSHBUTTON SWITCH, ON-ON, SPDT COPPER ALLOY SILVER PLATED, PCB TYPE			
SIZE X	PART NO. SW-PB8-AA00A2QE-3	REV. -	
REF: S00198T	SCALE: NTS	SHEET 1 OF 1	

6

5

4

3

2

1