

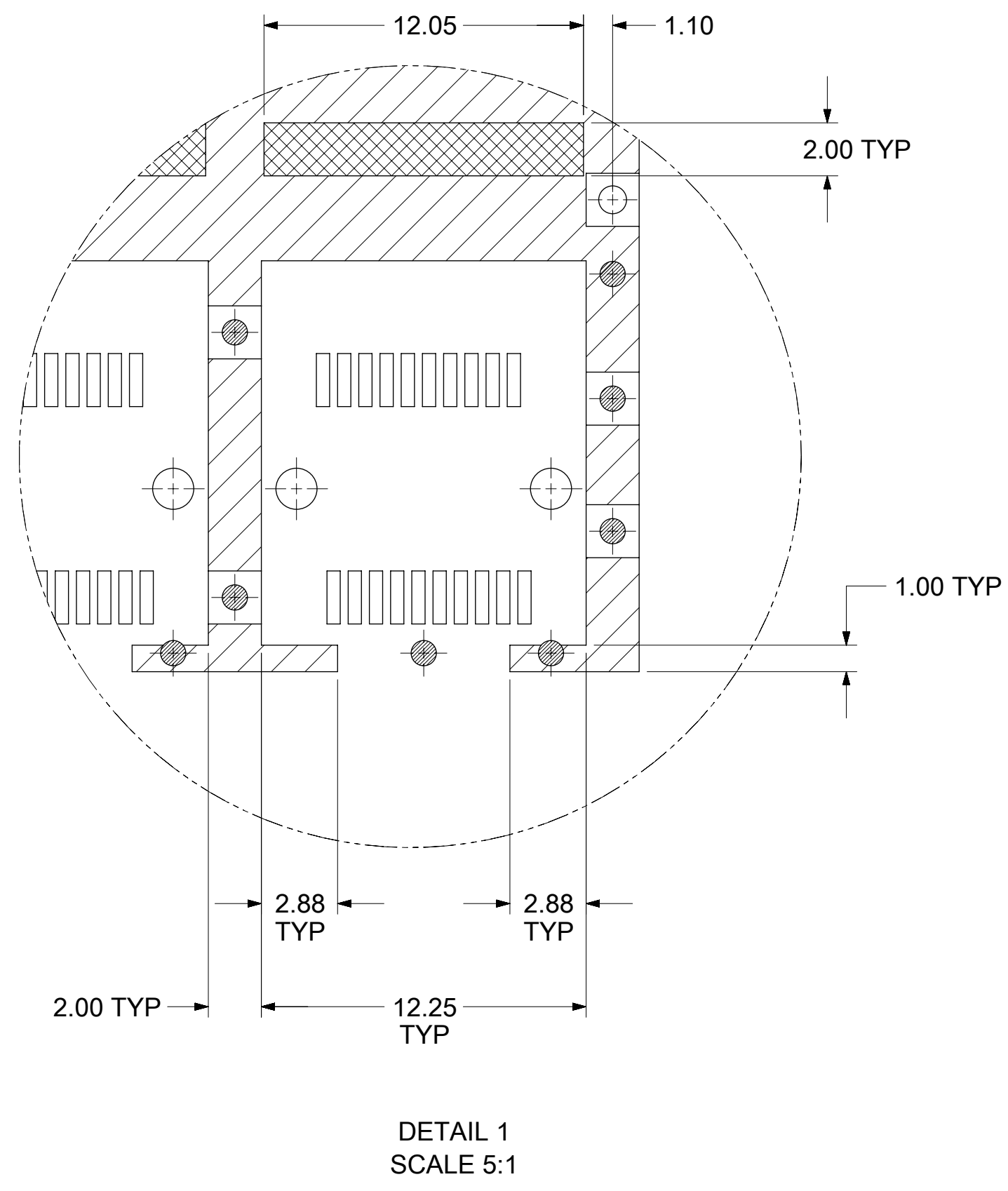
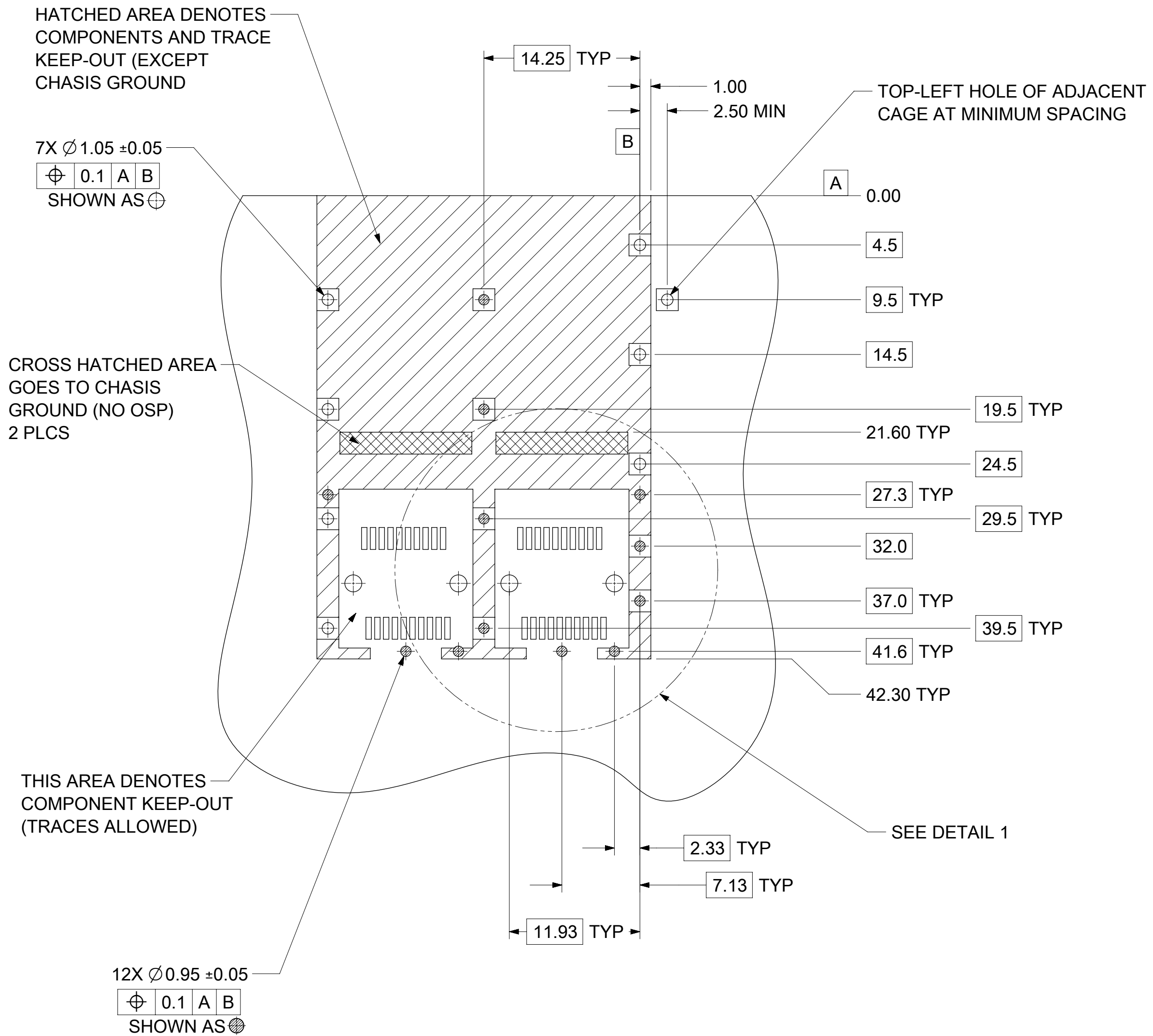
PN/DATE CODE TO BE PRINTED ON THE BACK OF COMPLETED CAGE ASSEMBLY APPROXIMATELY AS SHOWN.

- NOTES:
- MATERIAL:
CAGE: 0.25mm THICK COPPER ALLOY, NICKEL PLATED.
SPRING FINGERS: STAINLESS STEEL
 - PRESS FIT LEGS 3.05mm LONG
 - PORTS ARE DESIGNED FOR SFP+ TRANSCEIVERS AND ARE COMPATIBLE WITH SFP TRANSCEIVERS. THE TOP SURFACE OF THE MODULE MUST BE FLAT (NO PRODUCT LABEL RECESS) AND THERMALLY CONDUCTIVE TO FUNCTION OPTIMALLY.
 - WELD SPOT MAY SHOW SLIGHT MATERIAL DISCOLORATION.
 - NO RoHS EXEMPTIONS.

WEEK/YEAR DATE CODE TABLE	
WW	WEEK OF THE YEAR 01 THRU 52 (EXAMPLE:01= FIRST WEEK OF YEAR 52=LAST WEEK OF YEAR)
YY	22, 23, 24 ETC. EXAMPLE: YEAR 2022 = 22

FUNCTIONAL SYMBOLS $\nabla_A = 0$ $\nabla_C = 0$ $\nabla_P = 0$	THIS DRAWING CONTAINS INFORMATION THAT IS PROPRIETARY TO MOLEX ELECTRONIC TECHNOLOGIES, LLC AND SHOULD NOT BE USED WITHOUT WRITTEN PERMISSION	CURRENT REV DESC: SEE REVISION TABLE					
	DIMENSION UNITS: mm SCALE: 2.5:1	GENERAL TOLERANCES (UNLESS SPECIFIED)					ZSFP+ 1X2 CAGE, 3.05 MM PRESS FIT TYPE, W/ SUS EMI SPRING FINGER & UNDERBELLY GASKET
	DIVISIONAL SYMBOLS 4 PLACES ± 3 PLACES ± 2 PLACES ± 0.13 1 PLACE ± 0.25 0 PLACES ±	ANGULAR TOL ± 1.0°	EC NO: 707262	2022/04/20	PRODUCT CUSTOMER DRAWING		
	DRAFT WHERE APPLICABLE MUST REMAIN WITHIN DIMENSIONS		DRWN: ABHILT2	2022/04/20	DOCUMENT NUMBER	DOC TYPE	DOC PART
THIRD ANGLE PROJECTION		CHK'D: TKUMARKC	2022/05/26	111118220	PSD	ASY	A
DRAWING		APPR: SCHIEN	2022/05/27	MATERIAL NUMBER	CUSTOMER	SHEET NUMBER	
C-SIZE		INITIAL REVISION:		111111		1 OF 5	

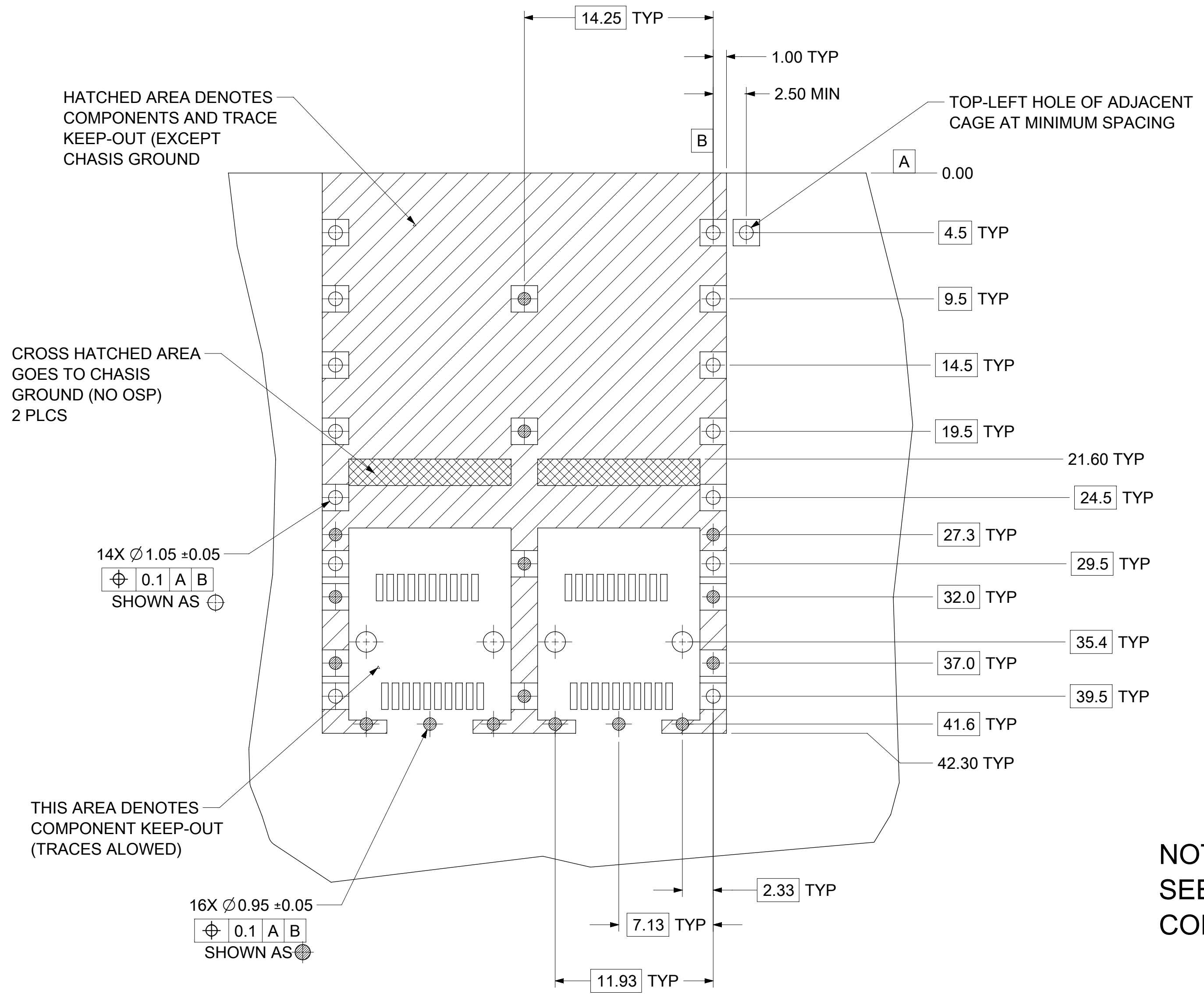
PCB LAYOUT - SINGLE SIDE ONLY



- NOTES:
- PADS AND VIAS CONNECT TO CHASSIS GROUND
RECOMMEND PADS TO BE 2.00mm SQUARE
 - RECOMMENDED THRU HOLE PLATING INCLUDES HASL, OSP, OR IMMERSION (GOLD, SILVER, OR TIN)
 - CONNECTOR PAD LAYOUT PER SFP+ MSA WILL ACCOMODATE MOLEX CONNECTOR SERIES 170382 OR EQUIVALENT
 - SPACING BETWEEN PORTS IS 14.25mm
 - 1.57mm MINIMUM PCB THICKNESS FOR SINGLE SIDED USE.

THIS DRAWING CONTAINS INFORMATION THAT IS PROPRIETARY TO MOLEX ELECTRONIC TECHNOLOGIES, LLC AND SHOULD NOT BE USED WITHOUT WRITTEN PERMISSION										
FUNCTIONAL SYMBOLS	DIMENSION UNITS	SCALE	CURRENT REV DESC: SEE REVISION TABLE							
$\nabla_A = 0$	mm	1:1	EC NO: 707262 DRWN: ABHILT2 2022/04/20 CHK'D: TKUMARKC 2022/05/26 APPR: SCHIEN 2022/05/27 INITIAL REVISION: DRWN: ABHILT2 2022/04/20 APPR: SCHIEN 2022/05/27							
$\nabla_C = 0$	GENERAL TOLERANCES (UNLESS SPECIFIED)									
$\nabla_P = 0$	ANGULAR TOL $\pm 1.0^\circ$									
DIVISIONAL SYMBOLS	4 PLACES \pm		PRODUCT CUSTOMER DRAWING				DOCUMENT NUMBER	DOC TYPE	DOC PART	REVISION
	3 PLACES \pm		111118220				PSD	ASY	A	
	2 PLACES ± 0.13		MATERIAL NUMBER				CUSTOMER	SHEET NUMBER		
	1 PLACE ± 0.25		111118220					2 OF 5		
	0 PLACES \pm		DRAFT WHERE APPLICABLE MUST REMAIN WITHIN DIMENSIONS				THIRD ANGLE PROJECTION	DRAWING	SERIES	
			C-SIZE				111111			

PCB LAYOUT FOR BELLY TO BELLY MOUNTING



HATCHED AREA DENOTES COMPONENTS AND TRACE KEEP-OUT (EXCEPT CHASSIS GROUND)

CROSS HATCHED AREA GOES TO CHASSIS GROUND (NO OSP) 2 PLCS

14X Ø1.05 ±0.05
 0.1 A B
 SHOWN AS ⊕

THIS AREA DENOTES COMPONENT KEEP-OUT (TRACES ALLOWED)

16X Ø0.95 ±0.05
 0.1 A B
 SHOWN AS ⊙

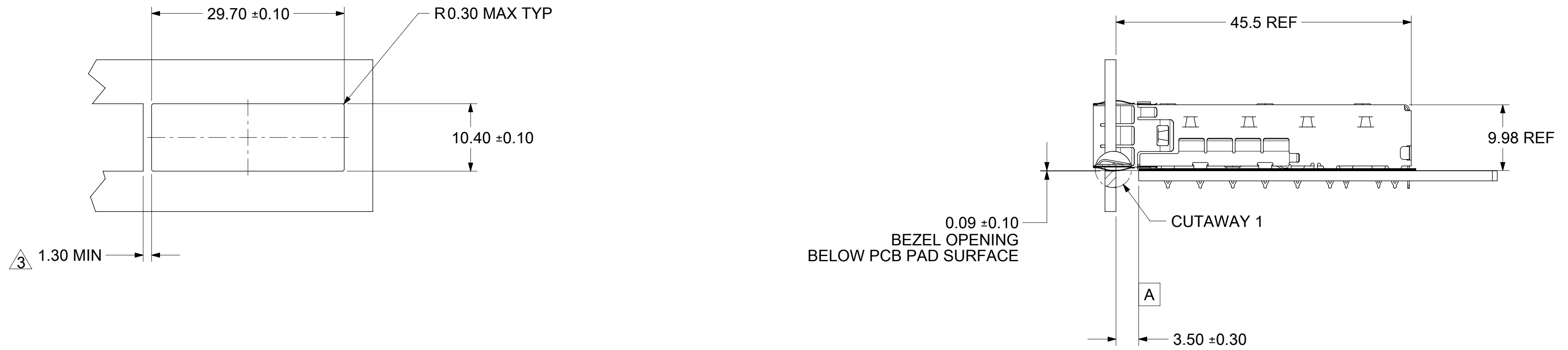
TOP-LEFT HOLE OF ADJACENT CAGE AT MINIMUM SPACING

NOTE:
 SEE SHEET 2 FOR HOST CONNECTOR DETAIL

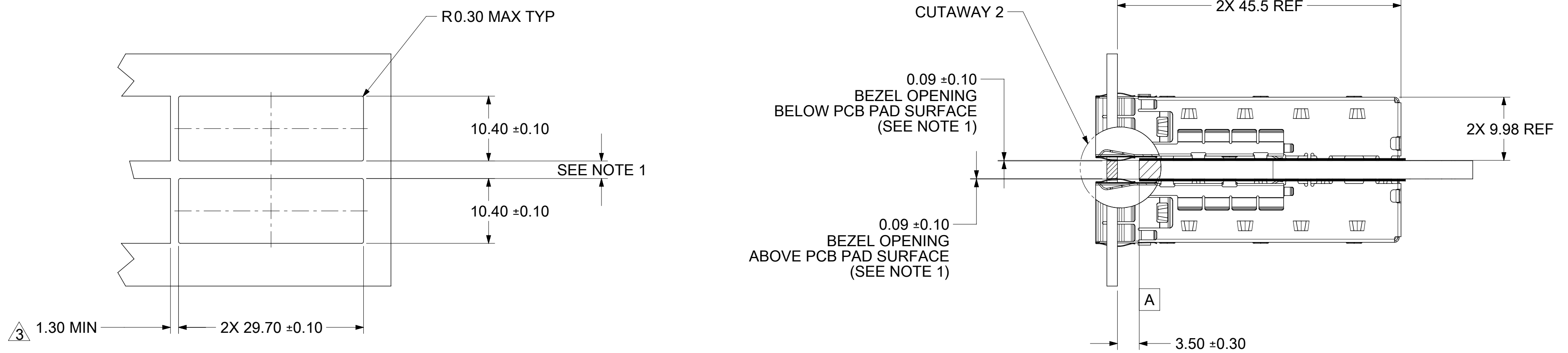
- NOTES:**
1. PADS AND VIAS CONNECT TO CHASSIS GROUND
 RECOMMEND PADS TO BE 2.00mm SQUARE
 2. RECOMMENDED THRU HOLE PLATING INCLUDES HASL, OSP, OR IMMERSION (GOLD, SILVER, OR TIN)
 3. CONNECTOR PAD LAYOUT PER SFP+ MSA WILL ACCOMODATE MOLEX CONNECTOR SERIES 170382 OR EQUIVALENT
 4. SPACING BETWEEN PORTS IS 14.25mm
 5. 3.00mm MINIMUM PCB THICKNESS FOR BELLY TO BELLY USE.

FUNCTIONAL SYMBOLS		THIS DRAWING CONTAINS INFORMATION THAT IS PROPRIETARY TO MOLEX ELECTRONIC TECHNOLOGIES, LLC AND SHOULD NOT BE USED WITHOUT WRITTEN PERMISSION		CURRENT REV DESC: SEE REVISION TABLE	
FA = 0	mm	SCALE	4:1	molex ZSFP+ 1X2 CAGE, 3.05 MM PRESS FIT TYPE, W/ SUS EMI SPRING FINGER & UNDERBELLY GASKET PRODUCT CUSTOMER DRAWING	
FC = 0	GENERAL TOLERANCES (UNLESS SPECIFIED)				
FP = 0	ANGULAR TOL ± 1.0°				
DIVISIONAL SYMBOLS		4 PLACES ±	EC NO: 707262	2022/04/20	
		3 PLACES ±	DRWN: ABHILT2	2022/05/26	
		2 PLACES ± 0.13	CHK'D: TKUMARKC	2022/05/27	
		1 PLACE ± 0.25	APPR: SCHIEN	2022/05/27	
		0 PLACES ±	INITIAL REVISION:		
DRAFT WHERE APPLICABLE MUST REMAIN WITHIN DIMENSIONS		THIRD ANGLE PROJECTION	DRWN: ABHILT2	2022/04/20	
		DRAWING	APPR: SCHIEN	2022/05/27	
		C-SIZE	SERIES	111111	
DOCUMENT STATUS		P1	RELEASE DATE	2022/05/27 10:20:25	
DOCUMENT NUMBER		111118220		DOC TYPE	PSD ASY A
MATERIAL NUMBER		111118220		DOC PART	ASSEMBLY
CUSTOMER				SHEET NUMBER	3 OF 5

BEZEL AND BOARD POSITION DIMENSIONS FOR SINGLE SIDE MOUNTING (SPRING FINGER)



BEZEL AND BOARD POSITION DIMENSIONS FOR BELLY TO BELLY MOUNTING (SPRING FINGER)


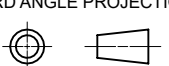


- NOTE:**
1. PCB THICKNESS VARIATION MUST BE CONSIDERED WHEN DETERMINING BEZEL OPENING SIZE AND LOCATION.
 2. CAGE LEG STANDOFF WILL PIERCE BELLY GASKET WHEN PROPERLY PRESSED INTO PCB.
 3. THIS DIMENSION IS FOR REF ONLY. USER CAN MODIFY IT DEPENDS ON APPLICATION. HOLE OF ADJACENT CAGE ON PCB LAYOUT VARIES ON MODIFICATION.

FUNCTIONAL SYMBOLS	THIS DRAWING CONTAINS INFORMATION THAT IS PROPRIETARY TO MOLEX ELECTRONIC TECHNOLOGIES, LLC AND SHOULD NOT BE USED WITHOUT WRITTEN PERMISSION										
$\nabla_A = 0$	DIMENSION UNITS	SCALE	CURRENT REV DESC: SEE REVISION TABLE								
$\nabla_C = 0$	mm	2:1	molex								
$\nabla_P = 0$	GENERAL TOLERANCES (UNLESS SPECIFIED)										
DIVISIONAL SYMBOLS	ANGULAR TOL	± 1.0°	EC NO: 707262		2022/04/20		ZSFP+ 1X2 CAGE, 3.05 MM PRESS FIT TYPE, W/ SUS EMI SPRING FINGER & UNDERBELLY GASKET				
	4 PLACES	±	DRWN: ABHILT2		2022/05/26						
	3 PLACES	±	CHK'D: TKUMARKC		2022/05/27		PRODUCT CUSTOMER DRAWING				
	2 PLACES	± 0.13	APPR: SCHIEN		2022/05/27		DOCUMENT NUMBER		DOC TYPE	DOC PART	REVISION
	1 PLACE	± 0.25	INITIAL REVISION:				111118220		PSD	ASY	A
	0 PLACES	±	DRWN: ABHILT2		2022/04/20		MATERIAL NUMBER		CUSTOMER		SHEET NUMBER
	DRAFT WHERE APPLICABLE MUST REMAIN WITHIN DIMENSIONS		THIRD ANGLE PROJECTION		DRAWING		SERIES		111111		4 OF 5

H
G
F
E
D
C
B
A

REV	DATE	DESCRIPTION
A	2022/05/25	INITIAL RELEASE

FUNCTIONAL SYMBOLS	THIS DRAWING CONTAINS INFORMATION THAT IS PROPRIETARY TO MOLEX ELECTRONIC TECHNOLOGIES, LLC AND SHOULD NOT BE USED WITHOUT WRITTEN PERMISSION												
	DIMENSION UNITS	SCALE	CURRENT REV DESC: SEE REVISION TABLE										
$\frac{F}{A} = 0$	mm	1:1	EC NO: 707262 DRWN: ABHILT2 2022/04/20 CHK'D: TKUMARKC 2022/05/26 APPR: SCHIEN 2022/05/27									ZSFP+ 1X2 CAGE, 3.05 MM PRESS FIT TYPE, W/ SUS EMI SPRING FINGER & UNDERBELLY GASKET	
$\frac{F}{C} = 0$	GENERAL TOLERANCES (UNLESS SPECIFIED)									PRODUCT CUSTOMER DRAWING			
$\frac{F}{P} = 0$	ANGULAR TOL	$\pm 1.0^\circ$	INITIAL REVISION:							DOCUMENT NUMBER	DOC TYPE	DOC PART	REVISION
DIVISIONAL SYMBOLS	4 PLACES	\pm	DRWN: ABHILT2 2022/04/20							111118220	PSD	ASY	A
	3 PLACES	\pm	APPR: SCHIEN 2022/05/27										
	2 PLACES	± 0.13											
	1 PLACE	± 0.25											
	0 PLACES	\pm											
	DRAFT WHERE APPLICABLE MUST REMAIN WITHIN DIMENSIONS		THIRD ANGLE PROJECTION	DRAWING	SERIES	MATERIAL NUMBER	CUSTOMER	SHEET NUMBER					
				C-SIZE	111111	111118220		5 OF 5					