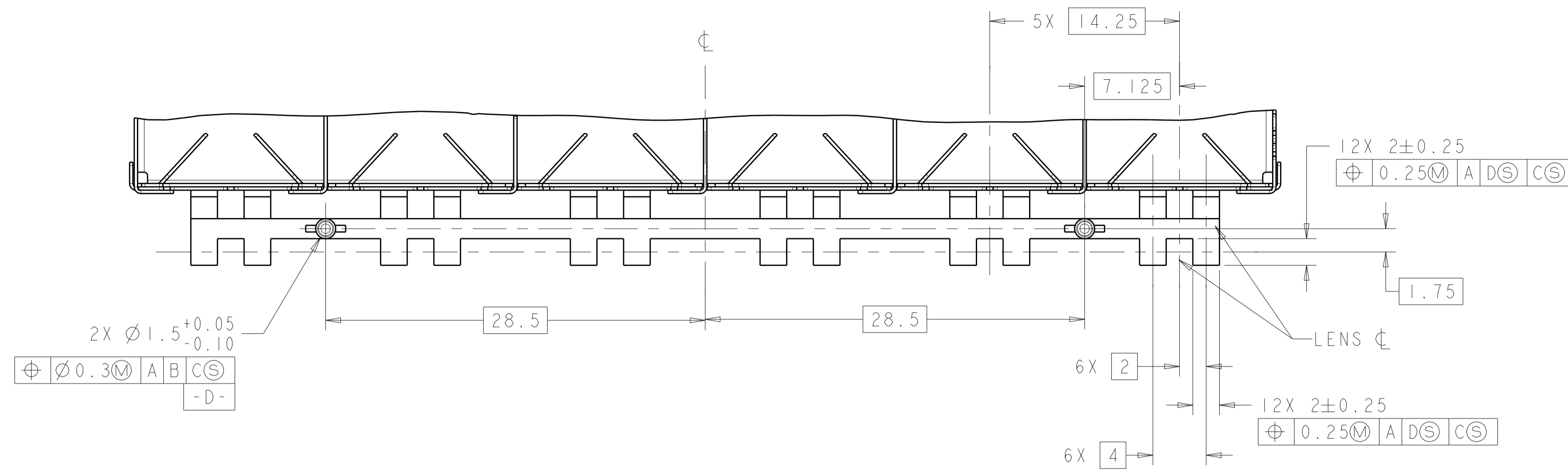
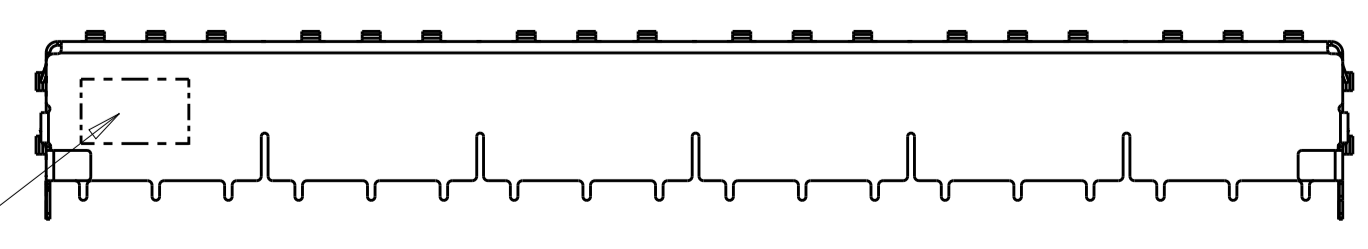
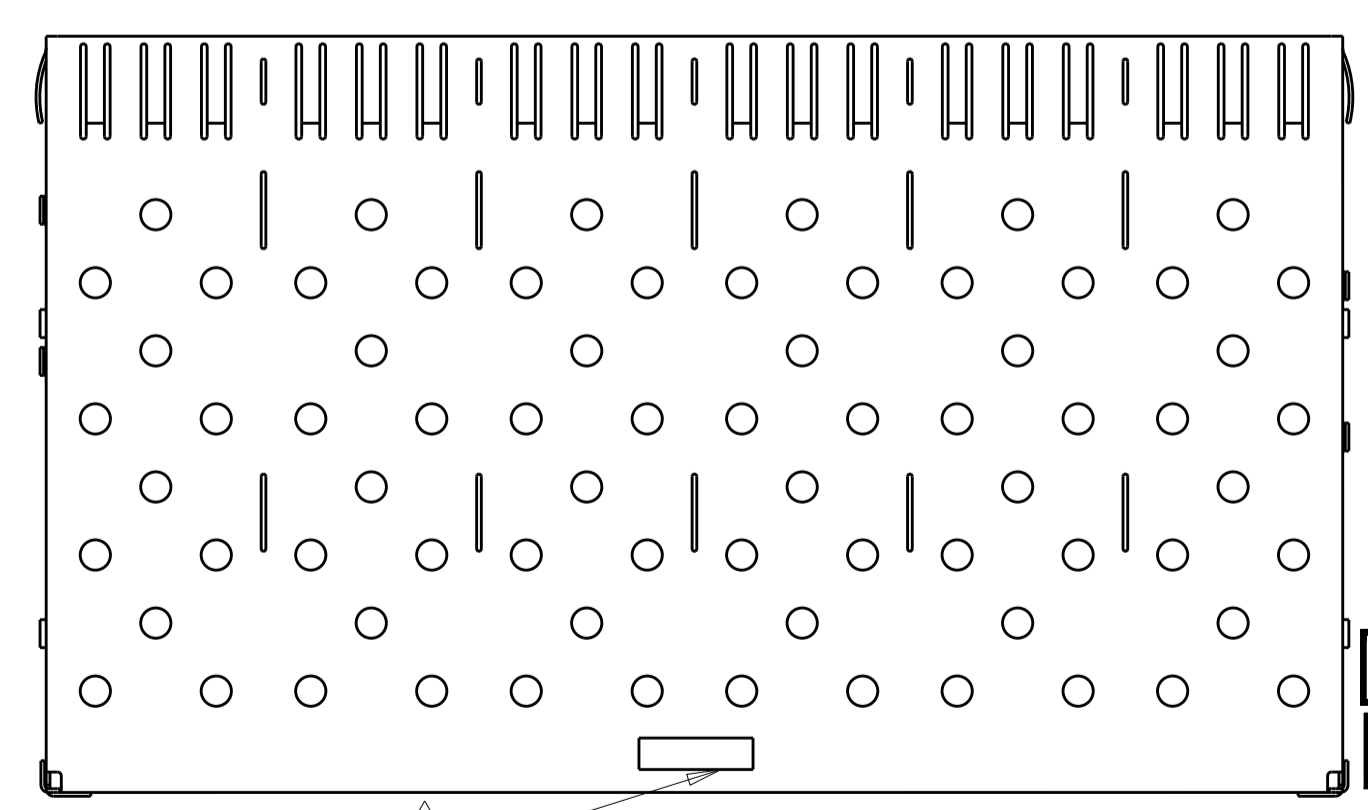
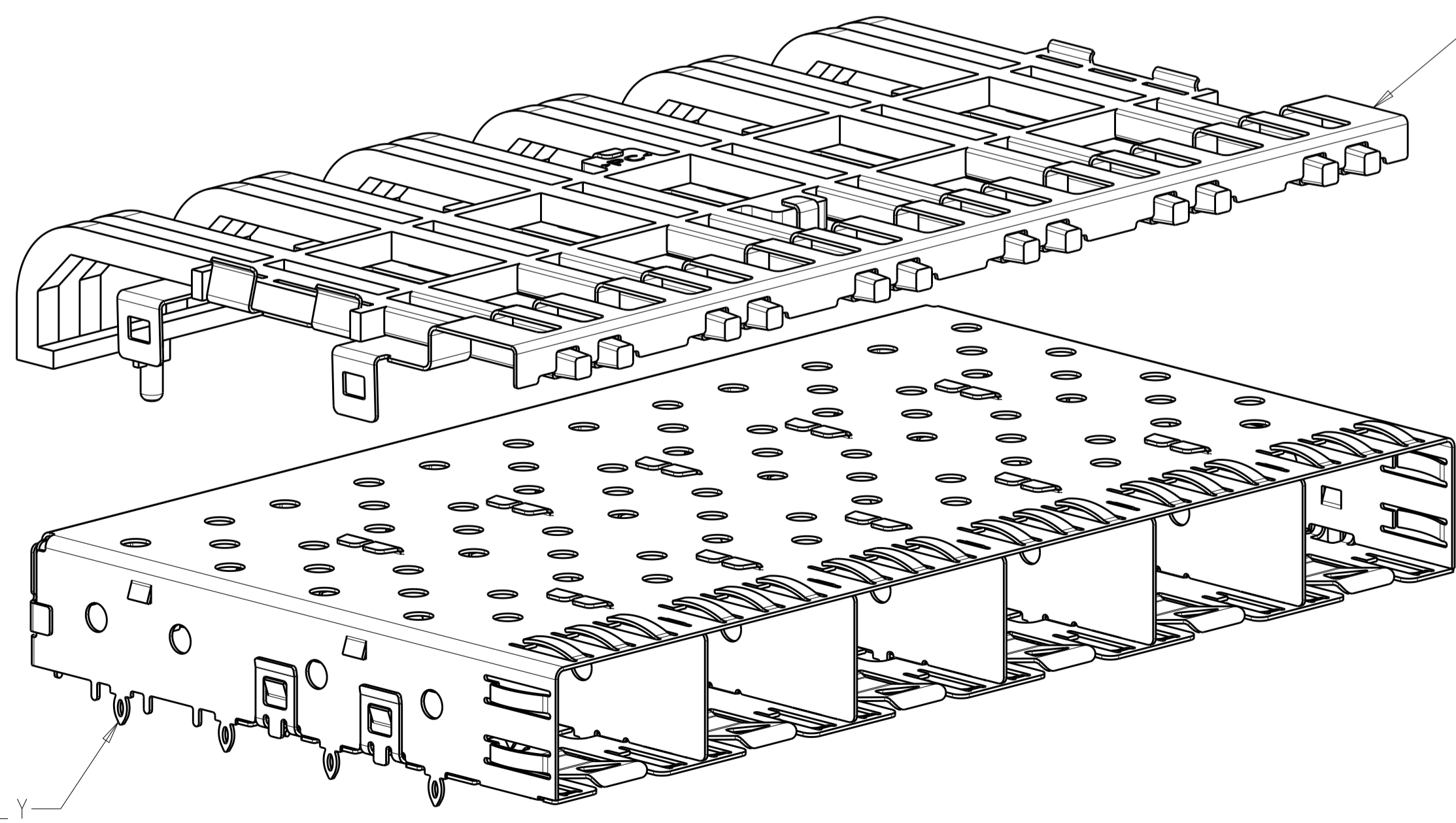
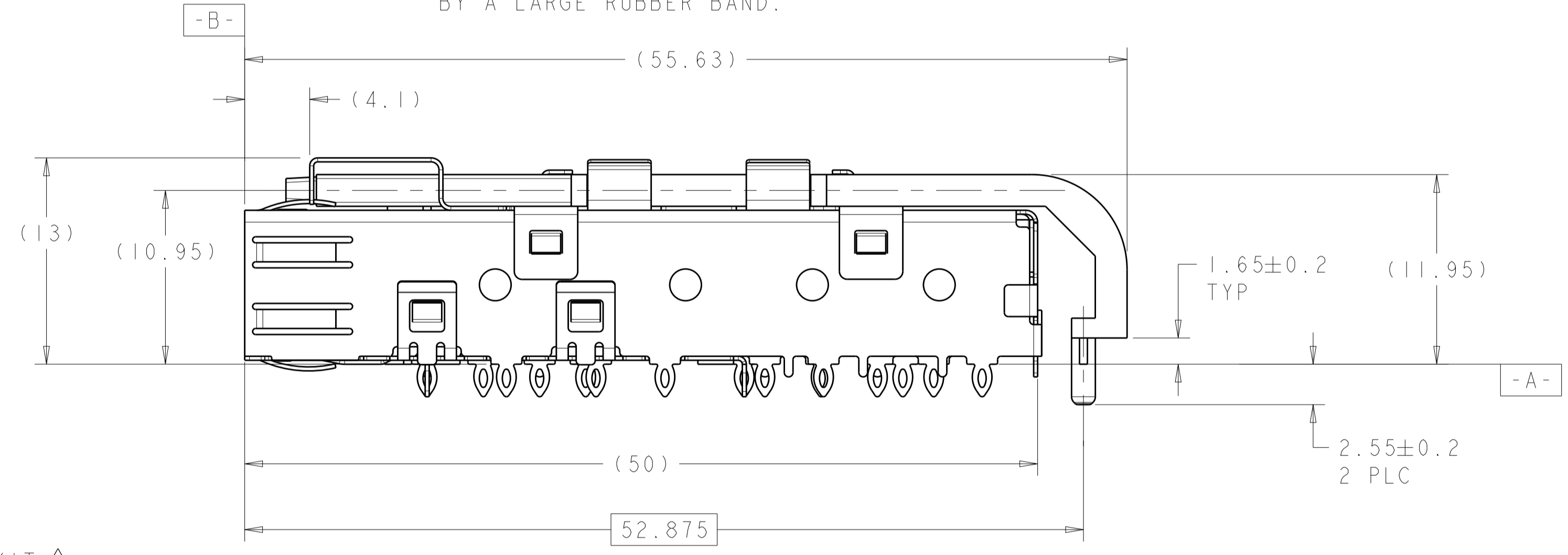
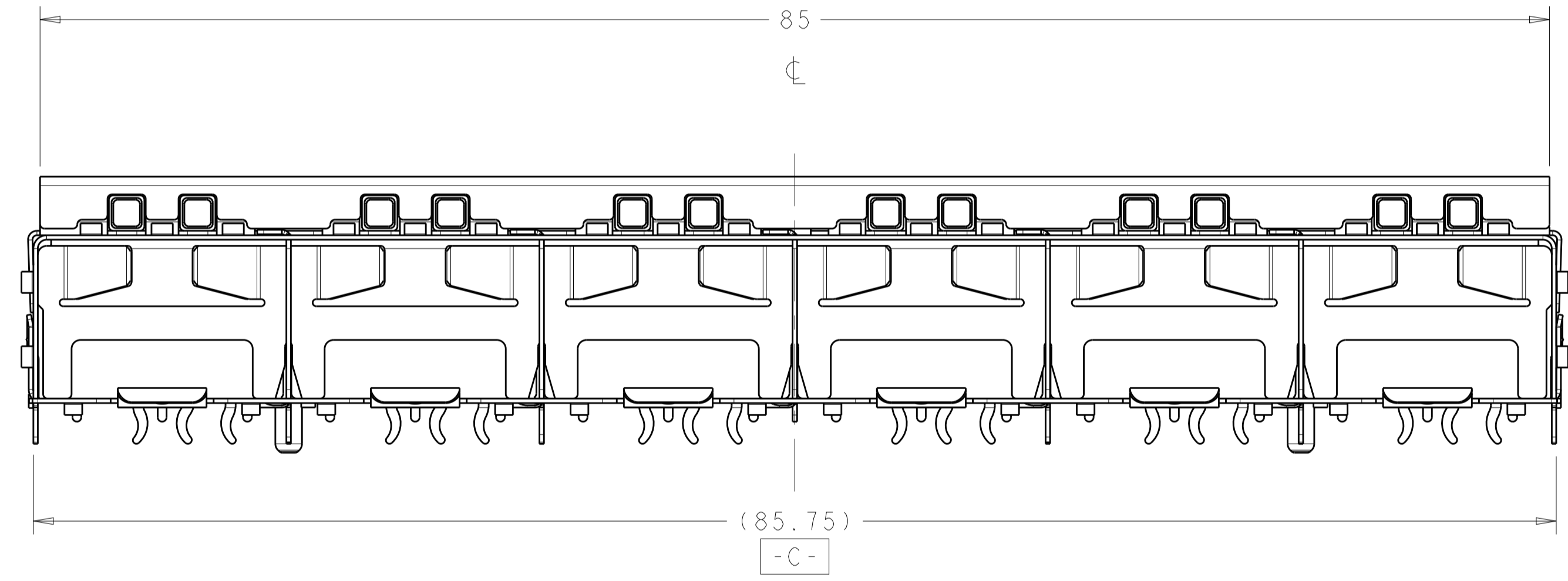


LOC	DIST	REVISIONS					
GP	00	P	LTN	DESCRIPTION	DATE	DWN	APVD
		E1		REVISED PER ECO-11-007052	06APR2011	JY	CW
		F		REVISED PER ECO-14-000886	20FEB2014	JW	SH
		F1		REVISED PER ECO-14-010419	11JUL2014	JW	SH
		G		REVISED PER ECO-15-013594	22SEP2015	JW	SH



- △ PADS AND VIAS CHASSIS GROUND
- △ DATUM AND BASIC DIMENSIONS ESTABLISHED BY CUSTOMER.
- △ LIGHT PIPE KIT WHICH IS SEPARATE FROM CAGE ASSEMBLY, KIT TO BE ATTACHED AFTER SEATING OF 1761015-1 ON PC BOARD.
- △ DATE CODE AND PART NUMBER IN APPROXIMATE AREA SHOWN LABEL ON CAGE ASSEMBLY WILL HAVE PART NUMBER 1761015-1 OR -3.
- 5. REFERENCE STYLE 1 ON APPLICATION SPECIFICATION 114-13165 FOR ADDITIONAL INFORMATION ON CAGE ASSEMBLIES WITH LIGHT PIPES.
- △ REFERENCE APPLICATION SPEC 114-13120, HOLE A, FOR RECOMMENDED DRILL HOLES DIAMETER AND PLATING THICKNESSES.
- △ REFERENCE APPLICATION SPEC 114-13120, HOLE B, FOR RECOMMENDED DRILL HOLES DIAMETER AND PLATING THICKNESSES.
- △ PATTERN REPEATS FOR EACH PORT. SPACING BETWEEN PORTS IS 14.25mm.
- △ MINIMUM PC BOARD THICKNESS = 1.50mm.
- △ COMPANY LOGO IN APPROXIMATE AREA SHOWN
- △ BOX WILL CONTAIN TRAYS OF CAGES AND TRAYS OF LIGHT PIPE ASSEMBLIES.
- △ BOX WILL CONTAIN TRAYS OF CAGES AND TRAYS OF LIGHT PIPE ASSEMBLIES. ONE TRAY OF CAGE AND ONE TRAY OF LIGHT PIPE ASSEMBLIES WILL BE HELD BY A LARGE RUBBER BAND.



SUPERSEDED BY:
1658939-4

SUPERSEDED BY:
1658939-3

1761013-3	1751015-3	△	1X6 ASSEMBLY	1658939-4
1761013-3	1751015-3	△	1X6 ASSEMBLY	1658939-3
1761013-1	1751015-1	△	1X6 ASSEMBLY	1658939-2
1761013-1	1751015-1	△	1X6 ASSEMBLY	1658939-1
LIGHT PIPE KIT	CAGE ASSEMBLY	PACKAGE	POSITION	PART NUMBER

THIS DRAWING IS A CONTROLLED DOCUMENT.

DIMENSIONS: mm

TOLERANCES UNLESS OTHERWISE SPECIFIED:

0 PLC	±0.1
1 PLC	±0.1
2 PLC	±0.10
3 PLC	±0.100
4 PLC	±0.100
ANGLES	±0.1°
FINISH	±0.1

MATERIAL: -

Customer Drawing

DWN: M.E. CONNER 21NOV2003
CHK: M.J. PHILLIPS 21NOV2003
APVD: M.J. PHILLIPS 21NOV2003

PRODUCT SPEC: 108-1950
APPLICATION SPEC: 114-13120

NAME: SFP
1X6 CAGE ASSEMBLY WITH LIGHT PIPE

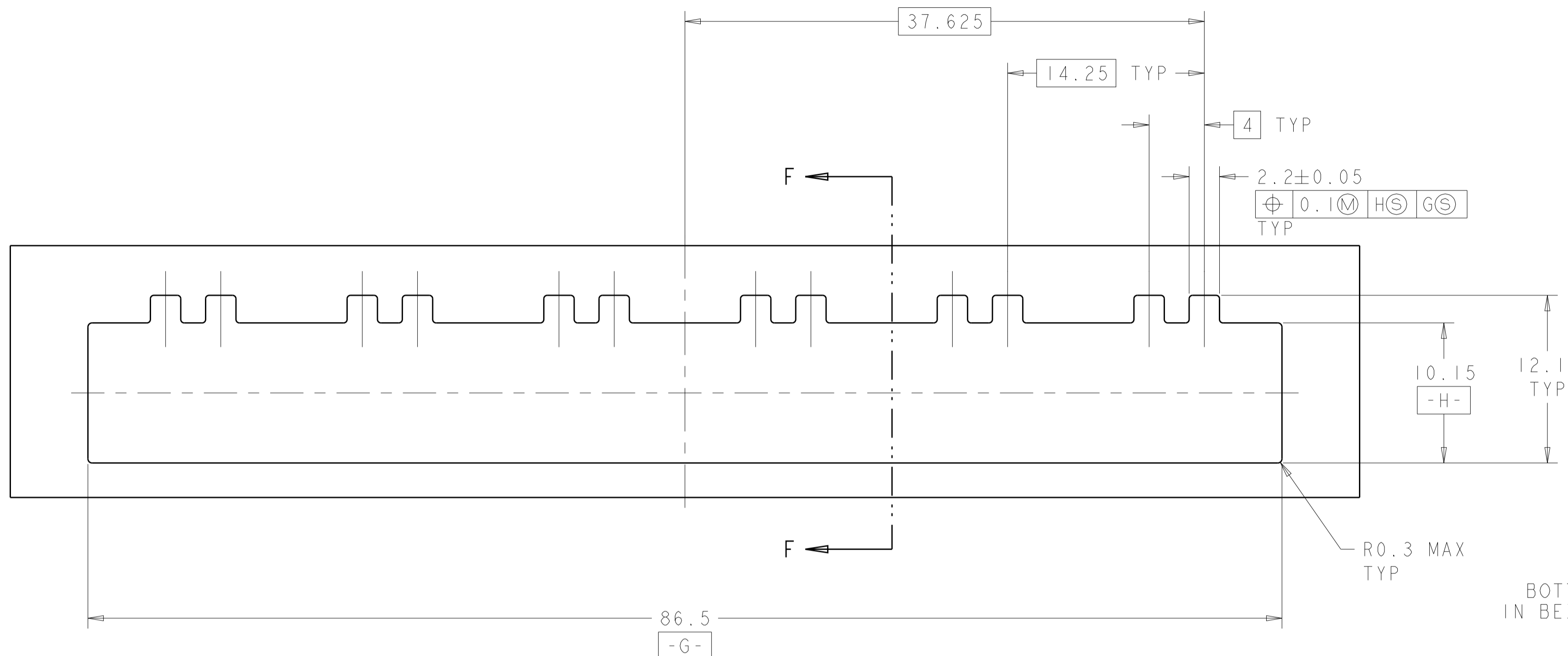
SIZE: A1
CAGE CODE: 100779
DRAWING NO: 1658939

RESTRICTED TO: -

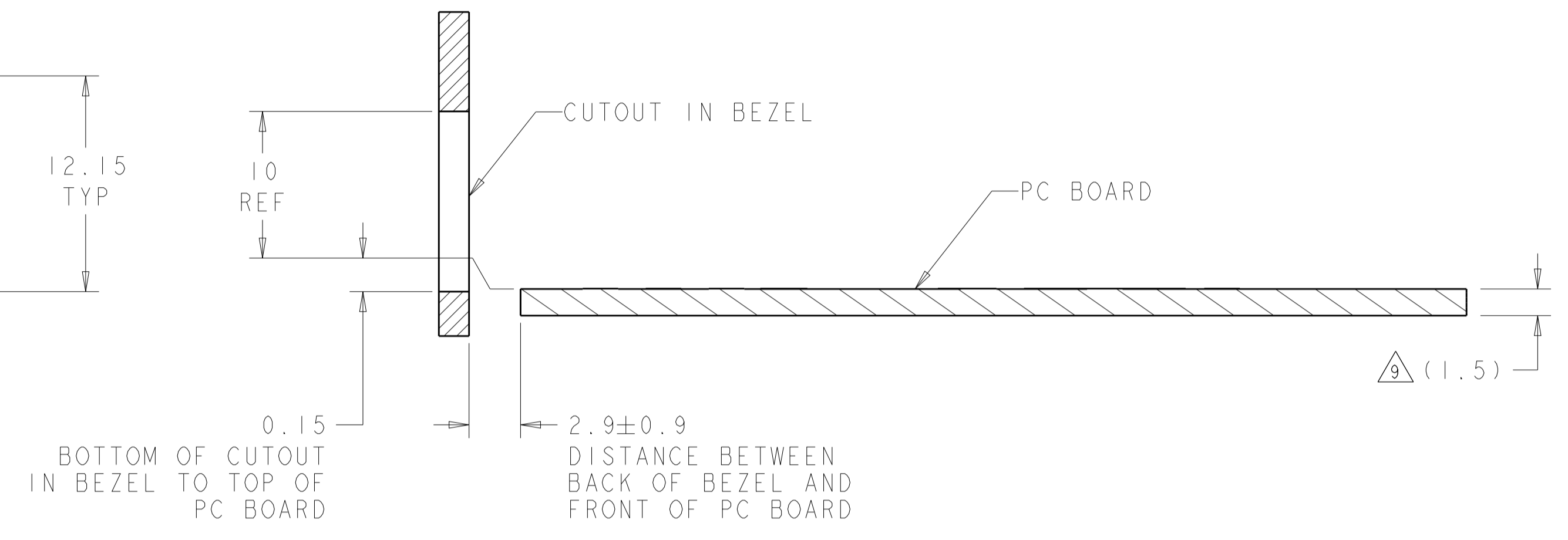
SCALE: 4:1 SHEET 1 OF 3 REV G

1658939-1, -2, -3, -4
SCALE 3:1

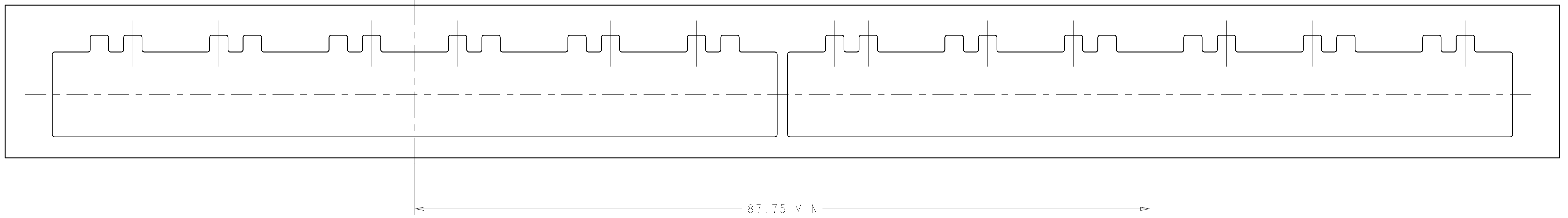
LOC		DIST		REVISIONS			
P	LTN	DESCRIPTION	DATE	DMN	APVD		
-	-	SEE SHEET 1	-	-	-		



RECOMMENDED BEZEL CUTOUT



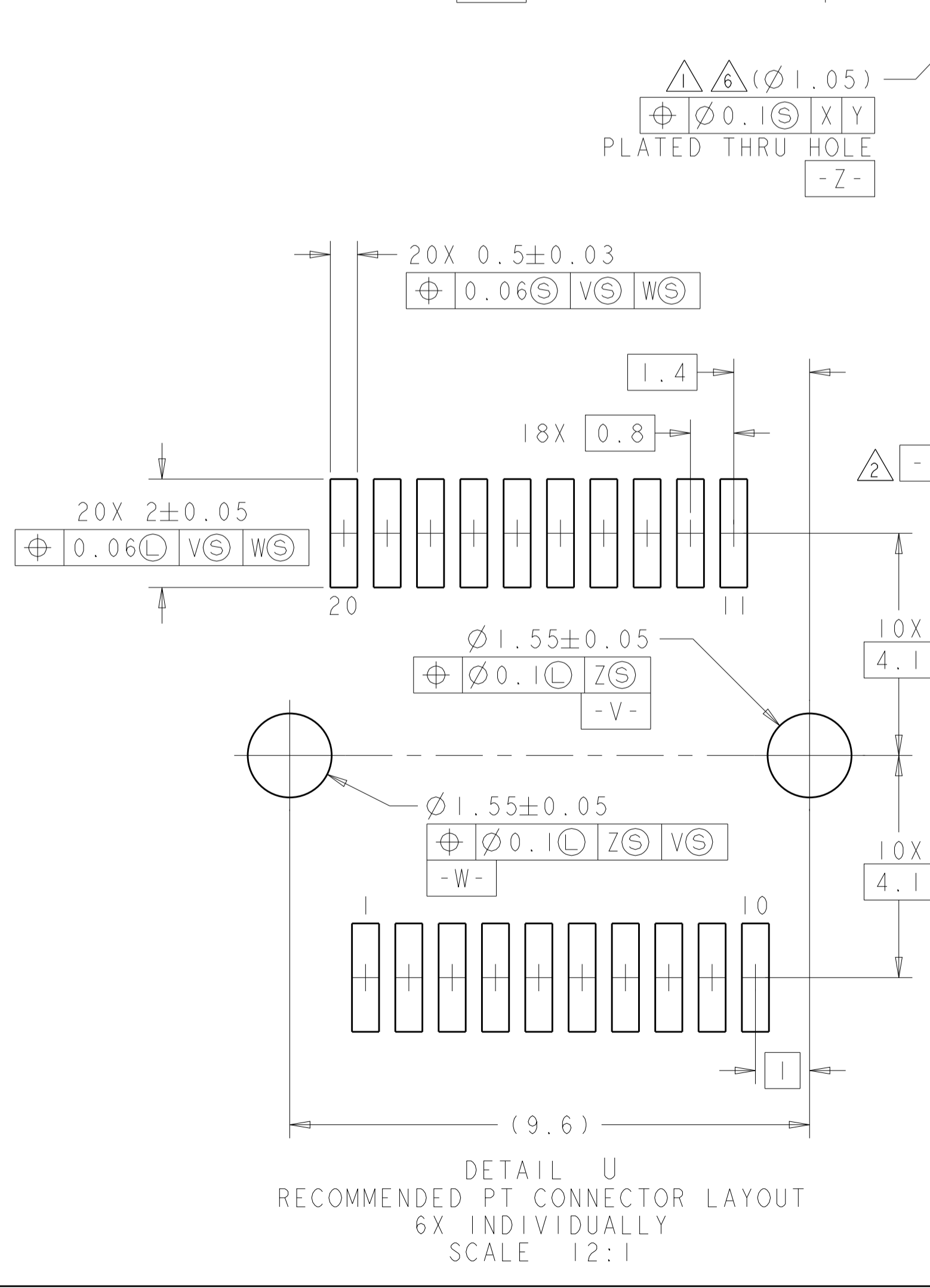
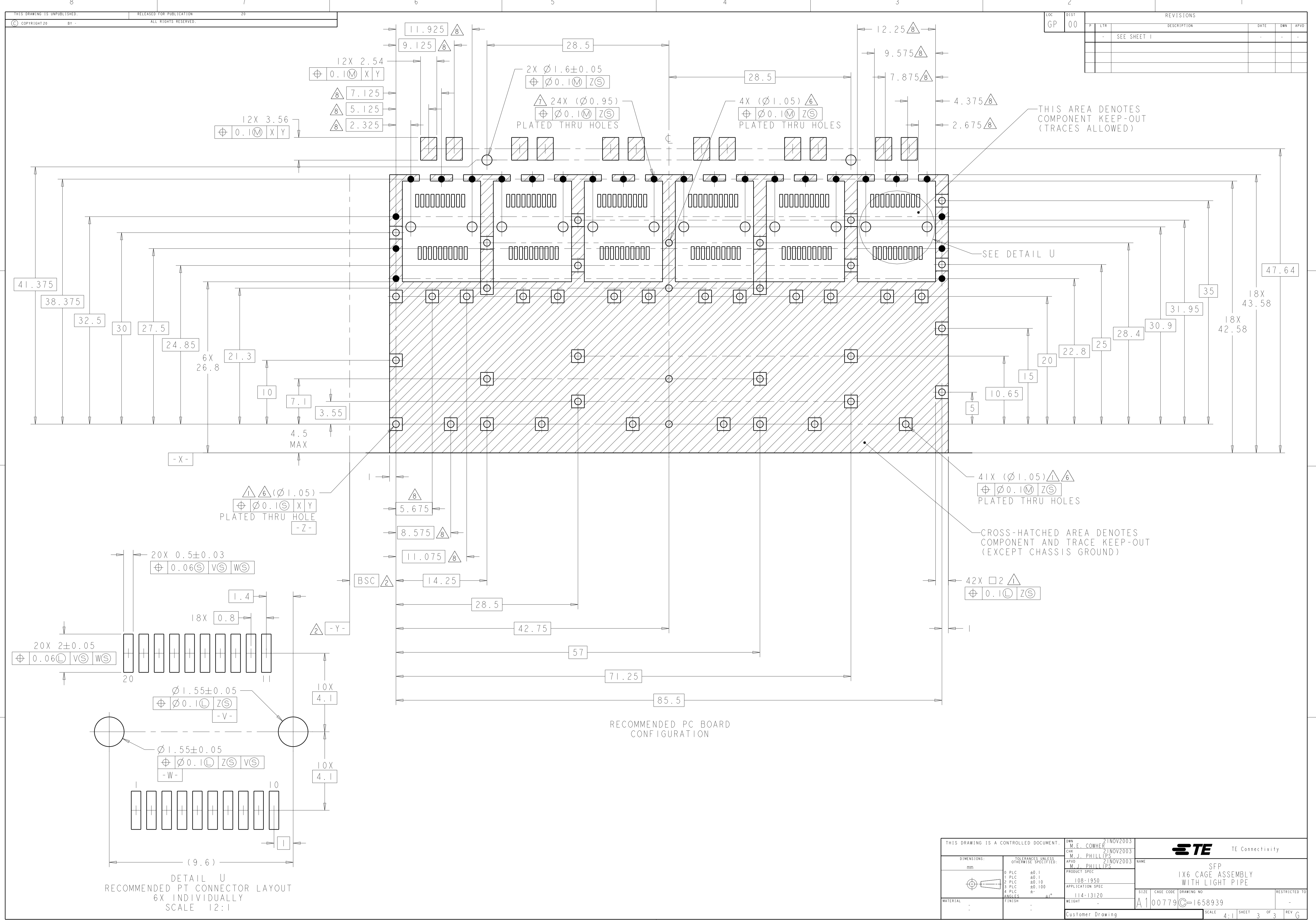
SECTION F-F
 RECOMMENDED BEZEL CONFIGURATION




87.75 MIN

THIS DRAWING IS A CONTROLLED DOCUMENT.		DMN	M. E. CONNER	21NOV2003	TE Connectivity
DIMENSIONS:		CHK	M. J. PHILLIPS	21NOV2003	
mm		APVD	M. J. PHILLIPS	21NOV2003	
0 PLC ±0.1 1 PLC ±0.1 2 PLC ±0.10 3 PLC ±0.100 4 PLC ± ANGLES ±°		TOLERANCES UNLESS OTHERWISE SPECIFIED:		NAME	
		FINISH		PRODUCT SPEC 108-1950 APPLICATION SPEC 114-13120	SFP 1X6 CAGE ASSEMBLY WITH LIGHT PIPE
MATERIAL		WEIGHT		SIZE A100779	CAGE CODE C=1658939
		Customer Drawing		DRAWING NO 1658939	RESTRICTED TO -
		SCALE		SHEET 2 OF 3	REV G

LOC		DIST		REVISIONS				
GP	00	P	LTH	DESCRIPTION	DATE	DWN	APVD	
		-		SEE SHEET 1	-	-	-	



RECOMMENDED PC BOARD CONFIGURATION

THIS DRAWING IS A CONTROLLED DOCUMENT.		DWN	M. E. CONNER	21NOV2003	 TE Connectivity	
DIMENSIONS:		CHK	M. J. PHILLIPS	21NOV2003		
mm		TOLERANCES UNLESS OTHERWISE SPECIFIED:			NAME	SFP
0 PLC ±0.1 1 PLC ±0.1 2 PLC ±0.10 3 PLC ±0.100 4 PLC ± ANGLES ±°		PRODUCT SPEC 108-1950 APPLICATION SPEC 114-13120			SIZE	1X6 CAGE ASSEMBLY WITH LIGHT PIPE
MATERIAL		FINISH	WT	WT	RESTRICTED TO	
				Customer Drawing	SCALE	4:1 SHEET 3 OF 3 REV G