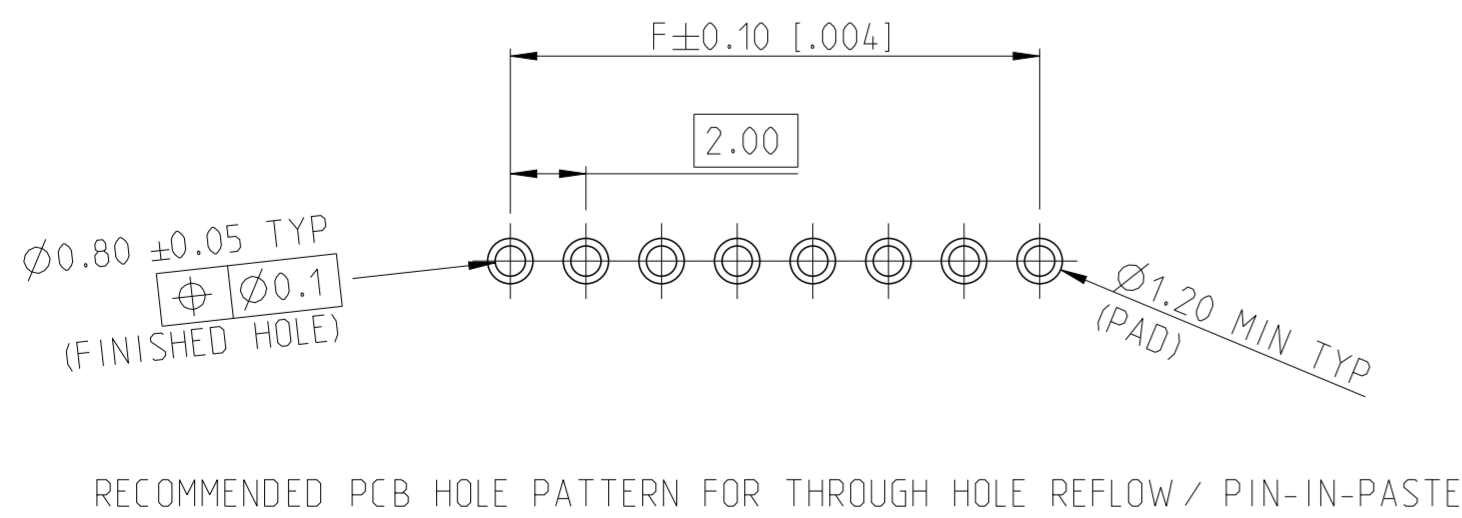
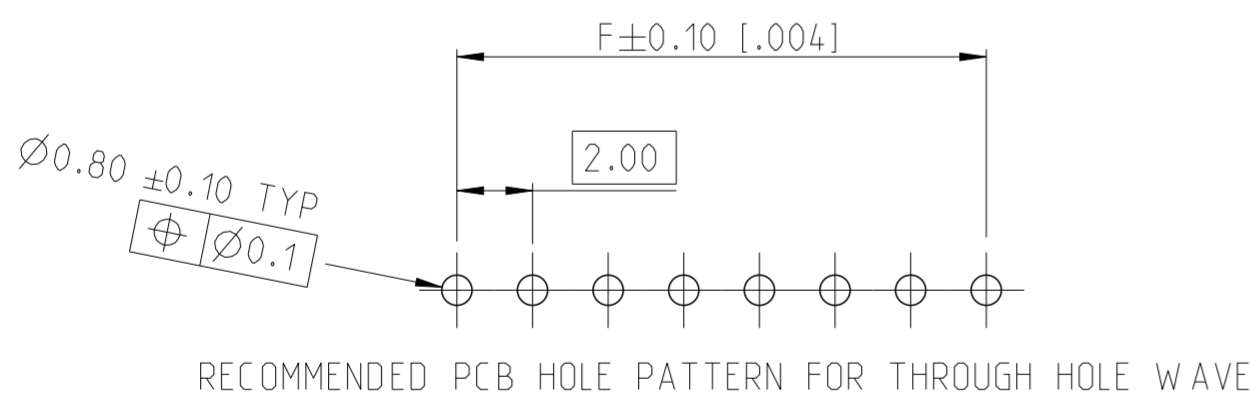
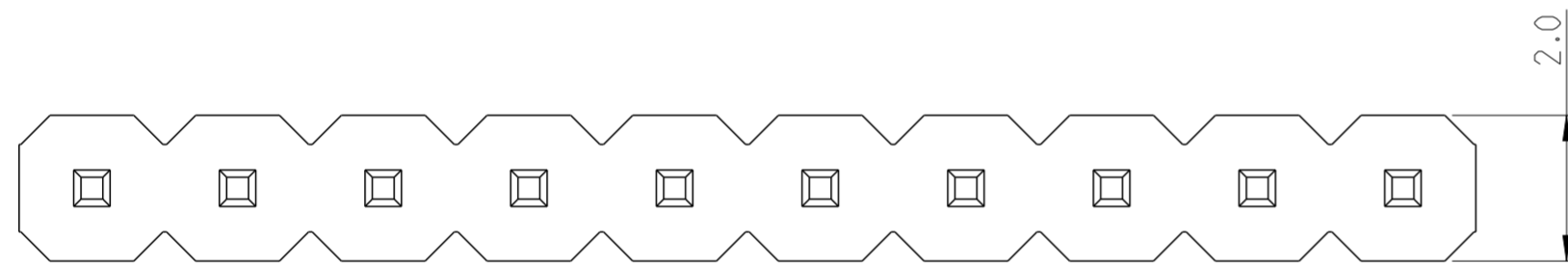
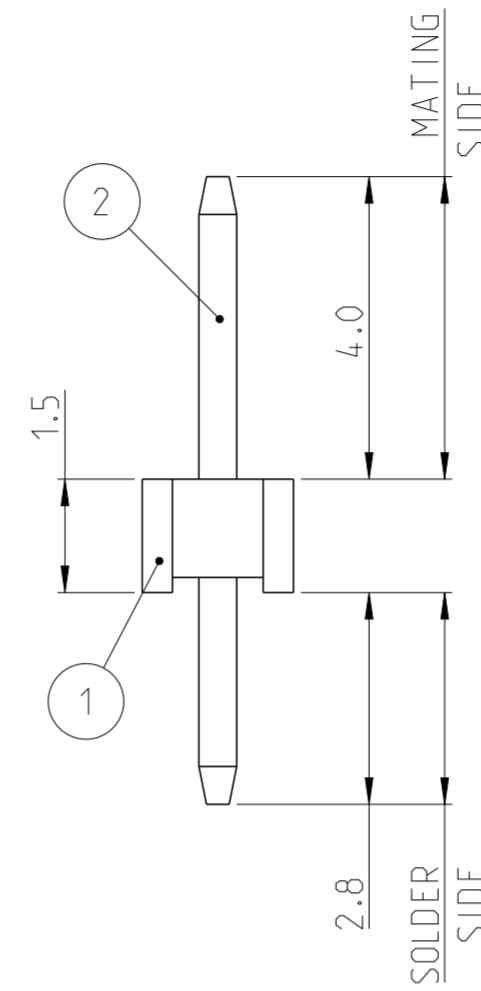
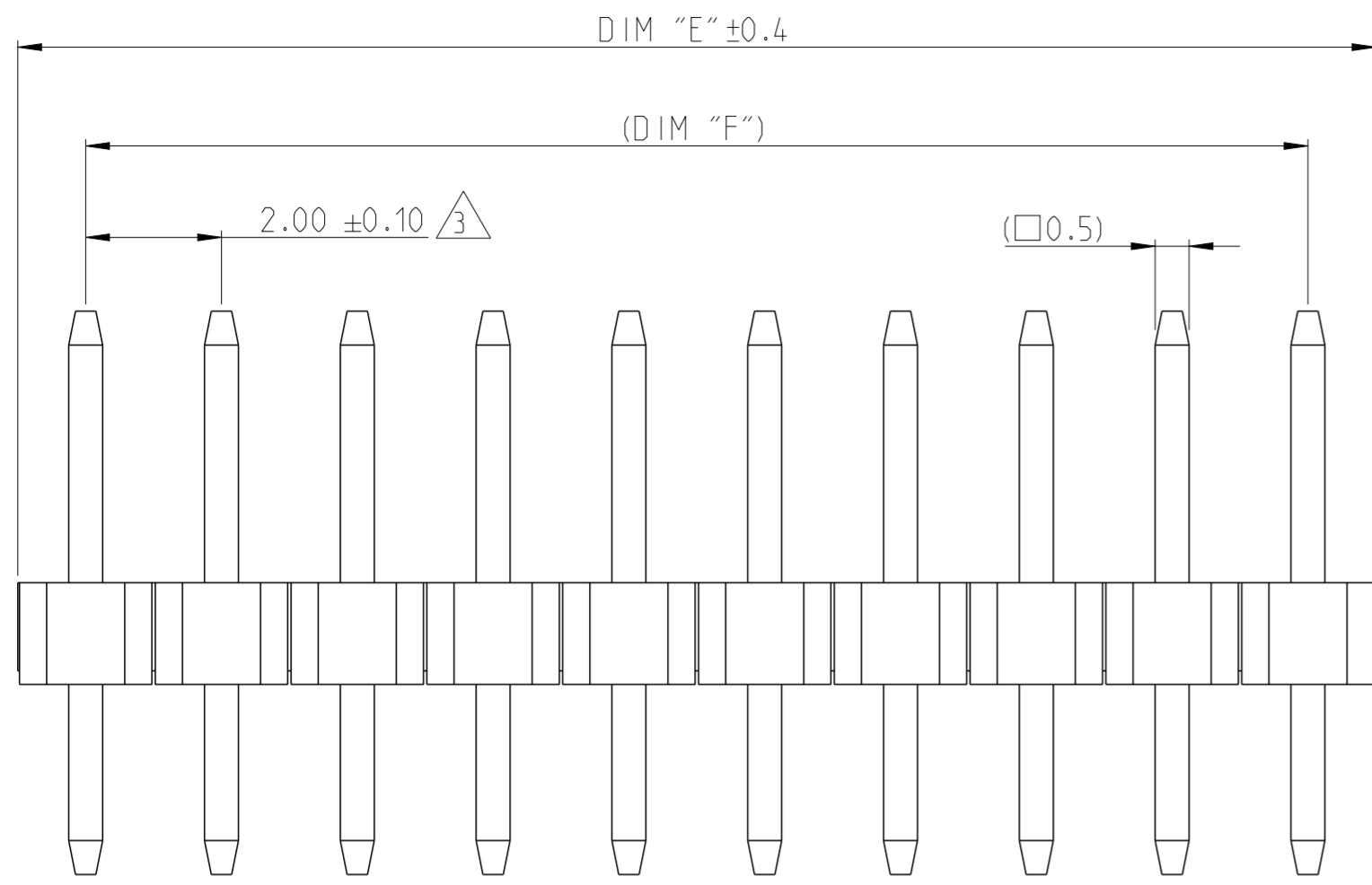


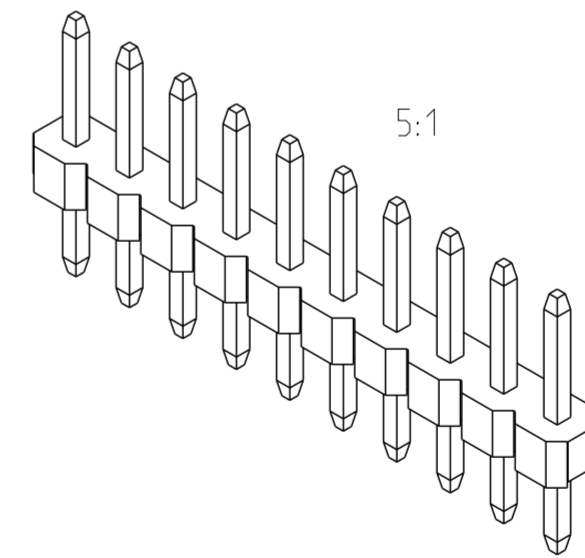
REVISIONS				
P	LTR	DESCRIPTION	DATE	APVD
A		RELEASE TO PRODUCTION	26AUG2019	AY PS
A1		REMOVED TOLERANCE FROM DIM F	17DEC2019	AY PS

NOTES:

- MATERIAL
HOUSING : HIGH TEMPERATURE THERMOPLASTIC, UL94-V0; COLOR- BLACK
POST : COPPER ALLOY
FINISH :
MATING SIDE: MIN. 0.1 μm GOLD OVER NICKEL UNDER PLATING.
SOLDER SIDE: MIN. 2.0 μm BRIGHT TIN OVER NICKEL UNDER PLATING.
- PACKAGING: BULK PACK.
- TOLERANCE NOT CUMULATIVE.
- CUTTING BURR MAX. 0.25 mm.



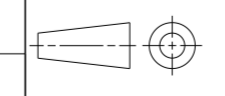
1-2355172-0 AS SHOWN



48.0	50.0	25	2-2355172-5
46.0	48.0	24	2-2355172-4
44.0	46.0	23	2-2355172-3
42.0	44.0	22	2-2355172-2
40.0	42.0	21	2-2355172-1
38.0	40.0	20	2-2355172-0
36.0	38.0	19	1-2355172-9
34.0	36.0	18	1-2355172-8
32.0	34.0	17	1-2355172-7
30.0	32.0	16	1-2355172-6
28.0	30.0	15	1-2355172-5
26.0	28.0	14	1-2355172-4
24.0	26.0	13	1-2355172-3
22.0	24.0	12	1-2355172-2
20.0	22.0	11	1-2355172-1
18.0	20.0	10	1-2355172-0
16.0	18.0	9	2355172-9
14.0	16.0	8	2355172-8
12.0	14.0	7	2355172-7
10.0	12.0	6	2355172-6
8.0	10.0	5	2355172-5
6.0	8.0	4	2355172-4
4.0	6.0	3	2355172-3
2.0	4.0	2	2355172-2
DIM "F"	DIM "E"	POS	TE PN

THIS DRAWING IS A CONTROLLED DOCUMENT.

DIMENSIONS:
mm



TOLERANCES UNLESS OTHERWISE SPECIFIED:

0 PLC ±
1 PLC ±0.2
2 PLC ±0.15
3 PLC ±
4 PLC ±
ANGLES ±2°
FINISH

DWN 09APR2019
RAGHAVENDRA.K
CHK 14AUG2019
KARTHIK.JK
APVD 16AUG2019
PRASHANTH
PRODUCT SPEC

108-64040
APPLICATION SPEC
114-32259

WEIGHT -

CUSTOMER DRAWING

TE Connectivity		NAME	
		AMPMODU 2mm BREAKAWAY HEADER SINGLE ROW, VERTICAL, 0.1 Au, BULK	
SIZE	CAGE CODE	DRAWING NO	RESTRICTED TO
A2	100779	C-2355172	-
SCALE 10:1		SHEET 1 OF 1	REV A1

CONTACT PIN	2
HOUSING	1
DESCRIPTION	ITEM NO.

MATERIAL	SEE NOTES
FINISH	SEE NOTES