

REV.	DESCRIPTION	DATE	APPROVED
C	21154 REDRAWN, ADDED 2.35 & .18/.31 DIM'S	1-16-91	ML
H	24064 ADDED ITEMS 12 AND 13	6/29/93	

CONSTRUCTION

MAIN CONTACTS  
 CONFIGURATION  
 VOLTAGE (NOMINAL)  
 CURRENT: RES.  
 CARRY ONLY

RUPTURE

AUX. CONTACTS  
 CONFIGURATION  
 VOLTAGE  
 CURRENT: RES.  
 IND.

COIL DATA  
 DUTY CYCLE

COIL VOLTAGE MAX.  
 PICKUP VOLTAGE HOT  
 DROP-OUT VOLTAGE  
 COIL RES.

ENVIRONMENTAL DATA  
 AMBIENT TEMP

LIFE ELECTRICAL  
 LIFE MECHANICAL  
 WEIGHT

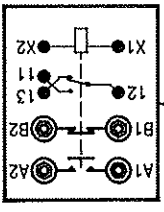
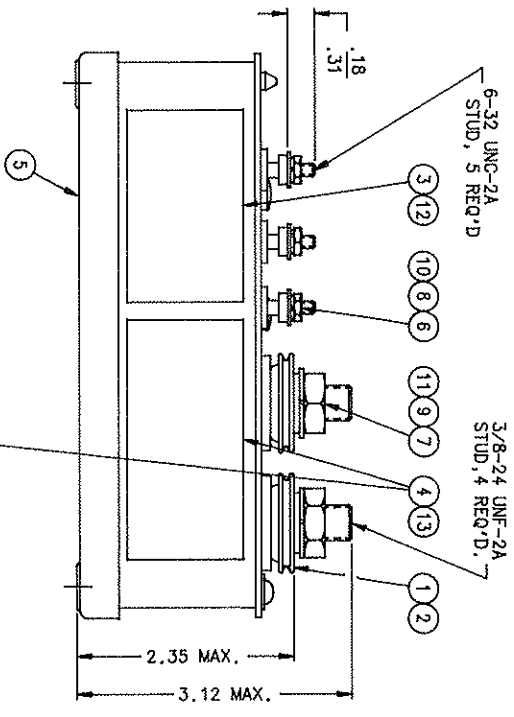
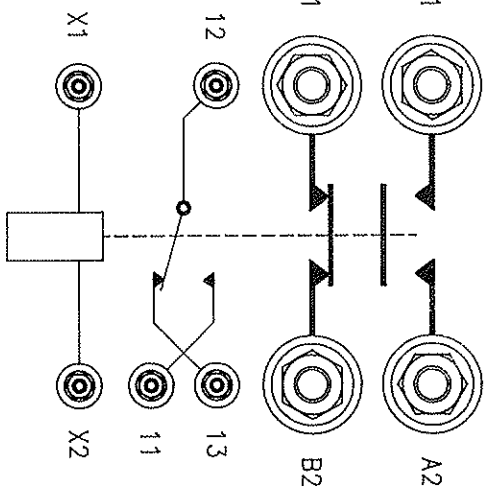
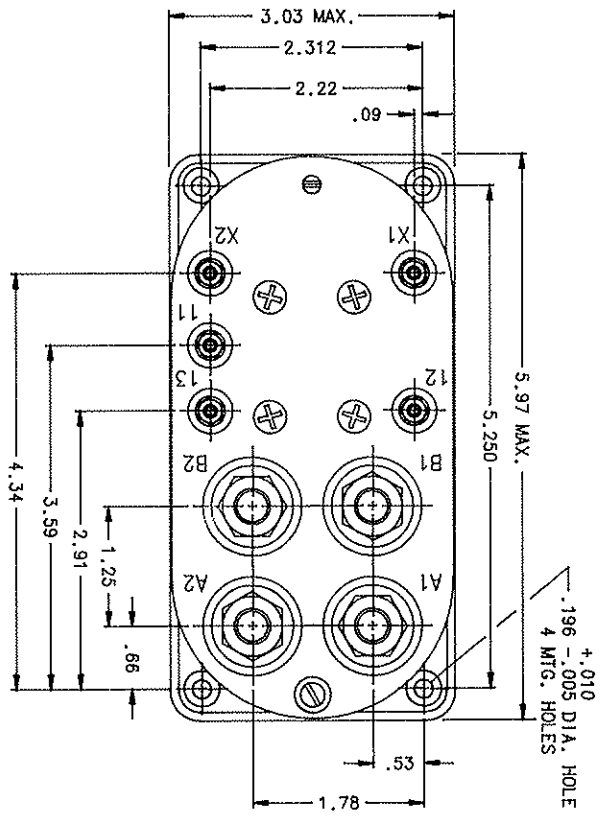
HERMETIC SEAL

SPDT SIDESTABLE  
 30 VDC  
 300 AMP  
 1500 AMP INRUSH  
 1000 AMP FOR 30 SEC.  
 3000 AMP

SPDT  
 28 VDC  
 5 AMP  
 5 AMP

INTERMITTANT  
 3 MINUTES MAX.  
 30 VDC  
 20 VDC MAX.  
 0.5 - 5.5  
 8.8 OHM ± 20% AT 25°C

- 65°C TO + 120°C  
 50,000 CYCLES MIN.  
 100,000 CYCLES MIN.  
 2 LBS. 14 OZ.



- NOTES:  
 1. THIS UNIT DESIGNED TO THE BASIC REQUIREMENTS OF MIL-R-6106E EXCEPT AS NOTED.  
 2. QUALIFICATION TESTING NOT COMPLETED.

QTY	PART OR IDENTIFYING NO	DESCRIPTION OR IDENTIFYING NO	FORM NO	DRAWING OR SPECIFICATION	MATERIAL OR NOTE
13	1	39529-017		OVERLAY	
12	1	39529-001		OVERLAY	
11	4	51807-084		WASHER - LOCK NO. 3/8	BRONZE
10	5	51806-014		WASHER - LOCK NO. 6 SPLIT	BRONZE
9	4	51704-024		WASHER, 5/8 X 25/64 X .062	BRASS
8	5	51702-204		WASHER, 3/8 X 9/64 X .031	BRASS
7	4	50407-164		NUT - 3/8-24 X 5/8 X 7/32 HEX	BRASS
6	5	50406-034		NUT, 6-32 X 1/4 X 5/64 HEX	BRASS
5	1	39010-020		CONTACTOR ASSEMBLY - PRIMARY	
4	1	32803-001		PLATE - HEADER DIAGRAM	
3	1	16043-074		PLATE NAME	
2	4	13121-001		TERMINAL INSULATING CUP	
1	4	13120-001		LOG SEAT	

BC-2639		REF.		HARTMAN ELECTRICAL MANUFACTURING MANFIELD, OHIO	
UNLESS OTHERWISE SPECIFIED DIMENSIONS ARE IN INCHES TOLERANCES ARE		BELL 212-075-199		CONTACTOR - HERMETICALLY SEALED, S.P.D.T., 300 AMP	
2 PL DEC. 3 PR. DEC. ANGLE ES.	4 .06	.010	± 1°	SIZE	CODE IDENT
CUSTOMER CONTROLLED DRAWING	BELL	SCALE	NONE	74063	DWG NO.
					AH-965H
					SHEET