



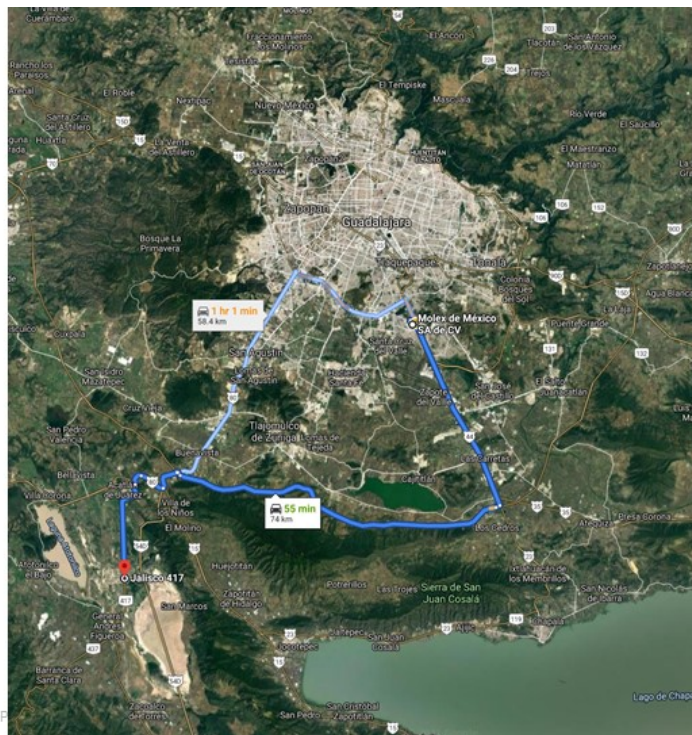
# Product Change Notification

<b>Date Issued :</b>	June 08, 2022	<b>PCN Number :</b>	511914
<b>Reason for Change :</b>	Equipment Transfer, Production Transfer or Rearrangement		
<b>Description of Change :</b>	This notification is to inform you about an equipment transfer that has been used to manufacture impacted part(s). Equipment has been moved to different site/ location/ premises. No changes will be made to product as part of this change		
<b>Reason for Short Notice :</b>	Custom Products		
<b>Assessment of Change :</b>	No change to parts - Form/Fit/Function		
<b>Planned Implementation Date :</b>	July 07, 2022		
<b>Sample Availability Date:</b>	June 06, 2022		
<b>Internal Molex Qualification Date :</b>	June 13, 2022		
<b>Last date to request Samples by Customer :</b>	June 30, 2022		
<b>Traceability Code Markings / Date :</b>	Date code		

Before Picture

## Guadalajara 2

- Located in Centro Logistico Jalisco Industrial Park
- 1 hour from existing Quad1
- Initial build will contain Molding, Assembly, and Reliability Testing capabilities
- A new Distribution Center will service Quad2
- Start of Production targeted for Q2 2022



3

Molex /Ford Confidential  
© Molex, LLC – All Rights Reserved. Unauthorized Reproduction/Distribution is Prohibited

After Picture

## Overview Description of Change

- All these part numbers are Molex proprietary designs, therefore considered catalog/general market product.
- There is no impact to product Fit, Form or Function with these transfers.
- Product validation plans will be approved by OEMs
- Start of Production is forecasted to begin in 2022.
- Request for Level 3 PPAP must occur one week prior . Submissions will not occur without request.
  - If PPAP is requested, disposition response required within 5 days of submit date or it will be considered approved.
  - If no PPAP is requested by June 30th, 2022, the PPAP will be considered approved.
- In accordance with the requirements established by the certifying bodies, the Guadalajara2 facility will be IATF 16949:2016, ISO14001:2015, ISO45001:2018 certified by Q3 2023. In the meantime, Guadalajara2 will operate following the same Quality Management Systems and rigor that our other certified plants operate within.
- In addition to the new manufacturing facility, we will be working with a third-party logistics provider in Guadalajara. Please discuss logistics options for receiving product with your sales contacts.

2

Molex Confidential Information  
© Molex, LLC – All Rights Reserved. Unauthorized Reproduction/Distribution is Prohibited.

**molex**

# RELEASED

You may address inquiries regarding this PCN by clicking on the below link  
[mailto:pcn\\_coordinator@molex.com?subject=PCN\\_Notification:511914](mailto:pcn_coordinator@molex.com?subject=PCN_Notification:511914)  
or contact your Local Sales Engineer.

Note: While responding, please retain " PCN Notification : **PCN Notification: 511914** " in the e-mail Subject line for faster response.

[Molex, LLC](#)  
2222 Wellington Court  
Lisle, IL 60532  
TEL (800) 786-6539  
[www.molex.com](http://www.molex.com)

**PCN No Part List**

511914 [0309681127](#)

511914 [0309681128](#)

511914 [0313821001](#)

511914 [0334721216](#)

511914 [0334721226](#)

511914 [0334721236](#)

511914 [0334721257](#)

511914 [0334721268](#)

511914 [0334721270](#)

511914 [0334721311](#)

511914 [0334721327](#)

511914 [0334721342](#)

511914 [0334721374](#)

511914 [0334721419](#)

511914 [0334721421](#)

511914 [0334721469](#)

511914 [0334721474](#)

511914 [0340620023](#)

511914 [0345650003](#)