

Customer Information Sheet

DRAWING No.: S7061-XXR

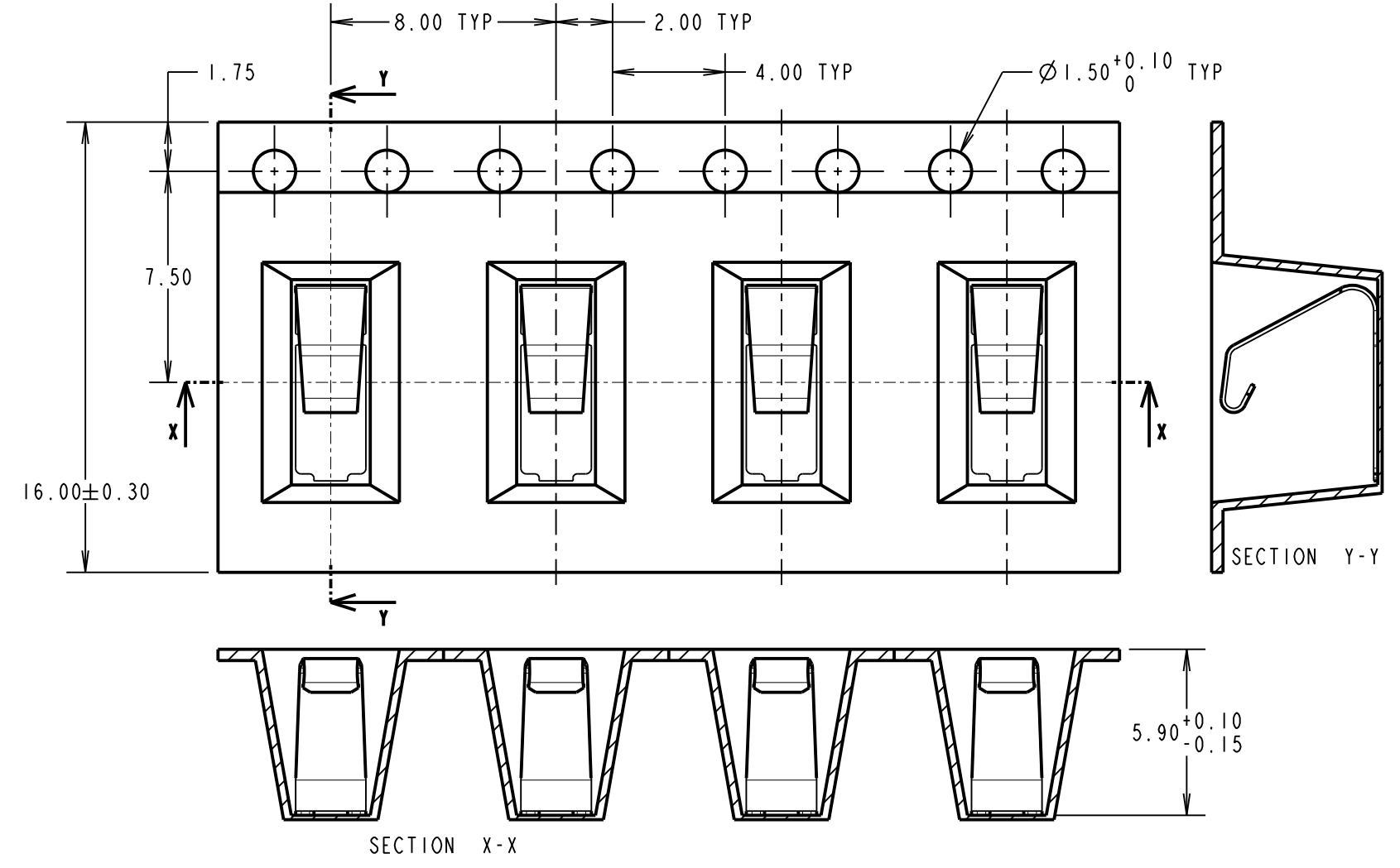
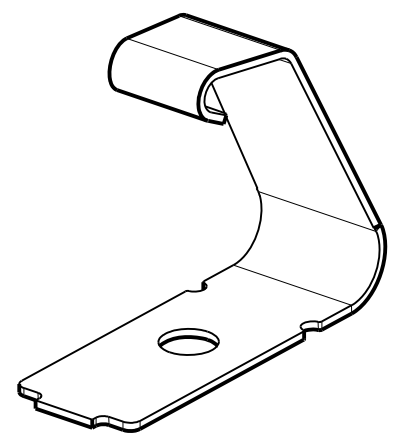
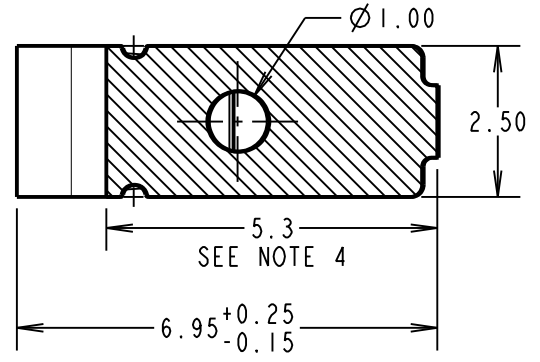
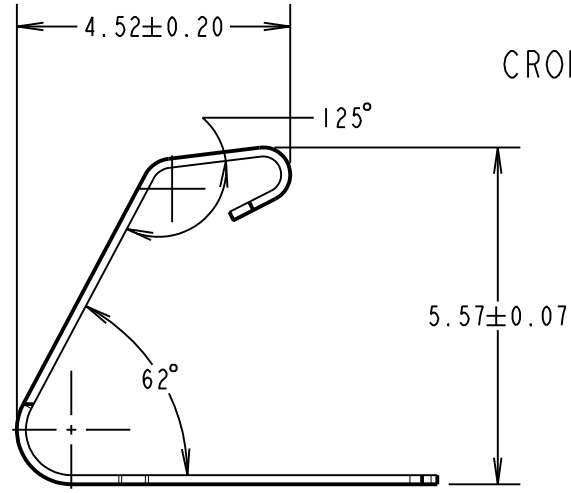
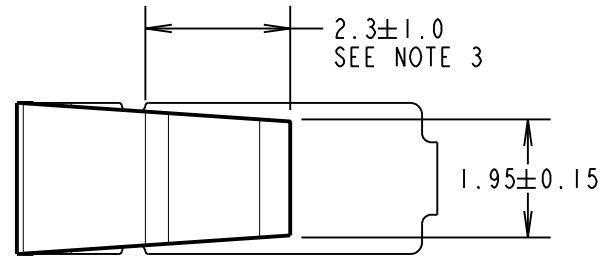
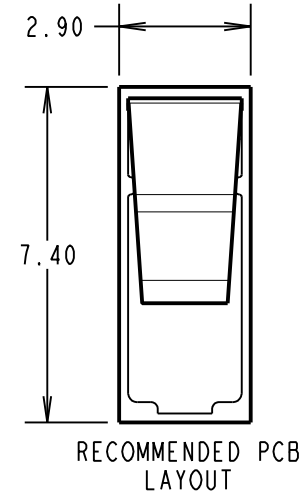
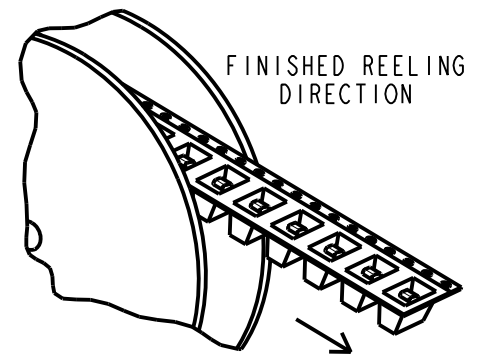
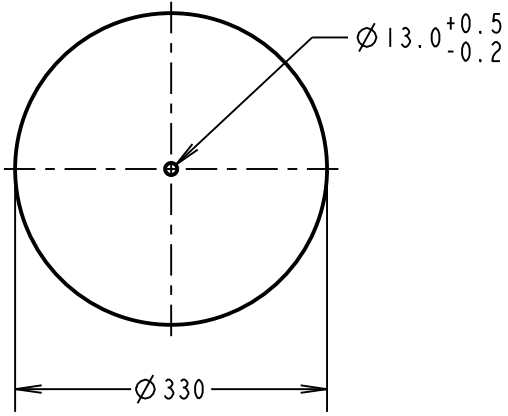
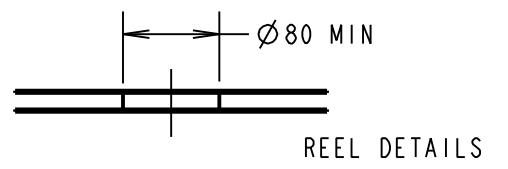
IF IN DOUBT - ASK

(C)

NOT TO SCALE

THIRD ANGLE PROJECTION

ALL DIMENSIONS IN mm



COMPONENT SPECIFICATION

MATERIAL:
 42 = TITANIUM COPPER ALLOY, 0.15mm THICK
 46 = BERYLLIUM COPPER, 0.15mm THICK
FINISH:
 42 = 2.4µ MIN 100% TIN ON FOOT AREA,
 GOLD FLASH ON CONTACT,
 0.7µ MIN NICKEL ALL OVER.
 46 = 2.4µ MIN 100% TIN OVER
 0.7µ MIN NICKEL ALL OVER.

ELECTRICAL:
 CURRENT RATING = 4A MAX
 CONTACT RESISTANCE = 20mΩ MAX
MECHANICAL:
 RECOMMENDED WORKING HEIGHT = 4.60mm / MIN FORCE = 1.2N
 RECOMMENDED MINIMUM WORKING HEIGHT = 4.10mm
 DURABILITY = 2500 CYCLES
ENVIRONMENTAL:
 OPERATING TEMPERATURE = -55°C TO +125°C

NOTES:

- QUANTITY OF COMPONENTS PER REEL:
 S706-42R = 1500,
 S706-46R = 1200.
- THIS PRODUCT IS TAPED AND REELED IN GENERAL ACCORDANCE WITH EIA-481-2 (ELECTRONICS INDUSTRIES ASSOCIATION).
- GOLD PLATING AREA ON S7061-42R.
- TIN PLATING AREA ON S7061-42R.

ORDER CODE:
S7061-XXR
 FINISH:
 42 - SELECTIVE GOLD & TIN
 OVER NICKEL
 46 - TIN OVER NICKEL

SB	11	13.05.16	13435
NAME	ISS.	DATE	C/NOTE
APPROVED:	S.BENNETT		
CHECKED:	M.PLESTED		
DRAWN:	S.BENNETT		
CUSTOMER REF.:			
ASSEMBLY DRG:			

HARWIN
 www.harwin.com
 technical@harwin.com

THIS DRAWING AND ANY INFORMATION OR DESCRIPTIVE MATTER SET OUT HEREON ARE CONFIDENTIAL AND COPYRIGHT PROPERTY OF THE HARWIN GROUP AND MUST NOT BE DISCLOSED, LOANED, COPIED OR USED FOR MANUFACTURING, TENDERING OR FOR ANY OTHER PURPOSE WITHOUT THEIR WRITTEN PERMISSION.

TOLERANCES
 X. = ±1mm
 X.X = ±0.50mm
 X.XX = ±0.10mm
 X.XXX = ±0.01mm
ANGLES = ±5°
 UNLESS STATED

MATERIAL:
 SEE ABOVE
FINISH: SEE ABOVE
S/AREA: mm²

TITLE:
 SMT SHIELD FINGER
 IN TAPE AND REEL
DRAWING NUMBER:
S7061-XXR
 SHT 3 OF 3