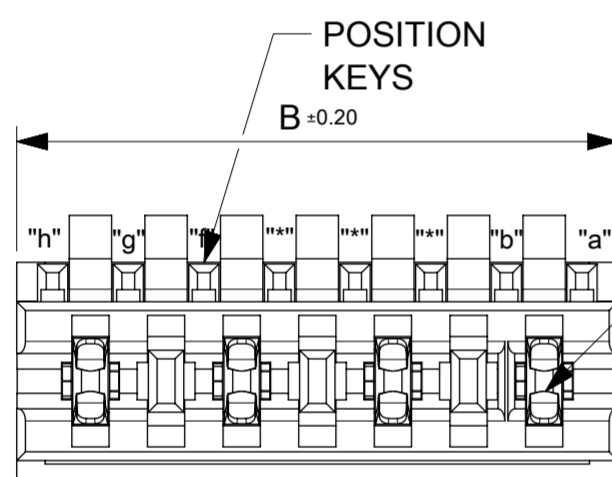
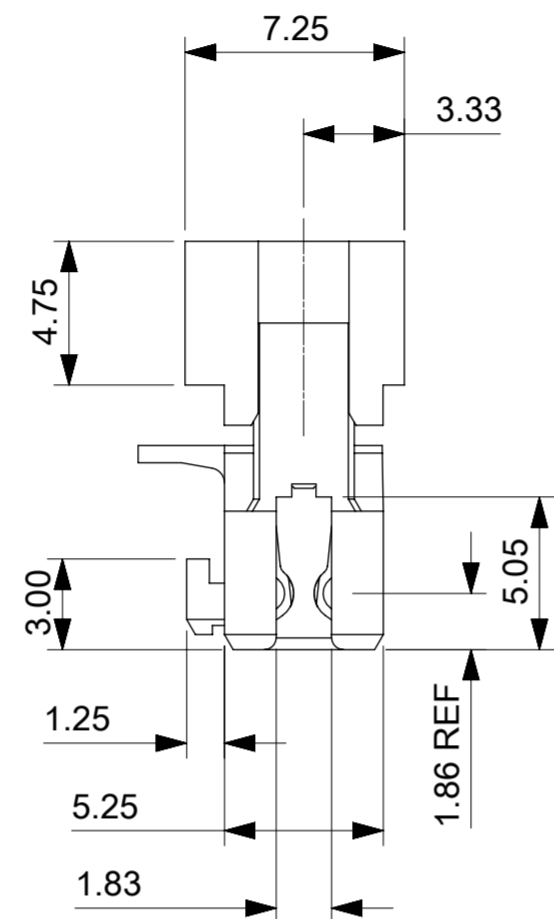
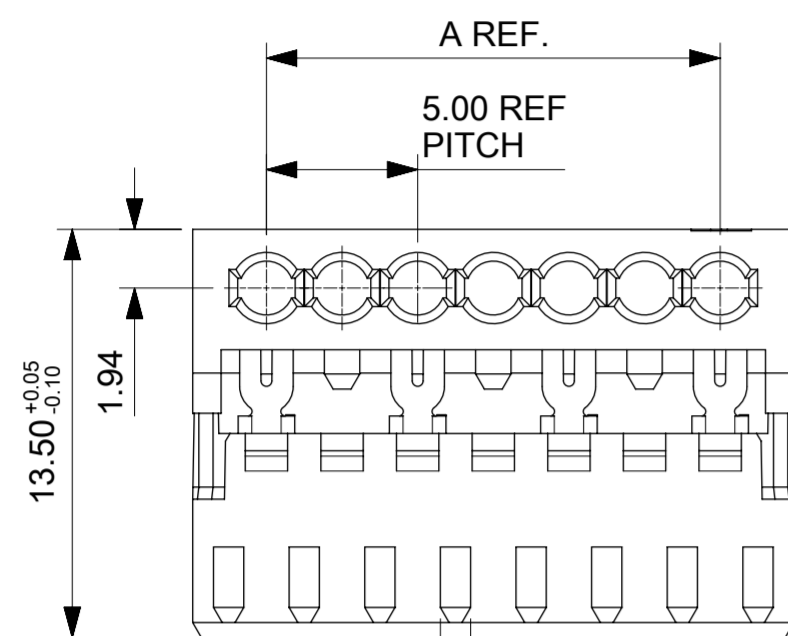
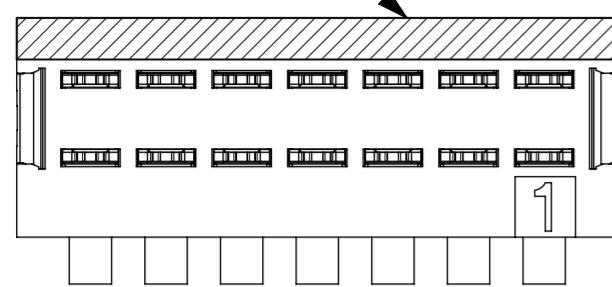
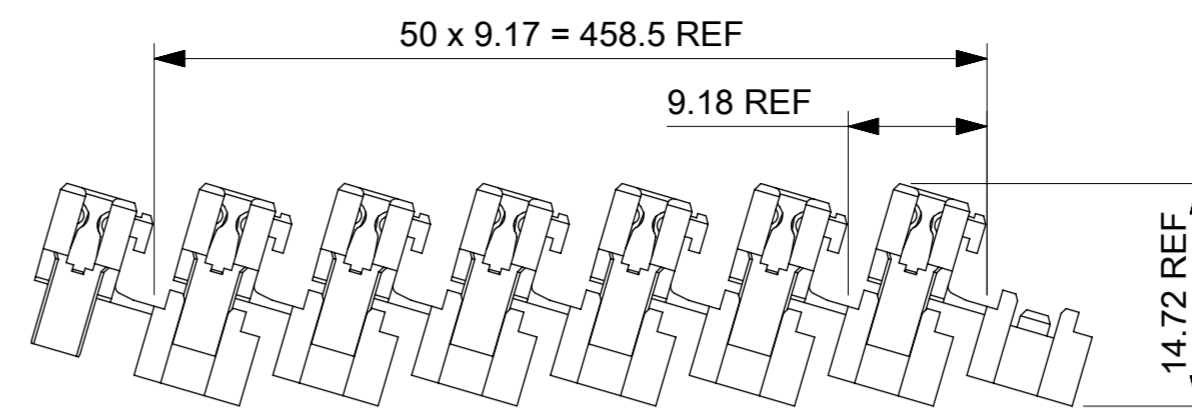


POSITION OF COLOUR STRIPE (see note 3)

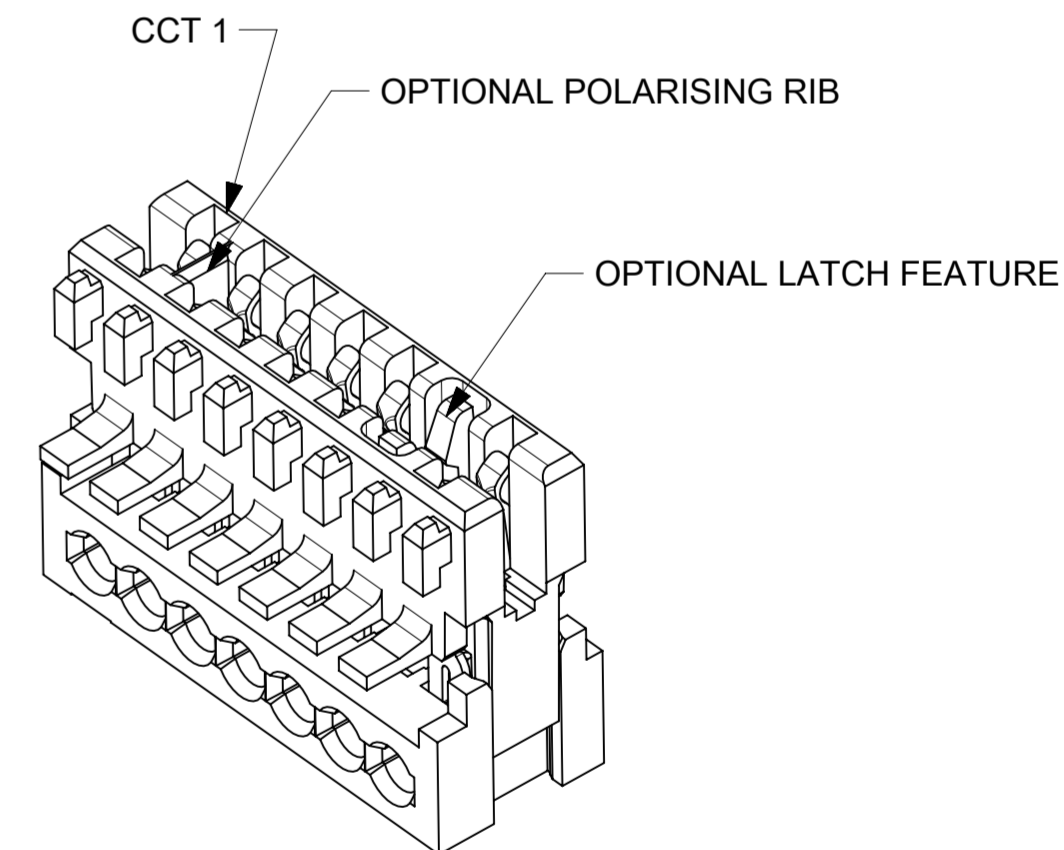


CIRCUIT 1

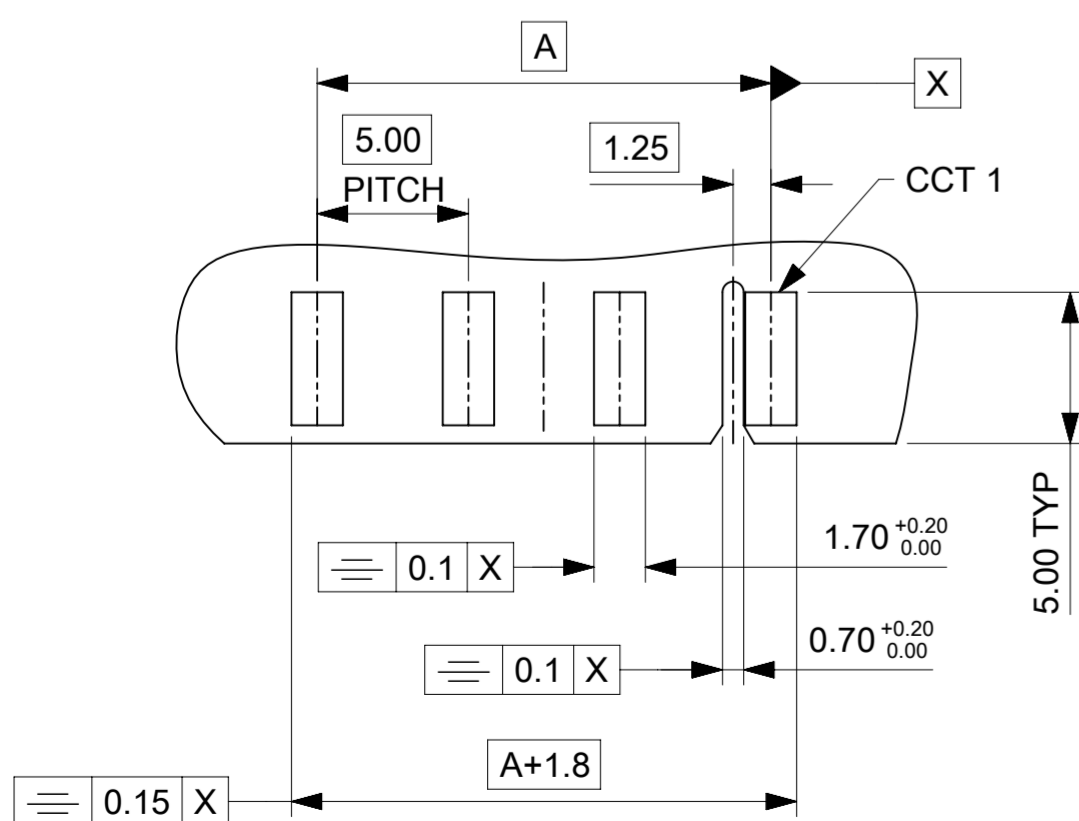


SHIPPING ARRANGEMENT

| CCT | A | B |
|-----|------|--------|
| 2 | 5.0 | 9.875 |
| 3 | 10.0 | 14.875 |
| 4 | 15.0 | 19.875 |
| 5 | 20.0 | 24.875 |
| 6 | 25.0 | 29.875 |
| 7 | 30.0 | 34.875 |
| 8 | 35.0 | 39.875 |
| 9 | 40.0 | 44.875 |
| 10 | 45.0 | 49.875 |



OPEN END WALLS OPTION



- PCB LAYOUT FOR 4CCT (5mm) CONNECTOR (WITH OPTIONAL POSITIONAL RIB SLOT BETWEEN CCT 1 & 2)
 - RECOMMENDED PCB THICKNESS 1.5±0.14MM

NOTES:

- REFER TO PRODUCT SPECIFICATION: PS-99020-0040.
- MATERIAL: HOUSING - NYLON PA6 UL94-V0, COLOUR: NATURAL (WHITE).
 TERMINAL: PHOSPHOR BRONZE 0.30 REF. THICK - PLATING HOT TIN DIP.
- COLOUR STRIPE IS OPTIONAL. AVAILABLE IN THE FOLLOWING COLOURS: BLACK, RED, GREEN, BLUE
- REFER TO PACKAGING SPEC (PK-90871-001).
- REFER TO APPLICATION SPEC (990330008 AS)
- RIB THICKNESS = 0.38mm

F1

THIS DRAWING CONTAINS INFORMATION THAT IS PROPRIETARY TO MOLEX ELECTRONIC TECHNOLOGIES, LLC AND SHOULD NOT BE USED WITHOUT WRITTEN PERMISSION

| DIMENSION UNITS | SCALE | CURRENT REV DESC: | molex | | | |
|--|--------|----------------------------|---|------------------|---------------|--|
| mm | | | APPLI-MATE 2.5 FEMALE 5MM TERMINAL PITCH (MATL: NYLON PA6) | | | |
| GENERAL TOLERANCES (UNLESS SPECIFIED) | | | | | | |
| ANGULAR TOL | ± 0.5° | EC NO: 701611 | PRODUCT CUSTOMER DRAWING | | | |
| 4 PLACES | ± | DRWN: MBN02 2022/03/28 | | | | |
| 3 PLACES | ± 0.05 | CHK'D: MBN02 2022/03/31 | DOCUMENT NUMBER: 917170001 DOC TYPE: PSD DOC PART: 000 REVISION: G1 | | | |
| 2 PLACES | ± 0.1 | APPR: SDEVITT 2022/03/31 | | | | |
| 1 PLACE | ± 0.2 | INITIAL REVISION: | MATERIAL NUMBER: SEE CHARTS CUSTOMER: GENERAL MARKET SHEET NUMBER: 1 OF 4 | | | |
| 0 PLACES | ± | DRWN: CFISHER01 2016/05/06 | | | | |
| DRAFT WHERE APPLICABLE MUST REMAIN WITHIN DIMENSIONS | | | THIRD ANGLE PROJECTION | DRAWING: A2-SIZE | SERIES: 91717 | |

2 CIRCUIT

| PART NUMBER | HOUSING USED | LATCH POSITION | REMOVED POSITION KEYS | CONFIGURATION | FIRST ENDWALL | LAST ENDWALL | POLARIZING RIB BETWEEN | COLOUR STRIPE |
|-------------|--------------|----------------|-----------------------|---------------|---------------|--------------|------------------------|---------------|
| 91717-0002 | 91715-0003 | NONE | NONE | | OPEN | OPEN | NONE | NONE |
| 91717-0003 | 91715-0003 | NONE | a | | OPEN | OPEN | NONE | NONE |
| 91717-0004 | 91715-0003 | NONE | b | | OPEN | OPEN | NONE | NONE |
| 91717-0005 | 91715-0003 | NONE | c | | OPEN | OPEN | NONE | NONE |
| 91717-0006 | 91715-0003 | NONE | d | | OPEN | OPEN | NONE | NONE |
| 91717-0007 | 91715-0003 | NONE | b d | | OPEN | OPEN | NONE | NONE |
| 91717-0008 | 91715-0003 | NONE | a c | | OPEN | OPEN | NONE | NONE |
| 91717-0009 | 91715-0003 | NONE | a d | | OPEN | OPEN | NONE | NONE |
| 91717-0010 | 91715-0003 | NONE | a b | | OPEN | OPEN | NONE | NONE |
| 91717-0011 | 91715-0003 | NONE | b c | | OPEN | OPEN | NONE | NONE |
| 91717-0012 | 91715-0003 | NONE | c d | | OPEN | OPEN | NONE | NONE |
| 91717-0013 | 91715-0003 | NONE | b c | | OPEN | OPEN | NONE | RED |
| 91717-0014 | 91715-0003 | NONE | b c d | | OPEN | OPEN | NONE | NONE |
| 91717-0015 | 91715-0003 | NONE | b c d | | OPEN | OPEN | NONE | BLUE |
| 91717-0016 | 91715-0003 | NONE | c d | | OPEN | OPEN | NONE | BLUE |
| 91717-0017 | 91715-0203 | NONE | NONE | | OPEN | OPEN | CCT 2&3 | NONE |
| 91717-0018 | 91715-0103 | NONE | NONE | | OPEN | OPEN | CCT 1&2 | NONE |
| 91717-0019 | 91715-0003 | NONE | NONE | | OPEN | OPEN | NONE | BLUE |
| 91717-0020 | 91715-0003 | NONE | a c | | OPEN | OPEN | NONE | BLUE |
| 91717-0021 | 91715-0003 | NONE | b c | | OPEN | OPEN | NONE | GREEN |
| 91717-0022 | 91715-0003 | NONE | a d | | OPEN | OPEN | NONE | GREEN |
| 91717-0023 | 91715-0003 | NONE | NONE | | OPEN | OPEN | NONE | GREEN |
| 91717-0024 | 91715-0103 | NONE | d | | OPEN | OPEN | CCT 1&2 | RED |
| 91717-0025 | 91715-0103 | NONE | a c | | OPEN | OPEN | CCT 1&2 | RED |
| 91717-0026 | 91715-0203 | NONE | a | | OPEN | OPEN | CCT 2&3 | NONE |
| 91717-0027 | 91715-0203 | NONE | NONE | | OPEN | OPEN | CCT 2&3 | RED |
| 91717-0028 | 91715-0003 | NONE | a | | OPEN | OPEN | NONE | RED |
| 91717-0029 | 91715-0003 | NONE | NONE | | OPEN | OPEN | NONE | RED |
| 91717-0030 | 91715-0103 | NONE | b c d | | OPEN | OPEN | CCT 1&2 | RED |
| 91717-0031 | 91715-0203 | NONE | a | | OPEN | OPEN | CCT 2&3 | RED |

2 CIRCUIT (CONT)

| PART NUMBER | HOUSING USED | LATCH POSITION | REMOVED POSITION KEYS | CONFIGURATION | FIRST ENDWALL | LAST ENDWALL | POLARIZING RIB BETWEEN | COLOUR STRIPE |
|-------------|--------------|----------------|-----------------------|---------------|---------------|--------------|------------------------|---------------|
| 91717-0032 | 91715-0003 | NONE | b | | OPEN | OPEN | NONE | RED |
| 91717-0033 | 91715-0003 | NONE | d | | OPEN | OPEN | NONE | YELLOW |
| 91717-0035 | 91715-0003 | NONE | b d | | OPEN | OPEN | NONE | GREEN |
| 91717-0036 | 91715-0103 | NONE | NONE | | OPEN | OPEN | CCT 1&2 | RED |
| 91717-0037 | 91715-0103 | NONE | b d | | OPEN | OPEN | CCT 1&2 | RED |
| 91717-0038 | 91715-0203 | NONE | a c | | OPEN | OPEN | CCT 2&3 | NONE |
| 91717-0039 | 91715-0003 | NONE | a b d | | OPEN | OPEN | NONE | NONE |
| 91717-0040 | 91715-0003 | NONE | a | | OPEN | OPEN | NONE | BLUE |
| 91717-0041 | 91715-0103 | NONE | a d | | OPEN | OPEN | CCT 1&2 | NONE |
| 91717-0042 | 91715-0103 | NONE | NONE | | OPEN | OPEN | CCT 1&2 | GREEN |
| 91717-0043 | 91715-0203 | NONE | d | | OPEN | OPEN | CCT 2&3 | NONE |
| 91717-0044 | 91715-0003 | NONE | a c d | | OPEN | OPEN | NONE | NONE |
| 91717-0045 | 91715-0003 | NONE | a b c | | OPEN | OPEN | NONE | NONE |
| 91717-0046 | 91715-0003 | NONE | a b d | | OPEN | OPEN | NONE | RED |
| 91717-0047 | 91715-0003 | NONE | a c d | | OPEN | OPEN | NONE | PURPLE |

NOTES

- + DENOTES TERMINAL VOIDED POSITION
⊕ DENOTES TERMINAL LOADED POSITION
| DENOTES POLARIZING RIB POSITION
- MOLEX HOUSING NO. FOR REFERENCE ONLY

| | | | | | | | | | | | |
|---|--|-------|--|----------------------------|--|---------|--|----------------|--|---|--|
| THIS DRAWING CONTAINS INFORMATION THAT IS PROPRIETARY TO MOLEX ELECTRONIC TECHNOLOGIES, LLC AND SHOULD NOT BE USED WITHOUT WRITTEN PERMISSION | | | | | | | | | | | |
| DIMENSION UNITS | | SCALE | | CURRENT REV DESC: | | | | | | | |
| mm | | | | | | | | | | | |
| GENERAL TOLERANCES (UNLESS SPECIFIED) | | | | EC NO: 701611 | | | | | | APPLI-MATE 2.5 FEMALE 5MM TERMINAL PITCH (MATL: NYLON PA6) | |
| ANGULAR TOL ± 0.5° | | | | DRWN: MBN02 2022/03/28 | | | | | | | |
| 4 PLACES ± | | | | CHK'D: MBN02 2022/03/31 | | | | | | | |
| 3 PLACES ± 0.05 | | | | APPR: SDEVITT 2022/03/31 | | | | | | PRODUCT CUSTOMER DRAWING | |
| 2 PLACES ± 0.1 | | | | INITIAL REVISION: | | | | | | DOCUMENT NUMBER | |
| 1 PLACE ± 0.2 | | | | DRWN: CFISHER01 2016/05/06 | | | | | | 917170001 | |
| 0 PLACES ± | | | | APPR: BRUTTLE 2016/07/01 | | | | | | DOC TYPE DOC PART REVISION | |
| DRAFT WHERE APPLICABLE MUST REMAIN WITHIN DIMENSIONS | | | | THIRD ANGLE PROJECTION | | DRAWING | | SERIES | | MATERIAL NUMBER | |
| | | | | | | A2-SIZE | | 91717 | | SEE CHARTS | |
| | | | | | | | | CUSTOMER | | SHEET NUMBER | |
| | | | | | | | | GENERAL MARKET | | 2 OF 4 | |

| 3 CIRCUIT | | | | | | | | |
|-------------|--------------|----------------|-----------------------|---------------|---------------|--------------|------------------------|---------------|
| PART NUMBER | HOUSING USED | LATCH POSITION | REMOVED POSITION KEYS | CONFIGURATION | FIRST ENDWALL | LAST ENDWALL | POLARIZING RIB BETWEEN | COLOUR STRIPE |
| 91717-1001 | 91715-0005 | NONE | NONE | | OPEN | OPEN | NONE | NONE |
| 91717-1002 | 91715-0005 | NONE | b | | OPEN | OPEN | NONE | NONE |
| 91717-1003 | 91715-0005 | NONE | c | | OPEN | OPEN | NONE | NONE |
| 91717-1004 | 91715-0005 | NONE | c d e | | OPEN | OPEN | NONE | NONE |
| 91717-1005 | 91715-0405 | NONE | NONE | | OPEN | OPEN | CCT 4&5 | NONE |
| 91717-1007 | 91715-0105 | NONE | NONE | | OPEN | OPEN | CCT 1&2 | NONE |
| 91717-1008 | 91715-0005 | NONE | d e f | | OPEN | OPEN | NONE | RED |
| 91717-1009 | 91715-0005 | NONE | a b c | | OPEN | OPEN | NONE | RED |
| 91717-1010 | 91715-0005 | NONE | a c d e | | OPEN | OPEN | NONE | NONE |
| 91717-1011 | 91715-0005 | NONE | a c d e | | OPEN | OPEN | NONE | BLUE |
| 91717-1012 | 91715-0005 | NONE | b c d e | | OPEN | OPEN | NONE | NONE |
| 91717-1013 | 91715-0005 | NONE | a c e | | OPEN | OPEN | NONE | NONE |
| 91717-1014 | 91715-0005 | NONE | a e | | OPEN | OPEN | NONE | NONE |
| 91717-1015 | 91715-0005 | NONE | a e | | OPEN | OPEN | NONE | BLACK |
| 91717-1016 | 91715-0005 | NONE | d e f | | OPEN | OPEN | NONE | NONE |
| 91717-1017 | 91715-0005 | NONE | NONE | | OPEN | OPEN | NONE | GREEN |
| 91717-1018 | 91715-0005 | NONE | d f | | OPEN | OPEN | NONE | NONE |
| 91717-1019 | 91715-0425 | NONE | NONE | | CLOSED | CLOSED | CCT 4&5 | NONE |
| 91717-1020 | 91715-0005 | NONE | d | | OPEN | OPEN | NONE | NONE |
| 91717-1021 | 91715-0005 | NONE | c d e f | | OPEN | OPEN | NONE | NONE |
| 91717-1022 | 91715-0005 | NONE | a b | | OPEN | OPEN | NONE | NONE |
| 91717-1023 | 91715-0105 | NONE | c d e f | | OPEN | OPEN | CCT 1&2 | NONE |

| 4 CIRCUIT | | | | | | | | | |
|-------------|--------------|----------------|-----------------------|---------------|---------------|--------------|------------------------|---------------|--|
| PART NUMBER | HOUSING USED | LATCH POSITION | REMOVED POSITION KEYS | CONFIGURATION | FIRST ENDWALL | LAST ENDWALL | POLARIZING RIB BETWEEN | COLOUR STRIPE | |
| 91717-2001 | 91715-0007 | NONE | NONE | | OPEN | OPEN | NONE | NONE | |
| 91717-2002 | 91715-0007 | NONE | a | | OPEN | OPEN | NONE | NONE | |
| 91717-2003 | 91715-0007 | NONE | b | | OPEN | OPEN | NONE | NONE | |
| 91717-2004 | 91715-0007 | NONE | d f | | OPEN | OPEN | NONE | NONE | |
| 91717-2005 | 91715-0007 | NONE | a e g | | OPEN | OPEN | NONE | RED | |
| 91717-2006 | 91715-0007 | NONE | c e | | OPEN | OPEN | NONE | NONE | |
| 91717-2007 | 91715-0007 | NONE | a b d e g | | OPEN | OPEN | NONE | NONE | |
| 91717-2008 | 91715-0007 | NONE | NONE | | OPEN | OPEN | NONE | BLUE | |
| 91717-2009 | 91715-0007 | NONE | a d g | | OPEN | OPEN | NONE | BROWN | |
| 91717-2010 | 91715-0007 | NONE | a b f g h | | OPEN | OPEN | NONE | BROWN | |
| 91717-2011 | 91715-0007 | NONE | NONE | | OPEN | OPEN | NONE | GREEN | |
| 91717-2014 | 91715-0007 | NONE | a c f | | OPEN | OPEN | NONE | NONE | |

NOTES

- + DENOTES TERMINAL VOIDED POSITION
⊕ DENOTES TERMINAL LOADED POSITION
| DENOTES POLARIZING RIB POSITION
- MOLEX HOUSING NO. FOR REFERENCE ONLY

| | | | | | | | | | |
|---|--|------------------------|--|----------------------------|--|----------|--|---|--|
| THIS DRAWING CONTAINS INFORMATION THAT IS PROPRIETARY TO MOLEX ELECTRONIC TECHNOLOGIES, LLC AND SHOULD NOT BE USED WITHOUT WRITTEN PERMISSION | | | | | | | | | |
| DIMENSION UNITS | | SCALE | | CURRENT REV DESC: | | | | | |
| mm | | | | | | | | | |
| GENERAL TOLERANCES (UNLESS SPECIFIED) | | | | EC NO: 701611 | | | | APPLI-MATE 2.5 FEMALE 5MM TERMINAL PITCH (MATL: NYLON PA6) | |
| ANGULAR TOL ± 0.5° | | | | DRWN: MBN02 2022/03/28 | | | | | |
| 4 PLACES ± | | | | CHK'D: MBN02 2022/03/31 | | | | PRODUCT CUSTOMER DRAWING | |
| 3 PLACES ± 0.05 | | | | APPR: SDEVITT 2022/03/31 | | | | | |
| 2 PLACES ± 0.1 | | | | INITIAL REVISION: | | | | DOCUMENT NUMBER 917170001 | |
| 1 PLACE ± 0.2 | | | | DRWN: CFISHER01 2016/05/06 | | | | | |
| 0 PLACES ± | | | | APPR: BRUTTLE 2016/07/01 | | | | DOC TYPE DOC PART REVISION PSD 000 G1 | |
| DRAFT WHERE APPLICABLE MUST REMAIN WITHIN DIMENSIONS | | THIRD ANGLE PROJECTION | | DRAWING | | SERIES | | MATERIAL NUMBER | |
| | | | | A2-SIZE | | 91717 | | SEE CHARTS | |
| | | | | GENERAL MARKET | | CUSTOMER | | SHEET NUMBER | |
| | | | | | | | | 3 OF 4 | |

| 5 CIRCUIT | | | | | | | | |
|-------------|--------------|----------------|-----------------------|---------------|---------------|--------------|------------------------|---------------|
| PART NUMBER | HOUSING USED | LATCH POSITION | REMOVED POSITION KEYS | CONFIGURATION | FIRST ENDWALL | LAST ENDWALL | POLARIZING RIB BETWEEN | COLOUR STRIPE |
| 91717-3001 | 91715-0009 | NONE | NONE | | OPEN | OPEN | NONE | NONE |
| 91717-3002 | 91715-0009 | NONE | b c g h i | | OPEN | OPEN | NONE | GREEN |
| 91717-3003 | 91715-0009 | NONE | ALL | | OPEN | OPEN | NONE | NONE |
| 91717-3004 | 91715-0009 | NONE | NONE | | OPEN | OPEN | NONE | RED |
| 91717-3005 | 91715-0009 | NONE | b c d e f g i j | | OPEN | OPEN | NONE | NONE |
| 91717-3006 | 91715-0109 | NONE | NONE | | OPEN | OPEN | 1&2 | NONE |

| 6 CIRCUIT | | | | | | | | |
|-------------|--------------|----------------|-----------------------|---------------|---------------|--------------|------------------------|---------------|
| PART NUMBER | HOUSING USED | LATCH POSITION | REMOVED POSITION KEYS | CONFIGURATION | FIRST ENDWALL | LAST ENDWALL | POLARIZING RIB BETWEEN | COLOUR STRIPE |
| 91717-4001 | 91715-0011 | NONE | NONE | | OPEN | OPEN | NONE | NONE |
| 91717-4002 | 91715-0011 | NONE | b c d e f g h i k | | OPEN | OPEN | NONE | NONE |
| 91717-4003 | 91715-0011 | NONE | NONE | | OPEN | OPEN | NONE | GREEN |
| 91717-4004 | 91715-0211 | NONE | NONE | | OPEN | OPEN | 2 & 3 | NONE |

| 7 CIRCUIT | | | | | | | | |
|-------------|--------------|----------------|-----------------------|---------------|---------------|--------------|------------------------|---------------|
| PART NUMBER | HOUSING USED | LATCH POSITION | REMOVED POSITION KEYS | CONFIGURATION | FIRST ENDWALL | LAST ENDWALL | POLARIZING RIB BETWEEN | COLOUR STRIPE |
| 91717-5001 | 91715-0013 | NONE | a c e g i k m | | OPEN | OPEN | NONE | NONE |

NOTES

- + DENOTES TERMINAL VOIDED POSITION
- ⊕ DENOTES TERMINAL LOADED POSITION
- | DENOTES POLARIZING RIB POSITION
2. MOLEX HOUSING NO. FOR REFERENCE ONLY

| 8 CIRCUIT | | | | | | | | |
|-------------|--------------|----------------|-----------------------|---------------|---------------|--------------|------------------------|---------------|
| PART NUMBER | HOUSING USED | LATCH POSITION | REMOVED POSITION KEYS | CONFIGURATION | FIRST ENDWALL | LAST ENDWALL | POLARIZING RIB BETWEEN | COLOUR STRIPE |
| 91717-6001 | 91715-0015 | NONE | NONE | | OPEN | OPEN | NONE | NONE |

| 9 CIRCUIT | | | | | | | | |
|-------------|--------------|----------------|-----------------------|---------------|---------------|--------------|------------------------|---------------|
| PART NUMBER | HOUSING USED | LATCH POSITION | REMOVED POSITION KEYS | CONFIGURATION | FIRST ENDWALL | LAST ENDWALL | POLARIZING RIB BETWEEN | COLOUR STRIPE |
| 91717-7001 | 91715-0017 | NONE | NONE | | OPEN | OPEN | NONE | NONE |

| 10 CIRCUIT | | | | | | | | |
|-------------|--------------|----------------|-----------------------|---------------|---------------|--------------|------------------------|---------------|
| PART NUMBER | HOUSING USED | LATCH POSITION | REMOVED POSITION KEYS | CONFIGURATION | FIRST ENDWALL | LAST ENDWALL | POLARIZING RIB BETWEEN | COLOUR STRIPE |
| 91717-8001 | 91715-0019 | NONE | NONE | | OPEN | OPEN | NONE | NONE |

| | | | | | | | | | |
|---|-------|------------------------|--|------------|--|---|--|--------------|--|
| THIS DRAWING CONTAINS INFORMATION THAT IS PROPRIETARY TO MOLEX ELECTRONIC TECHNOLOGIES, LLC AND SHOULD NOT BE USED WITHOUT WRITTEN PERMISSION | | | | | | | | | |
| DIMENSION UNITS | SCALE | CURRENT REV DESC: | | | | | | | |
| mm | | | | | | | | | |
| GENERAL TOLERANCES (UNLESS SPECIFIED) | | EC NO: 701611 | | | | APPLI-MATE 2.5 FEMALE 5MM TERMINAL PITCH (MATL: NYLON PA6) | | | |
| ANGULAR TOL ± 0.5° | | DRWN: MBN02 | | 2022/03/28 | | | | | |
| 4 PLACES ± | | CHK'D: MBN02 | | 2022/03/31 | | PRODUCT CUSTOMER DRAWING | | | |
| 3 PLACES ± 0.05 | | APPR: SDEVITT | | 2022/03/31 | | | | | |
| 2 PLACES ± 0.1 | | INITIAL REVISION: | | | | DOCUMENT NUMBER 917170001 | | | |
| 1 PLACE ± 0.2 | | DRWN: CFISHER01 | | 2016/05/06 | | | | | |
| 0 PLACES ± | | APPR: BRUTTLE | | 2016/07/01 | | DOC TYPE | | DOC PART | |
| DRAFT WHERE APPLICABLE MUST REMAIN WITHIN DIMENSIONS | | THIRD ANGLE PROJECTION | | DRAWING | | SERIES | | SHEET NUMBER | |
| | | | | A2-SIZE | | 91717 | | 4 OF 4 | |
| | | | | SEE CHARTS | | GENERAL MARKET | | | |