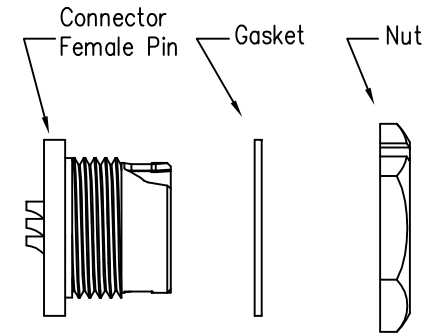
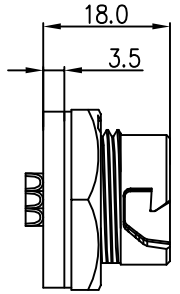


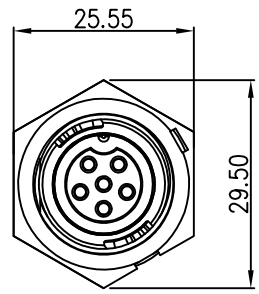
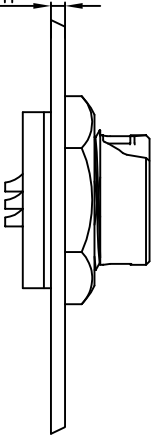
REV.	ECN NO.	DESCRIPTION	SIGN	DATE
C1	N/A	INITIAL DRAWING	Liu	2020/05/17



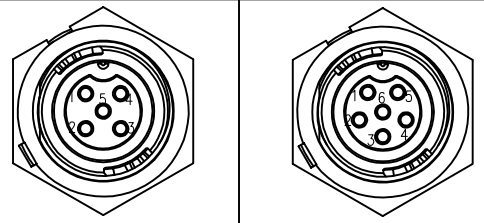
Recommended Panel Cut-Out



Panel T: Max 2.5mm



23XXX635-01
Pin Number



5 Pin

6 Pin

P/N: 23005635-01

P/N: 23006635-01

Pin Assignments Front View

Specification:

1. Operation Temperature: $-45^{\circ}\text{C} \sim 105^{\circ}\text{C}$.
2. Insulation Resistance: $100\text{M}\Omega$ at DC500V.
3. Contact Resistance: $<10\text{m}\Omega$.
4. Withstand Voltage: 1500V AC
5. Operating Current: 10A
6. Operating Voltage: AC 125V
7. Waterproof Rate: IP67 (Mated)
8. Housing: Nylon, Black
9. Female Pin: Copper Alloy, Gold Plated
10. Gasket: Silicon Gray
11. Panel Nut: Nylon, Blue
12. Torque Rate: $0.8 \sim 1.0\text{N} \cdot \text{m}$
13. RoHS Compliant.
14. UL Compliant.
15. Mating Cap P/N: 806-00047-00



UNIT: mm 	DESCRIPTION Middle Series Push Lock Front Mount With Female Pin		PART NO 23XXX635-01	DRAWN BY Liu	DATE 2020/05/17
	TOLERANCE .X ± 0.25 .XX ± 0.15 .XXX ± 0.05 ANGLES $\pm 1^{\circ}$	SCALE: 1:1 SHEET 1 OF 1			
	REV. C1 SIZE A4	* : Inspection Item	CUSTOMER	APPROVED BY Adley	DATE 2020/05/17

THIS INFORMATION IS CONFIDENTIAL AND IS DISCLOSED TO YOU ON CONDITION THAT NO FURTHER DISCLOSURE IS MADE BY YOU TO OTHER THAN CHOGORI PERSONNEL WITHOUT AUTHORIZATION FROM CHOGORI CORP.