

STATOR AND ROTOR

AISI 304 stainless steel.

SHAPED CLOSING LEVER

AISI 304 stainless steel, 4 mm thickness.

NUT

M22x1.5 AISI 304 stainless steel.

PACKING RING

Transparent silicone rubber VMQ O-Ring, hardness 70 Shore A.

INTERNAL GASKETS

Silicone rubber VMQ O-Ring, hardness 70 Shore A.

SCREW

M6x10 AISI 304 stainless steel.

KEY

Polyamide based (PA) technopolymer.

ROTATION

90°.

IP PROTECTION

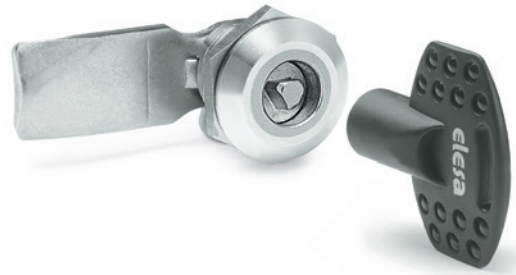
IP66 and IP69K protection class.

STANDARD EXECUTIONS

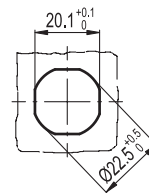
- **CQ/A-SST**: two-wing groove for key.
- **CQ/T-SST**: triangular groove for key.

SPECIAL EXECUTIONS ON REQUEST

- Closing levers in other dimensions.
- Latches and keys supplied separately.
- Laser engravings on the latch front.

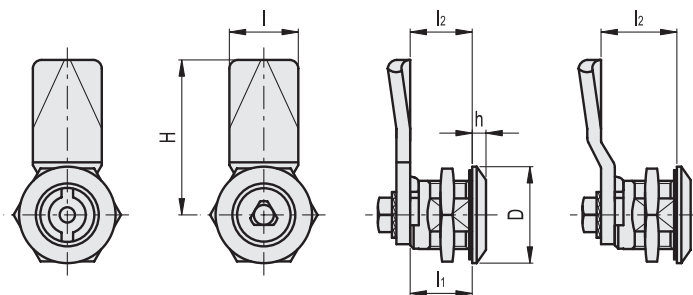


Drilling template



CQ/A-SST

CQ/T-SST



Conversion Table 1 mm = 0.039 inch			
H		I2	
mm	inch	mm	inch
45	1.77	18	0.71
		24	0.94

CQ/A-SST

Code	Description	D	H	I	l1	l2	h	⚖️
421331	CQ/A-45-18-SST	28	45	20	18	18	4	88
421337	CQ/A-45-24-SST	28	45	20	18	24	4	95

CQ/T-SST

Code	Description	D	H	I	l1	l2	h	⚖️
421371	CQ/T-45-18-SST	28	45	20	18	18	4	91
421377	CQ/T-45-24-SST	28	45	20	18	24	4	98

