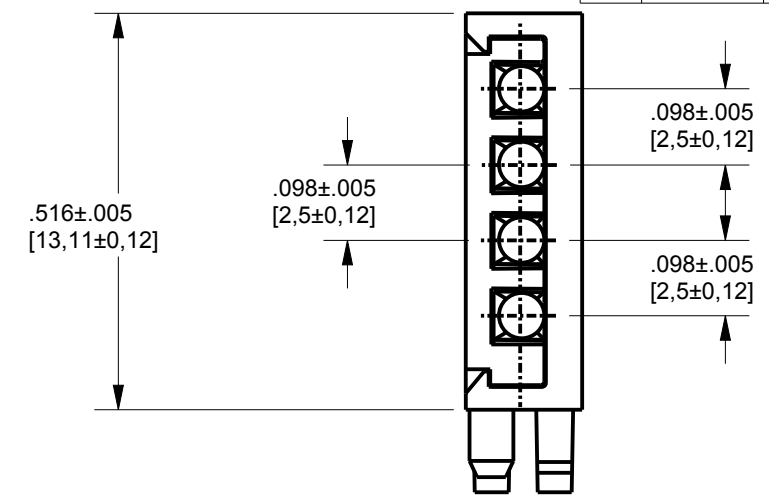
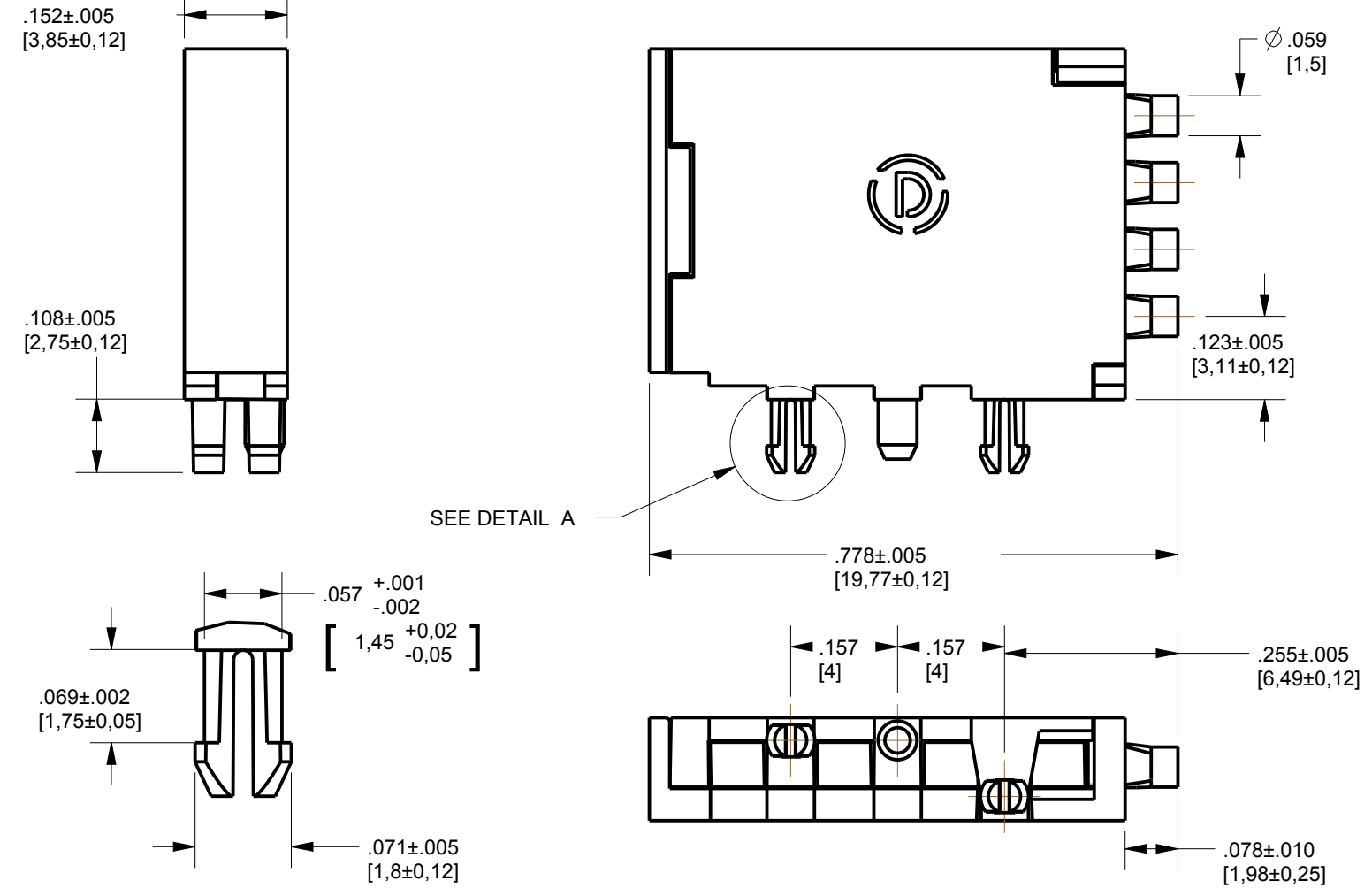


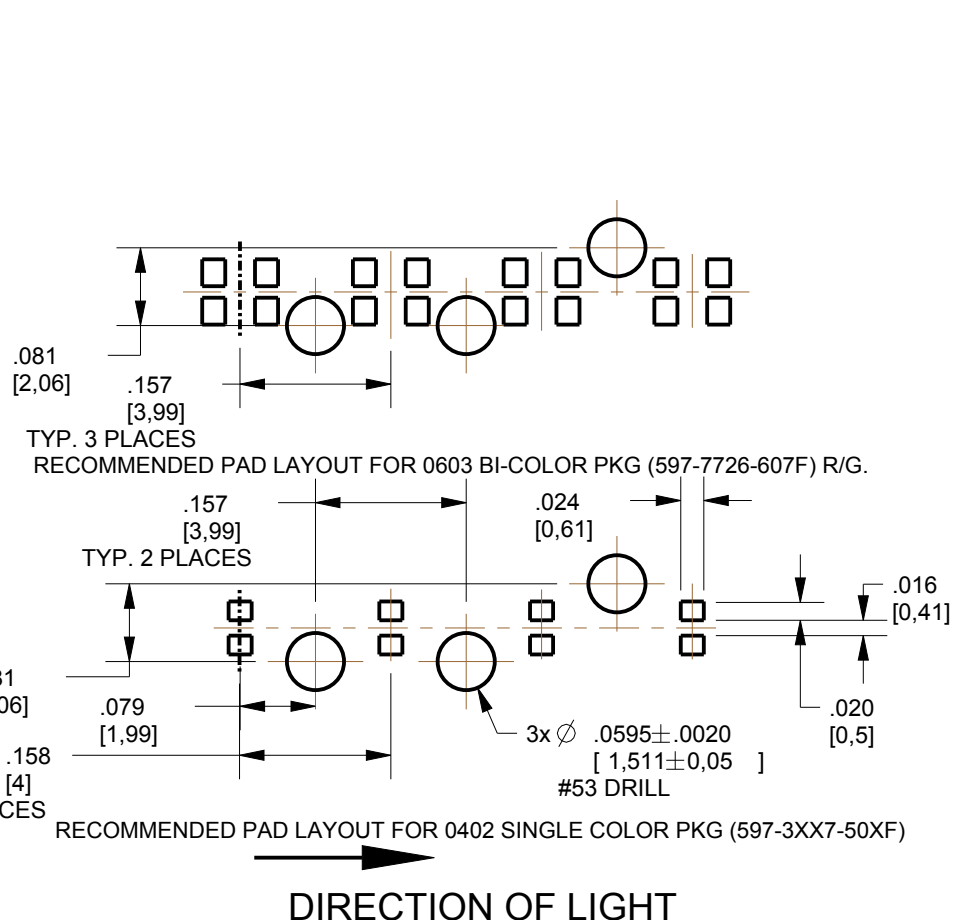
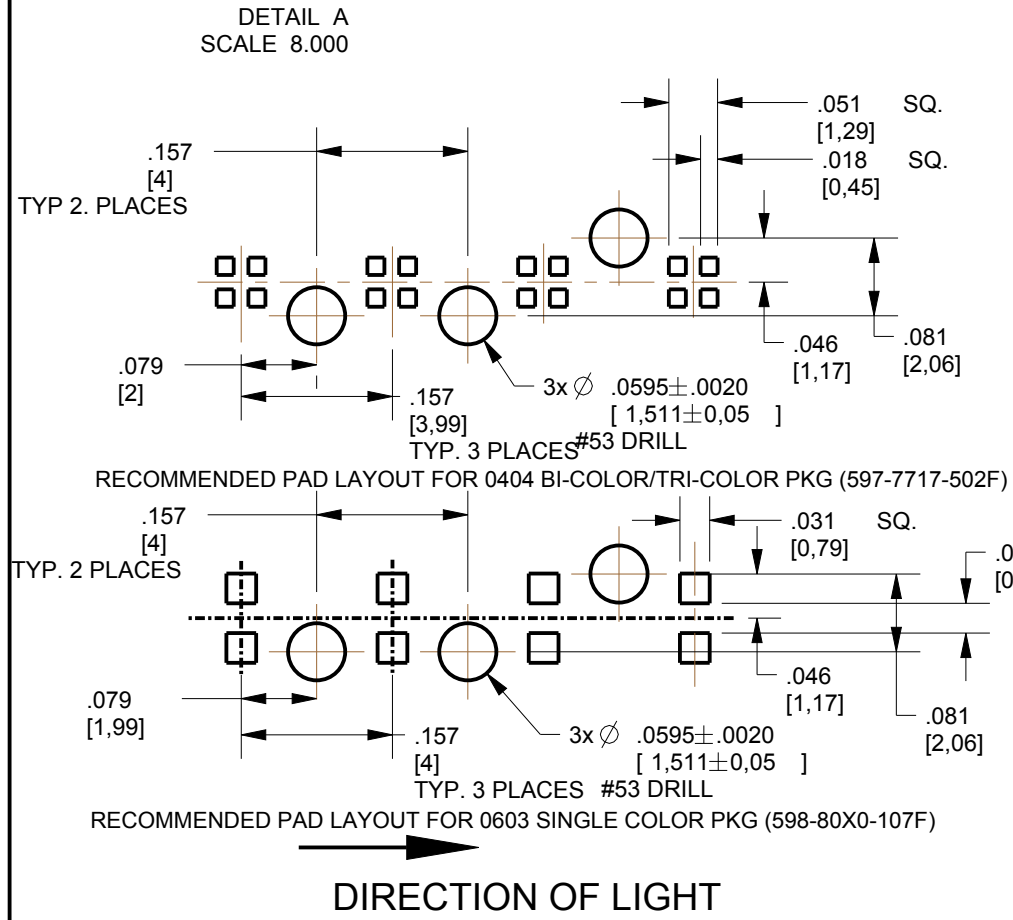
RoHS COMPLIANT 515-1230F LIGHT PIPE ASSEMBLY  
 Part Numbers with the "F" suffix ending are RoHS Compliant. Packaging is marked with "RoHS Compliant" label or equivalent markings.

REV	ECN NO	REVISIONS	DRN	CKD	APP	DATE
A	—	NEW RELEASE	BP	—	NO	6-29-17
B	—	ADDED MAX LED INSERT THICKNESS TO NOTES	LD	—	NO	6-5-18



NOTES:

1. LIGHTPIPE MATERIAL TO BE CLEAR POLYCARBONATE OR EQUIVALENT. AS SPECIFIED BY DIALIGHT ENGINEERING DEPT.
2. HOUSING AND COVER TO BE BLACK POLYCARBONATE OR EQUIVALENT. AS SPECIFIED BY DIALIGHT ENGINEERING DEPT.
3. DIALIGHT P/N 515-1230F
4. MAXIMUM LED THICKNESS FOR THIS LP ASSEMBLY IS .040"(1mm). SM PACKAGES 0402, 0404, 0603, SINGLE COLOR AND BI-COLOR OR SMALLER PACKAGES ARE RECOMMENDED.



THIS DRAWING AND THE CONTENTS HEREIN ARE CONFIDENTIAL AND THE SOLE PROPERTY OF DIALIGHT. REPRODUCTION OF THIS DRAWING OR CONSTRUCTION OF ANY PARTS WITHIN THIS DRAWING ARE FORBIDDEN WITHOUT THE WRITTEN CONSENT OF DIALIGHT.		
SCALE: 4.000 ALL DIM'S IN: INCHES (MM)	DRAWING NUMBER <b>C-18309</b>	REV <b>B</b>
TOLERANCES: UNLESS OTHERWISE SPECIFIED FRACTIONS: $\pm 1/64$ DECIMALS (.XX): $\pm .01$ DECIMALS (.XXX): $\pm .003$ DECIMALS (.XXXX): $\pm .0005$ ANGLES: $\pm 1^\circ$	TITLE LP 4 HIGH DENSITY 1.5mm DIA	
FINISH: -	MATERIAL	
FSCM <b>83330</b>	1501 ROUTE 34 SOUTH FARMINGDALE, NJ 07727	
SHEET 1 OF 1	FAMILY TABLE:	

DIRECTION OF LIGHT

DIRECTION OF LIGHT