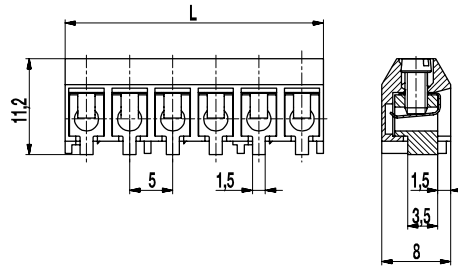
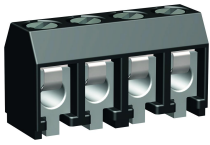
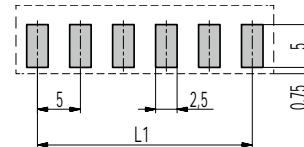


# 950-D-SMD-DS

PCB connector for SMD  
Screw connection



### PCB LAYOUT



L1 = (No. of poles - 1) x pitch  
Solder paste thickness: 0,15 - 0,2 mm

### GENERAL INFORMATION

Pitch	5 mm
No. of poles	2 - 12

### TECHNICAL DATA

Clamping Range	solid / stranded / AWG		
with wire protector	0,34 - 2,5 mm <sup>2</sup> / 0,34 - 2,5 mm <sup>2</sup> / 22 - 14 AWG		
Rated Cross Section	1,5 mm <sup>2</sup>		
Wire Stripping Length	6 mm ± 0,5 mm		
Overvoltage Category	III	III	II
Pollution Severity Level	3	2	2
Rated Voltage	160 V	160 V	320 V
Rated Impulse Voltage	2,5 kV	2,5 kV	2,5 kV
Rated Insulation Voltage	130 V acc. to EN 60998-1		
Rated Current	17,5 A		
Soldering process	Reflow solder		
Torque	0,4 Nm		

### APPROVALS

	Current [A]	Voltage [V]	Group	AWG	[Nm]
	15	300	B	26 - 14	0,4
	15	300	B	26 - 14	0,4

### MATERIAL

Moulding	PA HT, black, V-0
Comparative Tracking Index	CTI ≥ 600
Insulating Group	I
Temperature Range	-40°C up to 120°C; reflow solder temperature peak max. 255°C acc. to DIN EN 61760-1
Terminal body	Tin plated brass
Screw	M2,6; zinc plated steel, blue passivated
Wire protector	Tin plated tin bronze

### OPTIONS / ACCESSORIES

- Consecutive numbering
- Special marking according to drawing
- Self-adhesive marking strip BST-5,00 [1]
- Special packaging on request: Tray - Bar magazine

[1] To be fitted after reflow soldering process

### CONFIGURATIONS

Poles	Part number	Article number	Length (L)	Packaging	PU	Tape Width	Tape Height
2	950-D-SMD-DS/02	20.879.502	10,00 mm	Box	250		
3	950-D-SMD-DS/03	20.879.503	15,00 mm	Box	250		
4	950-D-SMD-DS/04	20.879.504	20,00 mm	Box	100		
5	950-D-SMD-DS/05	20.879.505	25,00 mm	Box	100		
6	950-D-SMD-DS/06	20.879.506	30,00 mm	Box	100		
2	950-D-SMD-DS/02-T&R	20.879.502.A00	10,00 mm	Tape-on-Reel	500	32 mm	12,3 mm
3	950-D-SMD-DS/03-T&R	20.879.503.A00	15,00 mm	Tape-on-Reel	500	44 mm	12,0 mm
4	950-D-SMD-DS/04-T&R	20.879.504.A00	20,00 mm	Tape-on-Reel	500	44 mm	12,0 mm
5	950-D-SMD-DS/05-T&R	20.879.505.A00	25,00 mm	Tape-on-Reel	500	44 mm	12,0 mm
6	950-D-SMD-DS/06-T&R	20.879.506.A00	30,00 mm	Tape-on-Reel	500	56 mm	12,0 mm

