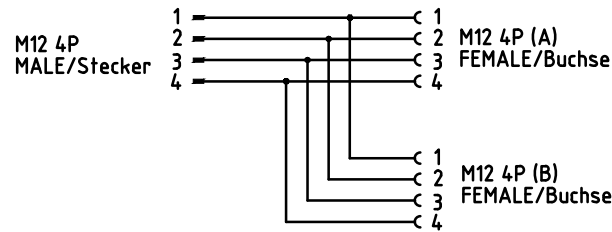


**CONNECTOR SPECIFICATION:
Steckverbinder-Eigenschaften:**

VOLTAGE RATING Bemessungsspannung	250V
AMPERAGE RATING Betriebsstrom	max. 4 AMPS
PROTECTION Schutzart	IP67
OPERATING TEMPERATURE Temperaturbereich	-25°C TO +90°C

**WIRING DIAGRAM
Verdrahtungsplan**



(...) DIM. FOR INFORMATION
(...) Informationsmaß

POS. Pos.	COMPONENT Einzelteil	MATERIAL Material	FINISH Oberfläche
1	INSERT Kontaktträger	PUR / BLACK PUR / schwarz	---
2	CONTACT SOCKET Kontakt	COPPER ALLOY Kupferlegierung	GOLD-PLATED vergoldet
3	COUPLING NUT MALE Schraubverschluß Stecker	BRASS Messing	NICKEL-PLATED vernickelt
4	COUPLING NUT FEMALE Schraubverschluß Buchse	BRASS Messing	NICKEL-PLATED vernickelt
5	OVERMOULD Umspritzung	PUR / YELLOW PUR / gelb	---
6	O-RING (FEMALE) O-Ring (Buchse)	FPM / RED FPM / rot	---

DESCRIPTION EC NO: IPG2014-0857 DRWN: BBRAUCH 08.04.14 CHKD: REISSNER APPR: CBURGER 2013/04/17	QUALITY SYMBOLS	GENERAL TOLERANCES (UNLESS SPECIFIED)	DIMENSION STYLE MM ONLY	SCALE 2:1	DESIGN UNITS METRIC	THIRD ANGLE PROJECTION
	▽ = 0	mm INCH	BRAUN BY DATE	SPL YS M12 4P AC MA FE FE YL ----- molex		
	▽ = 0	4 PLACES ±--- ±---	BBRAUCH 2013/03/12			
		3 PLACES ±--- ±---	CHECKED BY DATE			
	2 PLACES ±0.05 ±---	APOHL 2013/04/17				
	1 PLACE ±0.3 ±---	APPROVED BY DATE	MATERIAL NO.	DOCUMENT NO.	SHEET NO.	
	0 PLACE ±0.5 ±---	CBURGER 2013/04/17	1200685172	SD-120068-152	1 OF 1	
A1		DRAFT WHERE APPLICABLE MUST REMAIN WITHIN DIMENSIONS	SIZE A3	THIS DRAWING CONTAINS INFORMATION THAT IS PROPRIETARY TO MOLEX INCORPORATED AND SHOULD NOT BE USED WITHOUT WRITTEN PERMISSION		