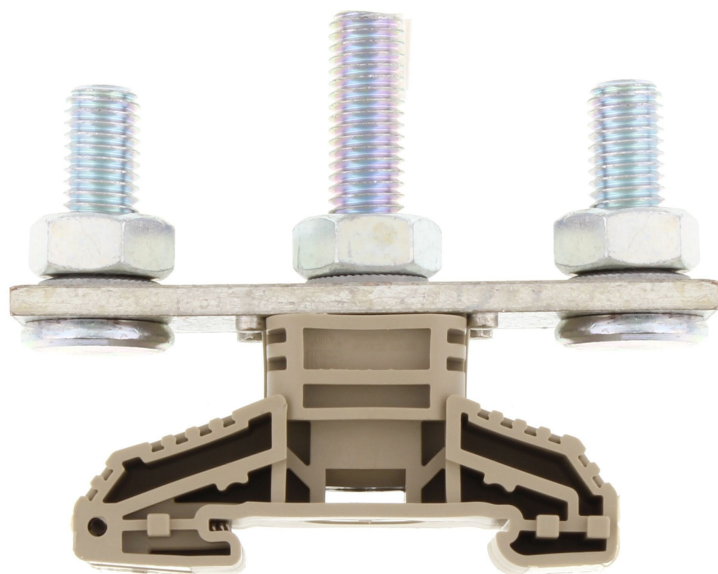


## 17007.2 HSK 120/M10 B/B BG



High-power stud terminal, Stud connection, Mounting type: Mounting rail TS 35/7.5, Rated cross-section: 120 mm<sup>2</sup>, Width: 32 mm, Colour: Beige

### Business data

Article number	<u>17007.2</u>
Article name	HSK 120/M10 B/B BG
GTIN (EAN)	4044211131524
Colour	Beige
Packaging unit	10
Quantity unit	PC
Weight per piece (not including packaging)	214 g
Weight per piece (including packaging)	220.9 g
Unit of weight	G
Customs number	85369010
Country of origin	DE
Product description	High-power stud terminal

### Technical data

#### Dimensions

Length	67 mm
Length with TW/ADH	156 mm
Width	32 mm
Height TS 35/7.5	73.5 mm
Height TS 35/7.5 with TW/ADH	78.5 mm

#### Ratings

Rated voltage	1000 V
Rated current	269 A
Rated cross-section	120 mm <sup>2</sup>
Rated impulse voltage	8 kV
Overvoltage category	III
Contamination degree	3
Maximum power dissipation for nominal condition	8.61 W

#### Connection data

Connection principle	Stud connection
Connection position	Top
Connections	2
Number of terminals per level	2
Number of levels	1
Wire cross-section AWG, min.	10
Wire cross-section AWG, max.	250 Kcmil
Bolt head	Hexagon
Bolt thread	M 10
Tightening torque, min.	10 Nm
Tightening torque, max.	20 Nm
Contact wire range	? 120 mm <sup>2</sup>

#### Materials

Insulation housing	Polyamide 6.6
Flammability class UL 94	V-0
Working temperature, min.	-40 °C
Working temperature, max.	120 °C

---

### Technical data

---

#### Further technical data

Mounting type	Mounting rail TS 35/7,5
Number of cross-connection channels	1
DIN 46234 / 1 cable lug per side, min.	6 mm <sup>2</sup>
DIN 46234 / 1 cable lug per side, max.	120 mm <sup>2</sup>
DIN 46234 / 2 cable lugs per side, min.	6 mm <sup>2</sup>
DIN 46234 / 2 cable lugs per side, max.	120 mm <sup>2</sup>
DIN 46235: 1 cable lug per side, max.	95 mm <sup>2</sup>
DIN 46235: 1 cable lug per side, min.	10 mm <sup>2</sup>
DIN 46235: 2 cable lugs per side, min.	10 mm <sup>2</sup>
DIN 46235: 2 cable lugs per side, max.	95 mm <sup>2</sup>

#### Environmental Product Compliance

REACH Conform	yes
REACH Reference date	2022-01-17
REACH Candidate Substance Note	No
RoHS Conform	yes

### Approvals

#### Standards and regulations

EAC approval	TR ZU 004/2011
EAC approval granted	yes

#### CSA approval

CSA approval	C22.2 No 158
CSA approval granted	yes
CSA Usegroup C: rated voltage	1000 V
CSA Usegroup C: rated current	225 A
CSA Usegroup D: rated voltage	1000 V
CSA Usegroup D: rated current	220 A
CSA wire cross-section AWG, max.	2/0
CSA torque, max.	20.3 Nm

#### CSAus approval

CSAus approval	UL 1059
CSAus approval granted	yes
CSAus Usegroup C: rated voltage	1000 V
CSAus Usegroup C: rated current	225 A
CSAus Usegroup D: rated voltage	1000 V
CSAus Usegroup D: rated current	220 A
CSAus wire cross-section AWG, max.	2/0
CSAus torque, max.	20.3 Nm

#### cUL Recognized

cUL approval	C22.2 No 158
cUL Usegroup E: rated voltage	1000 V
cUL Usegroup E: rated current	225 A
cUL wire cross-section AWG, max.	250 Kcmil
cUL torque, max.	20.3 Nm
cUL wire material	Cu
cUL Recognized	1

### Approvals

#### KEMA KEUR approval

KEMA KEUR approval	EN 60947-7-1:2009
KEMA KEUR approval granted	yes
KEMA rated voltage	1000 V
KEMA rated current	269 A
KEMA rated impulse voltage	8 kV
KEMA wire cross-section (DIN 46234), min.	6 mm <sup>2</sup>
KEMA wire cross-section (DIN 46234), max.	120 mm <sup>2</sup>
KEMA wire cross-section (DIN 46235), min.	10 mm <sup>2</sup>
KEMA wire cross-section (DIN 46235), max.	95 mm <sup>2</sup>

#### UL Recognized

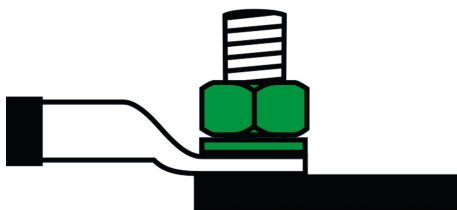
UL approval	UL 1059
UL Usegroup E: rated voltage	1000 V
UL Usegroup E: rated current	255 A
UL wire cross-section AWG, max.	250 Kcmil
UL torque, max.	179.7 Lb In.
UL wire material	Cu
UL factory wiring	1
UL field wiring	1
UL Recognized	1

### Media

**EAC**



**C <sup>®</sup> UL US**



**C <sup>®</sup> UL US**

### Accessories

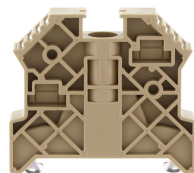
#### Protective hood



Cover profile, Length: 156 mm, Width: 32 mm, Colour: Yellow

Article number	Article name	GTIN (EAN)	Packaging unit
<u>17026.8</u>	AD 120 YE	4044211131715	20 ST

#### End stop



End stop, Mounting type: Mounting rail TS 35/7.5, Width: 9.5 mm, Colour: Beige

Article number	Article name	GTIN (EAN)	Packaging unit
<u>2828.0</u>	ES 35/K/ST BG	4044211055547	50

#### Cross-connector



Cross-connector, No. of poles: 2, Mounting type: Can be screwed on, Width: 62 mm, Rated cross-section: 120 mm<sup>2</sup>, Colour: natural

Article number	Article name	GTIN (EAN)	Packaging unit
<u>17014.0</u>	QS 2/120/10	4044211131609	10 ST



Cross-connector, No. of poles: 3, Mounting type: Can be screwed on, Width: 82 mm, Rated cross-section: 35 mm<sup>2</sup>, Colour: natural

Article number	Article name	GTIN (EAN)	Packaging unit
<u>17029.2</u>	QS 3 HSK 35/M6 - M10/2	4044211139742	1 ST

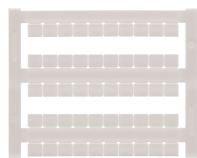


Cross-connector, No. of poles: 3, Mounting type: Can be screwed on, Width: 96 mm, Rated cross-section: 120 mm<sup>2</sup>, Colour: natural

Article number	Article name	GTIN (EAN)	Packaging unit
<u>17015.0</u>	QS 3/120/10	4044211131593	10 ST

#### Quick marking

## 17007.2 HSK 120/M10 B/B BG



Terminal marker / Pocket Maxicard, Length: 5 mm, Width: 6 mm, Colour: White

Article number	Article name	GTIN (EAN)	Packaging unit
<u>4702.7</u>	PMC SB 6/50 WH	4044211089986	500 ST

## Partition plate



Partition plate, Width: 2 mm, Colour: Beige

Article number	Article name	GTIN (EAN)	Packaging unit
<u>17022.2</u>	TW 35-120/B/B BG	4044211131678	20 ST