

# SPICE-Equivalent circuit model library

Table 1. Equivalent circuit data

Part Number	L ( $\mu$ H)	F <sub>res</sub> (MHz)	C1 (pF)	R1 ( $\Omega$ )	R2 Nominal DCR of winding ( $\Omega$ )
HCM1A1307-R22-R	0.22	125.4	7.32	457.43	0.00058
HCM1A1307-R33-R	0.33	95.3	8.45	540.16	0.00083
HCM1A1307-R47-R	0.47	75.0	9.57	624.44	0.0009
HCM1A1307-1R0-R	1	45.0	12.51	851.00	0.0017
HCM1A1307-1R2-R	1.2	39.8	13.34	917.05	0.00198
HCM1A1307-1R5-R	1.5	34.2	14.44	1004.91	0.0021
HCM1A1307-1R8-R	1.8	30.2	15.40	1082.91	0.0028
HCM1A1307-2R2-R	2.2	26.4	16.54	1175.77	0.00296
HCM1A1307-3R3-R	3.3	20.1	19.09	1388.42	0.0037
HCM1A1307-4R7-R	4.7	15.8	21.63	1605.05	0.0067
HCM1A1307-5R6-R	5.6	14.0	23.02	1724.59	0.0075
HCM1A1307-6R8-R	6.8	12.3	24.66	1867.49	0.01
HCM1A1307-7R8-R	7.8	11.2	25.88	1975.55	0.01
HCM1A1307-8R2-R	8.2	10.8	26.35	2016.48	0.012
HCM1A1307-100-R	10	9.5	28.26	2187.41	0.016
HCM1A1307-120-R	12	8.4	30.15	2357.19	0.017
HCM1A1307-150-R	15	7.2	32.63	2583.02	0.022
HCM1A1307-220-R	22	5.6	37.36	3022.20	0.031
HCM1A1307-330-R	33	4.2	43.13	3568.78	0.042
HCM1A1307-560-R	56	2.9	52.01	4432.89	0.055

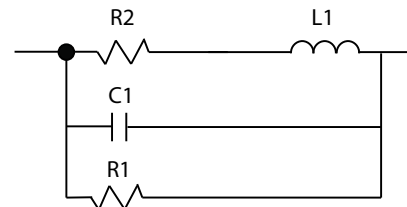


Figure 1. Equivalent circuit

## Disclaimer

The data provided is for reference and is intended for evaluation purposes only. Users should verify all intended results in the end application.

**Eaton**  
**Electronics Division**  
 1000 Eaton Boulevard  
 Cleveland, OH 44122  
 United States  
[www.eaton.com/electronics](http://www.eaton.com/electronics)

© 2018 Eaton  
 All Rights Reserved  
 Printed in USA  
 Publication No. HCM1A1307 Spice  
 April 2018