

# General Electronic Devices

Makers of active and passive components  
 Quartz Crystal \* Oscillators \* Synthesizer \* Filters  
 Micro-Hybrid Assembly Services

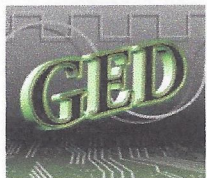
## SMD914E.3B-ED-161.1328MHz

Surface Mount-9x14mm Ceramic Package  
 6-"J" lead Oscillator  
 Output: Differential PECL  
 Operating Voltage: 3.3V

Electrical Specifications

This device is Lead free / ROHs compliant

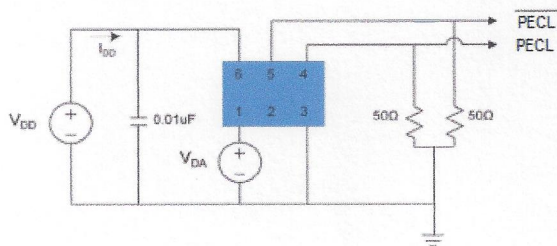
Item	Symbol	Specification	
Output frequency	fo	161.1328MHz	
Power source voltage	Operating voltage	Vcc	3.3 V ± 0.3 V
Temperature range	Storage temperature	TSTG	-55 °C to +125 °C
	Operating temperature	TOPR	0 °C to +70 °C
Frequency Tolerance		± 20ppm @ 25°C	
Frequency Stability	f/fo	50ppm	
Current consumption	Icc	80mA Max.	
Output disable current	Ioe	20 mA Max.	
Duty	T <sub>wt</sub>	45% to 55%	
Output voltage	V	Vol: 1.7V	Voh: 2.2V
Output load condition	RL	124 ohms output to vdd; 82 ohms output to ground	
Output enable input voltage	V <sub>ih</sub>	70% Vcc Min.	
Output disable input voltage	V <sub>il</sub>	30% Vcc Max	
Output rise fall time	t <sub>r</sub> / t <sub>f</sub>	400 ps Max.	
Oscillator start up time	t <sub>osc</sub>	10 ms Max.	
Jitter *4	t <sub>RJ</sub>	3 ps Typ.	
	t <sub>RMS</sub>	3 ps Typ.	
	T <sub>p-p</sub>	25 ps Typ.	
Phase jitter	T <sub>PJ</sub>	2.5 ps Max.	
Phase Noise		-120dbc/HZ Typ	



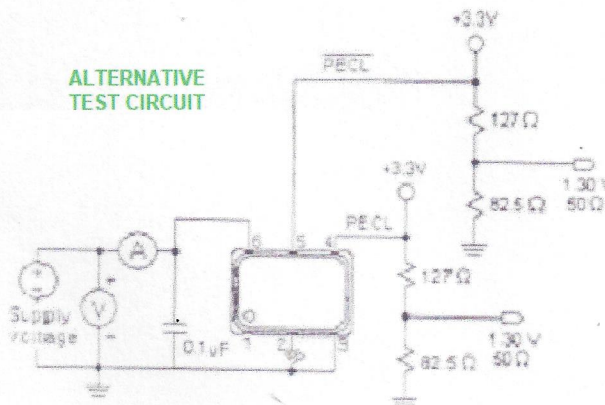
# General Electronic Devices

Makers of active and passive components  
 Quartz Crystal \* Oscillators \* Synthesizer \* Filters  
 Micro-Hybrid Assembly Services

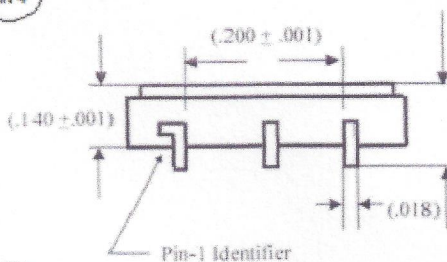
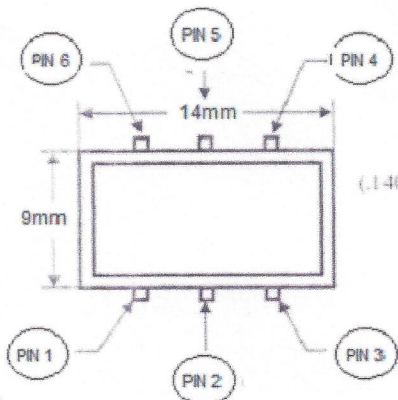
TEST CIRCUIT



ALTERNATIVE TEST CIRCUIT



## DRAWING OUTLINE



( Unit inches )

PIN CONFIGURATION	
Pin 1	N/C or High Enable
Pin 2	N/C or High Enable
Pin 3	GND
Pin 4	OUTPUT
Pin 5	OUTPUT
Pin 6	VDD



# General Electronic Devices

Makers of active and passive components  
Quartz Crystal \* Oscillators \* Synthesizer\* Filters  
Micro-Hybrid Assembly Services

## PART NUMBERING GUIDE

