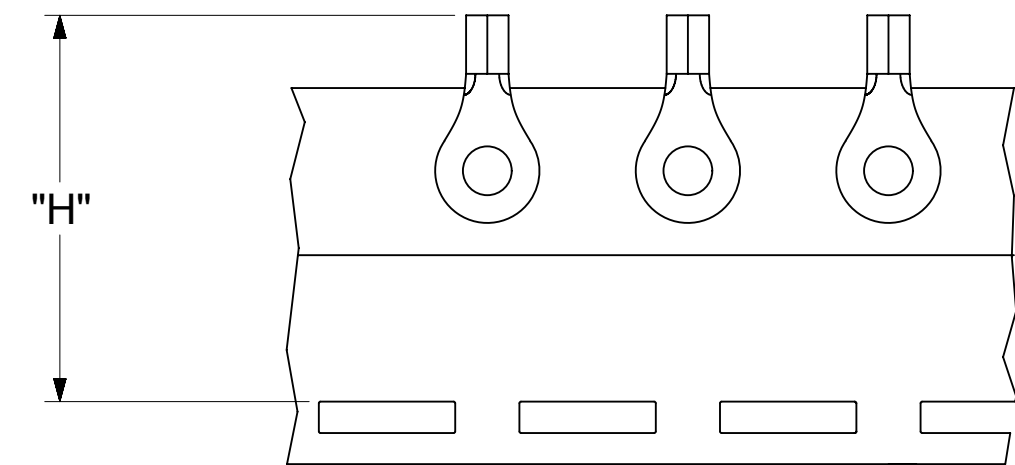
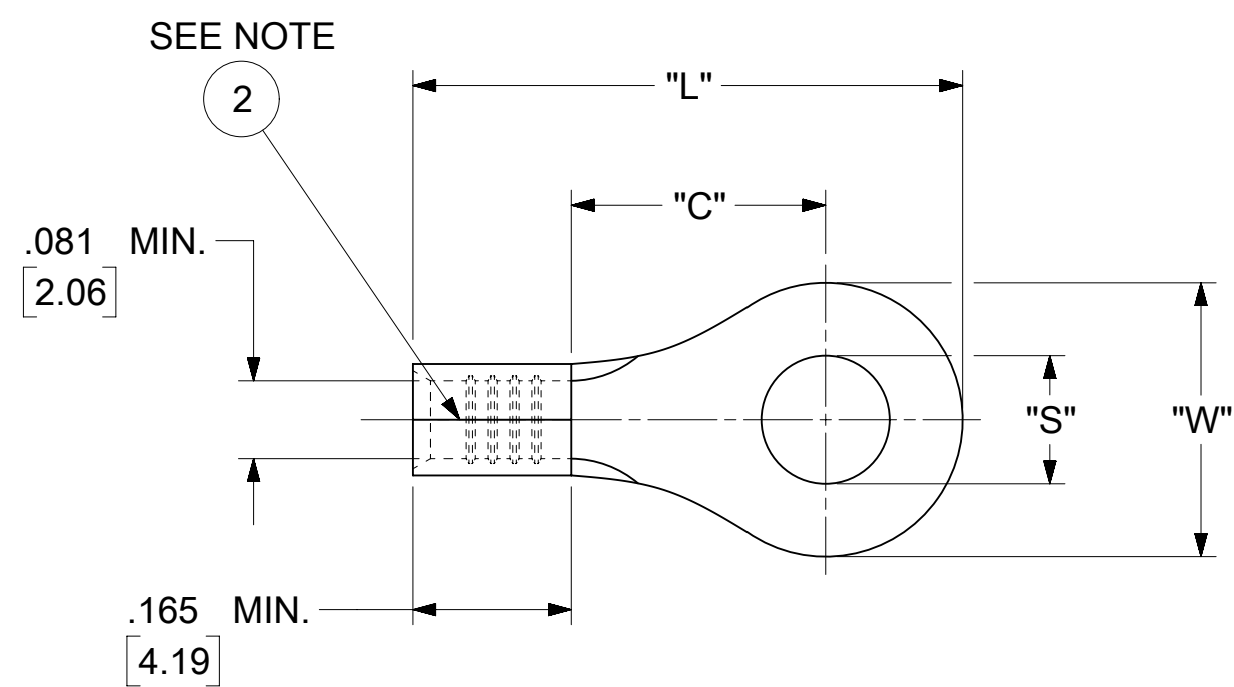


LOOSE PIECE		TAPE MOUNTED		SPECIFICATIONS					
MATERIAL NUMBER	ENGINEERING NUMBER	MATERIAL NUMBER	ENGINEERING NUMBER	STUD SIZE	"S" ±.005 [0.13]	"W" ±.010 [0.25]	"C" MIN.	"L" MAX.	"H"
192030077	BB-U-123-06	---	---	6	.146 [3.71]	.250 [6.35]	.209 [5.31]	.560 [14.22]	---
192030079	BB-U-125-14	---	---	14	.265 [6.73]	.467 [11.86]	.388 [9.86]	.837 [21.26]	---
192030274	BB-U-125-56	---	---	56	.328 [8.33]				
192030150	BB-U-137-06	192030082	BB-U-137-06T	6	.146 [3.71]	.312 [7.92]	.285 [7.24]	.645 [16.38]	1.155 [29.34]
192030083	BB-U-137-08	192030084	BB-U-137-08T	8	.173 [4.39]				
192030085	BB-U-137-10	192030086	BB-U-137-10T	10	.198 [5.03]				



PARTS ON TAPE

NOTES:

- MATERIAL: PURE NICKEL (STOCK THICKNESS .031±.001[0.79])
PLATING: NONE
- SEAM OPENING
- WIRE SIZE: 16 - 14 AWG
1.0 - 2.5 MM²
- "UL" LISTING #E32244
"CSA" LISTING #18689
- ALL DIMENSIONS IN INCHES/[MM].
- PARTS ARE ROHS COMPLIANT.
- DIMS. SHOWN ARE FOR REFERENCE ONLY.

SYMBOLS	THIS DRAWING CONTAINS INFORMATION THAT IS PROPRIETARY TO MOLEX ELECTRONIC TECHNOLOGIES, LLC AND SHOULD NOT BE USED WITHOUT WRITTEN PERMISSION									
	DIMENSION UNITS		SCALE		CURRENT REV DESC: MIGRATION TO ECTR/NX					
	INCH/MM		NTS		EC NO: 620820 DRWN: ABENJAMINLW 2019/07/10 CHK'D: GROJAS01 2019/07/17 APPR: JMACNEIL 2019/08/06 INITIAL REVISION: DRWN: EMF 1987/02/03 APPR: JMACNEIL 2019/08/06					
	GENERAL TOLERANCES (UNLESS SPECIFIED)									
▽ = 0	4 PLACES	±	---	±	---	PRODUCT CUSTOMER DRAWING DOCUMENT NUMBER: 192030077 DOC TYPE: PSD DOC PART: 000 REVISION: A MATERIAL NUMBER: SEE TABLE CUSTOMER: GENERAL MARKET SHEET NUMBER: 1 OF 1				
▽ = 0	3 PLACES	±	---	±	.005					
▽ = 0	2 PLACES	±	0.13	±	.01					
▽ = 0	1 PLACE	±	0.25	±	---	DRAFT WHERE APPLICABLE MUST REMAIN WITHIN DIMENSIONS THIRD ANGLE PROJECTION DRAWING: C-SIZE SERIES: 19203				
☒ = 0	0 PLACES	±	---	±	---					
■ = 0	ANGULAR TOL ± 0.5 °									

NOTES:

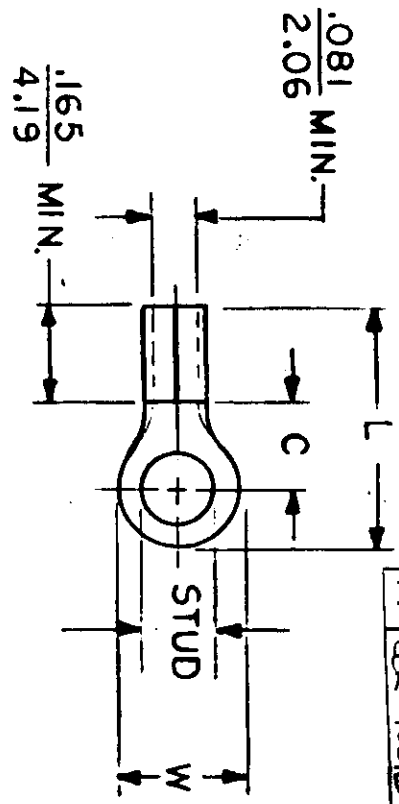
① MAT'L: PURE NICKEL

PLATING: NONE

STUD SIZES: (±.005)

- 02 = .094 413 = .413
- 04 = .119 209 = .209
- 06 = .146
- 08 = .173
- 10 = .198
- 14 = .265
- 56 = .328
- 38 = .390

ALL DIMENSIONS = INCHES
M M



FILE NO. BB-CD-101-04

A Show -123 & -125 in detail
EOR 70818 @ 97-4-29

WIRE SIZE: 16-14 AWG
1.0-2.5 MM²

PART NUMBER	"W"	"C" MIN.	"L" MAX.	AVAILABLE STUD SIZES	TITLE: TEMP-TERM (1200°)	SCALE: NTS		DATE	DRAWN. BY: EMF	CHKD. BY:	APPRD. BY:	TERMINAL KRYPTITE 100-SERIES	DWG. NO. A	CUSTOMER DWG.
						REFERENCE	SCALE							
BB-U-123-	±.010	.534 13.56	.554 14.07	1.036 26.31	10,14,56,38,413									
BB-U-123-		.250 6.35	.209 5.31	.560 14.22	02,04,06,08									
BB-U-125-		.467 11.86	.388 9.86	.837 21.26	10,14,56									
BB-U-137-		.312 7.92	.285 7.24	.645 16.38	04,06,08,10 209									
		.342 8.69	.310 7.87	.696 17.68	04,06,08,10									
DIMENSIONAL TOLERANCES UNLESS OTHERWISE SPECIFIED						REFERENCE	SCALE	DATE	DRAWN. BY: EMF	CHKD. BY:	APPRD. BY:	TITLE: TEMP-TERM (1200°)		
FRAC.						DEC.	ANG.					TERMINAL KRYPTITE 100-SERIES		
±						±	±					DWG. NO. A CUSTOMER DWG.		

