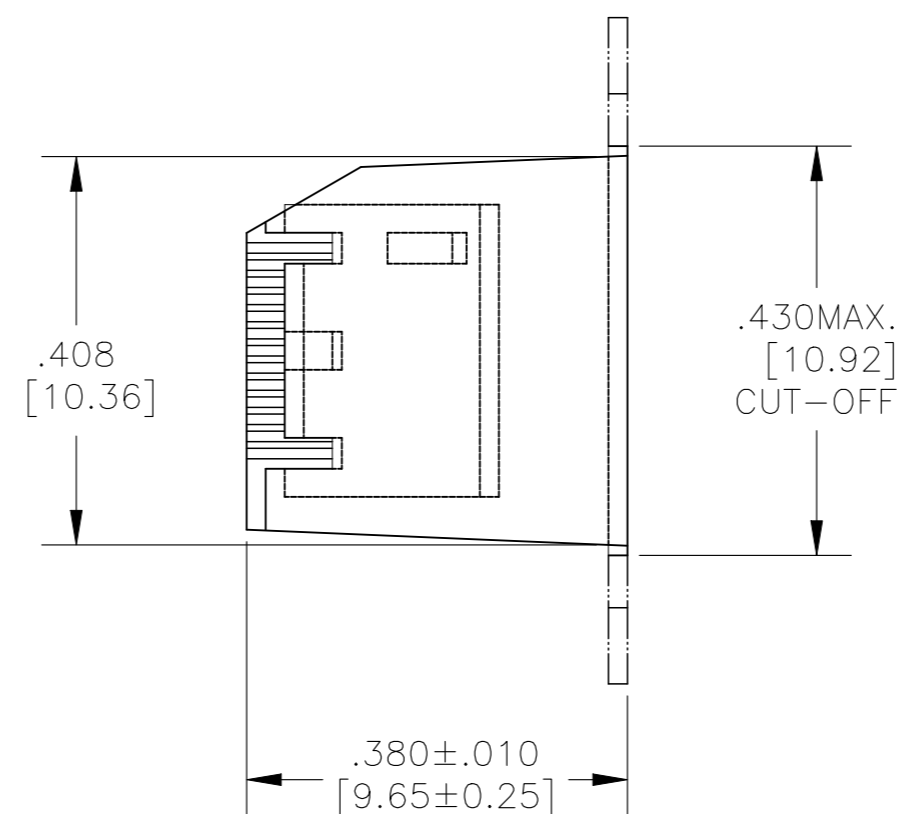
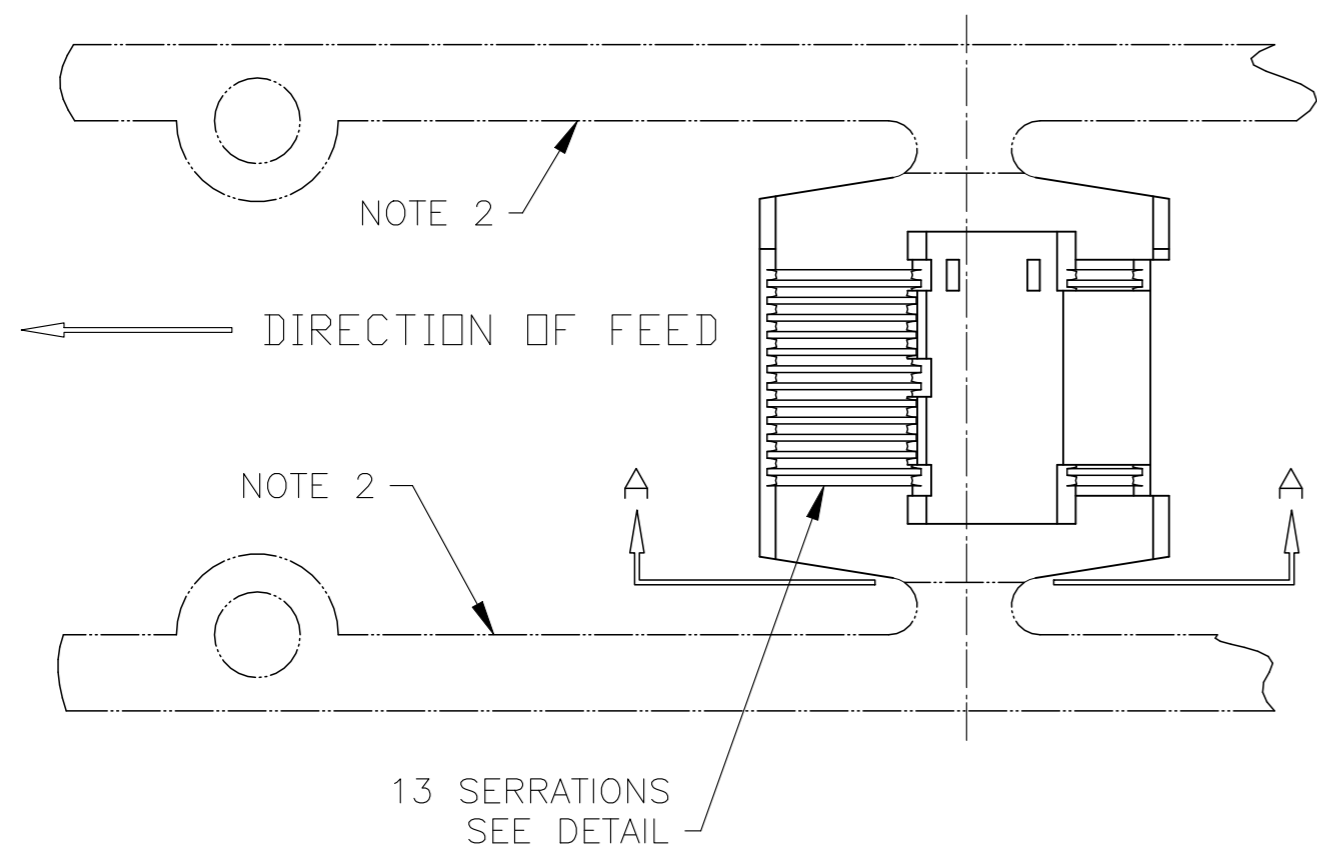
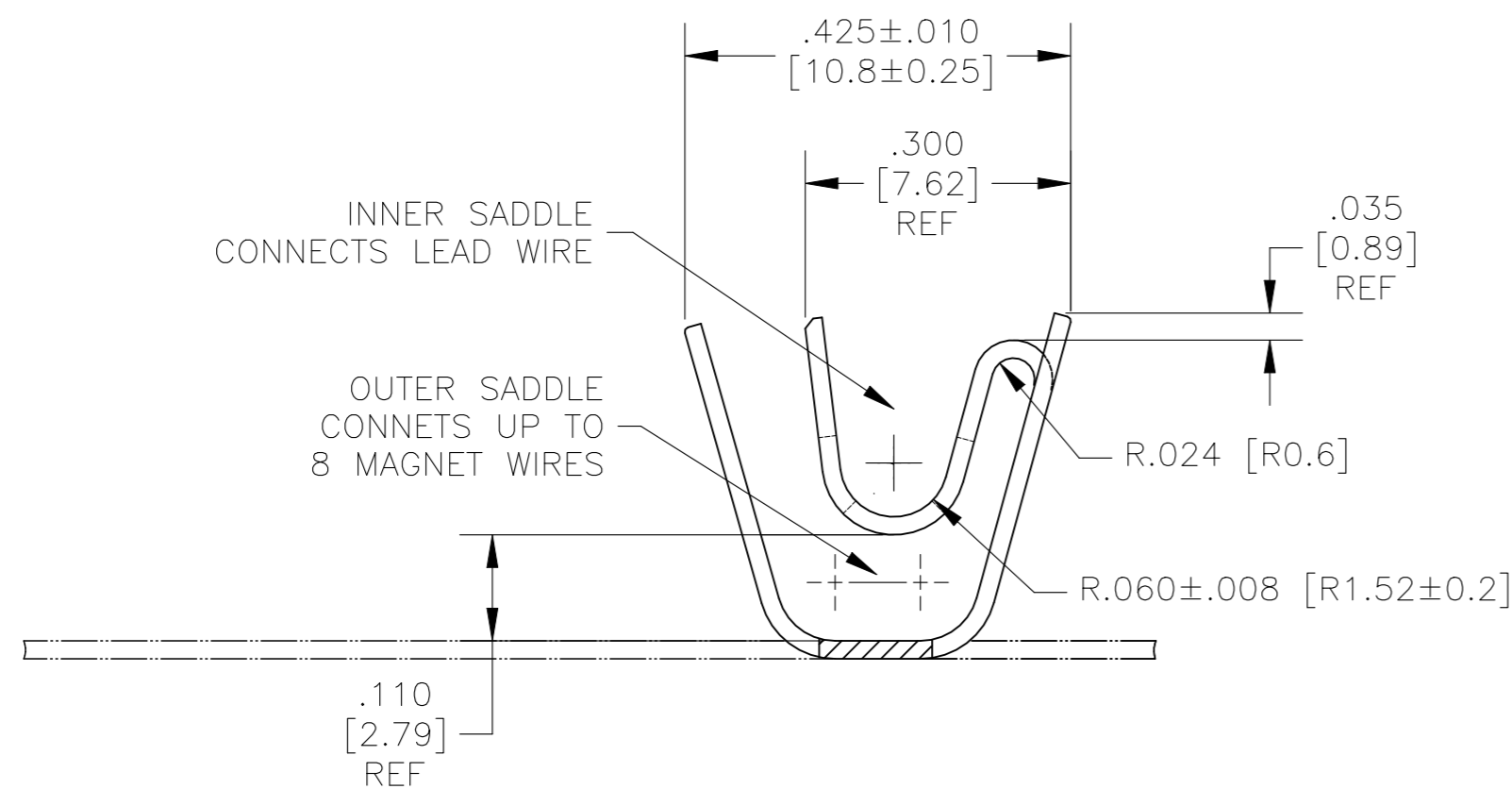


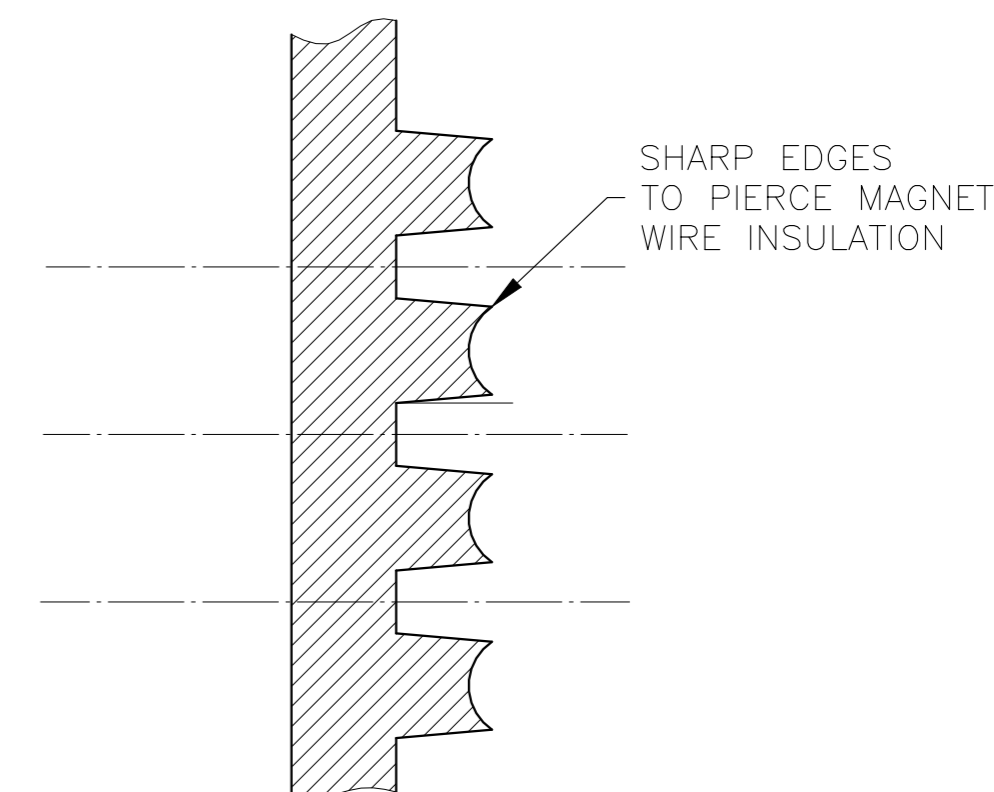
REVISIONS					
P	LTR	DESCRIPTION	DATE	DWN	APVD
A4		REVISED PER ECR-22-136655	21APR2022	JJ	TD



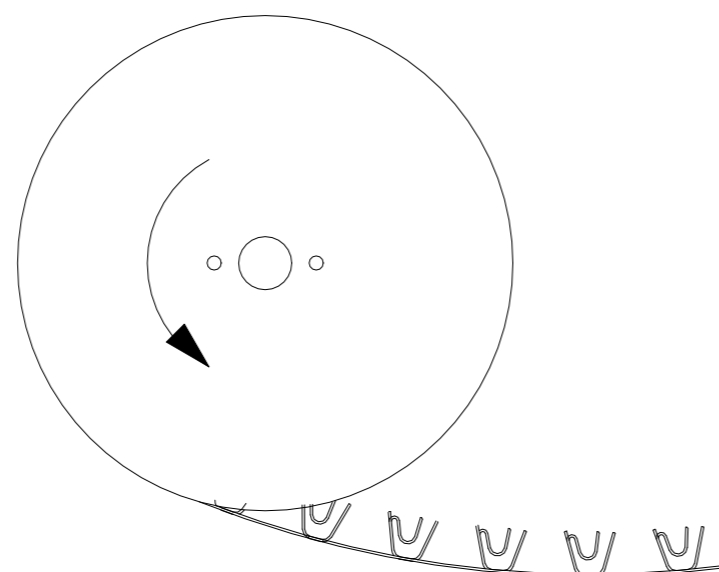
- SPECIFICATIONS  
 LEAD WIRE : #14-#10 AWG (2.0-5.6mm<sup>2</sup>) (4,000-11,000 CMA)  
 2 WIRES MAX  
 MAGNET WIRE: #20-#11 AWG (0.81-2.30mm)  
 (1,000-9,000 CMA) 8 WIRES MAX  
 TOTAL WIRE: 4,000-40,000 CMA  
 CRIMP HEIGHT: (TOTAL CMA + 57,000) / 737,000
  - CARRIER STRIPS (PHANTOM LINES) TO SCRAP DURING INSERTION.
- 3 FINISH: PRE-TIN PLATE OVER COPPER UNDERPLATE.



SERRATION DETAIL  
SCALE 40X



TERMINALS TO UNWIND  
FROM REELS AS SHOWN:



3		111-000-001		1601953-1	
FINISH		REFERENCE PART NUMBER		TYCD PART NUMBER	
THIS DRAWING IS A CONTROLLED DOCUMENT.		<b>STE</b> TE Connectivity		POWER SPLICE	
DIMENSIONS: INCHES 		TOLERANCES UNLESS OTHERWISE SPECIFIED: 0 PLC ± - 1 PLC ± - 2 PLC ± .01[0.13] 3 PLC ± .005[0.026] 4 PLC ± - ANGLES ± 3°		DWN 18JUL2002 CHK G JACONO 18JUL2002 APVD G JACONO 18JUL2002 PRODUCT SPEC APPLICATION SPEC 114-13093 WEIGHT 0.000000 CUSTOMER DRAWING	
MATERIAL BRASS, HALF HARD		FINISH -		SIZE A2	CAGE CODE 00779
		DRAWING NO C=1601953		RESTRICTED TO -	SCALE 1:1
		SHEET 1 of 1		REV A4	