



Product Change Notificatio

TE Connectivity

Product Change Notification: P-23-024101

PCN Date: 19-FEB-23

TE would like to inform you of the following change(s) to the listed TE Connectivity Product. In case of any further questions about this change(s), please contact your TE Connectivity Sales Engineer. Affected part, drawing and/or specification numbers are listed on the attached sheet(s).

General Product Description:
Explanation for a new duplication production tool 11-0571422 for Generation Y

Description of Changes
For China local customer requirement Generation Y, the new duplication production tool (11-0571422) in TE Suzhou plant for production to support only Asia-Pacific market. For this new duplication production tool , it will shorten the L/T of delivery time and offer good service for Asia-Pacific market. EMEA customer do not need to change part, only keep original EMEA part. The identification of Suzhou production part is that there are die - identification marked as below （See the attachment）.
Other attachments:
[Explanation for a new duplication production tool 11-0571422 for Generation Y](#)

Reason for Changes:
Customer Request.Dear Customer, we hereby inform you about a transfer of tools and/or processes. The transfer follows a strict procedure, which fully maintains quality, ability to supply and form-fit-function of the concerned products. The new manufacturing location operates under a certified quality management system in accordance with standard automotive requirements. A TE-internal release test based on the relevant part specifications will be executed before delivery. Upon request, a PPAP Level 2 will be available if it concerns a transfer of a tool which produces a finished TE-product. A PPAP Level 1 will be available if it concerns a component of a TE-product, where the production location of the finished TE-product remains unchanged. If you require such a PPAP, please notify the responsible TE Sales Contact within 14 calendar days after receipt of this PCN.

Estimated Dates:

Last Order Date (Obsolete Parts Only):	First Date To Ship (Changed Parts Only):
	31-JUL-2023
Last Ship Date (Obsolete Parts Only):	Last Date for Mixed Shipments: (Changed Parts Only):
	No Mixed Shipments

Part Number(s) being Modified:

Part Number	Part Discontinued per PCN	Customer Drawing	Customer Part Number	Alias Part Number(s)	Substitute Part Number	Substitute Alias Part Number(s)	Description Of Difference
2035170-2	NO						
2098165-1	NO						

Part Number(s) being Modified:

Part Number	Part Discontinued per PCN	Customer Drawing	Customer Part Number	Alias Part Number(s)	Substitute Part Number	Substitute Alias Part Number(s)	Description Of Difference
2035170-2	NO						
2098165-1	NO						

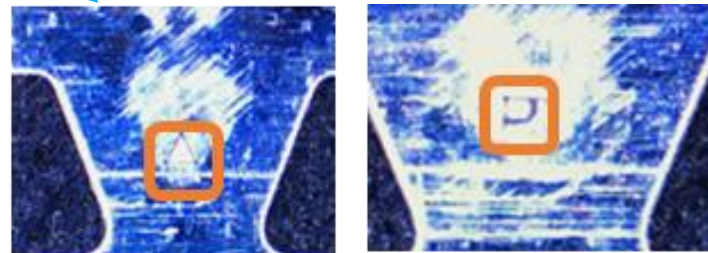
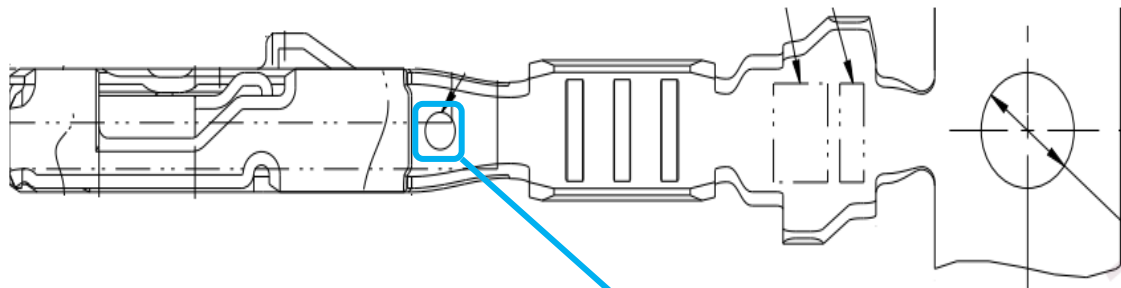
Part Number(s) being Modified:

Part Number	Part Discontinued per PCN	Customer Drawing	Customer Part Number	Alias Part Number(s)	Substitute Part Number	Substitute Alias Part Number(s)	Description Of Difference
2035170-2	NO						
2098165-1	NO						

Explanation for a new duplication production tool 11-0571422 for Generation Y

(P/N: 1-2035170-1, 1-2035170-4, 2035170-1, 2035170-2, 2035170-4, 1-2138699-1, 1-2138699-2, 1-2138699-4, 2098165-1)

1. For China local customer requirement Generation Y, the new duplication production tool (11-0571422) in TE Suzhou plant for production to support only Asia-Pacific market. For this new duplication production tool, it will shorten the L/T of delivery time and offer good service for Asia-Pacific market. EMEA customer do not need to change part, only keep original EMEA part.
2. The identification of Suzhou production part is that there are die - identification marked as below.



New die: 11-0571422,
Die Indicator:

Die Number	Die Indicator - FRONT	Die Indicator - BACK
11-571422	TRIANGLE + N	SQUARE + N

Explanation for a duplication production tool (11-0571422 for Generation Y, Manufacturing location change. Following Part Numbers will be transferred from TE Germany plant < P/N: 1-2035170-1, 1-2035170-4, 2035170-1, 2035170-2, 2035170-4, 1-2138699-1, 1-2138699-2, 1-2138699-4, 2098165-1> to TE Suzhou plant.

Dear Customer, we hereby inform you about a transfer of tools and/or processes. The transfer follows a strict procedure, which fully maintains quality, ability to supply and form-fit-function of the concerned products. The new manufacturing location operates under a certified quality management system in accordance with standard automotive requirements. A TE-internal release test based on the relevant part specifications will be executed before delivery. Upon request, a PPAP Level 2 will be available if it concerns a transfer of a tool which produces a finished TE-product. A PPAP Level 1 will be available if it concerns a component of a TE-product, where the production location of the finished TE-product remains unchanged. If you require such a PPAP, please notify the responsible TE Sales Contact within 14 calendar days after receipt of this PCN