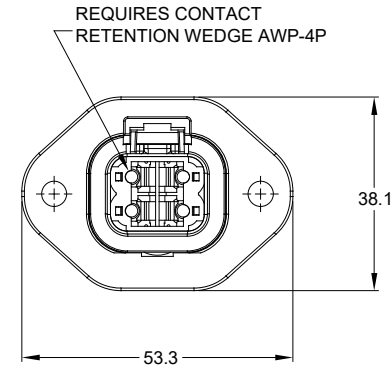
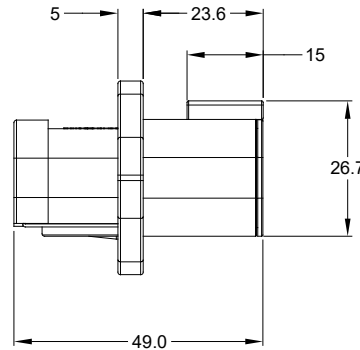
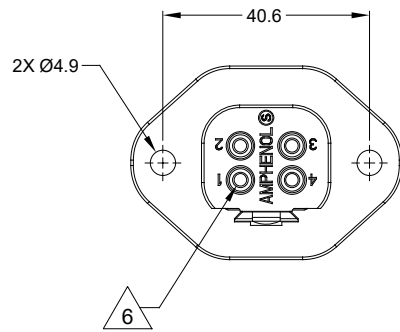


| REVISIONS |     |                               |           |       |       |
|-----------|-----|-------------------------------|-----------|-------|-------|
| REV       | ECO | DESCRIPTION                   | DATE      | BY    | APPR  |
| A3        | --  | RELEASE NEW DWG FORMAT        | 24/NOV/15 | ORION | --    |
| A4        | --  | ADD CARTRIDGE-HOLDER REQUIRED | 04/SEP/19 | JOE   | TOMMY |



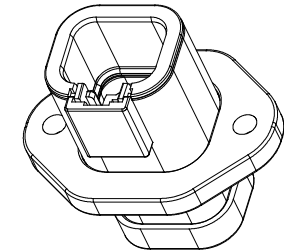
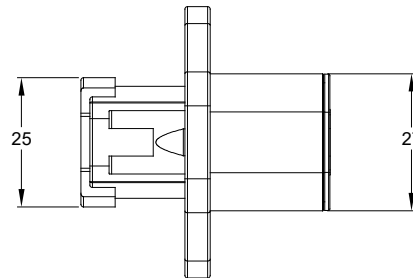
NOTES: UNLESS OTHERWISE SPECIFIED

- MATERIAL:  
HOUSING: THERMOPLASTIC; COLOR: GREY  
FLANGE: THERMOPLASTIC; COLOR: GREY  
SEAL: SILICONE RUBBER
- MODIFICATIONS: END CAP; FLANGE
- SPECIFICATIONS:
  - CURRENT RATING: 25 AMPS
  - OPERATING TEMPERATURE: -55°C TO +125°C
  - DIELECTRIC WITHSTANDING VOLTAGE: LESS THAN 2 MILLIAMPS CURRENT LEAKAGE @ 1500 VOLTS AC.
  - INSULATION RESISTANCE: 1000 MEGOHMS MIN @ 25°C.
  - MOISTURE RESISTANCE: IP67 ( MATED CONDITION )
  - MATING CYCLE DURABILITY: 100 CYCLES
  - RoHS COMPLIANT

- MATING PART: ATP06-4S\* PLUG.  
(\* = MODIFICATIONS AND COLORS )
- ALL DIMENSIONS ARE FOR REFERENCE USE ONLY.

6 CONTACT SIZE AND REAR SEAL WIRE RANGE:

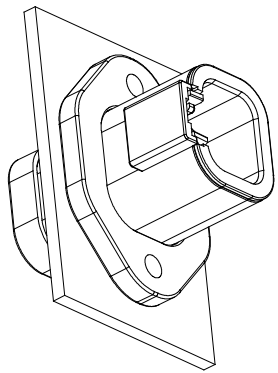
| CONTACT SIZE | MIN. INSUL O.D.   | MAX. INSUL O.D.   | TYPICAL WIRE RANGE |
|--------------|-------------------|-------------------|--------------------|
| 12           | 3.40 mm (.134 in) | 4.95 mm (.195 in) | 10 - 14 AWG        |



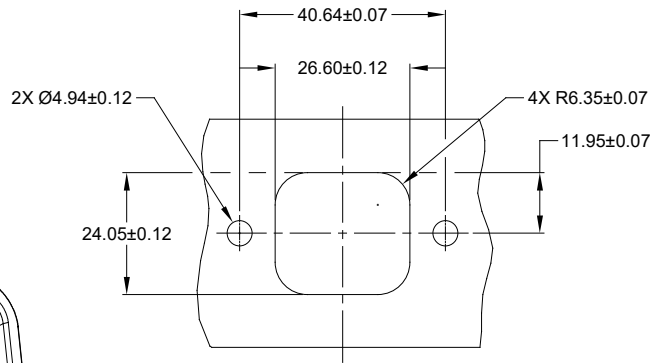
| ATP04-4P-PM02                                      |  | DTP04-4PLE07   |  |                       |  |   |
|--|--|--|--|-----------------------|--|---|
| PART NUMBER  |  | DESCRIPTION  |  |                       |  | ITEM  |
| QUANTITY   |  | MATERIALS LIST   |  |                       |  |   |
| UNLESS OTHERWISE SPECIFIED                         |  | SIGNATURES   |  | DATE                  |  | <p>Sine Systems - www.amphenol-sine.com<br/>44724 Morley Drive<br/>Clinton Township, MI 48036</p> <p>RECEPTACLE, 4 PIN, END CAP<br/>ATP SERIES, PANELMATE</p> |
| 1) All dimensions are in metric(mm).               |  | DRAWN: JOE SONG  |  | 30/AUG/19             |  |   |
| 2) Tolerances are as follows:                      |  | CHECKED: ORION LI  |  | 30/AUG/19             |  |   |
| 1 PL DEC ±0.30<br>2 PL DEC ±0.15<br>3 PL DEC ±0.08 |  | ENGINEER:  |  |                       |  |   |
| 3) Note reference =                                |  | APPROVAL: TOMMY XIE  |  | 30/AUG/19             |  |   |
| MATERIAL SPECIFICATIONS:                           |  | CUSTOMER:  |  |                       |  |   |
| PROCESS SPECIFICATIONS:                            |  | THIS DRAWING IS SUPPLIED FOR INFORMATION ONLY. DESIGN FEATURES, SPECIFICATIONS AND PERFORMANCE DATA SHOWN HEREON ARE THE PROPERTY OF THE AMPHENOL CORPORATION. NO RIGHTS OF REPRODUCTION ARE IMPLIED. ALL DIMENSIONS ARE SUBJECT TO NORMAL MANUFACTURING VARIATIONS. |  |                       |  |   |
| NEXT ASSY:   |  | SIZE: <b>B C-</b>  |  | DWG NO: ATP04-4P-PM02 |  | REVISION: <b>A4</b>   |
|  |  | SCALE: NONE  |  | SHEET 1 OF 2          |  |   |

TITLE: RECEPTACLE, 4 PIN, END CAP, ATP SERIES, PANELMATE  
DWG NO: ATP04-4P-PM02  
REV A4  
SH: 1  
OF: 2

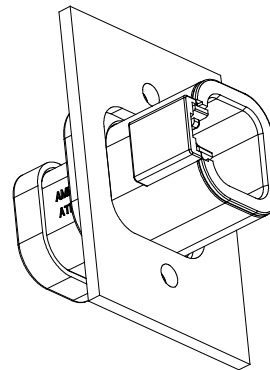
| REVISIONS |     |                               |           |       |       |
|-----------|-----|-------------------------------|-----------|-------|-------|
| REV       | ECO | DESCRIPTION                   | DATE      | BY    | APPR  |
| A3        | --  | RELEASE NEW DWG FORMAT        | 24/NOV/15 | ORION | --    |
| A4        | --  | ADD CARTRIDGE-HOLDER REQUIRED | 04/SEP/19 | JOE   | TOMMY |



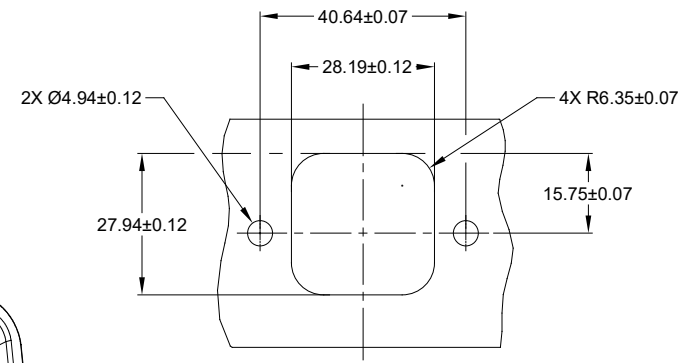
FRONT MOUNT  
REFERENCE VIEW



RECOMMENDED CUTOUT  
FRONT MOUNT



REAR MOUNT  
REFERENCE VIEW



RECOMMENDED CUTOUT  
REAR MOUNT


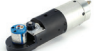


TITLE: RECEPTACLE, 4 PIN, END CAP, ATP SERIES, PANELMATE  
DWG NO.: ATP04-4P-PM02  
REV: A4  
SH: 2  
OF: 2




| ATP04-4P-PM02  |  |             |   |              |          |                |  |  |  |   |            |      |   |  |                 |           |                   |           |           |  |                          |                     |           |           |  |                         |  |  |  |  |            |             |  |              |          |
|--|--|-------------|---|--------------|----------|----------------|--|--|--|---|------------|------|---|--|-----------------|-----------|-------------------|-----------|-----------|--|--------------------------|---------------------|-----------|-----------|--|-------------------------|--|--|--|--|------------|-------------|--|--------------|----------|
| PART NUMBER  |  | DESCRIPTION |   | ITEM         |          |                |  |  |  |   |            |      |   |  |                 |           |                   |           |           |  |                          |                     |           |           |  |                         |  |  |  |  |            |             |  |              |          |
| <table border="1"> <thead> <tr> <th>QUANTITY</th> <th colspan="4">MATERIALS LIST</th> </tr> </thead> <tbody> <tr> <td rowspan="4">           UNLESS OTHERWISE SPECIFIED<br/>           1) All dimensions are in metric(mm).<br/>           2) Tolerances are as follows:<br/>           1 PL DEC ±0.30   Fractions ±1/64<br/>           2 PL DEC ±0.15   Angles ±1°<br/>           3 PL DEC ±0.08<br/>           3) Note reference =  </td> <td>SIGNATURES</td> <td>DATE</td> <td colspan="2" rowspan="4"> <div style="text-align: center;"> <h1>Amphenol</h1> <p>Sine Systems - www.amphenol-sine.com<br/>           44724 Morley Drive<br/>           Clinton Township, MI 48036</p> <p>RECEPTACLE, 4 PIN, END CAP<br/>           ATP SERIES, PANELMATE</p> </div> </td> </tr> <tr> <td>DRAWN: JOE SONG</td> <td>04/SEP/19</td> </tr> <tr> <td>CHECKED: ORION LI</td> <td>04/SEP/19</td> </tr> <tr> <td>ENGINEER:</td> <td></td> </tr> <tr> <td>MATERIAL SPECIFICATIONS:</td> <td>APPROVAL: TOMMY XIE</td> <td>04/SEP/19</td> <td>CUSTOMER:</td> <td></td> </tr> <tr> <td>PROCESS SPECIFICATIONS:</td> <td colspan="4">           THIS DRAWING IS SUPPLIED FOR INFORMATION ONLY. DESIGN FEATURES, SPECIFICATIONS AND PERFORMANCE DATA SHOWN HEREON ARE THE PROPERTY OF THE AMPHENOL CORPORATION. NO RIGHTS OF REPRODUCTION ARE IMPLIED. ALL DIMENSIONS ARE SUBJECT TO NORMAL MANUFACTURING VARIATIONS.         </td> </tr> <tr> <td>NEXT ASSY:</td> <td colspan="2">SCALE: NONE</td> <td>SHEET 2 OF 2</td> <td>REVISION</td> </tr> </tbody> </table> |  |             |   |              | QUANTITY | MATERIALS LIST |  |  |  | UNLESS OTHERWISE SPECIFIED<br>1) All dimensions are in metric(mm).<br>2) Tolerances are as follows:<br>1 PL DEC ±0.30   Fractions ±1/64<br>2 PL DEC ±0.15   Angles ±1°<br>3 PL DEC ±0.08<br>3) Note reference = | SIGNATURES | DATE | <div style="text-align: center;"> <h1>Amphenol</h1> <p>Sine Systems - www.amphenol-sine.com<br/>           44724 Morley Drive<br/>           Clinton Township, MI 48036</p> <p>RECEPTACLE, 4 PIN, END CAP<br/>           ATP SERIES, PANELMATE</p> </div> |  | DRAWN: JOE SONG | 04/SEP/19 | CHECKED: ORION LI | 04/SEP/19 | ENGINEER: |  | MATERIAL SPECIFICATIONS: | APPROVAL: TOMMY XIE | 04/SEP/19 | CUSTOMER: |  | PROCESS SPECIFICATIONS: | THIS DRAWING IS SUPPLIED FOR INFORMATION ONLY. DESIGN FEATURES, SPECIFICATIONS AND PERFORMANCE DATA SHOWN HEREON ARE THE PROPERTY OF THE AMPHENOL CORPORATION. NO RIGHTS OF REPRODUCTION ARE IMPLIED. ALL DIMENSIONS ARE SUBJECT TO NORMAL MANUFACTURING VARIATIONS. |  |  |  | NEXT ASSY: | SCALE: NONE |  | SHEET 2 OF 2 | REVISION |
| QUANTITY   | MATERIALS LIST   |             |   |              |          |                |  |  |  |   |            |      |   |  |                 |           |                   |           |           |  |                          |                     |           |           |  |                         |  |  |  |  |            |             |  |              |          |
| UNLESS OTHERWISE SPECIFIED<br>1) All dimensions are in metric(mm).<br>2) Tolerances are as follows:<br>1 PL DEC ±0.30   Fractions ±1/64<br>2 PL DEC ±0.15   Angles ±1°<br>3 PL DEC ±0.08<br>3) Note reference =  | SIGNATURES   | DATE        | <div style="text-align: center;"> <h1>Amphenol</h1> <p>Sine Systems - www.amphenol-sine.com<br/>           44724 Morley Drive<br/>           Clinton Township, MI 48036</p> <p>RECEPTACLE, 4 PIN, END CAP<br/>           ATP SERIES, PANELMATE</p> </div> |              |          |                |  |  |  |   |            |      |   |  |                 |           |                   |           |           |  |                          |                     |           |           |  |                         |  |  |  |  |            |             |  |              |          |
|  | DRAWN: JOE SONG  | 04/SEP/19   |   |              |          |                |  |  |  |   |            |      |   |  |                 |           |                   |           |           |  |                          |                     |           |           |  |                         |  |  |  |  |            |             |  |              |          |
|  | CHECKED: ORION LI  | 04/SEP/19   |   |              |          |                |  |  |  |   |            |      |   |  |                 |           |                   |           |           |  |                          |                     |           |           |  |                         |  |  |  |  |            |             |  |              |          |
|  | ENGINEER:  |             |   |              |          |                |  |  |  |   |            |      |   |  |                 |           |                   |           |           |  |                          |                     |           |           |  |                         |  |  |  |  |            |             |  |              |          |
| MATERIAL SPECIFICATIONS:   | APPROVAL: TOMMY XIE  | 04/SEP/19   | CUSTOMER:   |              |          |                |  |  |  |   |            |      |   |  |                 |           |                   |           |           |  |                          |                     |           |           |  |                         |  |  |  |  |            |             |  |              |          |
| PROCESS SPECIFICATIONS:  | THIS DRAWING IS SUPPLIED FOR INFORMATION ONLY. DESIGN FEATURES, SPECIFICATIONS AND PERFORMANCE DATA SHOWN HEREON ARE THE PROPERTY OF THE AMPHENOL CORPORATION. NO RIGHTS OF REPRODUCTION ARE IMPLIED. ALL DIMENSIONS ARE SUBJECT TO NORMAL MANUFACTURING VARIATIONS. |             |   |              |          |                |  |  |  |   |            |      |   |  |                 |           |                   |           |           |  |                          |                     |           |           |  |                         |  |  |  |  |            |             |  |              |          |
| NEXT ASSY:   | SCALE: NONE  |             | SHEET 2 OF 2  | REVISION     |          |                |  |  |  |   |            |      |   |  |                 |           |                   |           |           |  |                          |                     |           |           |  |                         |  |  |  |  |            |             |  |              |          |
| SIZE: B  |  | TYPE: C-    | DWG NO.: ATP04-4P-PM02  | REVISION: A4 |          |                |  |  |  |   |            |      |   |  |                 |           |                   |           |           |  |                          |                     |           |           |  |                         |  |  |  |  |            |             |  |              |          |

# ATP Series™ - Contact Size 12 Options



| Machined Contacts, Sockets & Pins |  |      |       |          |
|-----------------------------------|--|------|-------|----------|
| Part Number                       | Description                            | Size | AWG   | Type     |
| AT60-204-12141-10                 | Male Contact - Pin, Nickel-plated      | 12   | 10-12 | Machined |
| AT62-203-12141-10                 | Female Contact - Socket, Nickel-plated | 12   | 10-12 | Machined |
| AT60-220-1231                     | Male Contact - Pin, Gold-plated        | 12   | 12-14 | Machined |
| AT62-210-1231                     | Female Contact - Socket, Gold-plated   | 12   | 12-14 | Machined |
| AT60-204-12141                    | Male Contact - Pin, Nickel-plated      | 12   | 12-14 | Machined |
| AT62-203-12141                    | Female Contact - Socket, Nickel-plated | 12   | 12-14 | Machined |

| DiagnosticGrade™ Machined Contacts, Sockets & Pins   |  |      |     |          |
|--|--|------|-----|----------|
| • Smaller AWG for Diagnostic Applications • Gold-plated • Increased Mating Cycles • Cost-effective |  |      |     |          |
| Part Number  | Description  | Size | AWG | Type     |
| 65-54749   | Male Contact - DiagnosticGrade™, Pin, Gold-plated      | 12   | 20  | Machined |
| AT62-210-1231-1820   | Female Contact - DiagnosticGrade™, Socket, Gold-plated | 12   | 20  | Machined |

| Tooling - Machined Contacts  |             |   |
|--|-------------|---|
| Part   | Part Number | Description   |
|   | CA-5D12     | Universal Hand Crimp Tool, Size 12/16/20 (Machined contacts only)                           |
|   | CA-5E12     | Pneumatic Crimp Tool, Size 12/16/20 (Machined contacts only)                                |
|   | M300-25A    | Hand Crimp Tool used with Crimp Locator MFX-3966, Size 12, 10AWG (Machined contacts only)   |
|  | MFX-3966    | Contact Locator used with Hand Crimp Tool M300-25A, Size 12, 10AWG (Machined contacts only) |

| Contact Removal Tools   |               |   |
|---|---------------|---|
| Part  | Part Number   | Description   |
|  | ATRT-100      | Used for removal of contacts for A Series™ products |
|  | AT11-337-1205 | Contact Removal Tool, Plastic, Size 12              |
|  | A114017       | Sealing Plug, Size 12, White                        |

| Stamped & Formed Contacts, Sockets & Pins |  |      |       |                  |
|---|--|------|-------|------------------|
| Part Number                               | Description                            | Size | AWG   | Type             |
| AT60-12-0244                              | Male Contact - Pin, Gold-plated        | 12   | 10-12 | Stamped & Formed |
| AT62-12-0244                              | Female Contact - Socket, Gold-plated   | 12   | 10-12 | Stamped & Formed |
| AT60-12-0222                              | Male Contact - Pin, Nickel-plated      | 12   | 10-12 | Stamped & Formed |
| AT62-12-0222                              | Female Contact - Socket, Nickel-plated | 12   | 10-12 | Stamped & Formed |
| AT60-12-0144                              | Male Contact - Pin, Gold-plated        | 12   | 12-14 | Stamped & Formed |
| AT62-12-0144                              | Female Contact - Socket, Gold-plated   | 12   | 12-14 | Stamped & Formed |
| AT60-12-0166                              | Male Contact - Pin, Nickel-plated      | 12   | 12-14 | Stamped & Formed |
| AT62-12-0166                              | Female Contact - Socket, Nickel-plated | 12   | 12-14 | Stamped & Formed |

| Tooling - Stamped & Formed Contacts   |             |   |
|---|-------------|---|
| Part  | Part Number | Description   |
|  | MFX-3973    | Crimp Die - Size 12 (S&F contacts only)                       |
|   | MFX-3985    | Crimp Die - Size 12 (S&F contacts only) 10-12AWG -02XX Series |
|  | ATT-12-00   | Hand Crimp Tool - Size 12, 12AWG (S&F contacts only)          |
|   | ATT-12-01   | Hand Crimp Tool - Size 12, 10AWG (S&F contacts only)          |