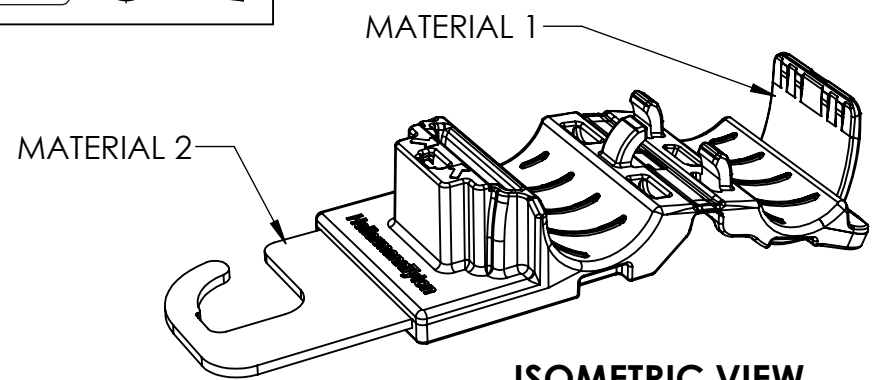
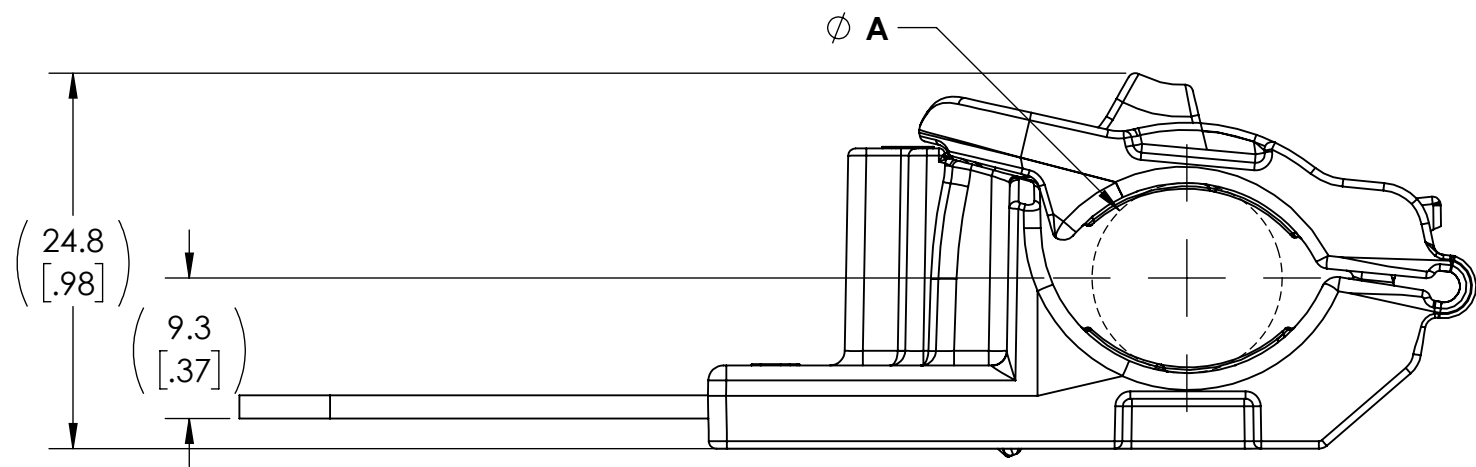
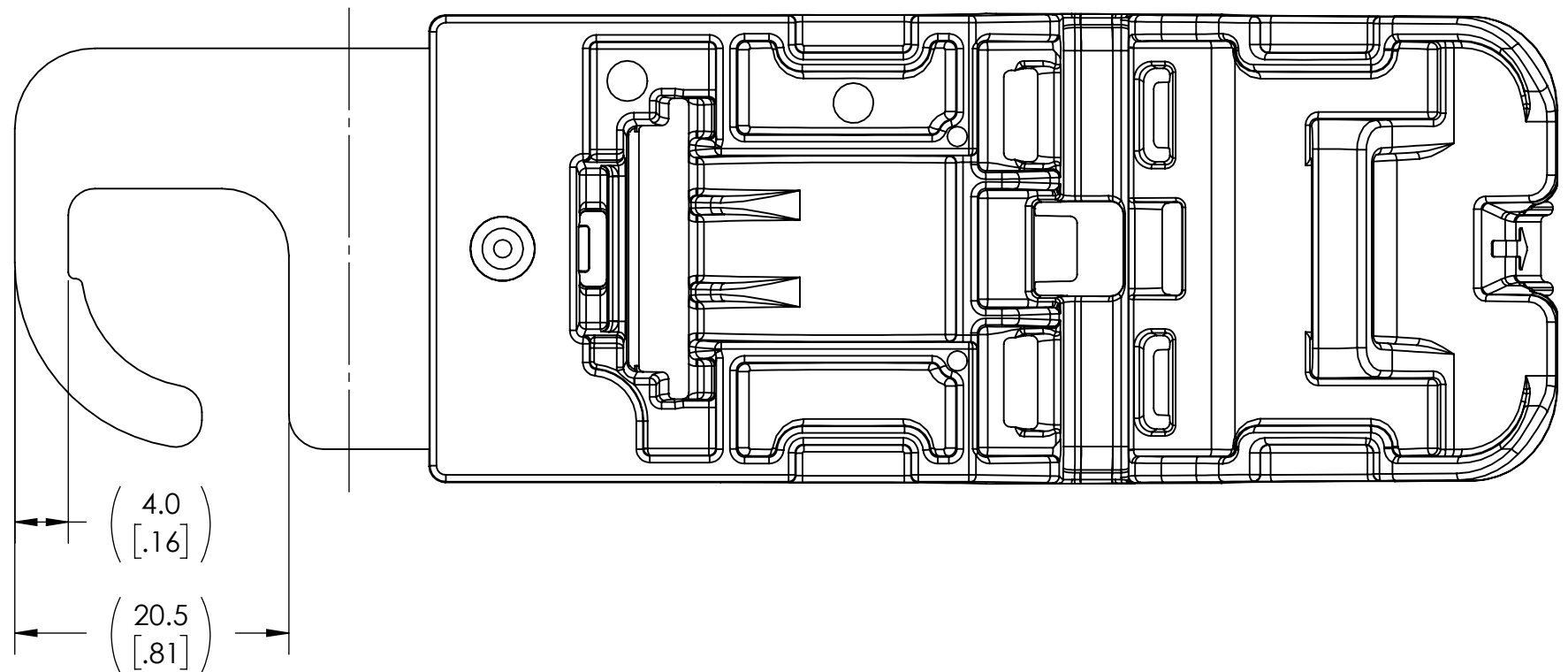
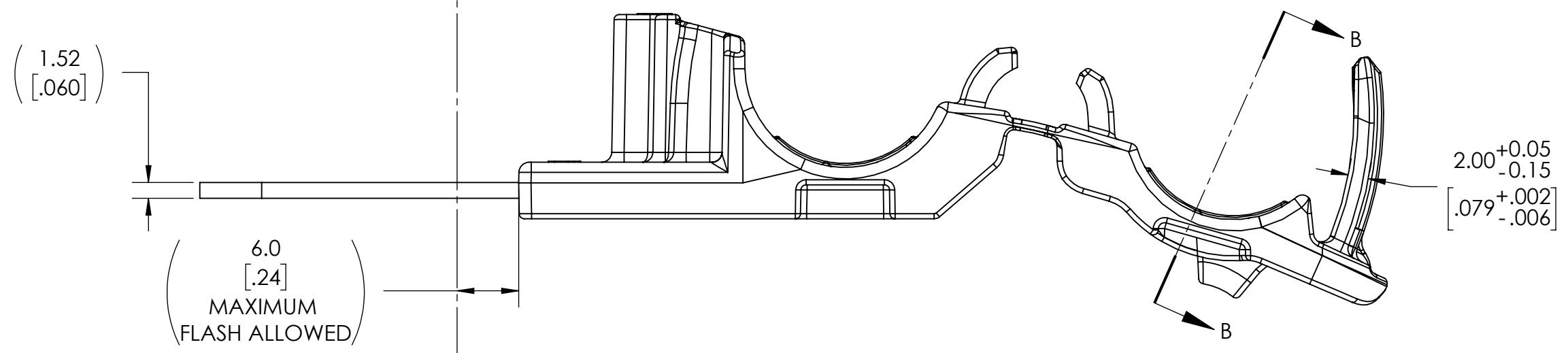
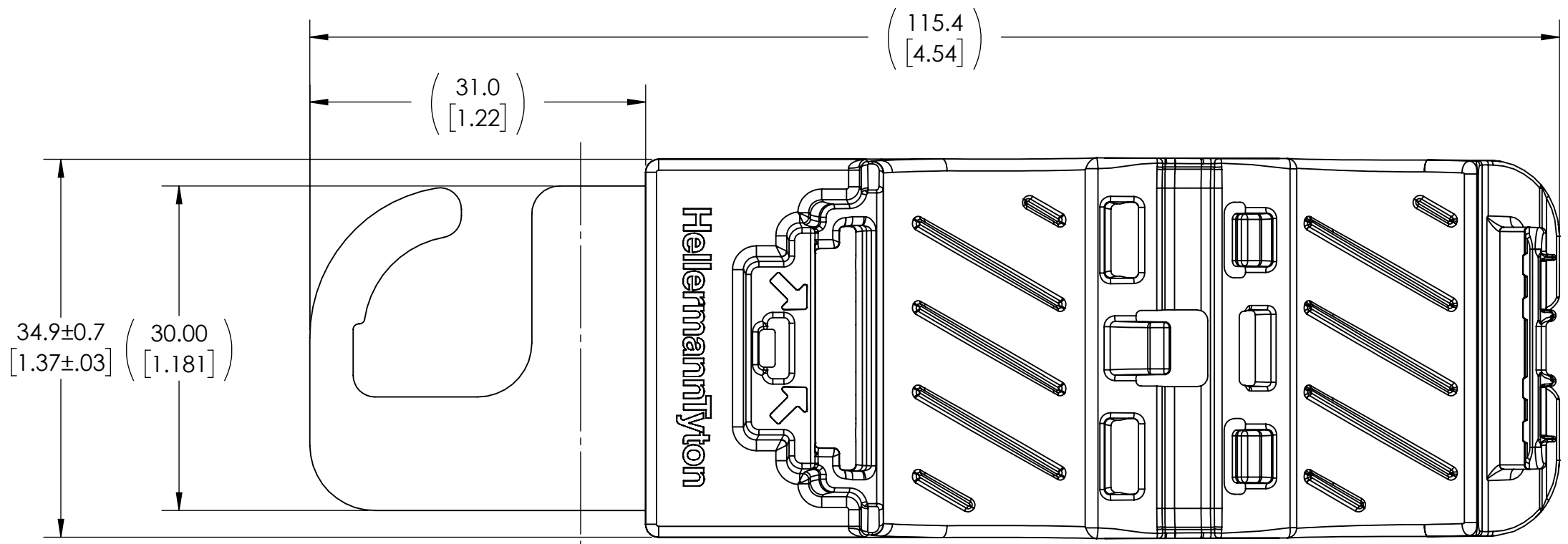


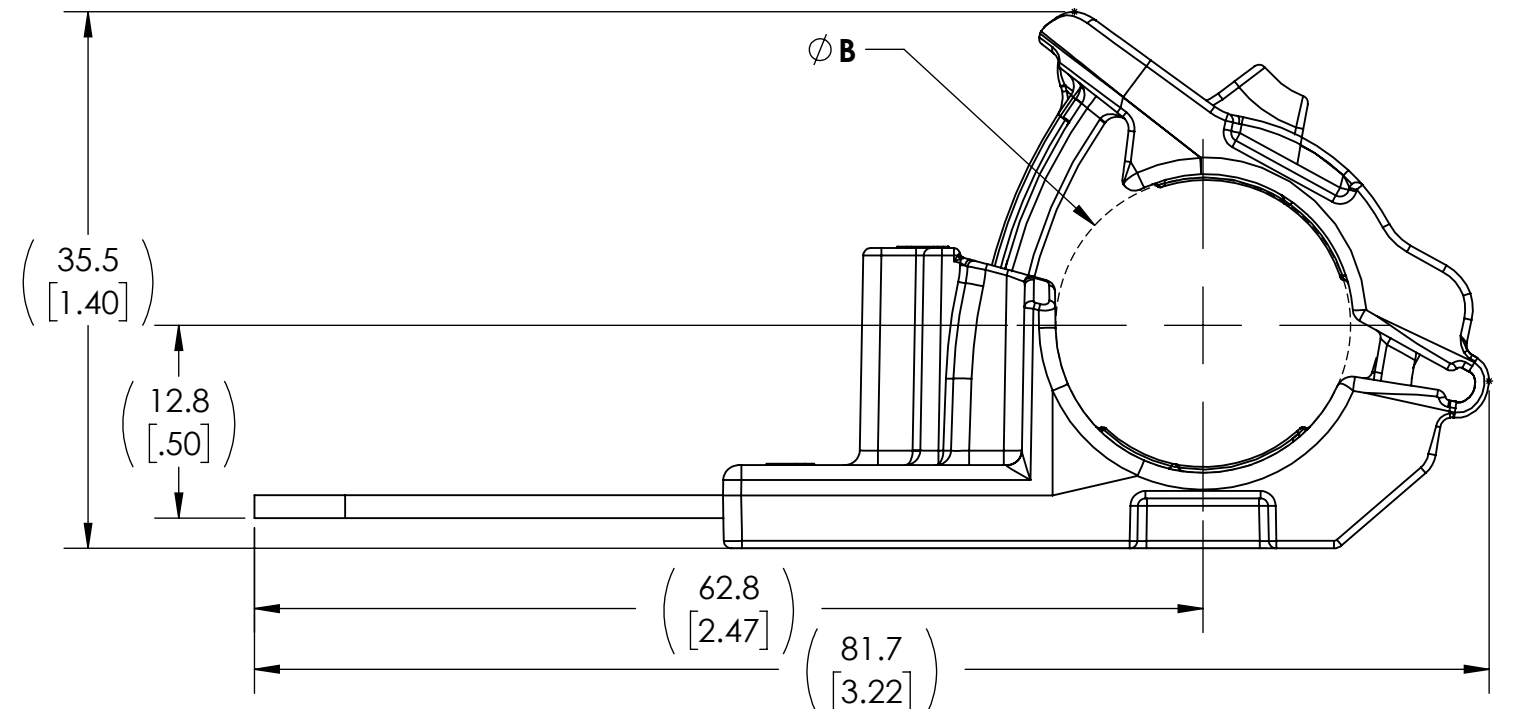
Revision level			Revision Record	Changed	Date	Approved	Date
Drawing	State	Part					
01.1	Design Release	-	SEE ECN# 014778	CTF	12/03/2018	MHT	12/03/2018



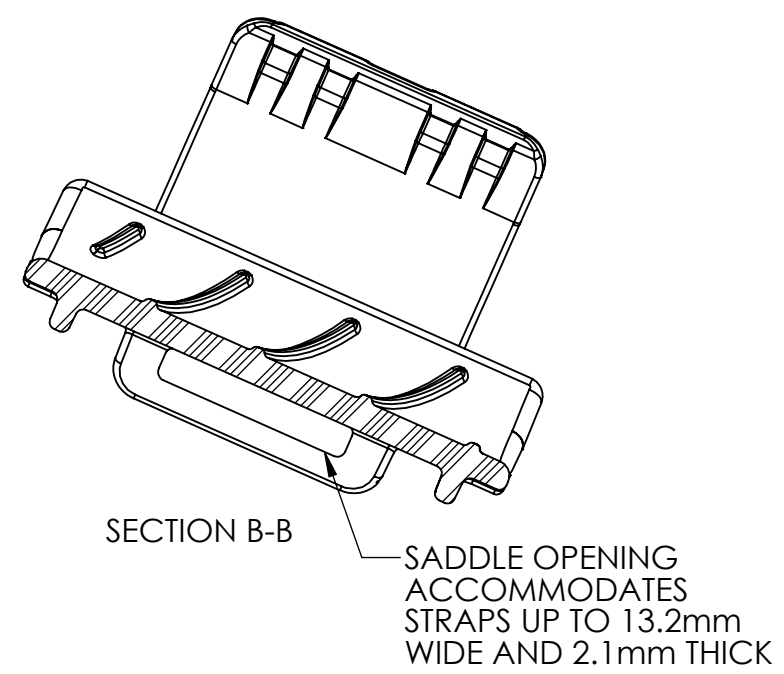
**ISOMETRIC VIEW  
SCALE 1 : 1  
PRODUCT SHIPPED IN CLAMP OPEN POSITION**



**MINIMUM BUNDLE DIAMETER**



**MAXIMUM BUNDLE DIAMETER**




**INITIAL MOLD VALIDATION:**  
DRY AS MOLDED WITH ≤ 0.5% MOISTURE CONTENT:

- ITS-0008 RATCHET CLOSE AND RELEASE TEST: EXCEEDED 445 NEWTONS (100 LBS) MIN AT A NOMINAL BUNDLE DIAMETER OF 15.88 [0.625] AFTER CLOSING AND RELEASING 40 TIMES
- ITS-0014 LOW TEMPERATURE HINGE TEST: NO DAMAGE OCCURED AFTER BENDING LIVING HINGE 40 TIMES AT -40°C

**PERFORMANCE REQUIREMENTS:**  
DRY AS MOLDED WITH ≤ 0.5% MOISTURE CONTENT:

- ITS-0001 RATCHET CLAMP SPLIT MANDREL TEST: 445 NEWTONS (100 LBS) MIN AT A NOMINAL BUNDLE DIAMETER OF 15.88 [0.625]
- MAXIMUM PERCENT REGRIND PERMISSABLE: 25%
- MAXIMUM ALLOWABLE FLASH OR MISMATCH TO BE: 0.25mm

GLOBAL PART DESCRIPTION	BUNDLE TYPES	A	B
		MINIMUM DIAMETER	MAXIMUM DIAMETER
RCBHOOK-PA66HIRHSUV/ZN-ML	SOFT	12.7 [.50]	19.5 [.77]
	HARD	11.9 [.47]	18.7 [.74]

Notes	Material 1. PA66HIRHSUV BLACK 2. ZINC PLATED STEEL	Units: millimeters Dimension without tolerances details to: .xxx = ±.013 .xx = ±.13 .x = ±.3 None = ±.8 < = ±0.5*	The copyright of this drawing is reserved by HellermannTyton. It is issued on condition that it is not reproduced, copied, or disclosed to a third party, either wholly or in part, without the consent of HellermannTyton.	Drawn	MHT	04/13/2015	Article/Type-No	RCBHOOK		Scale	2:1
				Approved	KAC	05/28/2015	Title	RCB RATCHET P CLAMP, SIZE B, CLAMP RANGE 12.7 TO 19.5, HOOK		Project Number	PRP18-2348
				 North America Email: corp@htamericas.com Web: www.hellermann.tyton.com			Drawing-No	PRODUCTION : Phase		Format	C
							18-2348-101-CSU			Sheet	1/1