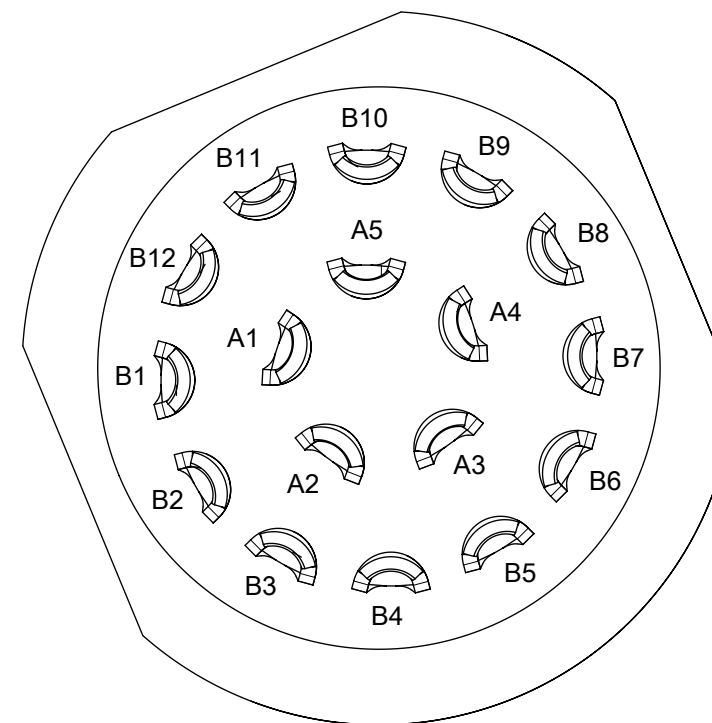
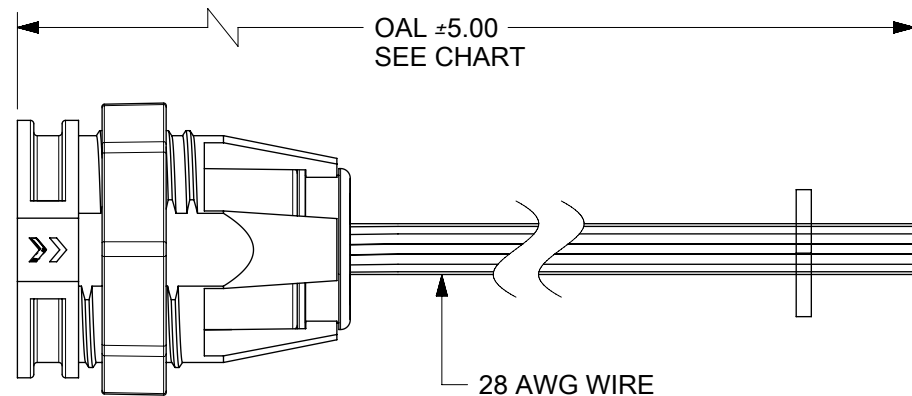
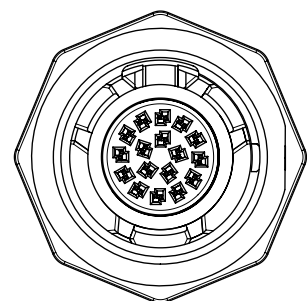


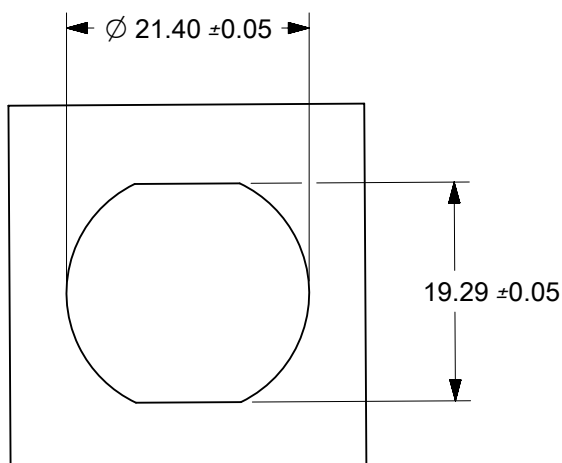
MATERIAL NUMBER	OVERALL LENGTH
172898-0001	150
172898-0002	500

- NOTES:
1. MATERIAL: POLYCARBONATE AND PHOS BRONZE
 2. FINISH: SELECT GOLD OVER NICKEL
 3. PRODUCT SPECIFICATION: 2021100000-PS
 4. PACKAGING SPECIFICATION: 1728970000-PK
 5. MATES WITH MPC D2 MALE HARNESS 172898 OR 172899

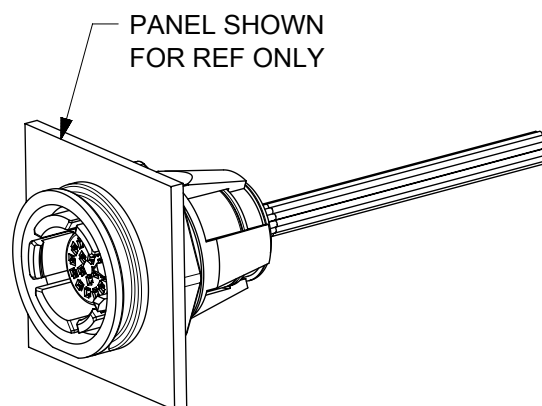


CIRCUIT	WIRE COLOR
A1	RED
A2	GREEN
A3	BROWN
A4	BLUE
A5	YELLOW
B1	VIOLET
B2	WHITE
B3	GREY
B4	BLACK
B5	ORANGE
B6	WHITE/RED
B7	WHITE/GREEN
B8	WHITE/BLUE
B9	WHITE/BROWN
B10	WHITE/VIOLET
B11	WHITE/GREY
B12	WHITE/BLACK

WIRING DIAGRAM
COMPONENTS REMOVED
TO SHOW TERMINALS



RECOMMENDED PANEL CUTOUT
PANEL THICKNESS: 2.0±1.0



SYMBOLS	THIS DRAWING CONTAINS INFORMATION THAT IS PROPRIETARY TO MOLEX ELECTRONIC TECHNOLOGIES, LLC AND SHOULD NOT BE USED WITHOUT WRITTEN PERMISSION		
	DIMENSION UNITS	SCALE	CURRENT REV DESC: RELEASED
▽ = 0	mm	1.5:1	EC NO: 607268 DRWN: KSAMIEC 2018/11/29 CHK'D: FSMITH 2018/12/04 APPR: FSMITH 2018/12/04
▽ = 0	GENERAL TOLERANCES (UNLESS SPECIFIED)		
▽ = 0	ANGULAR TOL ± °		
▽ = 0	4 PLACES	±	INITIAL REVISION: DRWN: KSAMIEC 2018/11/29 APPR: FSMITH 2018/12/04
▽ = 0	3 PLACES	±	
▽ = 0	2 PLACES	±	DOCUMENT NUMBER 1728970000-SD
▽ = 0	1 PLACE	±	
▽ = 0	0 PLACES	±	DOC TYPE PSD
▽ = 0	DRAFT WHERE APPLICABLE MUST REMAIN WITHIN DIMENSIONS	THIRD ANGLE PROJECTION	SHEET NUMBER 1 OF 1
▽ = 0		DRAWING B-SIZE	SERIES 172897
		MATERIAL NUMBER SEE CHART	CUSTOMER GENERAL MARKET

molex

MPC D2 FEMALE PANEL MOUNT HARNESS

PRODUCT CUSTOMER DRAWING