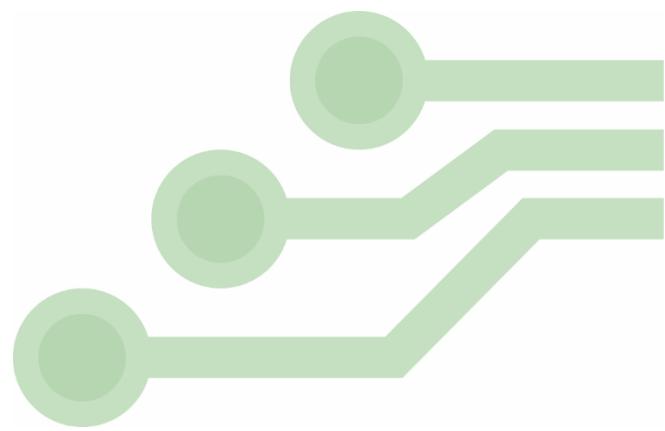


2661 Galvin Court
Elgin, IL 60124, USA
847.844.8795
nhtech@newhavendisplay.com



December 12, 2018

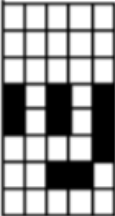
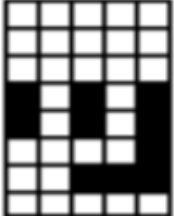
Engineering Change Notification

To: All Relevant Customers
From: Newhaven Display Quality Dept.

This notice is to inform you of a change to the following product(s):

M0220MD-202MDAR1-1
M0220MD-202MDAR1-3

The display will now illuminate an additional pixel when showing the Japanese character with an ASCII value of 10101111 binary / 175 decimal / AF hex. The built-in font table has changed from PT6314-008 ([page 40](#)) to PT6314-001 ([page 37](#)).

Old Design	New Design
	

We understand that every customer's application is unique, and therefore we recommend our customers using this display to request new samples for verification.

Please visit www.newhavendisplay.com or email nhtech@newhavendisplay.com for further information or assistance with this change.

