

DESCRIPTION:
M12 HYBRID RECEPTACLE 4+2 BACK PANEL MOUNT
WITH M16 THREAD AND SPECIAL KEYWAY.

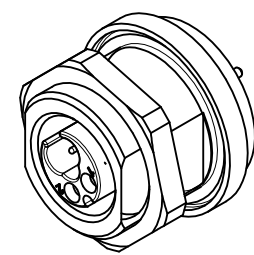
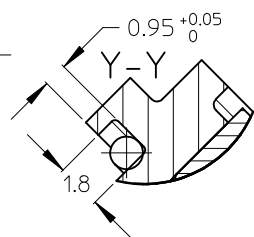
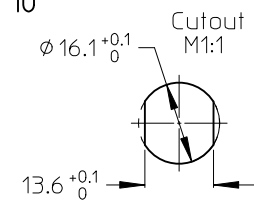
ELECTRICAL DATA:
SIGNAL:
POLES: 4
MAX. VOLTAGE: 30V
MAX. CURRENT: 0.5A at 55°C
CONTACT RESISTANCE: <5 mOhm
INSULATION RESISTANCE: >100 MOhm

POWER:
POLES: 2
MAX. VOLTAGE: 60V
MAX. CURRENT: 12A at 55°C
CONTACT RESISTANCE: <5 mOhm
INSULATION RESISTANCE: >100 MOhm

ENVIRONMENTAL:
DEGREE OF PROTECTION: IP67
TEMPERATURE RANGE: -25°C TO 75°C
SOLDERING TEMPERATURE:
180°C / 20-30 SEC AT PLACEMENT SIDE OF THE PCB.

PACKAGING:
THE RECEPTACLES ARE PACKED INTO BLISTER BOXES 25PCS EACH.
THE BLISTER BOXES ARE PACKED INTO A CARTON BOX 16 BLISTER EACH.

FOR DETAILED PCB PINOUT SEE DRAWING:
SD-120355-001



ITEM	COMPONENT	MATERIAL	FINISH
1	POWER INSERT	PA	BLACK
2	SIGNAL INSERT	PP	BLACK
3	SIGNAL CONTACTS	BRASS	GOLD OVER NICKEL
4	POWER CONTACTS	BRASS	GOLD OVER NICKEL
5	SHIELDING SHELL	BRASS	NICKEL
6	HOUSING	BRASS	NICKEL
7	O-RING 15.7x1.3	EPDM	BLACK
8	O-RING 7.1x1.35	VITON	RED
9	POTTING MATERIAL	EPOXY	NATURE
10	HEXNUT M16X1.5	CuZn39Pb3	Cu/Ni3b

ENTER DESCRIPTION EC NO: WEU2012-0026 DRW:RSILLER 2011/09/22 CHKD:CFORDERER 2011/11/10 APPR:CBURGER 2011/11/30	QUALITY SYMBOLS ▽=0 ◻=0	GENERAL TOLERANCES (UNLESS SPECIFIED)		DIMENSION STYLE MM ONLY		SCALE 5:1	DESIGN UNITS METRIC	THIRD ANGLE PROJECTION	
		mm	INCH	DRAWN BY RSILLER	DATE 2011/09/22	TITLE REC M12 CHT 8P 2C MF M16 BM SHLD CHT 4+2	molex MOLEX INCORPORATED		
1	REV	4 PLACES	± ---	± ---	CHECKED BY CFORDERER	DATE 2011/09/22	DOCUMENT NO. SD-120355-056		
		3 PLACES	± ---	± ---	DATE 2011/11/30	SHEET NO. 1 OF 1			
		2 PLACES	± 0.05	± ---	APPROVED BY CBURGER				MATERIAL NO. 1203550056
		1 PLACE	± 0.1	± ---	DATE 2011/11/30		THIS DRAWING CONTAINS INFORMATION THAT IS PROPRIETARY TO MOLEX INCORPORATED AND SHOULD NOT BE USED WITHOUT WRITTEN PERMISSION		
		ANGULAR ± ---°		DRAFT WHERE APPLICABLE MUST REMAIN WITHIN DIMENSIONS					