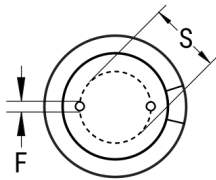


SIDE VIEW



TERMINAL END VIEW



Click [here](#) for the 3D model.

Dimensions	
D	16mm +/-0.5mm
L	36mm +2.0mm
S	7.5mm +/-0.5mm
LL Negative	15mm MIN
LL Positive	20mm MIN
F	0.8mm NOM

Packaging Specifications	
Packaging	Bulk, Bag
Packaging Quantity	600

General Information	
Series	ESZ
Dielectric	Aluminum Electrolytic
Description	Single Ended Aluminum Electrolytic
RoHS	Yes
Lead	Wire Leads
AEC-Q200	No

Specifications	
Capacitance	47 uF
Capacitance Tolerance	20%
Voltage DC	450 VDC, 500 VDC (Surge)
Temperature Range	-25/+105°C
Rated Temperature	105°C
Life	10000 Hrs
Dissipation Factor	24%
Ripple Current	440 mAmps (120Hz 105C), 880 mAmps (100kHz 105C)
Leakage Current	946 uA (2min 20°C)
Impedance Ratio at -25C	6