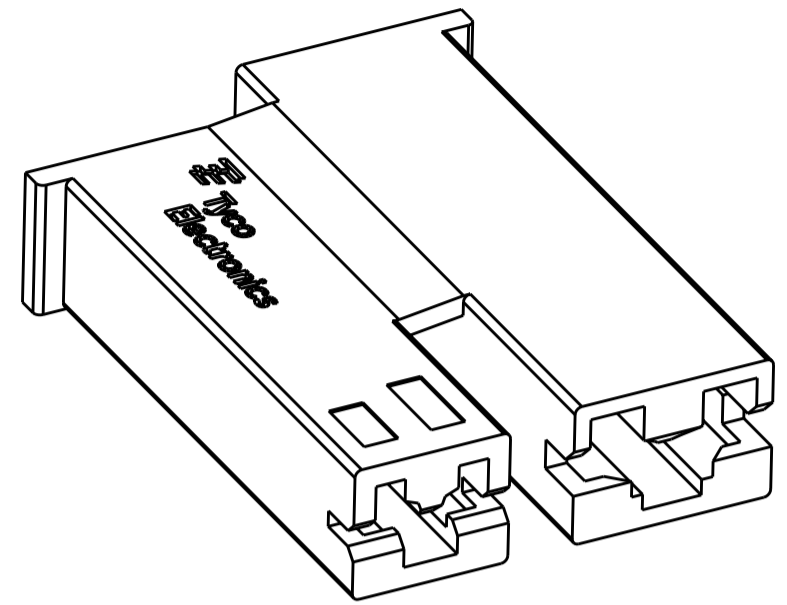
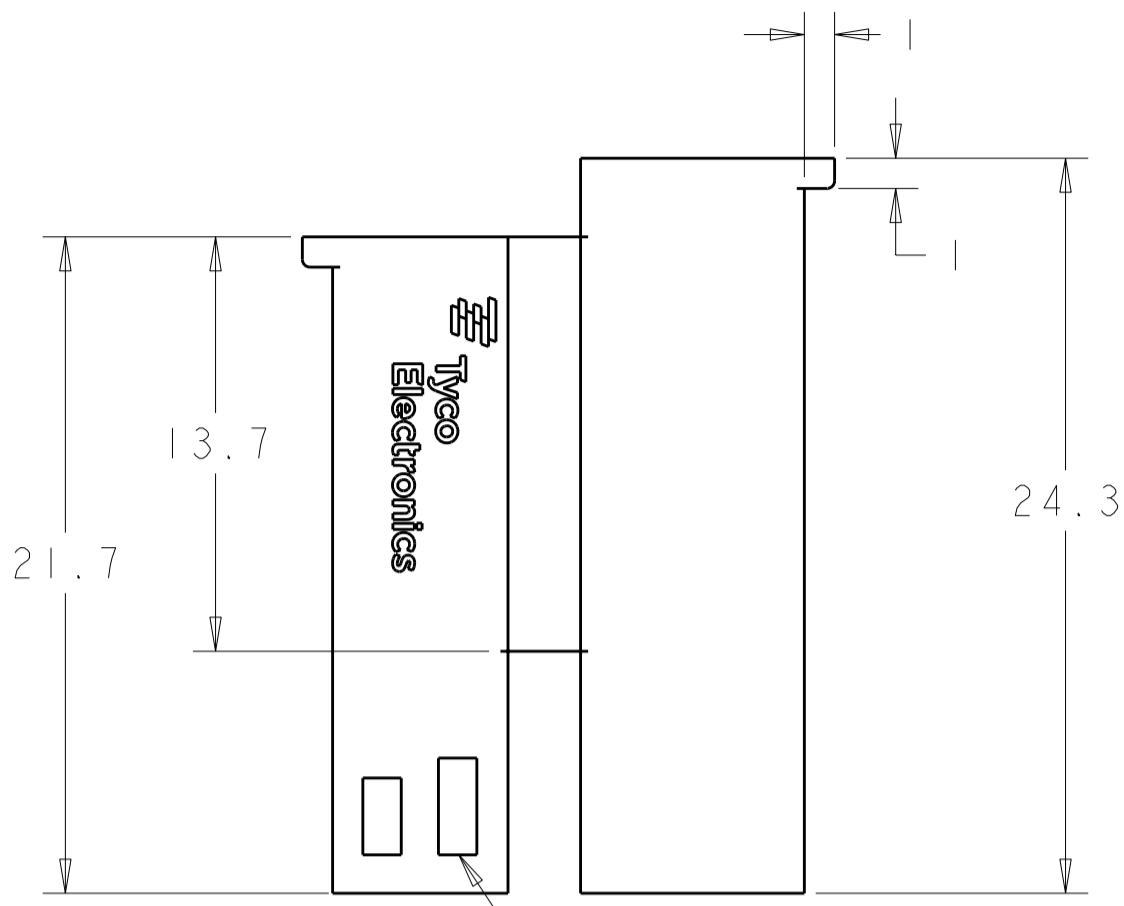
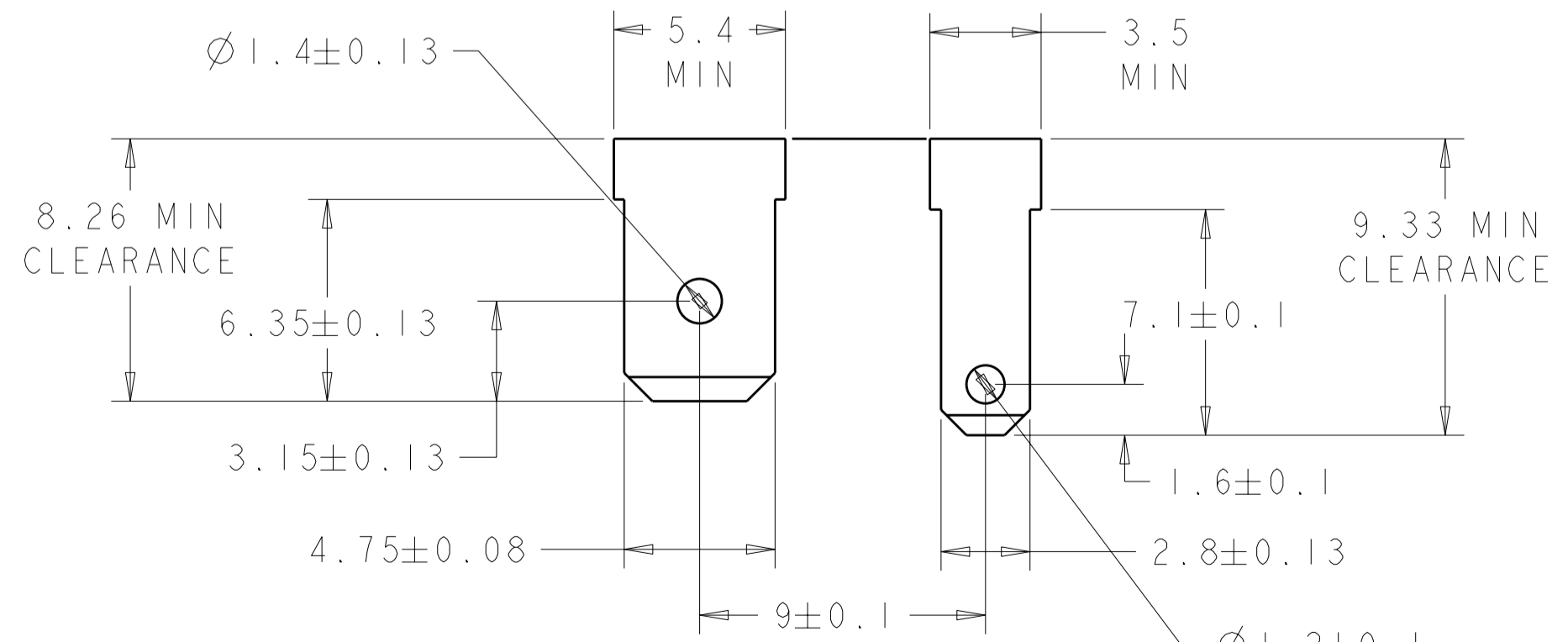
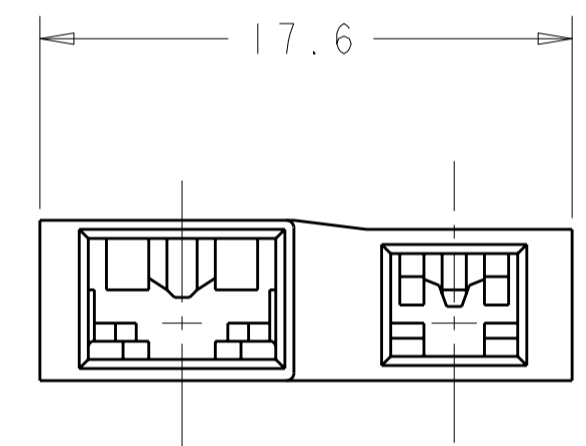
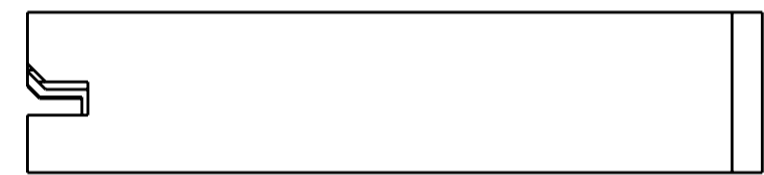
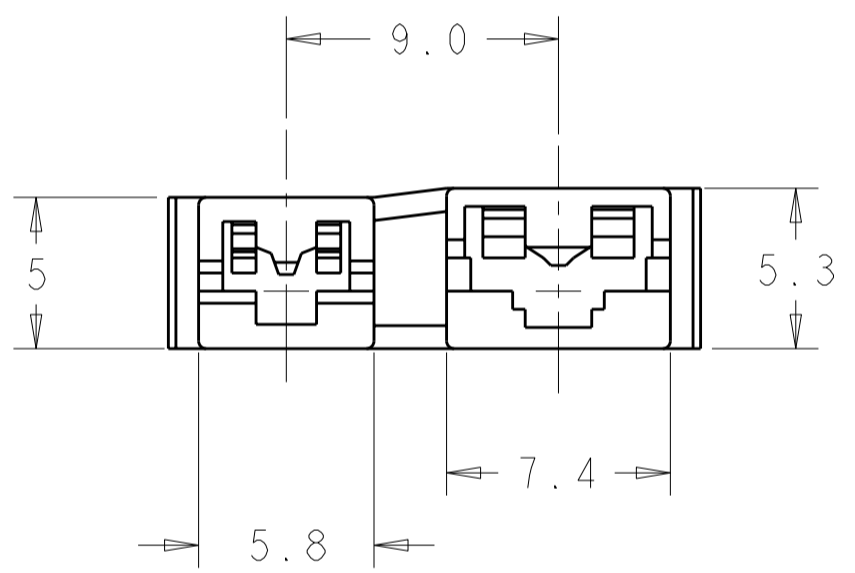


THIS DRAWING IS UNPUBLISHED. RELEASED FOR PUBLICATION 20
 © COPYRIGHT 20 BY TYCO ELECTRONICS CORPORATION. ALL RIGHTS RESERVED.

LOC	DIST	REVISIONS			
P	LTR	DESCRIPTION	DATE	DWN	APVD
AF	50	C4	REVISED PER ECR-08-021778	10OCT08	JR EH



1 RECOMMENDED RECEPTACLE CONTACTS ARE .110 SERIES P/N 175411-5 AND .187 MKII SERIES P/N 63196-4
 2 PREPRODUCTION - FASR REQUIRED



	<PA46>	4/6 NYLON, V2 COLOR-BLACK	1969178-2
OBSOLETE	<PA66>	6/6 NYLON, V2 COLOR-BLACK	2 1969178-1
	DFE SYMBOL	MATERIAL	PART NUMBER

THIS DRAWING IS A CONTROLLED DOCUMENT FOR TYCO ELECTRONICS CORPORATION. IT IS SUBJECT TO CHANGE AND THE CONTROLLING ENGINEERING ORGANIZATION SHOULD BE CONTACTED FOR THE LATEST REVISION.		DWN JR RUTH 21NOV2007	Tyco Electronics Harrisburg, PA 17105-3608	
DIMENSIONS: mm		CHK ED HOWARD 21NOV2007	NAME HOUSING, RECEPTACLE, POSITIVE-LOCK, 110 SERIES AND 187 MKII SERIES	
TOLERANCES UNLESS OTHERWISE SPECIFIED: 0 PLC ±.25 1 PLC ±.25 2 PLC ±.25 3 PLC ±. 4 PLC ±. ANGLES ±. FINISH ±.		APVD ED HOWARD 21NOV2007	PRODUCT SPEC -	
MATERIAL SEE TABLE		APPLICATION SPEC -	SCALE A200779C-1969178	
SEE TABLE		WEIGHT -	RESTRICTED TO C4	
CUSTOMER DRAWING		SCALE 4:1	SHEET 1 OF 1 REV C4	

SCALE 5:1
 SUGGESTED MATING TAB DIMENSIONS